

Converting Colors

`RYB(184, 150, 106)`

Have a look what the booklet for
RYB(184, 150, 106) contains.

RYB(184, 150, 106)	3
<i>Conversions</i>	4
<i>Details</i>	6
<i>Harmonies</i>	11
<i>Previews</i>	23
<i>Color Blindness Simulation</i>	26
<i>CSS Examples</i>	29

Color

R_YB(184, 150, 106)

Conversions

Conversions Part 1

Format	Color
Hex	B8866A
RGB	184, 134, 106
RGB Percent	72%, 53%, 42%
CMY	0.2784, 0.4740, 0.5843
CMYK	0.00, 0.27, 0.42, 0.28
HSL	22°, 35%, 57%
HSV	22°, 42%, 72%
XYZ	30.9119, 28.3174, 17.4722
YIQ	145.7580, 38.7880, 1.8920

Conversions

Conversions Part 2

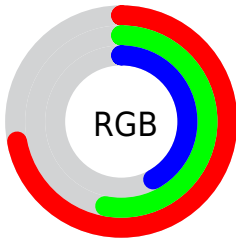
Format	Color
RYB	184, 150, 106
Decimal	12093034
CIELab	60.17, 15.51, 22.65
CIElCh	60, 27.453, 55.602
Yxy	28.3174, 0.4030, 0.3692
Android (android.graphics.Color)	4290283114 (0xFFB8866A)
YUV	145.7580, -19.6007, 33.5382
Hunter-Lab	53.2141, 10.5654, 17.7827

Details

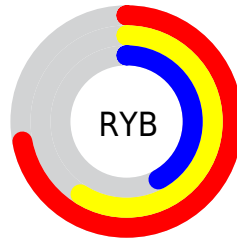
The RYB color **184, 150, 106** is a dark color, and the websafe version is hex **CC9966**. A complement of this color would be **106, 136, 184**, and the grayscale version is **146, 146, 146**.

A 20% lighter version of the original color is **242, 202, 158**, and **129, 99, 58** is the 20% darker color. If you saturate the color by 10%, you get **184, 141, 88**, and if you desaturate by 10%, it is **184, 159, 124**.

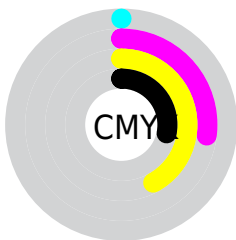
Distribution



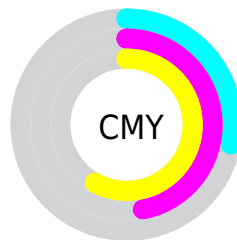
- Red (72%)
- Green (53%)
- Blue (42%)



- Red (72%)
- Yellow (59%)
- Blue (42%)



- Cyan (0%)
- Magenta (27%)
- Yellow (42%)
- Black (28%)



- Cyan (28%)
- Magenta (47%)
- Yellow (58%)

Brightness & Saturation Gradients

These gradients show how the RYB color 184, 150, 106 changes by changing the brightness by 10 percent. The first figure shows a shift by +10% for each color and the second figure -10%.

Similar to the brightness gradients but the following saturation gradients show a change of the RYB color 184, 150, 106 by changing the saturation by 10% instead.

 184, 150, 106

255, 255, 255

 242, 202, 158

 255, 239, 184

 227, 255, 212

 241, 255, 241

 184, 150, 106

 156, 125, 82

 129, 99, 58

 102, 76, 36

 77, 54, 15

 52, 28, 0

 29, 0, 1

 0, 0, 0

 184, 150, 106

 184, 141, 88

 184, 150, 106

 184, 159, 124

184, 135, 69

184, 167, 143

184, 126, 51

184, 173, 161

184, 118, 32

184, 181, 180

184, 109, 14

184, 189, 198

184, 103, 0

184, 197, 216

184, 204, 235

184, 211, 253

184, 215, 255

Harmonies

Analogous

The Analogous color harmony consists of three colors that are next to each other on the color wheel.



193, 128, 125



184, 150, 106



132, 165, 97

Triad

The Triadic color harmony groups three colors that are evenly spaced from another and form a triangle on the color wheel.



184, 150, 106



85, 127, 158



144, 140, 189

Complementary

The Complementary color scheme is a pair of colors which are on the opposite of each other on the color wheel.



184, 150, 106



106, 136, 184

Split Complementary

Split-complementary colors differ from the complementary color scheme. The scheme consists of three colors, the original color and two neighbors of the complement color.



108, 135, 193



184, 150, 106



66, 114, 165

Square

The Square scheme is like the rectangle color scheme, but the four colors are evenly spaced on the color wheel.



184, 150, 106



112, 151, 155



75, 121, 184



173, 132, 173

Rectangle

The Rectangle color scheme consists of four colors that form a rectangle on the color wheel.



184, 150, 106



99, 149, 98



75, 121, 184



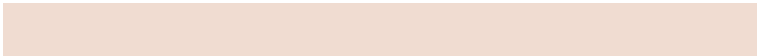
132, 141, 191

Sweetspot

The Sweet Spot groups the original color and five complimentary colors.



184, 150, 106



240, 226, 209



184, 106, 157



120, 112, 101



247, 247, 247



120, 120, 120

Same Dimension

The Same Dimension uses a secret algorithm to generate beautiful new colors.



184, 150, 106



240, 188, 117



120, 184, 106



92, 88, 83



156, 87, 0



28, 16, 0

Inverse Universe

The Inverse Universe completely reimagines the original color for something new.



106, 136, 184



117, 165, 240



106, 116, 184



83, 86, 92



0, 61, 156



0, 11, 28

Previews

White Background



This preview shows how the RYB color 184, 150, 106 looks on a white background.

Color Contrast Check

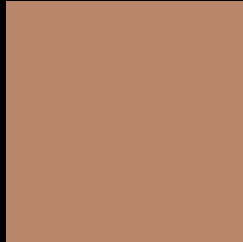
Large Text (above 18pt) WCAG AA ✓ Pass

Any Text WCAG AA × Fail

Large Text (above 18pt) WCAG AAA × Fail

Any Text WCAG AAA × Fail

Black Background



This preview shows how the RYB color 184, 150, 106 looks on a black background.

Color Contrast Check

Large Text (above 18pt) WCAG AA ✓ Pass

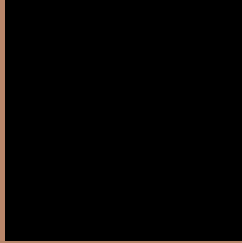
Any Text WCAG AA ✓ Pass

Large Text (above 18pt) WCAG AAA ✓ Pass

Any Text WCAG AAA × Fail

If you want to check with other color combinations, try the [Color Contrast Checker](#).

RYB 184, 150, 106 Background



This preview shows how black text looks on a background with the RYB color 184, 150, 106.



This preview shows how white text looks on a background with the RYB color 184, 150, 106.

Color Blindness Simulation

Color vision deficiency is a very complex topic, and I could not describe the different causes any better than Wikipedia does, so if you want to learn more, you should check out their [article about color blindness](#).

Dichromacy



Original Color
[184, 150, 106](#)

Protanopia
[124, 155, 111](#)

Deuteranopia
[170, 172, 105](#)



Tritanopia
187, 130, 139

Trichromacy



Original Color

184, 150, 106

Protanomaly

154, 166, 109

Deuteranomaly

176, 163, 105

Tritanomaly

186, 132, 127

Monochromacy



Original Color

184, 150, 106

Achromatopsia

146, 146, 146

Achromatomaly

160, 149, 131

CSS Examples

Text

The CSS property to change the color of the text to RYB 184, 150, 106 is called "color". The color property can be set on classes, ids or directly on the HTML element.

This example shows how text in the color `rgb(184, 134, 106)` looks like.

```
.text, #text, p{  
    color:rgb(184, 134, 106)  
}
```

If you want to add a text shadow in that color use the text-shadow property, you can generate a text shadow directly with our [CSS Text Shadow Generator](#).

Here you see how black text with a 4 pixel rgb(184, 134, 106) colored shadow looks like.

```
.shadow{ text-shadow: 4px 4px 2px rgb(184, 134, 106) }
```

Border

The CSS property to change the border of an element to RYB 184, 150, 106 is called "border". The border property can be set on classes, ids or directly on the HTML element.

This example shows the color as border, it can be applied via the CSS property "border" or "border-color".

```
.border, #border, table{ border:4px solid rgb(184, 134, 106) }
```

If only the border color should be changed use the property `border-color`.

```
.border{ border-color:rgb(184, 134, 106) }
```

If you want to add a box shadow in that color use:

Here you see how a box with a 4 pixel `rgb(184, 134, 106)` colored shadow looks like.

```
.boxshadow{ -moz-box-shadow:4px 4px 4px  
4px rgb(184, 134, 106); -webkit-box-  
shadow:4px 4px 4px 4px rgb(184, 134, 106);  
box-shadow:4px 4px 4px 4px rgb(184, 134,  
106) }
```

Background

The CSS property to change the background color of an element to RYB 184, 150, 106 is called "background". The background property can be set on classes, ids or directly on the HTML element.

```
.background, #background, body{  
background: rgb(184, 134, 106) }
```

If only the background color should be changed can be used:

```
.background{ background-color: rgb(184,  
134, 106) }
```

This example shows the color as background, it is applied via the CSS property "background".

To optimize and compress your CSS code, you can use our [online CSS compressor and optimizer](#) based on csstidy. If you want to create a linear or radial gradient as background or border, check our [CSS Gradient Generator](#).

Hey! You found this booklet interesting? Support Converting Colors with the new Membership Option!

The pro membership hides all ads, plus gives you double the colors in the color bucket, and more awesome pro features!

[Learn more, Memberships starting at \\$2.50/m!](#)

**Follow me
on Twitter!**

@ConvertingColor