

Converting Colors

`RYB(184, 152, 161)`

Have a look what the booklet for
RYB(184, 152, 161) contains.

RYB(184, 152, 161)	3
<i>Conversions</i>	4
<i>Details</i>	6
<i>Harmonies</i>	11
<i>Previews</i>	23
<i>Color Blindness Simulation</i>	26
<i>CSS Examples</i>	29

Color

R_YB(184, 152, 161)

Conversions

Conversions Part 1

Format	Color
Hex	B898A1
RGB	184, 152, 161
RGB Percent	72%, 60%, 63%
CMY	0.2784, 0.4039, 0.3686
CMYK	0.00, 0.17, 0.13, 0.28
HSL	343°, 18%, 66%
HSV	343°, 17%, 72%
XYZ	37.4284, 35.2200, 38.5437
YIQ	162.5940, 16.1830, 9.5830

Conversions

Conversions Part 2

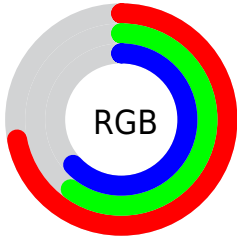
Format	Color
RYB	184, 152, 161
Decimal	12097697
CIELab	65.92, 13.38, -0.24
CIELCh	66, 13.387, 358.977
Yxy	35.2200, 0.3366, 0.3167
Android (android.graphics.Color)	4290287777 (0xFFB898A1)
YUV	162.5940, -0.7858, 18.7731
Hunter-Lab	59.3465, 8.7194, 3.0355

Details

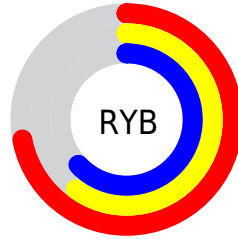
The RYB color **184, 152, 161** is a light color, and the websafe version is hex **CC9999**. A complement of this color would be **152, 171, 184**, and the grayscale version is **163, 163, 163**.

A 20% lighter version of the original color is **240, 206, 216**, and **131, 101, 110** is the 20% darker color. If you saturate the color by 10%, you get **184, 134, 148**, and if you desaturate by 10%, it is **184, 170, 174**.

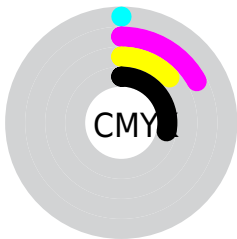
Distribution



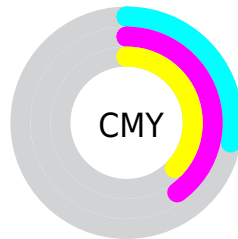
- Red (72%)
- Green (60%)
- Blue (63%)



- Red (72%)
- Yellow (60%)
- Blue (63%)



- Cyan (0%)
- Magenta (17%)
- Yellow (13%)
- Black (28%)




- Cyan (28%)
- Magenta (40%)
- Yellow (37%)

Brightness & Saturation Gradients

These gradients show how the RYB color 184, 152, 161 changes by changing the brightness by 10 percent. The first figure shows a shift by +10% for each color and the second figure -10%.

Similar to the brightness gradients but the following saturation gradients show a change of the RYB color 184, 152, 161 by changing the saturation by 10% instead.

 184, 152, 161


255, 255, 255

 240, 206, 216


 255, 235, 244

 184, 152, 161

 157, 126, 135

 131, 101, 110


 105, 77, 85


 81, 54, 62


 57, 32, 40

 35, 11, 20


 0, 0, 0

 184, 152, 161

 184, 134, 148

 184, 152, 161

 184, 170, 174

 184, 115, 135

 184, 187, 189

 184, 97, 121

 184, 197, 207

 184, 78, 108

 184, 209, 226

 184, 60, 95

 184, 219, 244

 184, 42, 82

 184, 224, 255

 184, 23, 68

 184, 220, 255

 184, 5, 55

 184, 220, 255

 184, 0, 52

Harmonies

Analogous

The Analogous color harmony consists of three colors that are next to each other on the color wheel.



176, 154, 173



184, 152, 161



186, 153, 149

Triad

The Triadic color harmony groups three colors that are evenly spaced from another and form a triangle on the color wheel.



184, 152, 161



139, 163, 145



134, 153, 180

Complementary

The Complementary color scheme is a pair of colors which are on the opposite of each other on the color wheel.



184, 152, 161



152, 171, 184

Split Complementary

Split-complementary colors differ from the complementary color scheme. The scheme consists of three colors, the original color and two neighbors of the complement color.



129, 149, 171



184, 152, 161



143, 163, 166

Square

The Square scheme is like the rectangle color scheme, but the four colors are evenly spaced on the color wheel.



184, 152, 161



152, 170, 136



133, 152, 167



147, 157, 184

Rectangle

The Rectangle color scheme consists of four colors that form a rectangle on the color wheel.



184, 152, 161



183, 158, 143



133, 152, 167



132, 152, 178

Sweetspot

The Sweet Spot groups the original color and five complimentary colors.



184, 152, 161



240, 228, 231



175, 152, 184



120, 113, 115



247, 247, 247



120, 120, 120

Same Dimension

The Same Dimension uses a secret algorithm to generate beautiful new colors.



184, 152, 161



240, 189, 204



184, 161, 152



92, 83, 85



156, 0, 44



28, 0, 8

Inverse Universe

The Inverse Universe completely reimagines the original color for something new.



184, 152, 161



240, 189, 204



152, 166, 184



92, 83, 85



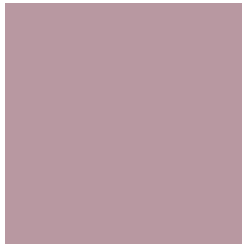
156, 0, 44



28, 0, 8

Previews

White Background



This preview shows how the RYB color 184, 152, 161 looks on a white background.

Color Contrast Check

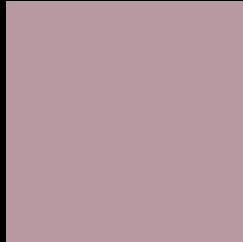
Large Text (above 18pt) WCAG AA × Fail

Any Text WCAG AA × Fail

Large Text (above 18pt) WCAG AAA × Fail

Any Text WCAG AAA × Fail

Black Background



This preview shows how the RYB color 184, 152, 161 looks on a black background.

Color Contrast Check

Large Text (above 18pt) WCAG AA ✓ Pass

Any Text WCAG AA ✓ Pass

Large Text (above 18pt) WCAG AAA ✓ Pass

Any Text WCAG AAA ✓ Pass

If you want to check with other color combinations, try the [Color Contrast Checker](#).

R/Y/B 184, 152, 161 Background



This preview shows how black text looks on a background with the R/Y/B color 184, 152, 161.



This preview shows how white text looks on a background with the R/Y/B color 184, 152, 161.

Color Blindness Simulation

Color vision deficiency is a very complex topic, and I could not describe the different causes any better than Wikipedia does, so if you want to learn more, you should check out their [article about color blindness](#).

Dichromacy



Original Color


184, 152, 161

Protanopia

162, 159, 165

Deuteranopia

176, 155, 160



Tritanopia
184, 152, 163

Trichromacy



Original Color
184, 152, 161

Protanomaly
170, 156, 164

Deuteranomaly
179, 154, 160

Tritanomaly
184, 152, 162

Monochromacy



Original Color
184, 152, 161

Achromatopsia
163, 163, 163

Achromatomaly
171, 159, 162

CSS Examples

Text

The CSS property to change the color of the text to RYB 184, 152, 161 is called "color". The color property can be set on classes, ids or directly on the HTML element.

This example shows how text in the color rgb(184, 152, 161) looks like.

```
.text, #text, p{  
    color:rgb(184, 152, 161)  
}
```

If you want to add a text shadow in that color use the text-shadow property, you can generate a text shadow directly with our [CSS Text Shadow Generator](#).

Here you see how black text with a 4 pixel rgb(184, 152, 161) colored shadow looks like.

```
.shadow{ text-shadow: 4px 4px 2px rgb(184, 152, 161) }
```

Border

The CSS property to change the border of an element to RYB 184, 152, 161 is called "border". The border property can be set on classes, ids or directly on the HTML element.

This example shows the color as border, it can be applied via the CSS property "border" or "border-color".

```
.border, #border, table{ border:4px solid rgb(184, 152, 161) }
```

If only the border color should be changed use the property `border-color`.

```
.border{ border-color:rgb(184, 152, 161) }
```

If you want to add a box shadow in that color use:

Here you see how a box with a 4 pixel `rgb(184, 152, 161)` colored shadow looks like.

```
.boxshadow{ -moz-box-shadow:4px 4px 4px  
4px rgb(184, 152, 161); -webkit-box-  
shadow:4px 4px 4px 4px rgb(184, 152, 161);  
box-shadow:4px 4px 4px 4px rgb(184, 152,  
161) }
```

Background

The CSS property to change the background color of an element to RYB 184, 152, 161 is called "background". The background property can be set on classes, ids or directly on the HTML element.

```
.background, #background, body{  
background: rgb(184, 152, 161) }
```

If only the background color should be changed can be used:

```
.background{ background-color: rgb(184,  
152, 161) }
```

This example shows the color as background, it is applied via the CSS property "background".

To optimize and compress your CSS code, you can use our [online CSS compressor and optimizer](#) based on csstidy. If you want to create a linear or radial gradient as background or border, check our [CSS Gradient Generator](#).

Hey! You found this booklet interesting? Support Converting Colors with the new Membership Option!

The pro membership hides all ads, plus gives you double the colors in the color bucket, and more awesome pro features!

[Learn more, Memberships starting at \\$2.50/m!](#)

**Follow me
on Twitter!**

@ConvertingColor