

Converting Colors

`RYB(184, 152, 87)`

Have a look what the booklet for
RYB(184, 152, 87) contains.

RYB(184, 152, 87)	3
<i>Conversions</i>	4
<i>Details</i>	6
<i>Harmonies</i>	11
<i>Previews</i>	23
<i>Color Blindness Simulation</i>	26
<i>CSS Examples</i>	29

Color

R_YB(184, 152, 87)

Conversions

Conversions Part 1

Format	Color
Hex	B87E57
RGB	184, 126, 87
RGB Percent	72%, 49%, 34%
CMY	0.2784, 0.5062, 0.6588
CMYK	0.00, 0.32, 0.53, 0.28
HSL	24°, 41%, 53%
HSV	24°, 53%, 72%
XYZ	28.9381, 25.7797, 12.4676
YIQ	138.8960, 47.0870, 0.1670

Conversions

Conversions Part 2

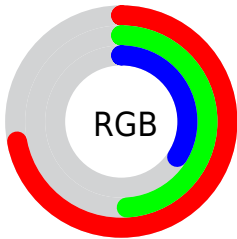
Format	Color
RYB	184, 152, 87
Decimal	12090967
CIELab	57.83, 18.15, 30.17
CIELCh	58, 35.206, 58.974
Yxy	25.7797, 0.4307, 0.3837
Android (android.graphics.Color)	4290281047 (0xFFB87E57)
YUV	138.8960, -25.5847, 39.5562
Hunter-Lab	50.7737, 12.8808, 20.9828

Details

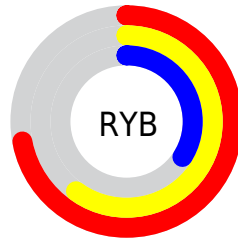
The RYB color **184, 152, 87** is a dark color, and the websafe version is hex **CC9966**. A complement of this color would be **87, 123, 184**, and the grayscale version is **139, 139, 139**.

A 20% lighter version of the original color is **242, 207, 137**, and **128, 104, 40** is the 20% darker color. If you saturate the color by 10%, you get **184, 146, 69**, and if you desaturate by 10%, it is **184, 159, 105**.

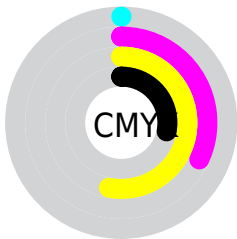
Distribution



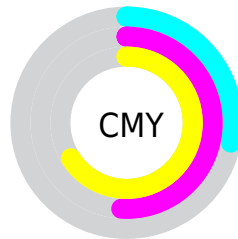
- Red (72%)
- Green (49%)
- Blue (34%)



- Red (72%)
- Yellow (60%)
- Blue (34%)



- Cyan (0%)
- Magenta (32%)
- Yellow (53%)
- Black (28%)




- Cyan (28%)
- Magenta (51%)
- Yellow (66%)

Brightness & Saturation Gradients

These gradients show how the RYB color 184, 152, 87 changes by changing the brightness by 10 percent. The first figure shows a shift by +10% for each color and the second figure -10%.

Similar to the brightness gradients but the following saturation gradients show a change of the RYB color 184, 152, 87 by changing the saturation by 10% instead.

 184, 152, 87  184, 152, 87

255, 255, 255  156, 127, 63

 242, 207, 137  128, 104, 40

 255, 242, 164  101, 82, 18


 220, 255, 191  75, 53, 0

 219, 255, 219  49, 14, 0

 248, 255, 248  20, 0, 0

 0, 0, 0

 184, 152, 87  184, 152, 87

 184, 146, 69  184, 159, 105

184, 140, 50

184, 164, 124

184, 134, 32

184, 171, 142

184, 129, 13

184, 176, 161

184, 124, 0

184, 182, 179

184, 189, 197

184, 196, 216

184, 203, 234

184, 210, 253

Harmonies

Analogous

The Analogous color harmony consists of three colors that are next to each other on the color wheel.



197, 117, 111



184, 152, 87



109, 160, 77

Triad

The Triadic color harmony groups three colors that are evenly spaced from another and form a triangle on the color wheel.



184, 152, 87



43, 104, 155



140, 131, 193

Complementary

The Complementary color scheme is a pair of colors which are on the opposite of each other on the color wheel.



184, 152, 87



87, 123, 184

Split Complementary

Split-complementary colors differ from the complementary color scheme. The scheme consists of three colors, the original color and two neighbors of the complement color.



90, 125, 200



184, 152, 87



0, 81, 168

Square

The Square scheme is like the rectangle color scheme, but the four colors are evenly spaced on the color wheel.



184, 152, 87



91, 140, 152



15, 91, 191



177, 120, 171

Rectangle

The Rectangle color scheme consists of four colors that form a rectangle on the color wheel.



184, 152, 87



79, 143, 83



15, 91, 191



125, 134, 197

Sweetspot

The Sweet Spot groups the original color and five complimentary colors.



184, 152, 87



240, 228, 201



184, 87, 145



120, 112, 97



247, 247, 247



120, 120, 120

Same Dimension

The Same Dimension uses a secret algorithm to generate beautiful new colors.



184, 152, 87



240, 189, 89



98, 184, 87



92, 88, 83



156, 103, 0



28, 18, 0

Inverse Universe

The Inverse Universe completely reimagines the original color for something new.



87, 123, 184



89, 145, 240



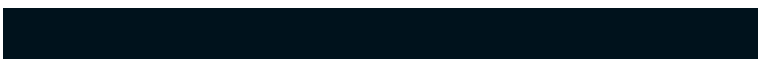
87, 96, 184



83, 86, 92



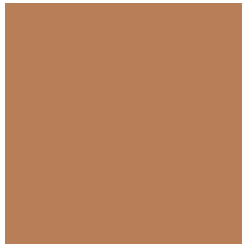
0, 58, 156



0, 11, 28

Previews

White Background



This preview shows how the RYB color 184, 152, 87 looks on a white background.

Color Contrast Check

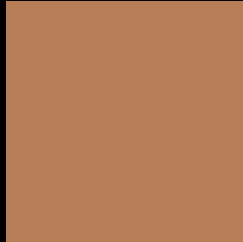
Large Text (above 18pt) WCAG AA ✓ Pass

Any Text WCAG AA ✗ Fail

Large Text (above 18pt) WCAG AAA ✗ Fail

Any Text WCAG AAA ✗ Fail

Black Background



This preview shows how the RYB color 184, 152, 87 looks on a black background.

Color Contrast Check

Large Text (above 18pt) WCAG AA ✓ Pass

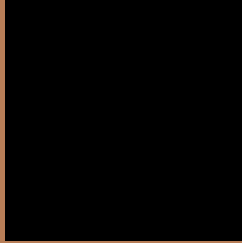
Any Text WCAG AA ✓ Pass

Large Text (above 18pt) WCAG AAA ✓ Pass

Any Text WCAG AAA × Fail

If you want to check with other color combinations, try the [Color Contrast Checker](#).

R Y B 184, 152, 87 Background



This preview shows how black text looks on a background with the RYB color 184, 152, 87.



This preview shows how white text looks on a background with the RYB color 184, 152, 87.

Color Blindness Simulation

Color vision deficiency is a very complex topic, and I could not describe the different causes any better than Wikipedia does, so if you want to learn more, you should check out their [article about color blindness](#).

Dichromacy



Original Color
184, 152, 87

Protanopia
107, 151, 92

Deuteranopia
150, 169, 86



Tritanopia
187, 120, 130

Trichromacy



Original Color
184, 152, 87

Protanomaly
138, 163, 90

Deuteranomaly
174, 174, 86

Tritanomaly
186, 123, 114

Monochromacy



Original Color
184, 152, 87

Achromatopsia
139, 139, 139

Achromatomaly
155, 143, 120

CSS Examples

Text

The CSS property to change the color of the text to RYB 184, 126, 87 is called "color". The color property can be set on classes, ids or directly on the HTML element.

This example shows how text in the color `rgb(184, 126, 87)` looks like.

```
.text, #text, p{  
    color:rgb(184, 126, 87)  
}
```

If you want to add a text shadow in that color use the text-shadow property, you can generate a text shadow directly with our [CSS Text Shadow Generator](#).

Here you see how black text with a 4 pixel rgb(184, 126, 87) colored shadow looks like.

```
.shadow{ text-shadow: 4px 4px 2px rgb(184, 126, 87) }
```

Border

The CSS property to change the border of an element to RYB 184, 152, 87 is called "border". The border property can be set on classes, ids or directly on the HTML element.

This example shows the color as border, it can be applied via the CSS property "border" or "border-color".

```
.border, #border, table{ border:4px solid rgb(184, 126, 87) }
```

If only the border color should be changed use the property `border-color`.

```
.border{ border-color:rgb(184, 126, 87) }
```

If you want to add a box shadow in that color use:

Here you see how a box with a 4 pixel `rgb(184, 126, 87)` colored shadow looks like.

```
.boxshadow{ -moz-box-shadow:4px 4px 4px  
4px rgb(184, 126, 87); -webkit-box-  
shadow:4px 4px 4px 4px rgb(184, 126, 87);  
box-shadow:4px 4px 4px 4px rgb(184, 126,  
87) }
```

Background

The CSS property to change the background color of an element to RGB 184, 126, 87 is called "background". The background property can be set on classes, ids or directly on the HTML element.

```
.background, #background, body{  
background: rgb(184, 126, 87) }
```

If only the background color should be changed can be used:

```
.background{ background-color: rgb(184,  
126, 87) }
```

This example shows the color as background, it is applied via the CSS property "background".

To optimize and compress your CSS code, you can use our [online CSS compressor and optimizer](#) based on csstidy. If you want to create a linear or radial gradient as background or border, check our [CSS Gradient Generator](#).

Hey! You found this booklet interesting? Support Converting Colors with the new Membership Option!

The pro membership hides all ads, plus gives you double the colors in the color bucket, and more awesome pro features!

[Learn more, Memberships starting at \\$2.50/m!](#)

**Follow me
on Twitter!**

@ConvertingColor