

# Converting Colors

`RYB(185, 133, 121)`

Have a look what the booklet for  
RYB(185, 133, 121) contains.

<b>RYB(185, 133, 121)</b> .....	3
<i><b>Conversions</b></i> .....	4
<i><b>Details</b></i> .....	6
<i><b>Harmonies</b></i> .....	11
<i><b>Previews</b></i> .....	23
<i><b>Color Blindness Simulation</b></i> .....	26
<i><b>CSS Examples</b></i> .....	29

# Color

**R<sub>Y</sub>B(185, 133, 121)**

# Conversions

## Conversions Part 1

<b>Format</b>	<b>Color</b>
Hex	B98379
RGB	185, 131, 121
RGB Percent	73%, 51%, 47%
CMY	0.2745, 0.4859, 0.5255
CMYK	0.00, 0.29, 0.35, 0.27
HSL	9°, 31%, 60%
HSV	9°, 35%, 73%
XYZ	31.5892, 27.9557, 21.8202
YIQ	146.0060, 35.3940, 8.3380

# Conversions

## Conversions Part 2

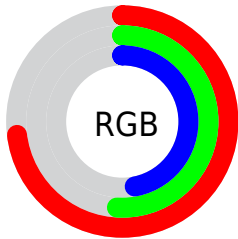
<b>Format</b>	<b>Color</b>
<b>R<sub>YB</sub></b>	185, 133, 121
Decimal	12157817
CIE Lab	59.85, 19.41, 13.73
CIE LCh	60, 23.775, 35.288
Yxy	27.9557, 0.3882, 0.3436
Android (android.graphics.Color)	4290347897 (0xFFB98379)
YUV	146.0060, -12.3280, 34.1977
Hunter-Lab	52.8731, 14.1175, 12.5428

# Details

The RYB color **185, 133, 121** is a dark color, and the websafe version is hex **CC9999**. A complement of this color would be **121, 150, 185**, and the grayscale version is **146, 146, 146**.

A 20% lighter version of the original color is **242, 186, 173**, and **130, 83, 72** is the 20% darker color. If you saturate the color by 10%, you get **185, 118, 103**, and if you desaturate by 10%, it is **185, 149, 139**.

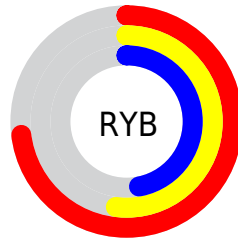
# Distribution



Red (73%)

Green (51%)

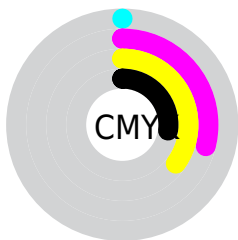
Blue (47%)



Red (73%)

Yellow (52%)

Blue (47%)

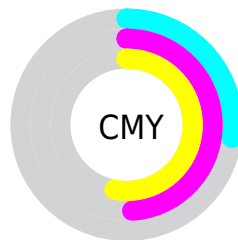


Cyan (0%)

Magenta (29%)

Yellow (35%)

Black (27%)



Cyan (27%)

Magenta (49%)

Yellow (53%)

# Brightness & Saturation Gradients


These gradients show how the RYB color 185, 133, 121 changes by changing the brightness by 10 percent. The first figure shows a shift by +10% for each color and the second figure -10%.

Similar to the brightness gradients but the following saturation gradients show a change of the RYB color 185, 133, 121 by changing the saturation by 10% instead.



 185, 133, 121

255, 255, 255

 242, 186, 173

 255, 215, 201

 255, 251, 229

 185, 133, 121

 157, 108, 96

 130, 83, 72

 104, 59, 50

 78, 37, 29

 54, 17, 4

 33, 0, 1


 0, 0, 0

 185, 133, 121

 185, 118, 103

 185, 133, 121

 185, 149, 139

 185, 103, 84

 185, 163, 158

 185, 88, 65

 185, 178, 177

 185, 73, 47

 185, 189, 195

 185, 58, 28

 185, 198, 213

 185, 43, 10

 185, 207, 232

 185, 34, 0

 185, 215, 251

 185, 220, 255

# Harmonies

## Analogous

The Analogous color harmony consists of three colors that are next to each other on the color wheel.



185, 129, 141



185, 133, 121



174, 161, 107

# Triad

The Triadic color harmony groups three colors that are evenly spaced from another and form a triangle on the color wheel.



185, 133, 121



109, 142, 154



123, 139, 186

# Complementary

The Complementary color scheme is a pair of colors which are on the opposite of each other on the color wheel.



185, 133, 121



121, 150, 185

# Split Complementary

Split-complementary colors differ from the complementary color scheme. The scheme consists of three colors, the original color and two neighbors of the complement color.



95, 129, 182



185, 133, 121



88, 124, 156

# Square

The Square scheme is like the rectangle color scheme, but the four colors are evenly spaced on the color wheel.



185, 133, 121



110, 150, 127



81, 121, 168



152, 138, 178

# Rectangle

The Rectangle color scheme consists of four colors that form a rectangle on the color wheel.



185, 133, 121



133, 162, 103



81, 121, 168



113, 136, 185



# Sweetspot

The Sweet Spot groups the original color and five complimentary colors.



185, 133, 121



240, 221, 216



185, 121, 175



120, 109, 105



247, 247, 247



120, 120, 120



# Same Dimension

The Same Dimension uses a secret algorithm to generate beautiful new colors.



185, 133, 121



240, 158, 139



155, 185, 121



92, 84, 83



156, 30, 0



28, 5, 0



# Inverse Universe

The Inverse Universe completely reimagines the original color for something new.



121, 150, 185



139, 185, 240



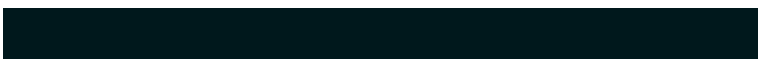
121, 137, 185



83, 87, 92



0, 71, 156



0, 13, 28



# Previews

## White Background



This preview shows how the RYB color 185, 133, 121 looks on a white background.

## Color Contrast Check

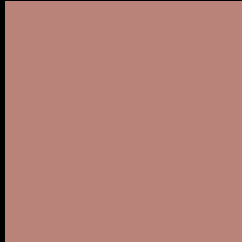
Large Text (above 18pt) WCAG AA ✓ Pass

Any Text WCAG AA ✗ Fail

Large Text (above 18pt) WCAG AAA ✗ Fail

Any Text WCAG AAA ✗ Fail

# Black Background



This preview shows how the RYB color 185, 133, 121 looks on a black background.

## Color Contrast Check

Large Text (above 18pt) WCAG AA ✓ Pass

Any Text WCAG AA ✓ Pass

Large Text (above 18pt) WCAG AAA ✓ Pass

Any Text WCAG AAA × Fail

If you want to check with other color combinations, try the [Color Contrast Checker](#).



## **RYB 185, 133, 121 Background**



This preview shows how black text looks on a background with the RYB color 185, 133, 121.

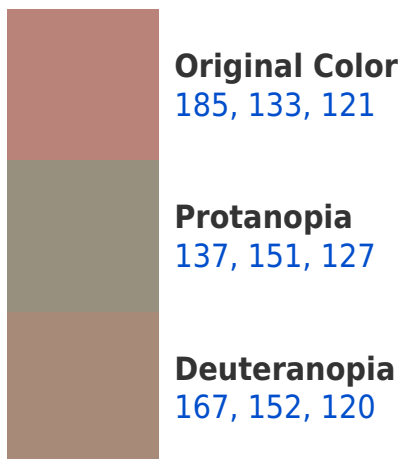


This preview shows how white text looks on a background with the RYB color 185, 133, 121.

# Color Blindness Simulation

Color vision deficiency is a very complex topic, and I could not describe the different causes any better than Wikipedia does, so if you want to learn more, you should check out their [article about color blindness](#).

## Dichromacy





**Tritanopia**  
187, 129, 138

# Trichromacy



**Original Color**

185, 133, 121

**Protanomaly**

163, 147, 125

**Deuteranomaly**

174, 143, 120

**Tritanomaly**

186, 130, 132

# Monochromacy



**Original Color**

185, 133, 121

**Achromatopsia**

146, 146, 146

**Achromatomaly**

160, 142, 137

# CSS Examples

## Text

The CSS property to change the color of the text to RYB 185, 133, 121 is called "color". The color property can be set on classes, ids or directly on the HTML element.

This example shows how text in the color `rgb(185, 131, 121)` looks like.

```
.text, #text, p{  
    color:rgb(185, 131, 121)  
}
```

If you want to add a text shadow in that color use the text-shadow property, you can generate a text shadow directly with our [CSS Text Shadow Generator](#).

Here you see how black text with a 4 pixel rgb(185, 131, 121) colored shadow looks like.

```
.shadow{ text-shadow: 4px 4px 2px rgb(185, 131, 121) }
```

## Border

The CSS property to change the border of an element to RYB 185, 133, 121 is called "border". The border property can be set on classes, ids or directly on the HTML element.

This example shows the color as border, it can be applied via the CSS property "border" or "border-color".

```
.border, #border, table{ border:4px solid rgb(185, 131, 121) }
```

If only the border color should be changed use the property `border-color`.

```
.border{ border-color:rgb(185, 131, 121) }
```

If you want to add a box shadow in that color use:

Here you see how a box with a 4 pixel `rgb(185, 131, 121)` colored shadow looks like.

```
.boxshadow{ -moz-box-shadow:4px 4px 4px  
4px rgb(185, 131, 121); -webkit-box-  
shadow:4px 4px 4px 4px rgb(185, 131, 121);  
box-shadow:4px 4px 4px 4px rgb(185, 131,  
121) }
```

# Background

The CSS property to change the background color of an element to RYB 185, 133, 121 is called "background". The background property can be set on classes, ids or directly on the HTML element.

```
.background, #background, body{  
background: rgb(185, 131, 121) }
```

If only the background color should be changed can be used:

```
.background{ background-color: rgb(185,  
131, 121) }
```

This example shows the color as background, it is applied via the CSS property "background".

To optimize and compress your CSS code, you can use our [online CSS compressor and optimizer](#) based on csstidy. If you want to create a linear or radial gradient as background or border, check our [CSS Gradient Generator](#).



Hey! You found this booklet interesting? Support Converting Colors with the new Membership Option!

The pro membership hides all ads, plus gives you double the colors in the color bucket, and more awesome pro features!

**[Learn more, Memberships starting at \\$2.50/m!](#)**

**Follow me  
on Twitter!**

@ConvertingColor