

Converting Colors

`RYB(185, 151, 138)`

Have a look what the booklet for
RYB(185, 151, 138) contains.

RYB(185, 151, 138)	3
<i>Conversions</i>	4
<i>Details</i>	6
<i>Harmonies</i>	11
<i>Previews</i>	23
<i>Color Blindness Simulation</i>	26
<i>CSS Examples</i>	29

Color

R_YB(185, 151, 138)

Conversions

Conversions Part 1

Format	Color
Hex	B9948A
RGB	185, 148, 138
RGB Percent	73%, 58%, 54%
CMY	0.2745, 0.4189, 0.4588
CMYK	0.00, 0.20, 0.25, 0.27
HSL	13°, 25%, 63%
HSV	13°, 25%, 73%
XYZ	35.2137, 33.3866, 28.6331
YIQ	157.9230, 25.2620, 4.7340

Conversions

Conversions Part 2

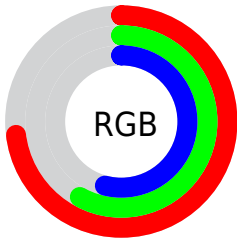
Format	Color
RYB	185, 151, 138
Decimal	12162186
CIELab	64.47, 12.24, 10.61
CIElCh	64, 16.203, 40.913
Yxy	33.3866, 0.3622, 0.3434
Android (android.graphics.Color)	4290352266 (0xFFB9948A)
YUV	157.9230, -9.8220, 23.7465
Hunter-Lab	57.7812, 7.6666, 11.0661

Details

The RYB color **185, 151, 138** is a light color, and the websafe version is hex **CC9999**. A complement of this color would be **138, 159, 185**, and the grayscale version is **158, 158, 158**.

A 20% lighter version of the original color is **242, 205, 191**, and **131, 99, 88** is the 20% darker color. If you saturate the color by 10%, you get **185, 138, 120**, and if you desaturate by 10%, it is **185, 165, 157**.

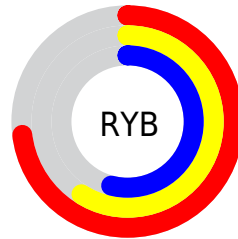
Distribution



Red (73%)

Green (58%)

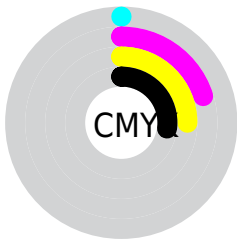
Blue (54%)



Red (73%)

Yellow (59%)

Blue (54%)

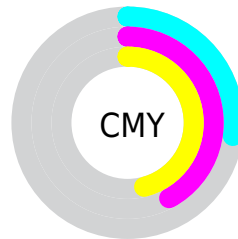


Cyan (0%)

Magenta (20%)

Yellow (25%)

Black (27%)



Cyan (27%)


Magenta (42%)

Yellow (46%)

Brightness & Saturation Gradients

These gradients show how the RYB color 185, 151, 138 changes by changing the brightness by 10 percent. The first figure shows a shift by +10% for each color and the second figure -10%.

Similar to the brightness gradients but the following saturation gradients show a change of the RYB color 185, 151, 138 by changing the saturation by 10% instead.

 185, 151, 138

255, 255, 255


 242, 205, 191

 255, 235, 219

 248, 255, 248

 185, 151, 138

 158, 124, 113

 131, 99, 88

 105, 77, 65

 80, 53, 43

 56, 31, 22


 36, 7, 0

 0, 0, 0

 185, 151, 138

 185, 138, 120

 185, 151, 138

 185, 165, 157

 185, 124, 101

 185, 178, 175

 185, 112, 82

 185, 189, 194

 185, 97, 64

 185, 197, 212

 185, 84, 46

 185, 205, 230

 185, 70, 27

 185, 213, 249

 185, 58, 8

 185, 219, 255

 185, 51, 0

 185, 220, 255

Harmonies

Analogous

The Analogous color harmony consists of three colors that are next to each other on the color wheel.



186, 146, 151



185, 151, 138



176, 174, 129

Triad

The Triadic color harmony groups three colors that are evenly spaced from another and form a triangle on the color wheel.



185, 151, 138



130, 153, 164



147, 154, 184

Complementary

The Complementary color scheme is a pair of colors which are on the opposite of each other on the color wheel.



185, 151, 138



138, 159, 185

Split Complementary

Split-complementary colors differ from the complementary color scheme. The scheme consists of three colors, the original color and two neighbors of the complement color.



129, 149, 183



185, 151, 138



120, 144, 165

Square

The Square scheme is like the rectangle color scheme, but the four colors are evenly spaced on the color wheel.



185, 151, 138



134, 161, 149



119, 144, 175



166, 151, 178

Rectangle

The Rectangle color scheme consists of four colors that form a rectangle on the color wheel.



185, 151, 138



145, 167, 128



119, 144, 175



141, 153, 185

Sweetspot

The Sweet Spot groups the original color and five complimentary colors.



185, 151, 138



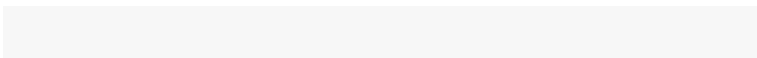
240, 226, 221



185, 138, 175



120, 110, 108



247, 247, 247



120, 120, 120

Same Dimension

The Same Dimension uses a secret algorithm to generate beautiful new colors.



185, 151, 138



240, 187, 168



156, 185, 138



92, 86, 83



156, 43, 0



28, 8, 0

Inverse Universe

The Inverse Universe completely reimagines the original color for something new.



138, 159, 185



168, 200, 240



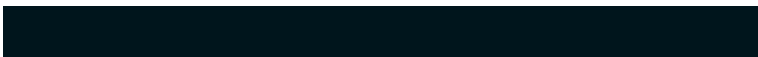
138, 148, 185



83, 87, 92



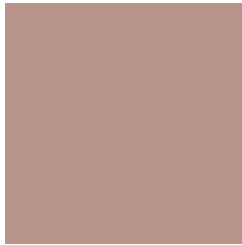
0, 68, 156



0, 12, 28

Previews

White Background



This preview shows how the RYB color 185, 151, 138 looks on a white background.

Color Contrast Check

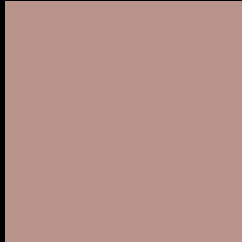
Large Text (above 18pt) WCAG AA × Fail

Any Text WCAG AA × Fail

Large Text (above 18pt) WCAG AAA × Fail

Any Text WCAG AAA × Fail

Black Background



This preview shows how the RYB color 185, 151, 138 looks on a black background.

Color Contrast Check

Large Text (above 18pt) WCAG AA ✓ Pass

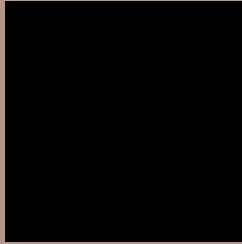
Any Text WCAG AA ✓ Pass

Large Text (above 18pt) WCAG AAA ✓ Pass

Any Text WCAG AAA ✓ Pass

If you want to check with other color combinations, try the [Color Contrast Checker](#).

RYP 185, 151, 138 Background



This preview shows how black text looks on a background with the RYB color 185, 151, 138.



This preview shows how white text looks on a background with the RYB color 185, 151, 138.

Color Blindness Simulation

Color vision deficiency is a very complex topic, and I could not describe the different causes any better than Wikipedia does, so if you want to learn more, you should check out their [article about color blindness](#).

Dichromacy



Original Color
185, 151, 138

Protanopia
153, 163, 142

Deuteranopia
179, 157, 138



Tritanopia
187, 145, 157

Trichromacy



Original Color

185, 151, 138

Protanomaly

171, 161, 141

Deuteranomaly

181, 155, 138

Tritanomaly

186, 146, 150

Monochromacy



Original Color

185, 151, 138

Achromatopsia

158, 158, 158

Achromatomaly

168, 155, 151

CSS Examples

Text

The CSS property to change the color of the text to RYB 185, 151, 138 is called "color". The color property can be set on classes, ids or directly on the HTML element.

This example shows how text in the color rgb(185, 148, 138) looks like.

```
.text, #text, p{  
    color:rgb(185, 148, 138)  
}
```

If you want to add a text shadow in that color use the text-shadow property, you can generate a text shadow directly with our [CSS Text Shadow Generator](#).

Here you see how black text with a 4 pixel rgb(185, 148, 138) colored shadow looks like.

```
.shadow{ text-shadow: 4px 4px 2px rgb(185, 148, 138) }
```

Border

The CSS property to change the border of an element to RYB 185, 151, 138 is called "border". The border property can be set on classes, ids or directly on the HTML element.

This example shows the color as border, it can be applied via the CSS property "border" or "border-color".

```
.border, #border, table{ border:4px solid rgb(185, 148, 138) }
```

If only the border color should be changed use the property `border-color`.

```
.border{ border-color:rgb(185, 148, 138) }
```

If you want to add a box shadow in that color use:

Here you see how a box with a 4 pixel `rgb(185, 148, 138)` colored shadow looks like.

```
.boxshadow{ -moz-box-shadow:4px 4px 4px  
4px rgb(185, 148, 138); -webkit-box-  
shadow:4px 4px 4px 4px rgb(185, 148, 138);  
box-shadow:4px 4px 4px 4px rgb(185, 148,  
138) }
```

Background

The CSS property to change the background color of an element to RYB 185, 151, 138 is called "background". The background property can be set on classes, ids or directly on the HTML element.

```
.background, #background, body{  
background: rgb(185, 148, 138) }
```

If only the background color should be changed can be used:

```
.background{ background-color: rgb(185,  
148, 138) }
```

This example shows the color as background, it is applied via the CSS property "background".

To optimize and compress your CSS code, you can use our [online CSS compressor and optimizer](#) based on csstidy. If you want to create a linear or radial gradient as background or border, check our [CSS Gradient Generator](#).

Hey! You found this booklet interesting? Support Converting Colors with the new Membership Option!

The pro membership hides all ads, plus gives you double the colors in the color bucket, and more awesome pro features!

[Learn more, Memberships starting at \\$2.50/m!](#)

**Follow me
on Twitter!**

@ConvertingColor