

# Converting Colors

`RYB(186, 120, 115)`

Have a look what the booklet for  
RYB(186, 120, 115) contains.

<b>RYB(186, 120, 115)</b> .....	3
<i><b>Conversions</b></i> .....	4
<i><b>Details</b></i> .....	6
<i><b>Harmonies</b></i> .....	11
<i><b>Previews</b></i> .....	23
<i><b>Color Blindness Simulation</b></i> .....	26
<i><b>CSS Examples</b></i> .....	29

# Color

**R<sub>Y</sub>B(186, 120, 115)**

# Conversions

## Conversions Part 1

<b>Format</b>	<b>Color</b>
Hex	BA7873
RGB	186, 120, 115
RGB Percent	73%, 47%, 45%
CMY	0.2706, 0.5307, 0.5490
CMYK	0.00, 0.36, 0.38, 0.27
HSL	4°, 34%, 59%
HSV	4°, 38%, 73%
XYZ	30.0212, 25.0309, 19.4688
YIQ	139.1640, 40.9410, 12.4370

# Conversions

## Conversions Part 2

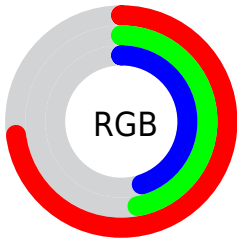
<b>Format</b>	<b>Color</b>
<b>R<sub>YB</sub></b>	186, 120, 115
Decimal	12220531
CIE <sub>Lab</sub>	57.11, 25.40, 13.37
CIE <sub>LCh</sub>	57, 28.706, 27.759
Yxy	25.0309, 0.4029, 0.3359
Android (android.graphics.Color)	4290410611 (0xFFBA7873)
YUV	139.1640, -11.9129, 41.0752
Hunter-Lab	50.0308, 19.5556, 11.9497

# Details

The RYB color **186, 120, 115** is a dark color, and the websafe version is hex **996666**. A complement of this color would be **115, 149, 186**, and the grayscale version is **139, 139, 139**.

A 20% lighter version of the original color is **244, 174, 167**, and **131, 70, 67** is the 20% darker color. If you saturate the color by 10%, you get **186, 102, 96**, and if you desaturate by 10%, it is **186, 137, 134**.

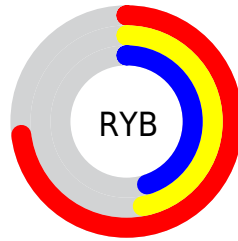
# Distribution



Red (73%)

Green (47%)

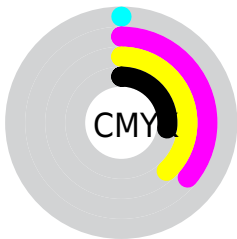
Blue (45%)



Red (73%)

Yellow (47%)

Blue (45%)

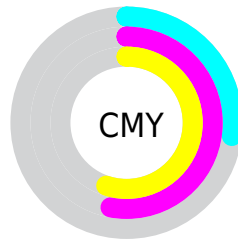


Cyan (0%)

Magenta (36%)

Yellow (38%)

Black (27%)



Cyan (27%)

Magenta (53%)

Yellow (55%)

# Brightness & Saturation Gradients


These gradients show how the RYB color 186, 120, 115 changes by changing the brightness by 10 percent. The first figure shows a shift by +10% for each color and the second figure -10%.

Similar to the brightness gradients but the following saturation gradients show a change of the RYB color 186, 120, 115 by changing the saturation by 10% instead.



 186, 120, 115

255, 255, 255

 244, 174, 167


 255, 201, 194

 255, 229, 222


 251, 255, 251

 186, 120, 115

 158, 94, 90

 131, 70, 67

 104, 47, 45

 78, 24, 24

 53, 1, 0

 26, 0, 1

 0, 0, 0

 186, 120, 115

 186, 102, 96

 186, 120, 115

 186, 137, 134

 186, 85, 78

 186, 154, 152

 186, 69, 59

 186, 172, 171

 186, 51, 41

 186, 188, 189

 186, 34, 22

 186, 197, 208

 186, 16, 3

 186, 206, 227

 186, 13, 0

 186, 214, 245

 186, 221, 255

# Harmonies

## Analogous

The Analogous color harmony consists of three colors that are next to each other on the color wheel.



184, 118, 140



186, 120, 115



176, 144, 96

# Triad

The Triadic color harmony groups three colors that are evenly spaced from another and form a triangle on the color wheel.



186, 120, 115



101, 140, 148



100, 127, 187

# Complementary

The Complementary color scheme is a pair of colors which are on the opposite of each other on the color wheel.



186, 120, 115



115, 149, 186

# Split Complementary

Split-complementary colors differ from the complementary color scheme. The scheme consists of three colors, the original color and two neighbors of the complement color.



62, 111, 179



186, 120, 115



70, 115, 151

# Square

The Square scheme is like the rectangle color scheme, but the four colors are evenly spaced on the color wheel.



186, 120, 115



92, 143, 105



49, 102, 159



138, 131, 181

# Rectangle

The Rectangle color scheme consists of four colors that form a rectangle on the color wheel.



186, 120, 115



141, 163, 88



49, 102, 159



86, 122, 185



# Sweetspot

The Sweet Spot groups the original color and five complimentary colors.



186, 120, 115



242, 217, 216



186, 115, 182



122, 108, 106



250, 250, 250



122, 122, 122



# Same Dimension

The Same Dimension uses a secret algorithm to generate beautiful new colors.



186, 120, 115



242, 138, 131



173, 186, 115



92, 83, 83



156, 11, 0



28, 2, 0



# Inverse Universe

The Inverse Universe completely reimagines the original color for something new.



115, 149, 186



131, 185, 242



115, 137, 186



83, 87, 92



0, 75, 156

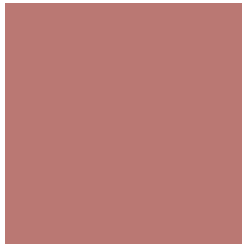


0, 13, 28



# Previews

## White Background



This preview shows how the RYB color 186, 120, 115 looks on a white background.

## Color Contrast Check

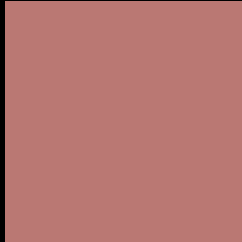
Large Text (above 18pt) WCAG AA ✓ Pass

Any Text WCAG AA × Fail

Large Text (above 18pt) WCAG AAA × Fail

Any Text WCAG AAA × Fail

# Black Background



This preview shows how the RYB color 186, 120, 115 looks on a black background.

## Color Contrast Check

Large Text (above 18pt) WCAG AA ✓ Pass

Any Text WCAG AA ✓ Pass

Large Text (above 18pt) WCAG AAA ✓ Pass

Any Text WCAG AAA × Fail

If you want to check with other color combinations, try the [Color Contrast Checker](#).



## **RYB 186, 120, 115 Background**



This preview shows how black text looks on a background with the RYB color 186, 120, 115.

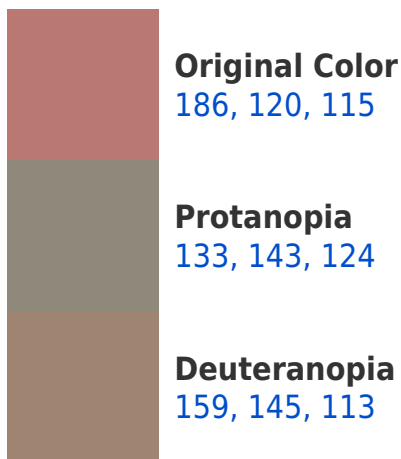


This preview shows how white text looks on a background with the RYB color 186, 120, 115.

# Color Blindness Simulation

Color vision deficiency is a very complex topic, and I could not describe the different causes any better than Wikipedia does, so if you want to learn more, you should check out their [article about color blindness](#).

## Dichromacy





**Tritanopia**  
187, 118, 127

# Trichromacy



**Original Color**

186, 120, 115

**Protanomaly**

159, 135, 121

**Deuteranomaly**

169, 133, 114

**Tritanomaly**

187, 119, 123

# Monochromacy



**Original Color**

186, 120, 115

**Achromatopsia**

139, 139, 139

**Achromatomaly**

156, 132, 130

# CSS Examples

## Text

The CSS property to change the color of the text to RYB 186, 120, 115 is called "color". The color property can be set on classes, ids or directly on the HTML element.

This example shows how text in the color `rgb(186, 120, 115)` looks like.

```
.text, #text, p{  
    color:rgb(186, 120, 115)  
}
```

If you want to add a text shadow in that color use the text-shadow property, you can generate a text shadow directly with our [CSS Text Shadow Generator](#).

Here you see how black text with a 4 pixel rgb(186, 120, 115) colored shadow looks like.

```
.shadow{ text-shadow: 4px 4px 2px rgb(186, 120, 115) }
```

## Border

The CSS property to change the border of an element to RYB 186, 120, 115 is called "border". The border property can be set on classes, ids or directly on the HTML element.

This example shows the color as border, it can be applied via the CSS property "border" or "border-color".

```
.border, #border, table{ border:4px solid rgb(186, 120, 115) }
```

If only the border color should be changed use the property `border-color`.

```
.border{ border-color:rgb(186, 120, 115) }
```

If you want to add a box shadow in that color use:

Here you see how a box with a 4 pixel `rgb(186, 120, 115)` colored shadow looks like.

```
.boxshadow{ -moz-box-shadow:4px 4px 4px  
4px rgb(186, 120, 115); -webkit-box-  
shadow:4px 4px 4px 4px rgb(186, 120, 115);  
box-shadow:4px 4px 4px 4px rgb(186, 120,  
115) }
```

# Background

The CSS property to change the background color of an element to RYB 186, 120, 115 is called "background". The background property can be set on classes, ids or directly on the HTML element.

```
.background, #background, body{  
background: rgb(186, 120, 115) }
```

If only the background color should be changed can be used:

```
.background{ background-color: rgb(186,  
120, 115) }
```

This example shows the color as background, it is applied via the CSS property "background".

To optimize and compress your CSS code, you can use our [online CSS compressor and optimizer](#) based on csstidy. If you want to create a linear or radial gradient as background or border, check our [CSS Gradient Generator](#).



Hey! You found this booklet interesting? Support Converting Colors with the new Membership Option!

The pro membership hides all ads, plus gives you double the colors in the color bucket, and more awesome pro features!

**[Learn more, Memberships starting at \\$2.50/m!](#)**

**Follow me  
on Twitter!**

@ConvertingColor