

Converting Colors

`RYB(186, 130, 130)`

Have a look what the booklet for
RYB(186, 130, 130) contains.

RYB(186, 130, 130)	3
<i>Conversions</i>	4
<i>Details</i>	6
<i>Harmonies</i>	11
<i>Previews</i>	23
<i>Color Blindness Simulation</i>	26
<i>CSS Examples</i>	29

Color

R_YB(186, 130, 130)

Conversions

Conversions Part 1

Format	Color
Hex	BA8282
RGB	186, 130, 130
RGB Percent	73%, 51%, 51%
CMY	0.2706, 0.4902, 0.4902
CMYK	0.00, 0.30, 0.30, 0.27
HSL	0°, 29%, 62%
HSV	0°, 30%, 73%
XYZ	32.2616, 28.0161, 24.8264
YIQ	146.7440, 33.3760, 11.8720

Conversions

Conversions Part 2

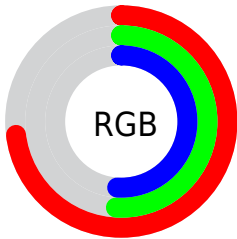
Format	Color
RYB	186, 130, 130
Decimal	12223106
CIELab	59.90, 21.61, 8.68
CIElCh	60, 23.291, 21.891
Yxy	28.0161, 0.3791, 0.3292
Android (android.graphics.Color)	4290413186 (0xFFBA8282)
YUV	146.7440, -8.2548, 34.4275
Hunter-Lab	52.9302, 16.1700, 9.2418

Details

The RYB color **186, 130, 130** is a light color, and the websafe version is hex **CC9999**. A complement of this color would be **130, 158, 186**, and the grayscale version is **147, 147, 147**.

A 20% lighter version of the original color is **243, 183, 183**, and **131, 80, 81** is the 20% darker color. If you saturate the color by 10%, you get **186, 111, 111**, and if you desaturate by 10%, it is **186, 149, 149**.

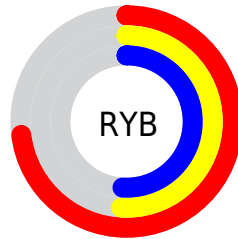
Distribution



Red (73%)

Green (51%)

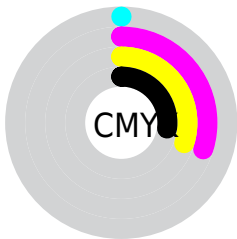
Blue (51%)



Red (73%)

Yellow (51%)

Blue (51%)

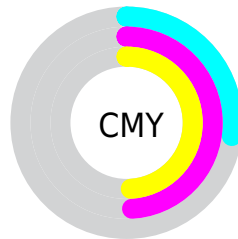


Cyan (0%)

Magenta (30%)

Yellow (30%)

Black (27%)



Cyan (27%)

Magenta (49%)

Yellow (49%)

Brightness & Saturation Gradients

These gradients show how the RYB color 186, 130, 130 changes by changing the brightness by 10 percent. The first figure shows a shift by +10% for each color and the second figure -10%.

Similar to the brightness gradients but the following saturation gradients show a change of the RYB color 186, 130, 130 by changing the saturation by 10% instead.

 186, 130, 130

255, 255, 255


 243, 183, 183

 255, 211, 210

 255, 240, 239

 186, 130, 130

 158, 105, 105

 131, 80, 81

 105, 57, 58

 80, 34, 36

 55, 12, 15


 35, 0, 1

 0, 0, 0

 186, 130, 130

 186, 111, 111

 186, 130, 130

 186, 149, 149

 186, 93, 93

 186, 167, 167

 186, 74, 74

 186, 186, 186

 186, 56, 56

 186, 195, 204

 186, 37, 37

 186, 205, 223

 186, 18, 18

 186, 214, 242

 186, 0, 0

 186, 221, 255

Harmonies

Analogous

The Analogous color harmony consists of three colors that are next to each other on the color wheel.



181, 130, 151



186, 130, 130



180, 144, 113

Triad

The Triadic color harmony groups three colors that are evenly spaced from another and form a triangle on the color wheel.



186, 130, 130



118, 153, 151



111, 136, 184

Complementary

The Complementary color scheme is a pair of colors which are on the opposite of each other on the color wheel.



186, 130, 130



130, 158, 186

Split Complementary

Split-complementary colors differ from the complementary color scheme. The scheme consists of three colors, the original color and two neighbors of the complement color.



88, 125, 176



186, 130, 130



98, 131, 155

Square

The Square scheme is like the rectangle color scheme, but the four colors are evenly spaced on the color wheel.



186, 130, 130



106, 148, 110



84, 121, 159



140, 141, 182

Rectangle

The Rectangle color scheme consists of four colors that form a rectangle on the color wheel.



186, 130, 130



166, 170, 106



84, 121, 159



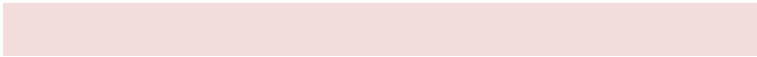
102, 132, 183

Sweetspot

The Sweet Spot groups the original color and five complimentary colors.



186, 130, 130



242, 220, 220



186, 130, 186



122, 109, 109



250, 250, 250



122, 122, 122

Same Dimension

The Same Dimension uses a secret algorithm to generate beautiful new colors.



186, 130, 130



242, 155, 155



186, 186, 130



92, 83, 83



156, 0, 0



28, 0, 0

Inverse Universe

The Inverse Universe completely reimagines the original color for something new.



130, 158, 186



155, 199, 242



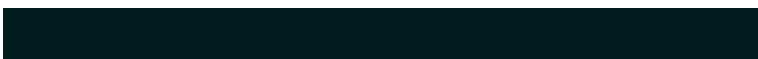
130, 149, 186



83, 88, 92



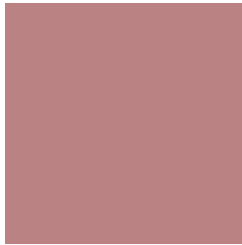
0, 78, 156



0, 14, 28

Previews

White Background



This preview shows how the RYB color 186, 130, 130 looks on a white background.

Color Contrast Check

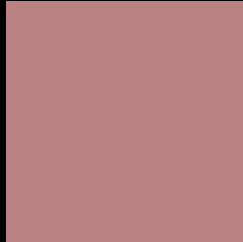
Large Text (above 18pt) WCAG AA ✓ Pass

Any Text WCAG AA ✗ Fail

Large Text (above 18pt) WCAG AAA ✗ Fail

Any Text WCAG AAA ✗ Fail

Black Background



This preview shows how the RYB color 186, 130, 130 looks on a black background.

Color Contrast Check

Large Text (above 18pt) WCAG AA ✓ Pass

Any Text WCAG AA ✓ Pass

Large Text (above 18pt) WCAG AAA ✓ Pass

Any Text WCAG AAA × Fail

If you want to check with other color combinations, try the [Color Contrast Checker](#).

RYB 186, 130, 130 Background



This preview shows how black text looks on a background with the RYB color 186, 130, 130.



This preview shows how white text looks on a background with the RYB color 186, 130, 130.

Color Blindness Simulation

Color vision deficiency is a very complex topic, and I could not describe the different causes any better than Wikipedia does, so if you want to learn more, you should check out their [article about color blindness](#).

Dichromacy





Tritanopia
187, 129, 138

Trichromacy



Original Color

186, 130, 130

Protanomaly

162, 140, 135

Deuteranomaly

173, 137, 129

Tritanomaly

187, 129, 135

Monochromacy



Original Color

186, 130, 130

Achromatopsia

147, 147, 147

Achromatomaly

161, 141, 141

CSS Examples

Text

The CSS property to change the color of the text to RYB 186, 130, 130 is called "color". The color property can be set on classes, ids or directly on the HTML element.

This example shows how text in the color `rgb(186, 130, 130)` looks like.

```
.text, #text, p{  
    color:rgb(186, 130, 130)  
}
```

If you want to add a text shadow in that color use the text-shadow property, you can generate a text shadow directly with our [CSS Text Shadow Generator](#).

Here you see how black text with a 4 pixel rgb(186, 130, 130) colored shadow looks like.

```
.shadow{ text-shadow: 4px 4px 2px rgb(186, 130, 130) }
```

Border

The CSS property to change the border of an element to RYB 186, 130, 130 is called "border". The border property can be set on classes, ids or directly on the HTML element.

This example shows the color as border, it can be applied via the CSS property "border" or "border-color".

```
.border, #border, table{ border:4px solid rgb(186, 130, 130) }
```

If only the border color should be changed use the property `border-color`.

```
.border{ border-color:rgb(186, 130, 130) }
```

If you want to add a box shadow in that color use:

Here you see how a box with a 4 pixel `rgb(186, 130, 130)` colored shadow looks like.

```
.boxshadow{ -moz-box-shadow:4px 4px 4px  
4px rgb(186, 130, 130); -webkit-box-  
shadow:4px 4px 4px 4px rgb(186, 130, 130);  
box-shadow:4px 4px 4px 4px rgb(186, 130,  
130) }
```

Background

The CSS property to change the background color of an element to RYB 186, 130, 130 is called "background". The background property can be set on classes, ids or directly on the HTML element.

```
.background, #background, body{  
background: rgb(186, 130, 130) }
```

If only the background color should be changed can be used:

```
.background{ background-color: rgb(186,  
130, 130) }
```

This example shows the color as background, it is applied via the CSS property "background".

To optimize and compress your CSS code, you can use our [online CSS compressor and optimizer](#) based on csstidy. If you want to create a linear or radial gradient as background or border, check our [CSS Gradient Generator](#).

Hey! You found this booklet interesting? Support Converting Colors with the new Membership Option!

The pro membership hides all ads, plus gives you double the colors in the color bucket, and more awesome pro features!

[Learn more, Memberships starting at \\$2.50/m!](#)

**Follow me
on Twitter!**

@ConvertingColor