

Converting Colors

`RYB(186, 135, 127)`

Have a look what the booklet for
RYB(186, 135, 127) contains.

RYB(186, 135, 127)	3
<i>Conversions</i>	4
<i>Details</i>	6
<i>Harmonies</i>	11
<i>Previews</i>	23
<i>Color Blindness Simulation</i>	26
<i>CSS Examples</i>	29

Color

R_YB(186, 135, 127)

Conversions

Conversions Part 1

Format	Color
Hex	BA867F
RGB	186, 134, 127
RGB Percent	73%, 53%, 50%
CMY	0.2706, 0.4743, 0.5020
CMYK	0.00, 0.28, 0.32, 0.27
HSL	7°, 30%, 61%
HSV	7°, 32%, 73%
XYZ	32.6118, 29.0340, 23.9640
YIQ	148.7500, 33.2390, 8.8470

Conversions

Conversions Part 2

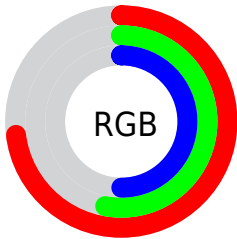
Format	Color
R_{YB}	186, 135, 127
Decimal	12224127
CIE _{Lab}	60.81, 18.95, 11.68
CIE _{LCh}	61, 22.264, 31.646
Yxy	29.0340, 0.3809, 0.3391
Android (android.graphics.Color)	4290414207 (0xFFBA867F)
YUV	148.7500, -10.7227, 32.6683
Hunter-Lab	53.8832, 13.7381, 11.3496

Details

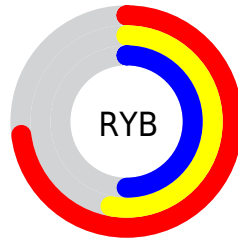
The RYB color **186, 135, 127** is a dark color, and the websafe version is hex **CC9999**. A complement of this color would be **127, 155, 186**, and the grayscale version is **149, 149, 149**.

A 20% lighter version of the original color is **243, 188, 180**, and **131, 85, 78** is the 20% darker color. If you saturate the color by 10%, you get **186, 119, 108**, and if you desaturate by 10%, it is **186, 150, 146**.

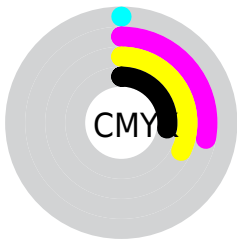
Distribution



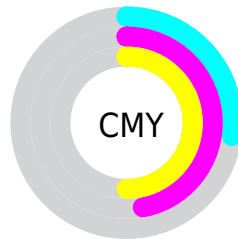
- Red (73%)
- Green (53%)
- Blue (50%)



- Red (73%)
- Yellow (53%)
- Blue (50%)



- Cyan (0%)
- Magenta (28%)
- Yellow (32%)
- Black (27%)



- Cyan (27%)
- Magenta (47%)
- Yellow (50%)

Brightness & Saturation Gradients

These gradients show how the RYB color 186, 135, 127 changes by changing the brightness by 10 percent. The first figure shows a shift by +10% for each color and the second figure -10%.

Similar to the brightness gradients but the following saturation gradients show a change of the RYB color 186, 135, 127 by changing the saturation by 10% instead.


 186, 135, 127


255, 255, 255


 243, 189, 180

 255, 217, 207

 255, 251, 235

 186, 135, 127

 158, 110, 102

 131, 85, 78

 105, 61, 55

 80, 38, 34


 55, 18, 12


 34, 0, 0

 0, 0, 0

 186, 135, 127

 186, 119, 108

 186, 135, 127

 186, 150, 146

■ 186, 102, 90

■ 186, 167, 164

■ 186, 87, 71

■ 186, 183, 183

■ 186, 71, 53

■ 186, 193, 201

■ 186, 54, 34

■ 186, 202, 220

■ 186, 39, 15

■ 186, 211, 239

■ 186, 25, 0

■ 186, 219, 255

■ 186, 221, 255

Harmonies

Analogous

The Analogous color harmony consists of three colors that are next to each other on the color wheel.



185, 132, 146



186, 135, 127



177, 157, 113

Triad

The Triadic color harmony groups three colors that are evenly spaced from another and form a triangle on the color wheel.



186, 135, 127



116, 147, 156



124, 141, 186

Complementary

The Complementary color scheme is a pair of colors which are on the opposite of each other on the color wheel.



186, 135, 127



127, 155, 186

Split Complementary

Split-complementary colors differ from the complementary color scheme. The scheme consists of three colors, the original color and two neighbors of the complement color.



100, 132, 181



186, 135, 127



97, 131, 158

Square

The Square scheme is like the rectangle color scheme, but the four colors are evenly spaced on the color wheel.



186, 135, 127



113, 152, 126



89, 125, 167



151, 141, 180

Rectangle

The Rectangle color scheme consists of four colors that form a rectangle on the color wheel.



186, 135, 127



143, 166, 108



89, 125, 167



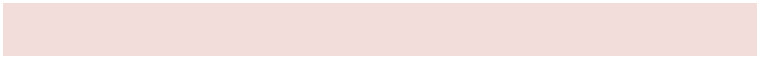
115, 138, 185

Sweetspot

The Sweet Spot groups the original color and five complimentary colors.



186, 135, 127



242, 221, 218



186, 127, 179



122, 109, 108



250, 250, 250



122, 122, 122

Same Dimension

The Same Dimension uses a secret algorithm to generate beautiful new colors.



186, 135, 127



242, 162, 150



165, 186, 127



92, 84, 83



156, 22, 0



28, 3, 0

Inverse Universe

The Inverse Universe completely reimagines the original color for something new.



127, 155, 186



150, 193, 242



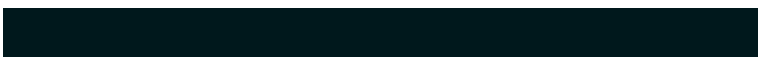
127, 144, 186



83, 87, 92



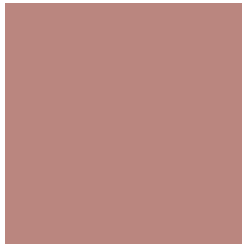
0, 73, 156



0, 13, 28

Previews

White Background



This preview shows how the RYB color 186, 135, 127 looks on a white background.

Color Contrast Check

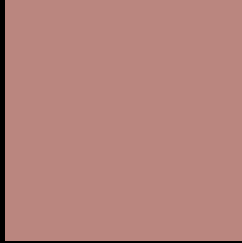
Large Text (above 18pt) WCAG AA ✓ Pass

Any Text WCAG AA × Fail

Large Text (above 18pt) WCAG AAA × Fail

Any Text WCAG AAA × Fail

Black Background



This preview shows how the RYB color 186, 135, 127 looks on a black background.

Color Contrast Check

Large Text (above 18pt) WCAG AA ✓ Pass

Any Text WCAG AA ✓ Pass

Large Text (above 18pt) WCAG AAA ✓ Pass

Any Text WCAG AAA × Fail

If you want to check with other color combinations, try the [Color Contrast Checker](#).

RYB 186, 135, 127 Background



This preview shows how black text looks on a background with the RYB color 186, 135, 127.



This preview shows how white text looks on a background with the RYB color 186, 135, 127.

Color Blindness Simulation

Color vision deficiency is a very complex topic, and I could not describe the different causes any better than Wikipedia does, so if you want to learn more, you should check out their [article about color blindness](#).


Dichromacy



Original Color
186, 135, 127

Protanopia
142, 153, 133

Deuteranopia
169, 149, 126



Tritanopia
188, 132, 142

Trichromacy



Original Color

186, 135, 127

Protanomaly

165, 147, 131

Deuteranomaly

175, 142, 126

Tritanomaly

187, 133, 137

Monochromacy



Original Color

186, 135, 127

Achromatopsia

149, 149, 149

Achromatomaly

162, 145, 141

CSS Examples

Text

The CSS property to change the color of the text to RYB 186, 135, 127 is called "color". The color property can be set on classes, ids or directly on the HTML element.

This example shows how text in the color rgb(186, 134, 127) looks like.

```
.text, #text, p{  
    color:rgb(186, 134, 127)  
}
```

If you want to add a text shadow in that color use the text-shadow property, you can generate a text shadow directly with our [CSS Text Shadow Generator](#).

Here you see how black text with a 4 pixel rgb(186, 134, 127) colored shadow looks like.

```
.shadow{ text-shadow: 4px 4px 2px rgb(186, 134, 127) }
```

Border

The CSS property to change the border of an element to RYB 186, 135, 127 is called "border". The border property can be set on classes, ids or directly on the HTML element.

This example shows the color as border, it can be applied via the CSS property "border" or "border-color".

```
.border, #border, table{ border:4px solid rgb(186, 134, 127) }
```

If only the border color should be changed use the property `border-color`.

```
.border{ border-color:rgb(186, 134, 127) }
```

If you want to add a box shadow in that color use:

Here you see how a box with a 4 pixel `rgb(186, 134, 127)` colored shadow looks like.

```
.boxshadow{ -moz-box-shadow:4px 4px 4px  
4px rgb(186, 134, 127); -webkit-box-  
shadow:4px 4px 4px 4px rgb(186, 134, 127);  
box-shadow:4px 4px 4px 4px rgb(186, 134,  
127) }
```

Background

The CSS property to change the background color of an element to RYB 186, 135, 127 is called "background". The background property can be set on classes, ids or directly on the HTML element.

```
.background, #background, body{  
background: rgb(186, 134, 127) }
```

If only the background color should be changed can be used:

```
.background{ background-color: rgb(186,  
134, 127) }
```

This example shows the color as background, it is applied via the CSS property "background".

To optimize and compress your CSS code, you can use our [online CSS compressor and optimizer](#) based on csstidy. If you want to create a linear or radial gradient as background or border, check our [CSS Gradient Generator](#).

Hey! You found this booklet interesting? Support Converting Colors with the new Membership Option!

The pro membership hides all ads, plus gives you double the colors in the color bucket, and more awesome pro features!

[Learn more, Memberships starting at \\$2.50/m!](#)

**Follow me
on Twitter!**

@ConvertingColor