

Converting Colors

`RYB(186, 149, 133)`

Have a look what the booklet for
RYB(186, 149, 133) contains.

RYB(186, 149, 133)	3
<i>Conversions</i>	4
<i>Details</i>	6
<i>Harmonies</i>	11
<i>Previews</i>	23
<i>Color Blindness Simulation</i>	26
<i>CSS Examples</i>	29

Color

R_YB(186, 149, 133)

Conversions

Conversions Part 1

Format	Color
Hex	BA9185
RGB	186, 145, 133
RGB Percent	73%, 57%, 52%
CMY	0.2706, 0.4302, 0.4784
CMYK	0.00, 0.22, 0.28, 0.27
HSL	14°, 28%, 63%
HSV	14°, 28%, 73%
XYZ	34.6531, 32.4721, 26.6316
YIQ	155.8910, 28.2880, 4.9600

Conversions

Conversions Part 2

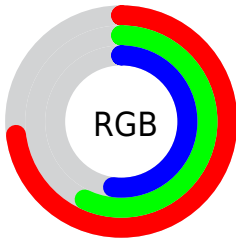
Format	Color
RYB	186, 149, 133
Decimal	12226949
CIELab	63.73, 13.53, 12.39
CIELCh	64, 18.343, 42.493
Yxy	32.4721, 0.3696, 0.3463
Android (android.graphics.Color)	4290417029 (0xFFBA9185)
YUV	155.8910, -11.2853, 26.4056
Hunter-Lab	56.9843, 8.8264, 12.1798

Details

The RYB color **186, 149, 133** is a light color, and the websafe version is hex **CC9999**. A complement of this color would be **133, 156, 186**, and the grayscale version is **156, 156, 156**.

A 20% lighter version of the original color is **243, 203, 186**, and **132, 97, 83** is the 20% darker color. If you saturate the color by 10%, you get **186, 136, 114**, and if you desaturate by 10%, it is **186, 162, 152**.

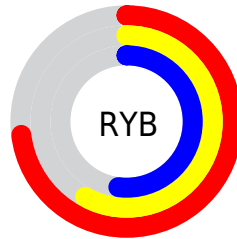
Distribution



Red (73%)

Green (57%)

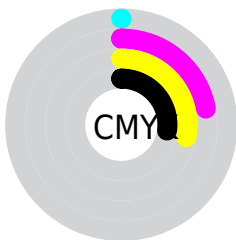
Blue (52%)



Red (73%)

Yellow (58%)

Blue (52%)

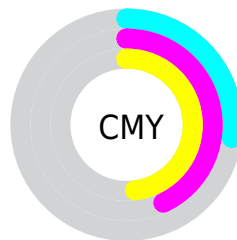


Cyan (0%)

Magenta (22%)

Yellow (28%)

Black (27%)



Cyan (27%)

Magenta (43%)

Yellow (48%)

Brightness & Saturation Gradients

These gradients show how the RYB color 186, 149, 133 changes by changing the brightness by 10 percent. The first figure shows a shift by +10% for each color and the second figure -10%.

Similar to the brightness gradients but the following saturation gradients show a change of the RYB color 186, 149, 133 by changing the saturation by 10% instead.

 186, 149, 133

255, 255, 255

 243, 203, 186

 255, 233, 214


 242, 255, 242

 186, 149, 133

 159, 124, 108

 132, 99, 83

 106, 74, 60

 81, 50, 39

 57, 30, 18

 35, 2, 0

 0, 0, 0

 186, 149, 133

 186, 136, 114

 186, 149, 133

 186, 162, 152

■ 186, 123, 96

■ 186, 175, 170

■ 186, 109, 77

■ 186, 187, 189

■ 186, 97, 59

■ 186, 195, 207

■ 186, 84, 40

■ 186, 203, 226

■ 186, 72, 21

■ 186, 212, 245

■ 186, 58, 3

■ 186, 218, 255

■ 186, 56, 0

■ 186, 221, 255

Harmonies

Analogous

The Analogous color harmony consists of three colors that are next to each other on the color wheel.



188, 143, 148



186, 149, 133



176, 176, 124

Triad

The Triadic color harmony groups three colors that are evenly spaced from another and form a triangle on the color wheel.



186, 149, 133



124, 150, 163



145, 152, 186

Complementary

The Complementary color scheme is a pair of colors which are on the opposite of each other on the color wheel.



186, 149, 133



133, 156, 186

Split Complementary

Split-complementary colors differ from the complementary color scheme. The scheme consists of three colors, the original color and two neighbors of the complement color.



124, 146, 185



186, 149, 133



112, 139, 164

Square

The Square scheme is like the rectangle color scheme, but the four colors are evenly spaced on the color wheel.



186, 149, 133



130, 160, 149



111, 140, 176



166, 148, 179

Rectangle

The Rectangle color scheme consists of four colors that form a rectangle on the color wheel.



186, 149, 133



139, 166, 122



111, 140, 176



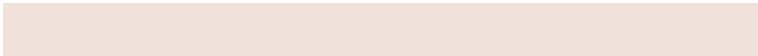
137, 150, 187

Sweetspot

The Sweet Spot groups the original color and five complimentary colors.



186, 149, 133



242, 228, 220



186, 133, 175



122, 113, 109



250, 250, 250



122, 122, 122

Same Dimension

The Same Dimension uses a secret algorithm to generate beautiful new colors.



186, 149, 133



242, 185, 160



154, 186, 133



92, 86, 83



156, 47, 0



28, 9, 0

Inverse Universe

The Inverse Universe completely reimagines the original color for something new.



133, 156, 186



160, 196, 242



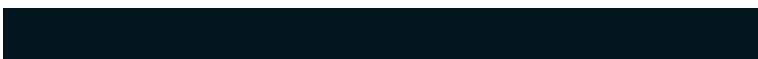
133, 145, 186



83, 87, 92



0, 68, 156



0, 12, 28

Previews

White Background



This preview shows how the RYB color 186, 149, 133 looks on a white background.

Color Contrast Check

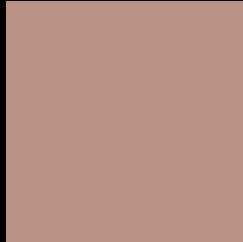
Large Text (above 18pt) WCAG AA × Fail

Any Text WCAG AA × Fail

Large Text (above 18pt) WCAG AAA × Fail

Any Text WCAG AAA × Fail

Black Background



This preview shows how the RYB color 186, 149, 133 looks on a black background.

Color Contrast Check

Large Text (above 18pt) WCAG AA ✓ Pass

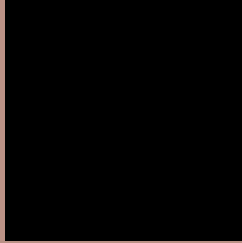
Any Text WCAG AA ✓ Pass

Large Text (above 18pt) WCAG AAA ✓ Pass

Any Text WCAG AAA ✓ Pass

If you want to check with other color combinations, try the [Color Contrast Checker](#).

RYB 186, 149, 133 Background



This preview shows how black text looks on a background with the RYB color 186, 149, 133.



This preview shows how white text looks on a background with the RYB color 186, 149, 133.

Color Blindness Simulation

Color vision deficiency is a very complex topic, and I could not describe the different causes any better than Wikipedia does, so if you want to learn more, you should check out their [article about color blindness](#).

Dichromacy



Original Color
186, 149, 133

Protanopia
148, 161, 138

Deuteranopia
177, 159, 132



Tritanopia
188, 142, 153

Trichromacy



Original Color

186, 149, 133

Protanomaly

170, 163, 136

Deuteranomaly

180, 156, 132

Tritanomaly

187, 143, 146

Monochromacy



Original Color

186, 149, 133

Achromatopsia

156, 156, 156

Achromatomaly

167, 153, 148

CSS Examples

Text

The CSS property to change the color of the text to RYB 186, 149, 133 is called "color". The color property can be set on classes, ids or directly on the HTML element.

This example shows how text in the color `rgb(186, 145, 133)` looks like.

```
.text, #text, p{  
    color:rgb(186, 145, 133)  
}
```

If you want to add a text shadow in that color use the text-shadow property, you can generate a text shadow directly with our [CSS Text Shadow Generator](#).

Here you see how black text with a 4 pixel rgb(186, 145, 133) colored shadow looks like.

```
.shadow{ text-shadow: 4px 4px 2px rgb(186, 145, 133) }
```

Border

The CSS property to change the border of an element to RYB 186, 149, 133 is called "border". The border property can be set on classes, ids or directly on the HTML element.

This example shows the color as border, it can be applied via the CSS property "border" or "border-color".

```
.border, #border, table{ border:4px solid rgb(186, 145, 133) }
```

If only the border color should be changed use the property `border-color`.

```
.border{ border-color:rgb(186, 145, 133) }
```

If you want to add a box shadow in that color use:

Here you see how a box with a 4 pixel `rgb(186, 145, 133)` colored shadow looks like.

```
.boxshadow{ -moz-box-shadow:4px 4px 4px  
4px rgb(186, 145, 133); -webkit-box-  
shadow:4px 4px 4px 4px rgb(186, 145, 133);  
box-shadow:4px 4px 4px 4px rgb(186, 145,  
133) }
```

Background

The CSS property to change the background color of an element to RYB 186, 149, 133 is called "background". The background property can be set on classes, ids or directly on the HTML element.

```
.background, #background, body{  
background: rgb(186, 145, 133) }
```

If only the background color should be changed can be used:

```
.background{ background-color: rgb(186,  
145, 133) }
```

This example shows the color as background, it is applied via the CSS property "background".

To optimize and compress your CSS code, you can use our [online CSS compressor and optimizer](#) based on csstidy. If you want to create a linear or radial gradient as background or border, check our [CSS Gradient Generator](#).

Hey! You found this booklet interesting? Support Converting Colors with the new Membership Option!

The pro membership hides all ads, plus gives you double the colors in the color bucket, and more awesome pro features!

[Learn more, Memberships starting at \\$2.50/m!](#)

**Follow me
on Twitter!**

@ConvertingColor