

Converting Colors

`RYB(186, 163, 169)`

Have a look what the booklet for
RYB(186, 163, 169) contains.

RYB(186, 163, 169)	3
<i>Conversions</i>	4
<i>Details</i>	6
<i>Harmonies</i>	11
<i>Previews</i>	23
<i>Color Blindness Simulation</i>	26
<i>CSS Examples</i>	29

Color

$\text{RYB}(186, 163, 169)$

Conversions

Conversions Part 1

Format	Color
Hex	BAA3A9
RGB	186, 163, 169
RGB Percent	73%, 64%, 66%
CMY	0.2706, 0.3608, 0.3373
CMYK	0.00, 0.12, 0.09, 0.27
HSL	344°, 14%, 68%
HSV	344°, 12%, 73%
XYZ	40.5083, 39.4981, 43.0250
YIQ	170.5610, 11.7820, 6.7420

Conversions

Conversions Part 2

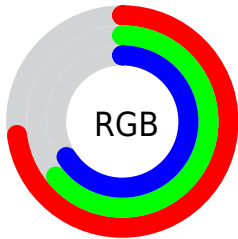
Format	Color
R_{YB}	186, 163, 169
Decimal	12231593
CIE Lab	69.11, 9.42, -0.02
CIE LCh	69, 9.419, 359.873
Yxy	39.4981, 0.3293, 0.3210
Android (android.graphics.Color)	4290421673 (0xFFBAA3A9)
YUV	170.5610, -0.7696, 13.5400
Hunter-Lab	62.8475, 5.0690, 3.4037

Details

The RYB color **186, 163, 169** is a light color, and the websafe version is hex **999999**. A complement of this color would be **163, 176, 186**, and the grayscale version is **171, 171, 171**.

A 20% lighter version of the original color is **242, 218, 224**, and **133, 111, 117** is the 20% darker color. If you saturate the color by 10%, you get **186, 144, 155**, and if you desaturate by 10%, it is **186, 182, 183**.

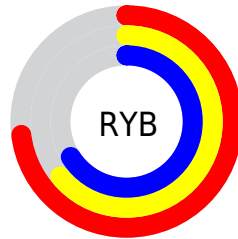
Distribution



Red (73%)

Green (64%)

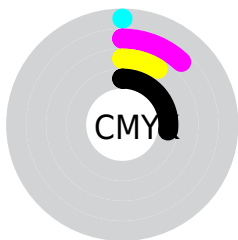
Blue (66%)



Red (73%)

Yellow (64%)

Blue (66%)

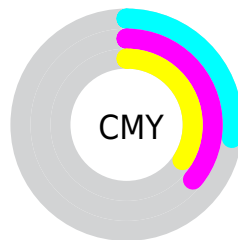


Cyan (0%)

Magenta (12%)

Yellow (9%)

Black (27%)



Cyan (27%)

Magenta (36%)

Yellow (34%)

Brightness & Saturation Gradients

These gradients show how the RYB color 186, 163, 169 changes by changing the brightness by 10 percent. The first figure shows a shift by +10% for each color and the second figure -10%.


Similar to the brightness gradients but the following saturation gradients show a change of the RYB color 186, 163, 169 by changing the saturation by 10% instead.

 186, 163, 169

255, 255, 255

 242, 218, 224

 255, 246, 253

 186, 163, 169

 159, 137, 143

 133, 111, 117

 107, 87, 92

 83, 64, 69

 60, 42, 47

 38, 21, 26

 14, 0, 0


 0, 0, 0

 186, 163, 169

 186, 163, 169

 186, 144, 155

 186, 182, 183

 186, 126, 142

 186, 194, 200

 186, 107, 128

 186, 205, 219

 186, 89, 114

 186, 215, 237

 186, 70, 100

 186, 225, 255

 186, 51, 87

 186, 222, 255

 186, 33, 73

 186, 221, 255

 186, 14, 59

 186, 0, 49

Harmonies

Analogous

The Analogous color harmony consists of three colors that are next to each other on the color wheel.



180, 164, 177



186, 163, 169



187, 163, 161

Triad

The Triadic color harmony groups three colors that are evenly spaced from another and form a triangle on the color wheel.



186, 163, 169



154, 171, 159



151, 164, 183

Complementary

The Complementary color scheme is a pair of colors which are on the opposite of each other on the color wheel.



186, 163, 169



163, 176, 186

Split Complementary

Split-complementary colors differ from the complementary color scheme. The scheme consists of three colors, the original color and two neighbors of the complement color.



148, 161, 177



186, 163, 169



157, 170, 173

Square

The Square scheme is like the rectangle color scheme, but the four colors are evenly spaced on the color wheel.



186, 163, 169



164, 176, 152



150, 164, 174



160, 167, 186

Rectangle

The Rectangle color scheme consists of four colors that form a rectangle on the color wheel.



186, 163, 169



185, 169, 156



150, 164, 174



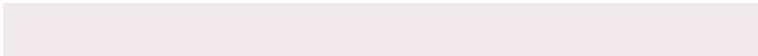
149, 163, 181

Sweetspot

The Sweet Spot groups the original color and five complimentary colors.



186, 163, 169



242, 233, 235



180, 163, 186



122, 116, 118



250, 250, 250



122, 122, 122

Same Dimension

The Same Dimension uses a secret algorithm to generate beautiful new colors.



186, 163, 169



242, 206, 215



186, 169, 163



92, 83, 85



156, 0, 41



28, 0, 7

Inverse Universe

The Inverse Universe completely reimagines the original color for something new.



186, 163, 169



242, 206, 215



163, 173, 186



92, 83, 85



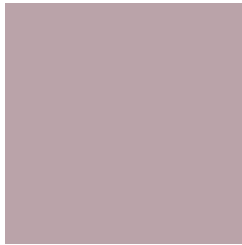
156, 0, 41



28, 0, 7

Previews

White Background



This preview shows how the RYB color 186, 163, 169 looks on a white background.

Color Contrast Check

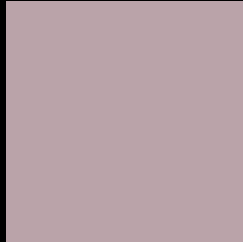
Large Text (above 18pt) WCAG AA × Fail

Any Text WCAG AA × Fail

Large Text (above 18pt) WCAG AAA × Fail

Any Text WCAG AAA × Fail

Black Background



This preview shows how the RYB color 186, 163, 169 looks on a black background.

Color Contrast Check

Large Text (above 18pt) WCAG AA ✓ Pass

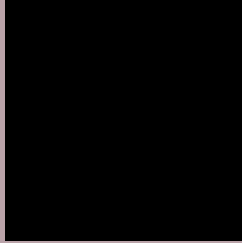
Any Text WCAG AA ✓ Pass

Large Text (above 18pt) WCAG AAA ✓ Pass

Any Text WCAG AAA ✓ Pass

If you want to check with other color combinations, try the [Color Contrast Checker](#).

RYB 186, 163, 169 Background



This preview shows how black text looks on a background with the RYB color 186, 163, 169.



This preview shows how white text looks on a background with the RYB color 186, 163, 169.

Color Blindness Simulation

Color vision deficiency is a very complex topic, and I could not describe the different causes any better than Wikipedia does, so if you want to learn more, you should check out their [article about color blindness](#).

Dichromacy



Original Color

186, 163, 169

Protanopia

171, 168, 172

Deuteranopia

185, 163, 169



Tritanopia
187, 162, 175

Trichromacy



Original Color

186, 163, 169

Protanomaly

176, 166, 171

Deuteranomaly

185, 163, 169

Tritanomaly

187, 162, 173

Monochromacy



Original Color

186, 163, 169

Achromatopsia

171, 171, 171

Achromatomaly

176, 168, 170

CSS Examples

Text

The CSS property to change the color of the text to RYB 186, 163, 169 is called "color". The color property can be set on classes, ids or directly on the HTML element.

This example shows how text in the color rgb(186, 163, 169) looks like.

```
.text, #text, p{  
    color:rgb(186, 163, 169)  
}
```

If you want to add a text shadow in that color use the text-shadow property, you can generate a text shadow directly with our [CSS Text Shadow Generator](#).

Here you see how black text with a 4 pixel rgb(186, 163, 169) colored shadow looks like.

```
.shadow{ text-shadow: 4px 4px 2px rgb(186, 163, 169) }
```

Border

The CSS property to change the border of an element to RYB 186, 163, 169 is called "border". The border property can be set on classes, ids or directly on the HTML element.

This example shows the color as border, it can be applied via the CSS property "border" or "border-color".

```
.border, #border, table{ border:4px solid rgb(186, 163, 169) }
```

If only the border color should be changed use the property `border-color`.

```
.border{ border-color:rgb(186, 163, 169) }
```

If you want to add a box shadow in that color use:

Here you see how a box with a 4 pixel `rgb(186, 163, 169)` colored shadow looks like.

```
.boxshadow{ -moz-box-shadow:4px 4px 4px  
4px rgb(186, 163, 169); -webkit-box-  
shadow:4px 4px 4px 4px rgb(186, 163, 169);  
box-shadow:4px 4px 4px 4px rgb(186, 163,  
169) }
```

Background

The CSS property to change the background color of an element to RYB 186, 163, 169 is called "background". The background property can be set on classes, ids or directly on the HTML element.

```
.background, #background, body{  
background: rgb(186, 163, 169) }
```

If only the background color should be changed can be used:

```
.background{ background-color: rgb(186,  
163, 169) }
```

This example shows the color as background, it is applied via the CSS property "background".

To optimize and compress your CSS code, you can use our [online CSS compressor and optimizer](#) based on csstidy. If you want to create a linear or radial gradient as background or border, check our [CSS Gradient Generator](#).

Hey! You found this booklet interesting? Support Converting Colors with the new Membership Option!

The pro membership hides all ads, plus gives you double the colors in the color bucket, and more awesome pro features!

[Learn more, Memberships starting at \\$2.50/m!](#)

**Follow me
on Twitter!**

@ConvertingColor