

Converting Colors

`RYB(187, 125, 125)`

Have a look what the booklet for
RYB(187, 125, 125) contains.

RYB(187, 125, 125)	3
<i>Conversions</i>	4
<i>Details</i>	6
<i>Harmonies</i>	11
<i>Previews</i>	23
<i>Color Blindness Simulation</i>	26
<i>CSS Examples</i>	29

Color

R_YB(187, 125, 125)

Conversions

Conversions Part 1

Format	Color
Hex	BB7D7D
RGB	187, 125, 125
RGB Percent	73%, 49%, 49%
CMY	0.2667, 0.5098, 0.5098
CMYK	0.00, 0.33, 0.33, 0.27
HSL	0°, 31%, 61%
HSV	0°, 33%, 73%
XYZ	31.5288, 26.7127, 22.8964
YIQ	143.5380, 36.9520, 13.1440

Conversions

Conversions Part 2

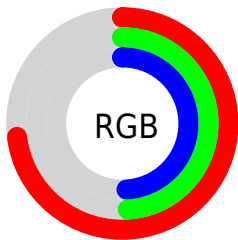
Format	Color
R_{YB}	187, 125, 125
Decimal	12287357
CIE _{Lab}	58.71, 24.10, 9.87
CIE _{LCh}	59, 26.049, 22.275
Yxy	26.7127, 0.3886, 0.3292
Android (android.graphics.Color)	4290477437 (0xFFBB7D7D)
YUV	143.5380, -9.1392, 38.1162
Hunter-Lab	51.6843, 18.4421, 9.9133

Details

The RYB color **187, 125, 125** is a dark color, and the websafe version is hex **CC9999**. A complement of this color would be **125, 156, 187**, and the grayscale version is **144, 144, 144**.

A 20% lighter version of the original color is **245, 178, 178**, and **132, 75, 76** is the 20% darker color. If you saturate the color by 10%, you get **187, 106, 106**, and if you desaturate by 10%, it is **187, 144, 144**.

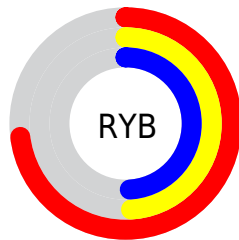
Distribution



Red (73%)

Green (49%)

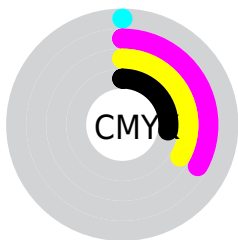
Blue (49%)



Red (73%)

Yellow (49%)

Blue (49%)

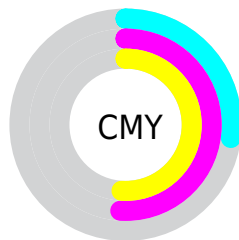


Cyan (0%)

Magenta (33%)

Yellow (33%)

Black (27%)



Cyan (27%)

Magenta (51%)

Yellow (51%)

Brightness & Saturation Gradients

These gradients show how the RYB color 187, 125, 125 changes by changing the brightness by 10 percent. The first figure shows a shift by +10% for each color and the second figure -10%.

Similar to the brightness gradients but the following saturation gradients show a change of the RYB color 187, 125, 125 by changing the saturation by 10% instead.

 187, 125, 125


255, 255, 255

 245, 178, 178

 255, 206, 205

 255, 234, 233

 187, 125, 125

 159, 100, 100

 132, 75, 76

 105, 52, 54


 80, 29, 32


 55, 6, 9


 32, 0, 1

 0, 0, 0

 187, 125, 125

 187, 106, 106

 187, 125, 125

 187, 144, 144


 187, 88, 88

 187, 162, 162

 187, 69, 69

 187, 181, 181

 187, 50, 50

 187, 194, 200

 187, 31, 31

 187, 203, 219

 187, 13, 13

 187, 212, 237

 187, 0, 0

 187, 221, 255

Harmonies

Analogous

The Analogous color harmony consists of three colors that are next to each other on the color wheel.



182, 125, 148



187, 125, 125



180, 142, 106

Triad

The Triadic color harmony groups three colors that are evenly spaced from another and form a triangle on the color wheel.



187, 125, 125



113, 151, 151



103, 131, 186

Complementary

The Complementary color scheme is a pair of colors which are on the opposite of each other on the color wheel.



187, 125, 125



125, 156, 187

Split Complementary

Split-complementary colors differ from the complementary color scheme. The scheme consists of three colors, the original color and two neighbors of the complement color.



75, 119, 177



187, 125, 125



87, 126, 153

Square

The Square scheme is like the rectangle color scheme, but the four colors are evenly spaced on the color wheel.



187, 125, 125



99, 145, 104



69, 112, 158



136, 137, 183

Rectangle

The Rectangle color scheme consists of four colors that form a rectangle on the color wheel.



187, 125, 125



163, 169, 98



69, 112, 158



92, 126, 184

Sweetspot

The Sweet Spot groups the original color and five complimentary colors.



187, 125, 125



242, 218, 218



187, 125, 187



122, 108, 108



250, 250, 250



122, 122, 122

Same Dimension

The Same Dimension uses a secret algorithm to generate beautiful new colors.



187, 125, 125



242, 145, 145



187, 187, 125



94, 85, 85



158, 0, 0



31, 0, 0

Inverse Universe

The Inverse Universe completely reimagines the original color for something new.



125, 156, 187



145, 194, 242



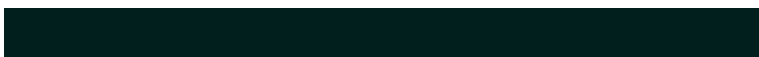
125, 146, 187



85, 90, 94



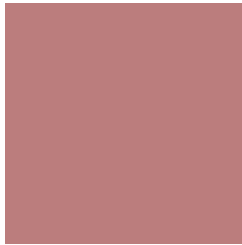
0, 79, 158



0, 16, 31

Previews

White Background



This preview shows how the RYB color 187, 125, 125 looks on a white background.

Color Contrast Check

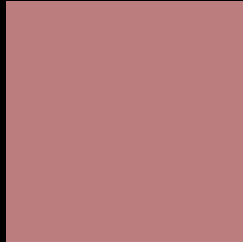
Large Text (above 18pt) WCAG AA ✓ Pass

Any Text WCAG AA × Fail

Large Text (above 18pt) WCAG AAA × Fail

Any Text WCAG AAA × Fail

Black Background



This preview shows how the RYB color 187, 125, 125 looks on a black background.

Color Contrast Check

Large Text (above 18pt) WCAG AA ✓ Pass

Any Text WCAG AA ✓ Pass

Large Text (above 18pt) WCAG AAA ✓ Pass

Any Text WCAG AAA × Fail

If you want to check with other color combinations, try the [Color Contrast Checker](#).

RYB 187, 125, 125 Background



This preview shows how black text looks on a background with the RYB color 187, 125, 125.



This preview shows how white text looks on a background with the RYB color 187, 125, 125.

Color Blindness Simulation

Color vision deficiency is a very complex topic, and I could not describe the different causes any better than Wikipedia does, so if you want to learn more, you should check out their [article about color blindness](#).


Dichromacy



Original Color
187, 125, 125

Protanopia
141, 146, 133

Deuteranopia
162, 143, 123



Tritanopia
188, 124, 133

Trichromacy



Original Color

187, 125, 125

Protanomaly

161, 136, 130

Deuteranomaly

171, 134, 124

Tritanomaly

188, 124, 130

Monochromacy



Original Color

187, 125, 125

Achromatopsia

144, 144, 144

Achromatomaly

160, 137, 137

CSS Examples

Text

The CSS property to change the color of the text to RYB 187, 125, 125 is called "color". The color property can be set on classes, ids or directly on the HTML element.

This example shows how text in the color `rgb(187, 125, 125)` looks like.

```
.text, #text, p{  
    color:rgb(187, 125, 125)  
}
```

If you want to add a text shadow in that color use the text-shadow property, you can generate a text shadow directly with our [CSS Text Shadow Generator](#).

Here you see how black text with a 4 pixel rgb(187, 125, 125) colored shadow looks like.

```
.shadow{ text-shadow: 4px 4px 2px rgb(187, 125, 125) }
```

Border

The CSS property to change the border of an element to RYB 187, 125, 125 is called "border". The border property can be set on classes, ids or directly on the HTML element.

This example shows the color as border, it can be applied via the CSS property "border" or "border-color".

```
.border, #border, table{ border:4px solid rgb(187, 125, 125) }
```

If only the border color should be changed use the property `border-color`.

```
.border{ border-color:rgb(187, 125, 125) }
```

If you want to add a box shadow in that color use:

Here you see how a box with a 4 pixel `rgb(187, 125, 125)` colored shadow looks like.

```
.boxshadow{ -moz-box-shadow:4px 4px 4px  
4px rgb(187, 125, 125); -webkit-box-  
shadow:4px 4px 4px 4px rgb(187, 125, 125);  
box-shadow:4px 4px 4px 4px rgb(187, 125,  
125) }
```

Background

The CSS property to change the background color of an element to RYB 187, 125, 125 is called "background". The background property can be set on classes, ids or directly on the HTML element.

```
.background, #background, body{  
background: rgb(187, 125, 125) }
```

If only the background color should be changed can be used:

```
.background{ background-color: rgb(187,  
125, 125) }
```

This example shows the color as background, it is applied via the CSS property "background".

To optimize and compress your CSS code, you can use our [online CSS compressor and optimizer](#) based on csstidy. If you want to create a linear or radial gradient as background or border, check our [CSS Gradient Generator](#).

Hey! You found this booklet interesting? Support Converting Colors with the new Membership Option!

The pro membership hides all ads, plus gives you double the colors in the color bucket, and more awesome pro features!

[Learn more, Memberships starting at \\$2.50/m!](#)

**Follow me
on Twitter!**

@ConvertingColor