

Converting Colors

`RYB(187, 167, 133)`

Have a look what the booklet for
RYB(187, 167, 133) contains.

RYB(187, 167, 133)	3
<i>Conversions</i>	4
<i>Details</i>	6
<i>Harmonies</i>	11
<i>Previews</i>	23
<i>Color Blindness Simulation</i>	26
<i>CSS Examples</i>	29

Color

RYB(187, 167, 133)

Conversions

Conversions Part 1

Format	Color
Hex	BB9A85
RGB	187, 154, 133
RGB Percent	73%, 60%, 52%
CMY	0.2667, 0.3966, 0.4784
CMYK	0.00, 0.18, 0.29, 0.27
HSL	23°, 28%, 63%
HSV	23°, 29%, 73%
XYZ	36.2603, 35.3245, 27.0975
YIQ	161.4730, 26.4090, 0.4650

Conversions

Conversions Part 2

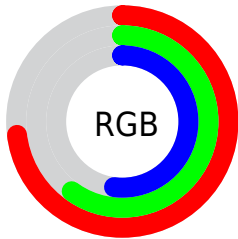
Format	Color
RYB	187, 167, 133
Decimal	12294789
CIELab	66.00, 9.18, 15.58
CIELCh	66, 18.084, 59.483
Yxy	35.3245, 0.3674, 0.3580
Android (android.graphics.Color)	4290484869 (0xFFBB9A85)
YUV	161.4730, -14.0372, 22.3872
Hunter-Lab	59.4344, 4.8907, 14.5724

Details

The RYB color **187, 167, 133** is a light color, and the websafe version is hex **CC9999**. A complement of this color would be **133, 153, 187**, and the grayscale version is **162, 162, 162**.

A 20% lighter version of the original color is **244, 221, 186**, and **133, 116, 83** is the 20% darker color. If you saturate the color by 10%, you get **187, 159, 114**, and if you desaturate by 10%, it is **187, 173, 152**.

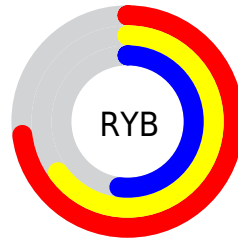
Distribution



Red (73%)

Green (60%)

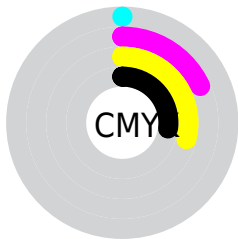
Blue (52%)



Red (73%)

Yellow (65%)

Blue (52%)

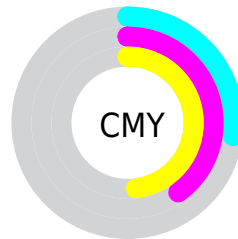


Cyan (0%)

Magenta (18%)

Yellow (29%)

Black (27%)



Cyan (27%)

Magenta (40%)

Yellow (48%)

Brightness & Saturation Gradients

These gradients show how the RYB color 187, 167, 133 changes by changing the brightness by 10 percent. The first figure shows a shift by +10% for each color and the second figure -10%.

Similar to the brightness gradients but the following saturation gradients show a change of the RYB color 187, 167, 133 by changing the saturation by 10% instead.


 187, 167, 133

255, 255, 255

 244, 221, 186

 246, 255, 214

 242, 255, 242

 187, 167, 133

 160, 141, 108

 133, 116, 83

 107, 92, 60

 82, 68, 38

 58, 45, 18

 36, 20, 0


 0, 0, 0

 187, 167, 133

 187, 159, 114

 187, 167, 133

 187, 173, 152

 187, 153, 96

 187, 182, 170

 187, 145, 77

 187, 188, 189

 187, 140, 58

 187, 195, 208

 187, 130, 40

 187, 202, 227

 187, 125, 21

 187, 209, 245

 187, 120, 2

 187, 215, 255

 187, 117, 0

 187, 219, 255

 187, 221, 255

Harmonies

Analogous

The Analogous color harmony consists of three colors that are next to each other on the color wheel.



194, 151, 145



187, 167, 133



148, 173, 128

Triad

The Triadic color harmony groups three colors that are evenly spaced from another and form a triangle on the color wheel.



187, 167, 133



122, 149, 170



163, 156, 189

Complementary

The Complementary color scheme is a pair of colors which are on the opposite of each other on the color wheel.



187, 167, 133



133, 153, 187

Split Complementary

Split-complementary colors differ from the complementary color scheme. The scheme consists of three colors, the original color and two neighbors of the complement color.



141, 156, 192



187, 167, 133



116, 144, 176

Square

The Square scheme is like the rectangle color scheme, but the four colors are evenly spaced on the color wheel.



187, 167, 133



137, 163, 168



124, 149, 188



181, 151, 177

Rectangle

The Rectangle color scheme consists of four colors that form a rectangle on the color wheel.



187, 167, 133



130, 163, 131



124, 149, 188



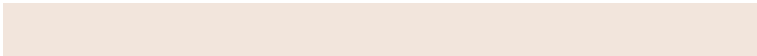
156, 158, 191

Sweetspot

The Sweet Spot groups the original color and five complimentary colors.



187, 167, 133



242, 235, 220



187, 133, 166



122, 117, 109



250, 250, 250



122, 122, 122

Same Dimension

The Same Dimension uses a secret algorithm to generate beautiful new colors.



187, 167, 133



242, 211, 157



140, 187, 133



94, 92, 85



158, 99, 0



31, 20, 0

Inverse Universe

The Inverse Universe completely reimagines the original color for something new.



133, 153, 187



157, 189, 242



133, 138, 187



85, 89, 94



0, 60, 158



0, 12, 31

Previews

White Background



This preview shows how the RYB color 187, 167, 133 looks on a white background.

Color Contrast Check

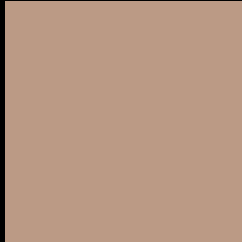
Large Text (above 18pt) WCAG AA × Fail

Any Text WCAG AA × Fail

Large Text (above 18pt) WCAG AAA × Fail

Any Text WCAG AAA × Fail

Black Background



This preview shows how the RYB color 187, 167, 133 looks on a black background.

Color Contrast Check

Large Text (above 18pt) WCAG AA ✓ Pass

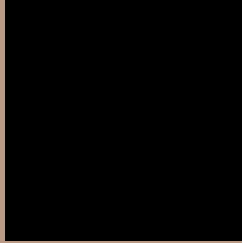
Any Text WCAG AA ✓ Pass

Large Text (above 18pt) WCAG AAA ✓ Pass

Any Text WCAG AAA ✓ Pass

If you want to check with other color combinations, try the [Color Contrast Checker](#).

R Y B 187, 167, 133 Background



This preview shows how black text looks on a background with the RYB color 187, 167, 133.



This preview shows how white text looks on a background with the RYB color 187, 167, 133.

Color Blindness Simulation

Color vision deficiency is a very complex topic, and I could not describe the different causes any better than Wikipedia does, so if you want to learn more, you should check out their [article about color blindness](#).

Dichromacy



Original Color
187, 167, 133

Protanopia
148, 169, 136

Deuteranopia
186, 168, 133



Tritanopia
190, 150, 161

Trichromacy



Original Color
187, 167, 133

Protanomaly
167, 176, 135

Deuteranomaly
186, 168, 133

Tritanomaly
189, 151, 151

Monochromacy



Original Color
187, 167, 133

Achromatopsia
161, 161, 161

Achromatomaly
170, 162, 151

CSS Examples

Text

The CSS property to change the color of the text to RYB 187, 167, 133 is called "color". The color property can be set on classes, ids or directly on the HTML element.

This example shows how text in the color `rgb(187, 154, 133)` looks like.

```
.text, #text, p{  
    color:rgb(187, 154, 133)  
}
```

If you want to add a text shadow in that color use the text-shadow property, you can generate a text shadow directly with our [CSS Text Shadow Generator](#).

Here you see how black text with a 4 pixel rgb(187, 154, 133) colored shadow looks like.

```
.shadow{ text-shadow: 4px 4px 2px rgb(187, 154, 133) }
```

Border

The CSS property to change the border of an element to RYB 187, 167, 133 is called "border". The border property can be set on classes, ids or directly on the HTML element.

This example shows the color as border, it can be applied via the CSS property "border" or "border-color".

```
.border, #border, table{ border:4px solid rgb(187, 154, 133) }
```

If only the border color should be changed use the property `border-color`.

```
.border{ border-color:rgb(187, 154, 133) }
```

If you want to add a box shadow in that color use:

Here you see how a box with a 4 pixel `rgb(187, 154, 133)` colored shadow looks like.

```
.boxshadow{ -moz-box-shadow:4px 4px 4px  
4px rgb(187, 154, 133); -webkit-box-  
shadow:4px 4px 4px 4px rgb(187, 154, 133);  
box-shadow:4px 4px 4px 4px rgb(187, 154,  
133) }
```

Background

The CSS property to change the background color of an element to RYB 187, 167, 133 is called "background". The background property can be set on classes, ids or directly on the HTML element.

```
.background, #background, body{  
background: rgb(187, 154, 133) }
```

If only the background color should be changed can be used:

```
.background{ background-color: rgb(187,  
154, 133) }
```

This example shows the color as background, it is applied via the CSS property "background".

To optimize and compress your CSS code, you can use our [online CSS compressor and optimizer](#) based on csstidy. If you want to create a linear or radial gradient as background or border, check our [CSS Gradient Generator](#).

Hey! You found this booklet interesting? Support Converting Colors with the new Membership Option!

The pro membership hides all ads, plus gives you double the colors in the color bucket, and more awesome pro features!

[Learn more, Memberships starting at \\$2.50/m!](#)

**Follow me
on Twitter!**

@ConvertingColor