

Converting Colors

`RYB(188, 131, 127)`

Have a look what the booklet for
RYB(188, 131, 127) contains.

RYB(188, 131, 127)	3
<i>Conversions</i>	4
<i>Details</i>	6
<i>Harmonies</i>	11
<i>Previews</i>	23
<i>Color Blindness Simulation</i>	26
<i>CSS Examples</i>	29

Color

R_YB(188, 131, 127)

Conversions

Conversions Part 1

Format	Color
Hex	BC837F
RGB	188, 131, 127
RGB Percent	74%, 51%, 50%
CMY	0.2627, 0.4872, 0.5020
CMYK	0.00, 0.30, 0.32, 0.26
HSL	4°, 31%, 62%
HSV	4°, 32%, 74%
XYZ	32.6531, 28.3902, 23.8375
YIQ	147.5870, 35.2560, 10.8400

Conversions

Conversions Part 2

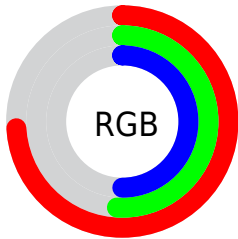
Format	Color
R_{YB}	188, 131, 127
Decimal	12354431
CIE _{Lab}	60.24, 21.57, 10.91
CIE _{LCh}	60, 24.168, 26.829
Yxy	28.3902, 0.3847, 0.3345
Android (android.graphics.Color)	4290544511 (0xFFBC837F)
YUV	147.5870, -10.1494, 35.4422
Hunter-Lab	53.2825, 16.1457, 10.7726

Details

The RYB color **188, 131, 127** is a dark color, and the websafe version is hex **CC9999**. A complement of this color would be **127, 156, 188**, and the grayscale version is **148, 148, 148**.

A 20% lighter version of the original color is **245, 184, 180**, and **133, 81, 78** is the 20% darker color. If you saturate the color by 10%, you get **188, 113, 108**, and if you desaturate by 10%, it is **188, 148, 146**.

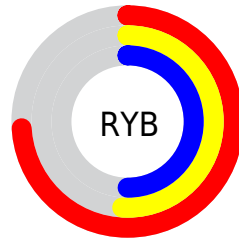
Distribution



Red (74%)

Green (51%)

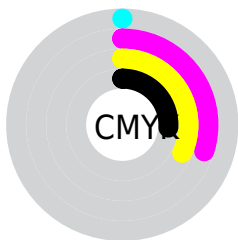
Blue (50%)



Red (74%)

Yellow (51%)

Blue (50%)

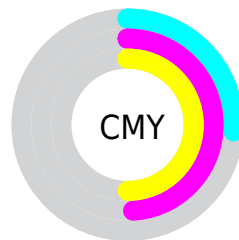


Cyan (0%)

Magenta (30%)

Yellow (32%)

Black (26%)



Cyan (26%)

Magenta (49%)

Yellow (50%)

Brightness & Saturation Gradients

These gradients show how the RYB color 188, 131, 127 changes by changing the brightness by 10 percent. The first figure shows a shift by +10% for each color and the second figure -10%.

Similar to the brightness gradients but the following saturation gradients show a change of the RYB color 188, 131, 127 by changing the saturation by 10% instead.


 188, 131, 127


255, 255, 255

 245, 184, 180

 255, 213, 207


 255, 242, 235

 188, 131, 127

 160, 105, 102

 133, 81, 78

 107, 57, 55

 81, 35, 34


 56, 13, 12


 36, 0, 1

 0, 0, 0

 188, 131, 127

 188, 113, 108

 188, 131, 127

 188, 148, 146

188, 95, 89

188, 166, 165

188, 78, 71

188, 184, 183

188, 61, 52

188, 195, 202

188, 44, 33

188, 204, 221

188, 26, 14

188, 213, 240

188, 13, 0

188, 221, 255

188, 222, 255

Harmonies

Analogous

The Analogous color harmony consists of three colors that are next to each other on the color wheel.



185, 130, 148



188, 131, 127



180, 151, 110

Triad

The Triadic color harmony groups three colors that are evenly spaced from another and form a triangle on the color wheel.



188, 131, 127



116, 151, 155



115, 138, 187

Complementary

The Complementary color scheme is a pair of colors which are on the opposite of each other on the color wheel.



188, 131, 127



127, 156, 188

Split Complementary

Split-complementary colors differ from the complementary color scheme. The scheme consists of three colors, the original color and two neighbors of the complement color.



89, 127, 180



188, 131, 127



93, 129, 157

Square

The Square scheme is like the rectangle color scheme, but the four colors are evenly spaced on the color wheel.



188, 131, 127



107, 150, 117



80, 120, 164



145, 141, 183

Rectangle

The Rectangle color scheme consists of four colors that form a rectangle on the color wheel.



188, 131, 127



153, 169, 104



80, 120, 164



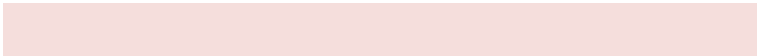
105, 134, 186

Sweetspot

The Sweet Spot groups the original color and five complimentary colors.



188, 131, 127



245, 222, 220



188, 127, 185



122, 109, 108



250, 250, 250



122, 122, 122

Same Dimension

The Same Dimension uses a secret algorithm to generate beautiful new colors.



188, 131, 127



245, 155, 149



175, 188, 127



94, 85, 85



158, 11, 0



31, 2, 0

Inverse Universe

The Inverse Universe completely reimagines the original color for something new.



127, 156, 188



149, 195, 245



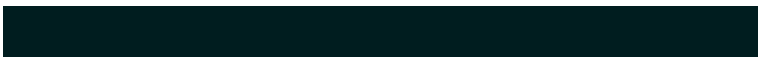
127, 146, 188



85, 90, 94



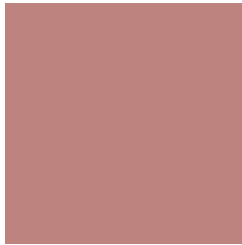
0, 76, 158



0, 15, 31

Previews

White Background



This preview shows how the RYB color 188, 131, 127 looks on a white background.

Color Contrast Check

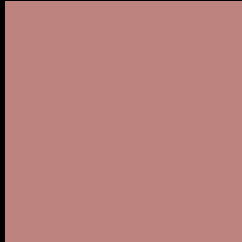
Large Text (above 18pt) WCAG AA ✓ Pass

Any Text WCAG AA × Fail

Large Text (above 18pt) WCAG AAA × Fail

Any Text WCAG AAA × Fail

Black Background



This preview shows how the RYB color 188, 131, 127 looks on a black background.

Color Contrast Check

Large Text (above 18pt) WCAG AA ✓ Pass

Any Text WCAG AA ✓ Pass

Large Text (above 18pt) WCAG AAA ✓ Pass

Any Text WCAG AAA × Fail

If you want to check with other color combinations, try the [Color Contrast Checker](#).

RYB 188, 131, 127 Background



This preview shows how black text looks on a background with the RYB color 188, 131, 127.

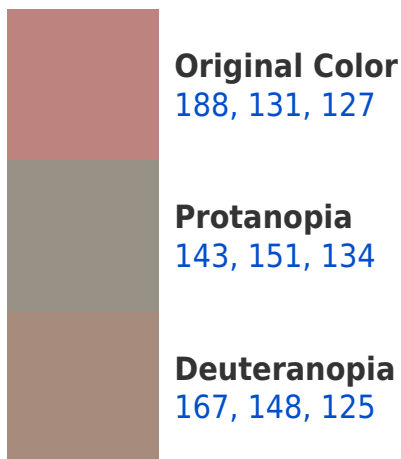


This preview shows how white text looks on a background with the RYB color 188, 131, 127.

Color Blindness Simulation

Color vision deficiency is a very complex topic, and I could not describe the different causes any better than Wikipedia does, so if you want to learn more, you should check out their [article about color blindness](#).

Dichromacy





Tritanopia
189, 129, 139

Trichromacy



Original Color

188, 131, 127

Protanomaly

164, 143, 131

Deuteranomaly

175, 140, 126

Tritanomaly

189, 130, 135

Monochromacy



Original Color

188, 131, 127

Achromatopsia

147, 147, 147

Achromatomaly

162, 141, 140

CSS Examples

Text

The CSS property to change the color of the text to RYB 188, 131, 127 is called "color". The color property can be set on classes, ids or directly on the HTML element.

This example shows how text in the color rgb(188, 131, 127) looks like.

```
.text, #text, p{  
    color:rgb(188, 131, 127)  
}
```

If you want to add a text shadow in that color use the text-shadow property, you can generate a text shadow directly with our [CSS Text Shadow Generator](#).

Here you see how black text with a 4 pixel rgb(188, 131, 127) colored shadow looks like.

```
.shadow{ text-shadow: 4px 4px 2px rgb(188, 131, 127) }
```

Border

The CSS property to change the border of an element to RYB 188, 131, 127 is called "border". The border property can be set on classes, ids or directly on the HTML element.

This example shows the color as border, it can be applied via the CSS property "border" or "border-color".

```
.border, #border, table{ border:4px solid rgb(188, 131, 127) }
```

If only the border color should be changed use the property `border-color`.

```
.border{ border-color:rgb(188, 131, 127) }
```

If you want to add a box shadow in that color use:

Here you see how a box with a 4 pixel `rgb(188, 131, 127)` colored shadow looks like.

```
.boxshadow{ -moz-box-shadow:4px 4px 4px  
4px rgb(188, 131, 127); -webkit-box-  
shadow:4px 4px 4px 4px rgb(188, 131, 127);  
box-shadow:4px 4px 4px 4px rgb(188, 131,  
127) }
```

Background

The CSS property to change the background color of an element to RYB 188, 131, 127 is called "background". The background property can be set on classes, ids or directly on the HTML element.

```
.background, #background, body{  
background: rgb(188, 131, 127) }
```

If only the background color should be changed can be used:

```
.background{ background-color: rgb(188,  
131, 127) }
```

This example shows the color as background, it is applied via the CSS property "background".

To optimize and compress your CSS code, you can use our [online CSS compressor and optimizer](#) based on csstidy. If you want to create a linear or radial gradient as background or border, check our [CSS Gradient Generator](#).

Hey! You found this booklet interesting? Support Converting Colors with the new Membership Option!

The pro membership hides all ads, plus gives you double the colors in the color bucket, and more awesome pro features!

[Learn more, Memberships starting at \\$2.50/m!](#)

**Follow me
on Twitter!**

@ConvertingColor