

Converting Colors

`RYB(188, 136, 109)`

Have a look what the booklet for
RYB(188, 136, 109) contains.

RYB(188, 136, 109)	3
<i>Conversions</i>	4
<i>Details</i>	6
<i>Harmonies</i>	11
<i>Previews</i>	23
<i>Color Blindness Simulation</i>	26
<i>CSS Examples</i>	29

Color

R_YB(188, 136, 109)

Conversions

Conversions Part 1

Format	Color
Hex	BC816D
RGB	188, 129, 109
RGB Percent	74%, 51%, 43%
CMY	0.2627, 0.4936, 0.5725
CMYK	0.00, 0.31, 0.42, 0.26
HSL	15°, 37%, 58%
HSV	15°, 42%, 74%
XYZ	31.3658, 27.5283, 18.1283
YIQ	144.3610, 41.5840, 6.2880

Conversions

Conversions Part 2

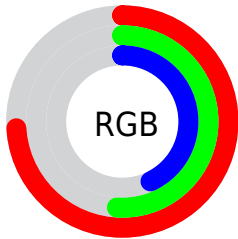
Format	Color
R_{YB}	188, 136, 109
Decimal	12353901
CIE _{Lab}	59.46, 20.26, 20.08
CIE _{LCh}	59, 28.525, 44.737
Yxy	27.5283, 0.4072, 0.3574
Android (android.graphics.Color)	4290543981 (0xFFBC816D)
YUV	144.3610, -17.4330, 38.2714
Hunter-Lab	52.4675, 14.8917, 16.2416

Details

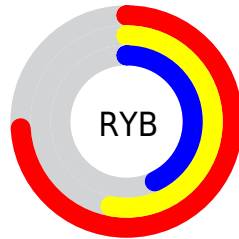
The RYB color **188, 136, 109** is a dark color, and the websafe version is hex **CC9999**. A complement of this color would be **109, 143, 188**, and the grayscale version is **145, 145, 145**.

A 20% lighter version of the original color is **246, 189, 161**, and **132, 85, 61** is the 20% darker color. If you saturate the color by 10%, you get **188, 124, 90**, and if you desaturate by 10%, it is **188, 148, 128**.

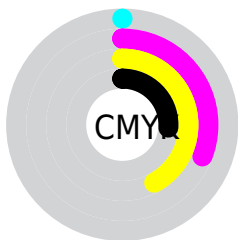
Distribution



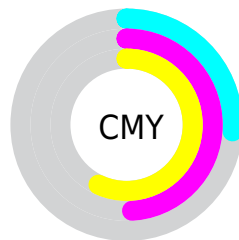
- Red (74%)
- Green (51%)
- Blue (43%)



- Red (74%)
- Yellow (53%)
- Blue (43%)



- Cyan (0%)
- Magenta (31%)
- Yellow (42%)
- Black (26%)



- Cyan (26%)
- Magenta (49%)
- Yellow (57%)

Brightness & Saturation Gradients

These gradients show how the RYB color 188, 136, 109 changes by changing the brightness by 10 percent. The first figure shows a shift by +10% for each color and the second figure -10%.

Similar to the brightness gradients but the following saturation gradients show a change of the RYB color 188, 136, 109 by changing the saturation by 10% instead.

 188, 136, 109

255, 255, 255

 246, 189, 161

 255, 221, 188

 245, 255, 215

 244, 255, 244

 188, 136, 109

 160, 110, 85

 132, 85, 61

 106, 62, 39


 80, 39, 19

 55, 15, 0

 32, 0, 1

 0, 0, 0

 188, 136, 109

 188, 124, 90

 188, 136, 109

 188, 148, 128

188, 111, 71

188, 160, 147

188, 98, 53

188, 173, 165

188, 86, 34

188, 185, 184

188, 74, 15

188, 194, 203

188, 64, 0

188, 202, 222

188, 210, 241

188, 218, 255

188, 222, 255

Harmonies

Analogous

The Analogous color harmony consists of three colors that are next to each other on the color wheel.



193, 124, 132



188, 136, 109



159, 172, 95

Triad

The Triadic color harmony groups three colors that are evenly spaced from another and form a triangle on the color wheel.



188, 136, 109



90, 131, 156



128, 139, 191

Complementary

The Complementary color scheme is a pair of colors which are on the opposite of each other on the color wheel.



188, 136, 109



109, 143, 188

Split Complementary

Split-complementary colors differ from the complementary color scheme. The scheme consists of three colors, the original color and two neighbors of the complement color.



90, 127, 191



188, 136, 109



64, 111, 157

Square

The Square scheme is like the rectangle color scheme, but the four colors are evenly spaced on the color wheel.



188, 136, 109



107, 152, 139



61, 113, 178



162, 132, 179

Rectangle

The Rectangle color scheme consists of four colors that form a rectangle on the color wheel.



188, 136, 109



111, 157, 93



61, 113, 178



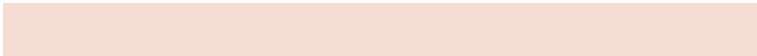
115, 136, 193

Sweetspot

The Sweet Spot groups the original color and five complimentary colors.



188, 136, 109



245, 224, 213



188, 109, 168



122, 110, 103



250, 250, 250



122, 122, 122

Same Dimension

The Same Dimension uses a secret algorithm to generate beautiful new colors.



188, 136, 109



245, 165, 122



136, 188, 109



94, 88, 85



158, 54, 0



31, 11, 0

Inverse Universe

The Inverse Universe completely reimagines the original color for something new.



109, 143, 188



122, 175, 245



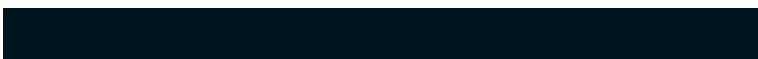
109, 125, 188



85, 89, 94



0, 68, 158



0, 13, 31

Previews

White Background



This preview shows how the RYB color 188, 136, 109 looks on a white background.

Color Contrast Check

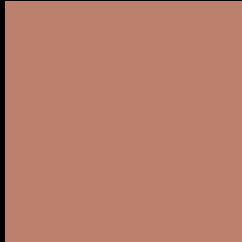
Large Text (above 18pt) WCAG AA ✓ Pass

Any Text WCAG AA × Fail

Large Text (above 18pt) WCAG AAA × Fail

Any Text WCAG AAA × Fail

Black Background



This preview shows how the RYB color 188, 136, 109 looks on a black background.

Color Contrast Check

Large Text (above 18pt) WCAG AA ✓ Pass

Any Text WCAG AA ✓ Pass

Large Text (above 18pt) WCAG AAA ✓ Pass

Any Text WCAG AAA × Fail

If you want to check with other color combinations, try the [Color Contrast Checker](#).

RYB 188, 136, 109 Background



This preview shows how black text looks on a background with the RYB color 188, 136, 109.



This preview shows how white text looks on a background with the RYB color 188, 136, 109.

Color Blindness Simulation

Color vision deficiency is a very complex topic, and I could not describe the different causes any better than Wikipedia does, so if you want to learn more, you should check out their [article about color blindness](#).

Dichromacy



Original Color
188, 136, 109

Protanopia
128, 152, 116

Deuteranopia
169, 169, 107



Tritanopia
190, 125, 135

Trichromacy



Original Color
188, 136, 109

Protanomaly
165, 161, 113

Deuteranomaly
176, 153, 108

Tritanomaly
189, 126, 126

Monochromacy



Original Color
188, 136, 109

Achromatopsia
144, 144, 144

Achromatomaly
160, 142, 131

CSS Examples

Text

The CSS property to change the color of the text to RYB 188, 136, 109 is called "color". The color property can be set on classes, ids or directly on the HTML element.

This example shows how text in the color `rgb(188, 129, 109)` looks like.

```
.text, #text, p{  
    color:rgb(188, 129, 109)  
}
```

If you want to add a text shadow in that color use the text-shadow property, you can generate a text shadow directly with our [CSS Text Shadow Generator](#).

Here you see how black text with a 4 pixel rgb(188, 129, 109) colored shadow looks like.

```
.shadow{ text-shadow: 4px 4px 2px rgb(188, 129, 109) }
```

Border

The CSS property to change the border of an element to RYB 188, 136, 109 is called "border". The border property can be set on classes, ids or directly on the HTML element.

This example shows the color as border, it can be applied via the CSS property "border" or "border-color".

```
.border, #border, table{ border:4px solid rgb(188, 129, 109) }
```

If only the border color should be changed use the property `border-color`.

```
.border{ border-color:rgb(188, 129, 109) }
```

If you want to add a box shadow in that color use:

Here you see how a box with a 4 pixel `rgb(188, 129, 109)` colored shadow looks like.

```
.boxshadow{ -moz-box-shadow:4px 4px 4px  
4px rgb(188, 129, 109); -webkit-box-  
shadow:4px 4px 4px 4px rgb(188, 129, 109);  
box-shadow:4px 4px 4px 4px rgb(188, 129,  
109) }
```

Background

The CSS property to change the background color of an element to RYB 188, 136, 109 is called "background". The background property can be set on classes, ids or directly on the HTML element.

```
.background, #background, body{  
background: rgb(188, 129, 109) }
```

If only the background color should be changed can be used:

```
.background{ background-color: rgb(188,  
129, 109) }
```

This example shows the color as background, it is applied via the CSS property "background".

To optimize and compress your CSS code, you can use our [online CSS compressor and optimizer](#) based on csstidy. If you want to create a linear or radial gradient as background or border, check our [CSS Gradient Generator](#).

Hey! You found this booklet interesting? Support Converting Colors with the new Membership Option!

The pro membership hides all ads, plus gives you double the colors in the color bucket, and more awesome pro features!

[Learn more, Memberships starting at \\$2.50/m!](#)

**Follow me
on Twitter!**

@ConvertingColor