

Converting Colors

`RYB(188, 164, 167)`

Have a look what the booklet for
RYB(188, 164, 167) contains.

RYB(188, 164, 167)	3
<i>Conversions</i>	4
<i>Details</i>	6
<i>Harmonies</i>	11
<i>Previews</i>	23
<i>Color Blindness Simulation</i>	26
<i>CSS Examples</i>	29

Color

$\text{RYB}(188, 164, 167)$

Conversions

Conversions Part 1

Format	Color
Hex	BCA4A7
RGB	188, 164, 167
RGB Percent	74%, 64%, 65%
CMY	0.2627, 0.3569, 0.3451
CMYK	0.00, 0.13, 0.11, 0.26
HSL	352°, 15%, 69%
HSV	352°, 13%, 74%
XYZ	40.9895, 40.0323, 42.1258
YIQ	171.5180, 13.3410, 6.0210

Conversions

Conversions Part 2

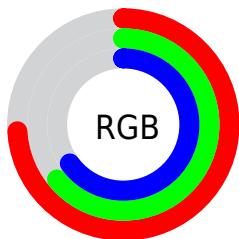
Format	Color
RYB	188, 164, 167
Decimal	12362919
CIELab	69.49, 9.26, 1.67
CIElCh	69, 9.406, 10.211
Yxy	40.0323, 0.3328, 0.3251
Android (android.graphics.Color)	4290552999 (0xFFBCA4A7)
YUV	171.5180, -2.2274, 14.4547
Hunter-Lab	63.2711, 4.9151, 4.8145

Details

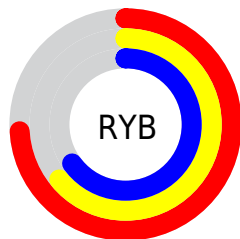
The RYB color **188, 164, 167** is a light color, and the websafe version is hex **999999**. A complement of this color would be **164, 177, 188**, and the grayscale version is **172, 172, 172**.

A 20% lighter version of the original color is **244, 219, 222**, and **135, 112, 115** is the 20% darker color. If you saturate the color by 10%, you get **188, 145, 151**, and if you desaturate by 10%, it is **188, 183, 183**.

Distribution



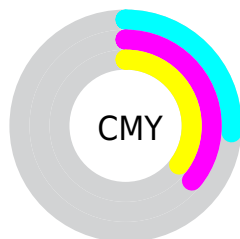
- Red (74%)
- Green (64%)
- Blue (65%)



- Red (74%)
- Yellow (64%)
- Blue (65%)



- Cyan (0%)
- Magenta (13%)
- Yellow (11%)
- Black (26%)



- Cyan (26%)
- Magenta (36%)
- Yellow (35%)

Brightness & Saturation Gradients

These gradients show how the RYB color 188, 164, 167 changes by changing the brightness by 10 percent. The first figure shows a shift by +10% for each color and the second figure -10%.

Similar to the brightness gradients but the following saturation gradients show a change of the RYB color 188, 164, 167 by changing the saturation by 10% instead.


 188, 164, 167

255, 255, 255

 244, 219, 222

 255, 247, 251


 188, 164, 167

 161, 138, 141

 135, 112, 115

 109, 88, 91

 85, 64, 67

 61, 42, 45

 39, 22, 25

 17, 0, 0

 0, 0, 0


 188, 164, 167


 188, 164, 167

 188, 145, 151


 188, 183, 183

 188, 126, 134

 188, 196, 202

 188, 108, 118

 188, 205, 220

 188, 89, 101

 188, 215, 239

 188, 70, 85

 188, 223, 255

 188, 51, 68

 188, 222, 255

 188, 32, 52

 188, 14, 35

 188, 0, 24

Harmonies

Analogous

The Analogous color harmony consists of three colors that are next to each other on the color wheel.



184, 165, 176



188, 164, 167



187, 167, 159

Triad

The Triadic color harmony groups three colors that are evenly spaced from another and form a triangle on the color wheel.



188, 164, 167



157, 173, 166



155, 166, 185

Complementary

The Complementary color scheme is a pair of colors which are on the opposite of each other on the color wheel.



188, 164, 167



164, 177, 188

Split Complementary

Split-complementary colors differ from the complementary color scheme. The scheme consists of three colors, the original color and two neighbors of the complement color.



149, 163, 180



188, 164, 167



155, 168, 174

Square

The Square scheme is like the rectangle color scheme, but the four colors are evenly spaced on the color wheel.



188, 164, 167



158, 174, 153



149, 163, 175



164, 168, 186

Rectangle

The Rectangle color scheme consists of four colors that form a rectangle on the color wheel.



188, 164, 167



184, 173, 155



149, 163, 175



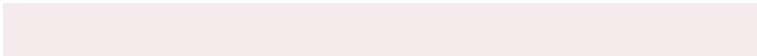
152, 165, 184

Sweetspot

The Sweet Spot groups the original color and five complimentary colors.



188, 164, 167



245, 235, 236



185, 164, 188



122, 116, 117



250, 250, 250



122, 122, 122

Same Dimension

The Same Dimension uses a secret algorithm to generate beautiful new colors.



188, 164, 167



245, 208, 213



188, 178, 164



94, 85, 86



158, 0, 20



31, 0, 4

Inverse Universe

The Inverse Universe completely reimagines the original color for something new.



188, 164, 167



245, 208, 213



164, 173, 188



94, 85, 86



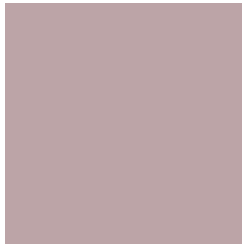
158, 0, 20



31, 0, 4

Previews

White Background



This preview shows how the RYB color 188, 164, 167 looks on a white background.

Color Contrast Check

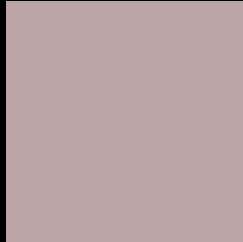
Large Text (above 18pt) WCAG AA × Fail

Any Text WCAG AA × Fail

Large Text (above 18pt) WCAG AAA × Fail

Any Text WCAG AAA × Fail

Black Background



This preview shows how the RYB color 188, 164, 167 looks on a black background.

Color Contrast Check

Large Text (above 18pt) WCAG AA ✓ Pass

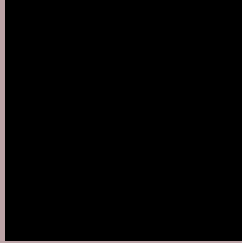
Any Text WCAG AA ✓ Pass

Large Text (above 18pt) WCAG AAA ✓ Pass

Any Text WCAG AAA ✓ Pass

If you want to check with other color combinations, try the [Color Contrast Checker](#).

RYB 188, 164, 167 Background



This preview shows how black text looks on a background with the RYB color 188, 164, 167.



This preview shows how white text looks on a background with the RYB color 188, 164, 167.

Color Blindness Simulation

Color vision deficiency is a very complex topic, and I could not describe the different causes any better than Wikipedia does, so if you want to learn more, you should check out their [article about color blindness](#).


Dichromacy



Original Color
188, 164, 167

Protanopia
173, 169, 170

Deuteranopia
187, 164, 167



Tritanopia
189, 163, 175

Trichromacy



Original Color

188, 164, 167

Protanomaly

178, 167, 169

Deuteranomaly

187, 164, 167

Tritanomaly

189, 163, 172

Monochromacy



Original Color

188, 164, 167

Achromatopsia

172, 172, 172

Achromatomaly

178, 169, 170

CSS Examples

Text

The CSS property to change the color of the text to RGB 188, 164, 167 is called "color". The color property can be set on classes, ids or directly on the HTML element.

This example shows how text in the color rgb(188, 164, 167) looks like.

```
.text, #text, p{  
    color:rgb(188, 164, 167)  
}
```

If you want to add a text shadow in that color use the text-shadow property, you can generate a text shadow directly with our [CSS Text Shadow Generator](#).

Here you see how black text with a 4 pixel rgb(188, 164, 167) colored shadow looks like.

```
.shadow{ text-shadow: 4px 4px 2px rgb(188, 164, 167) }
```

Border

The CSS property to change the border of an element to RYB 188, 164, 167 is called "border". The border property can be set on classes, ids or directly on the HTML element.

This example shows the color as border, it can be applied via the CSS property "border" or "border-color".

```
.border, #border, table{ border:4px solid rgb(188, 164, 167) }
```

If only the border color should be changed use the property `border-color`.

```
.border{ border-color:rgb(188, 164, 167) }
```

If you want to add a box shadow in that color use:

Here you see how a box with a 4 pixel `rgb(188, 164, 167)` colored shadow looks like.

```
.boxshadow{ -moz-box-shadow:4px 4px 4px  
4px rgb(188, 164, 167); -webkit-box-  
shadow:4px 4px 4px 4px rgb(188, 164, 167);  
box-shadow:4px 4px 4px 4px rgb(188, 164,  
167) }
```

Background

The CSS property to change the background color of an element to RYB 188, 164, 167 is called "background". The background property can be set on classes, ids or directly on the HTML element.

```
.background, #background, body{  
background: rgb(188, 164, 167) }
```

If only the background color should be changed can be used:

```
.background{ background-color: rgb(188,  
164, 167) }
```

This example shows the color as background, it is applied via the CSS property "background".

To optimize and compress your CSS code, you can use our [online CSS compressor and optimizer](#) based on csstidy. If you want to create a linear or radial gradient as background or border, check our [CSS Gradient Generator](#).

Hey! You found this booklet interesting? Support Converting Colors with the new Membership Option!

The pro membership hides all ads, plus gives you double the colors in the color bucket, and more awesome pro features!

[Learn more, Memberships starting at \\$2.50/m!](#)

**Follow me
on Twitter!**

@ConvertingColor