

Converting Colors

`RYB(188, 172, 174)`

Have a look what the booklet for
RYB(188, 172, 174) contains.

RYB(188, 172, 174)	3
<i>Conversions</i>	4
<i>Details</i>	6
<i>Harmonies</i>	11
<i>Previews</i>	23
<i>Color Blindness Simulation</i>	26
<i>CSS Examples</i>	29

Color

R_YB(188, 172, 174)

Conversions

Conversions Part 1

Format	Color
Hex	BCACAE
RGB	188, 172, 174
RGB Percent	74%, 67%, 68%
CMY	0.2627, 0.3255, 0.3176
CMYK	0.00, 0.09, 0.07, 0.26
HSL	352°, 11%, 71%
HSV	352°, 9%, 74%
XYZ	43.1315, 43.2524, 46.1197
YIQ	177.0120, 8.8940, 4.0140

Conversions

Conversions Part 2

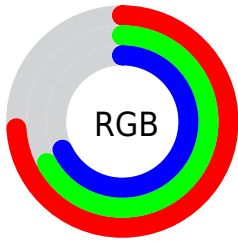
Format	Color
RYB	188, 172, 174
Decimal	12364974
CIELab	71.73, 6.10, 1.05
CIELCh	72, 6.189, 9.777
Yxy	43.2524, 0.3255, 0.3264
Android (android.graphics.Color)	4290555054 (0xFFBCACAE)
YUV	177.0120, -1.4849, 9.6365
Hunter-Lab	65.7666, 1.9738, 4.4587

Details

The RYB color **188, 172, 174** is a light color, and the websafe version is hex **999999**. A complement of this color would be **172, 181, 188**, and the grayscale version is **177, 177, 177**.

A 20% lighter version of the original color is **244, 227, 229**, and **135, 120, 122** is the 20% darker color. If you saturate the color by 10%, you get **188, 153, 158**, and if you desaturate by 10%, it is **188, 190, 191**.

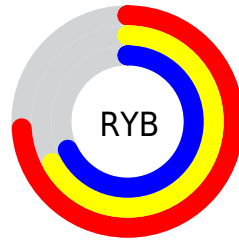
Distribution



Red (74%)

Green (67%)

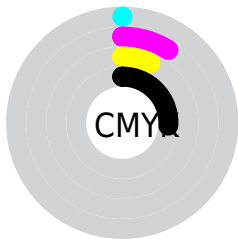
Blue (68%)



Red (74%)

Yellow (67%)

Blue (68%)

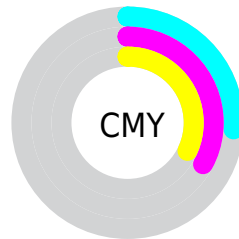


Cyan (0%)

Magenta (9%)

Yellow (7%)

Black (26%)



Cyan (26%)

Magenta (33%)

Yellow (32%)

Brightness & Saturation Gradients

These gradients show how the RYB color 188, 172, 174 changes by changing the brightness by 10 percent. The first figure shows a shift by +10% for each color and the second figure -10%.

Similar to the brightness gradients but the following saturation gradients show a change of the RYB color 188, 172, 174 by changing the saturation by 10% instead.

■ 188, 172, 174

255, 255, 255

■ 244, 227, 229

■ 188, 172, 174

■ 161, 145, 147

■ 135, 120, 122

■ 109, 95, 97

■ 85, 71, 73

■ 62, 49, 51

■ 40, 28, 30

■ 20, 1, 4

■ 0, 0, 0

■ 188, 172, 174

■ 188, 172, 174

188, 153, 158

188, 190, 191

188, 134, 141

188, 200, 210

188, 116, 125

188, 209, 228

188, 97, 108

188, 219, 247

188, 78, 92

188, 222, 255

188, 59, 75

188, 40, 59

188, 22, 42

188, 3, 26

Harmonies

Analogous

The Analogous color harmony consists of three colors that are next to each other on the color wheel.



185, 172, 180



188, 172, 174



188, 174, 169

Triad

The Triadic color harmony groups three colors that are evenly spaced from another and form a triangle on the color wheel.



188, 172, 174



167, 178, 173



166, 173, 186

Complementary

The Complementary color scheme is a pair of colors which are on the opposite of each other on the color wheel.



188, 172, 174



172, 181, 188

Split Complementary

Split-complementary colors differ from the complementary color scheme. The scheme consists of three colors, the original color and two neighbors of the complement color.



163, 172, 183



188, 172, 174



166, 175, 179

Square

The Square scheme is like the rectangle color scheme, but the four colors are evenly spaced on the color wheel.



188, 172, 174



169, 179, 165



163, 172, 179



172, 175, 187

Rectangle

The Rectangle color scheme consists of four colors that form a rectangle on the color wheel.



188, 172, 174



186, 179, 166



163, 172, 179



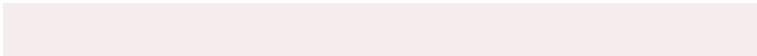
165, 173, 185

Sweetspot

The Sweet Spot groups the original color and five complimentary colors.



188, 172, 174



245, 237, 238



186, 172, 188



122, 118, 118



250, 250, 250



122, 122, 122

Same Dimension

The Same Dimension uses a secret algorithm to generate beautiful new colors.



188, 172, 174



245, 220, 223



188, 182, 172



94, 85, 86



158, 0, 20



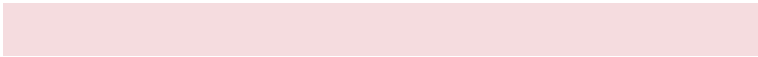
31, 0, 4

Inverse Universe

The Inverse Universe completely reimagines the original color for something new.



188, 172, 174



245, 220, 223



172, 178, 188



94, 85, 86



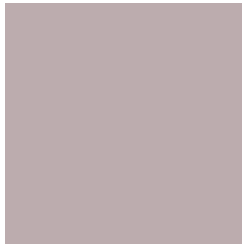
158, 0, 20



31, 0, 4

Previews

White Background



This preview shows how the RYB color 188, 172, 174 looks on a white background.

Color Contrast Check

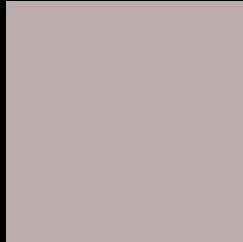
Large Text (above 18pt) WCAG AA × Fail

Any Text WCAG AA × Fail

Large Text (above 18pt) WCAG AAA × Fail

Any Text WCAG AAA × Fail

Black Background



This preview shows how the RYB color 188, 172, 174 looks on a black background.

Color Contrast Check

Large Text (above 18pt) WCAG AA ✓ Pass

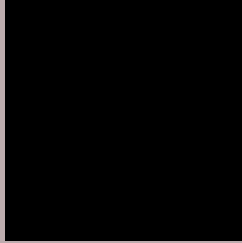
Any Text WCAG AA ✓ Pass

Large Text (above 18pt) WCAG AAA ✓ Pass

Any Text WCAG AAA ✓ Pass

If you want to check with other color combinations, try the [Color Contrast Checker](#).

R Y B 188, 172, 174 Background



This preview shows how black text looks on a background with the RYB color 188, 172, 174.



This preview shows how white text looks on a background with the RYB color 188, 172, 174.

Color Blindness Simulation

Color vision deficiency is a very complex topic, and I could not describe the different causes any better than Wikipedia does, so if you want to learn more, you should check out their [article about color blindness](#).


Dichromacy



Original Color
188, 172, 174

Protanopia
179, 175, 176

Deuteranopia
193, 170, 174



Tritanopia
189, 170, 184

Trichromacy



Original Color

188, 172, 174

Protanomaly

182, 174, 175

Deuteranomaly

191, 171, 174

Tritanomaly

189, 171, 180

Monochromacy



Original Color

188, 172, 174

Achromatopsia

177, 177, 177

Achromatomaly

181, 175, 176

CSS Examples

Text

The CSS property to change the color of the text to RGB 188, 172, 174 is called "color". The color property can be set on classes, ids or directly on the HTML element.

This example shows how text in the color rgb(188, 172, 174) looks like.

```
.text, #text, p{  
    color:rgb(188, 172, 174)  
}
```

If you want to add a text shadow in that color use the text-shadow property, you can generate a text shadow directly with our [CSS Text Shadow Generator](#).

Here you see how black text with a 4 pixel rgb(188, 172, 174) colored shadow looks like.

```
.shadow{ text-shadow: 4px 4px 2px rgb(188, 172, 174) }
```

Border

The CSS property to change the border of an element to RYB 188, 172, 174 is called "border". The border property can be set on classes, ids or directly on the HTML element.

This example shows the color as border, it can be applied via the CSS property "border" or "border-color".

```
.border, #border, table{ border:4px solid rgb(188, 172, 174) }
```

If only the border color should be changed use the property `border-color`.

```
.border{ border-color:rgb(188, 172, 174) }
```

If you want to add a box shadow in that color use:

Here you see how a box with a 4 pixel `rgb(188, 172, 174)` colored shadow looks like.

```
.boxshadow{ -moz-box-shadow:4px 4px 4px  
4px rgb(188, 172, 174); -webkit-box-  
shadow:4px 4px 4px 4px rgb(188, 172, 174);  
box-shadow:4px 4px 4px 4px rgb(188, 172,  
174) }
```

Background

The CSS property to change the background color of an element to RYB 188, 172, 174 is called "background". The background property can be set on classes, ids or directly on the HTML element.

```
.background, #background, body{  
background: rgb(188, 172, 174) }
```

If only the background color should be changed can be used:

```
.background{ background-color: rgb(188,  
172, 174) }
```

This example shows the color as background, it is applied via the CSS property "background".

To optimize and compress your CSS code, you can use our [online CSS compressor and optimizer](#) based on csstidy. If you want to create a linear or radial gradient as background or border, check our [CSS Gradient Generator](#).

Hey! You found this booklet interesting? Support Converting Colors with the new Membership Option!

The pro membership hides all ads, plus gives you double the colors in the color bucket, and more awesome pro features!

[Learn more, Memberships starting at \\$2.50/m!](#)

**Follow me
on Twitter!**

@ConvertingColor