

Converting Colors

`RYB(190, 149, 137)`

Have a look what the booklet for
RYB(190, 149, 137) contains.

RYB(190, 149, 137)	3
<i>Conversions</i>	4
<i>Details</i>	6
<i>Harmonies</i>	11
<i>Previews</i>	23
<i>Color Blindness Simulation</i>	26
<i>CSS Examples</i>	29

Color

R_YB(190, 149, 137)

Conversions

Conversions Part 1

Format	Color
Hex	BE9389
RGB	190, 147, 137
RGB Percent	75%, 58%, 54%
CMY	0.2549, 0.4244, 0.4627
CMYK	0.00, 0.23, 0.28, 0.25
HSL	11°, 29%, 64%
HSV	11°, 28%, 75%
XYZ	36.1508, 33.5538, 28.2381
YIQ	158.7170, 28.8380, 6.0060

Conversions

Conversions Part 2

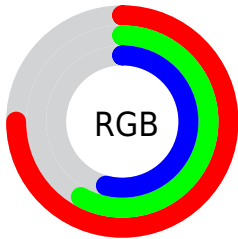
Format	Color
RYB	190, 149, 137
Decimal	12489609
CIELab	64.61, 14.82, 11.43
CIELCh	65, 18.722, 37.644
Yxy	33.5538, 0.3691, 0.3426
Android (android.graphics.Color)	4290679689 (0xFFBE9389)
YUV	158.7170, -10.7065, 27.4352
Hunter-Lab	57.9256, 10.0302, 11.6448

Details

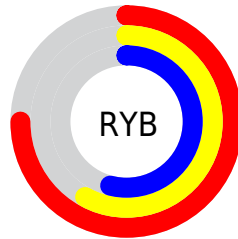
The RYB color **190, 149, 137** is a light color, and the websafe version is hex **CC9999**. A complement of this color would be **137, 161, 190**, and the grayscale version is **159, 159, 159**.

A 20% lighter version of the original color is **247, 204, 190**, and **136, 98, 87** is the 20% darker color. If you saturate the color by 10%, you get **190, 134, 118**, and if you desaturate by 10%, it is **190, 163, 156**.

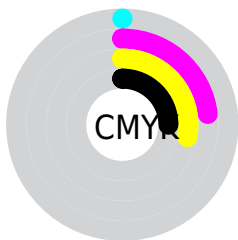
Distribution



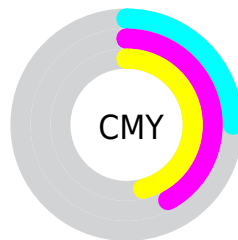
- Red (75%)
- Green (58%)
- Blue (54%)



- Red (75%)
- Yellow (58%)
- Blue (54%)



- Cyan (0%)
- Magenta (23%)
- Yellow (28%)
- Black (25%)




- Cyan (25%)
- Magenta (42%)
- Yellow (46%)

Brightness & Saturation Gradients

These gradients show how the RYB color 190, 149, 137 changes by changing the brightness by 10 percent. The first figure shows a shift by +10% for each color and the second figure -10%.

Similar to the brightness gradients but the following saturation gradients show a change of the RYB color 190, 149, 137 by changing the saturation by 10% instead.


 190, 149, 137


255, 255, 255

 247, 204, 190

 255, 234, 218

 247, 255, 247

 190, 149, 137

 162, 123, 112

 136, 98, 87


 109, 74, 64


 84, 50, 42


 60, 30, 21


 38, 4, 0

 0, 0, 0

 190, 149, 137

 190, 134, 118

 190, 149, 137

 190, 163, 156

■ 190, 120, 99

■ 190, 179, 175

■ 190, 104, 80

■ 190, 192, 194

■ 190, 90, 61

■ 190, 200, 213

■ 190, 75, 42

■ 190, 209, 232

■ 190, 61, 23

■ 190, 217, 251

■ 190, 46, 4

■ 190, 223, 255

■ 190, 43, 0

Harmonies

Analogous

The Analogous color harmony consists of three colors that are next to each other on the color wheel.



191, 145, 153



190, 149, 137



181, 172, 126

Triad

The Triadic color harmony groups three colors that are evenly spaced from another and form a triangle on the color wheel.



190, 149, 137



128, 154, 165



143, 154, 190

Complementary

The Complementary color scheme is a pair of colors which are on the opposite of each other on the color wheel.



190, 149, 137



137, 161, 190

Split Complementary

Split-complementary colors differ from the complementary color scheme. The scheme consists of three colors, the original color and two neighbors of the complement color.



123, 147, 187



190, 149, 137



114, 142, 166

Square

The Square scheme is like the rectangle color scheme, but the four colors are evenly spaced on the color wheel.



190, 149, 137



130, 162, 146



111, 140, 176



165, 151, 183

Rectangle

The Rectangle color scheme consists of four colors that form a rectangle on the color wheel.



190, 149, 137



147, 171, 123



111, 140, 176



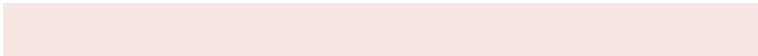
136, 152, 190

Sweetspot

The Sweet Spot groups the original color and five complimentary colors.



190, 149, 137



247, 232, 228



190, 137, 180



125, 116, 112



252, 252, 252



125, 125, 125

Same Dimension

The Same Dimension uses a secret algorithm to generate beautiful new colors.



190, 149, 137



247, 184, 166



162, 190, 137



94, 88, 85



158, 36, 0



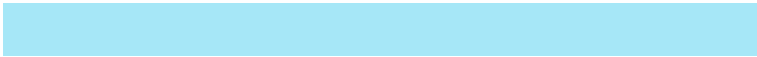
31, 7, 0

Inverse Universe

The Inverse Universe completely reimagines the original color for something new.



137, 161, 190



166, 202, 247



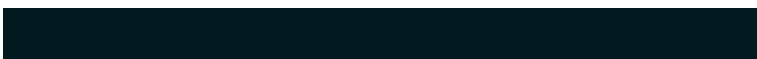
137, 150, 190



85, 89, 94



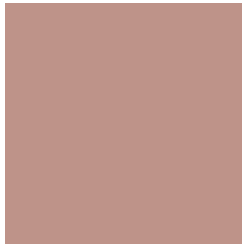
0, 71, 158



0, 14, 31

Previews

White Background



This preview shows how the RYB color 190, 149, 137 looks on a white background.

Color Contrast Check

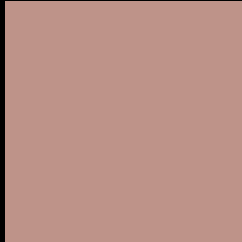
Large Text (above 18pt) WCAG AA × Fail

Any Text WCAG AA × Fail

Large Text (above 18pt) WCAG AAA × Fail

Any Text WCAG AAA × Fail

Black Background



This preview shows how the RYB color 190, 149, 137 looks on a black background.

Color Contrast Check

Large Text (above 18pt) WCAG AA ✓ Pass

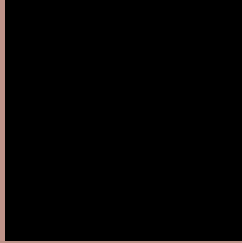
Any Text WCAG AA ✓ Pass

Large Text (above 18pt) WCAG AAA ✓ Pass

Any Text WCAG AAA ✓ Pass

If you want to check with other color combinations, try the [Color Contrast Checker](#).

RYB 190, 149, 137 Background



This preview shows how black text looks on a background with the RYB color 190, 149, 137.



This preview shows how white text looks on a background with the RYB color 190, 149, 137.

Color Blindness Simulation

Color vision deficiency is a very complex topic, and I could not describe the different causes any better than Wikipedia does, so if you want to learn more, you should check out their [article about color blindness](#).

Dichromacy



Original Color
190, 149, 137

Protanopia
153, 163, 142

Deuteranopia
180, 159, 136



Tritanopia
192, 144, 155

Trichromacy



Original Color

190, 149, 137

Protanomaly

173, 161, 140

Deuteranomaly

184, 154, 136

Tritanomaly

191, 145, 148

Monochromacy



Original Color

190, 149, 137

Achromatopsia

159, 159, 159

Achromatomaly

170, 156, 151

CSS Examples

Text

The CSS property to change the color of the text to RYB 190, 149, 137 is called "color". The color property can be set on classes, ids or directly on the HTML element.

This example shows how text in the color `rgb(190, 147, 137)` looks like.

```
.text, #text, p{  
    color:rgb(190, 147, 137)  
}
```

If you want to add a text shadow in that color use the text-shadow property, you can generate a text shadow directly with our [CSS Text Shadow Generator](#).

Here you see how black text with a 4 pixel rgb(190, 147, 137) colored shadow looks like.

```
.shadow{ text-shadow: 4px 4px 2px rgb(190, 147, 137) }
```

Border

The CSS property to change the border of an element to RYB 190, 149, 137 is called "border". The border property can be set on classes, ids or directly on the HTML element.

This example shows the color as border, it can be applied via the CSS property "border" or "border-color".

```
.border, #border, table{ border:4px solid rgb(190, 147, 137) }
```

If only the border color should be changed use the property `border-color`.

```
.border{ border-color:rgb(190, 147, 137) }
```

If you want to add a box shadow in that color use:

Here you see how a box with a 4 pixel `rgb(190, 147, 137)` colored shadow looks like.

```
.boxshadow{ -moz-box-shadow:4px 4px 4px  
4px rgb(190, 147, 137); -webkit-box-  
shadow:4px 4px 4px 4px rgb(190, 147, 137);  
box-shadow:4px 4px 4px 4px rgb(190, 147,  
137) }
```

Background

The CSS property to change the background color of an element to RYB 190, 149, 137 is called "background". The background property can be set on classes, ids or directly on the HTML element.

```
.background, #background, body{  
background: rgb(190, 147, 137) }
```

If only the background color should be changed can be used:

```
.background{ background-color: rgb(190,  
147, 137) }
```

This example shows the color as background, it is applied via the CSS property "background".

To optimize and compress your CSS code, you can use our [online CSS compressor and optimizer](#) based on csstidy. If you want to create a linear or radial gradient as background or border, check our [CSS Gradient Generator](#).

Hey! You found this booklet interesting? Support Converting Colors with the new Membership Option!

The pro membership hides all ads, plus gives you double the colors in the color bucket, and more awesome pro features!

[Learn more, Memberships starting at \\$2.50/m!](#)

**Follow me
on Twitter!**

@ConvertingColor