

Converting Colors

`RYB(190, 151, 150)`

Have a look what the booklet for
RYB(190, 151, 150) contains.

RYB(190, 151, 150)	3
<i>Conversions</i>	4
<i>Details</i>	6
<i>Harmonies</i>	11
<i>Previews</i>	23
<i>Color Blindness Simulation</i>	26
<i>CSS Examples</i>	29

Color

R_YB(190, 151, 150)

Conversions

Conversions Part 1

Format	Color
Hex	BE9796
RGB	190, 151, 150
RGB Percent	75%, 59%, 59%
CMY	0.2549, 0.4079, 0.4118
CMYK	0.00, 0.21, 0.21, 0.25
HSL	1°, 24%, 67%
HSV	1°, 21%, 75%
XYZ	37.8029, 35.2745, 33.6704
YIQ	162.5470, 23.5650, 7.9570

Conversions

Conversions Part 2

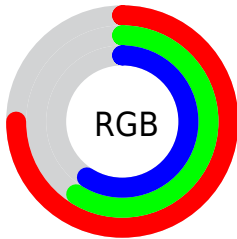
Format	Color
RYB	190, 151, 150
Decimal	12490646
CIELab	65.96, 14.42, 6.07
CIELCh	66, 15.645, 22.817
Yxy	35.2745, 0.3541, 0.3304
Android (android.graphics.Color)	4290680726 (0xFFBE9796)
YUV	162.5470, -6.1857, 24.0763
Hunter-Lab	59.3924, 9.6776, 7.9623

Details

The RYB color **190, 151, 150** is a light color, and the websafe version is hex **CC9999**. A complement of this color would be **150, 170, 190**, and the grayscale version is **163, 163, 163**.

A 20% lighter version of the original color is **247, 205, 204**, and **136, 100, 99** is the 20% darker color. If you saturate the color by 10%, you get **190, 132, 131**, and if you desaturate by 10%, it is **190, 170, 169**.

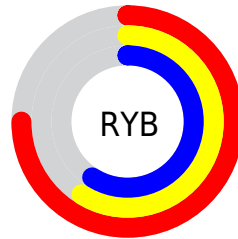
Distribution



Red (75%)

Green (59%)

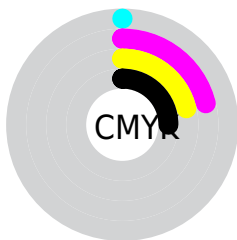
Blue (59%)



Red (75%)

Yellow (59%)

Blue (59%)

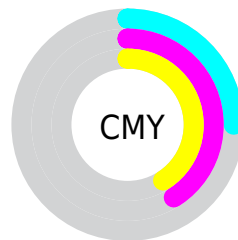


Cyan (0%)

Magenta (21%)

Yellow (21%)

Black (25%)



Cyan (25%)

Magenta (41%)

Yellow (41%)

Brightness & Saturation Gradients

These gradients show how the RYB color 190, 151, 150 changes by changing the brightness by 10 percent. The first figure shows a shift by +10% for each color and the second figure -10%.

Similar to the brightness gradients but the following saturation gradients show a change of the RYB color 190, 151, 150 by changing the saturation by 10% instead.

 190, 151, 150

255, 255, 255

 247, 205, 204

 255, 234, 232


 190, 151, 150

 163, 125, 124

 136, 100, 99

 110, 76, 75

 85, 53, 53

 61, 31, 32

 39, 10, 8

 0, 0, 0

 190, 151, 150

 190, 132, 131

 190, 151, 150

 190, 170, 169

■ 190, 114, 112

■ 190, 188, 188

■ 190, 95, 93

■ 190, 199, 207

■ 190, 77, 74

■ 190, 208, 226

■ 190, 58, 55

■ 190, 217, 245

■ 190, 40, 36

■ 190, 223, 255

■ 190, 21, 17

■ 190, 5, 0

Harmonies

Analogous

The Analogous color harmony consists of three colors that are next to each other on the color wheel.



187, 151, 164



190, 151, 150



186, 162, 138

Triad

The Triadic color harmony groups three colors that are evenly spaced from another and form a triangle on the color wheel.



190, 151, 150



143, 166, 165



141, 156, 188

Complementary

The Complementary color scheme is a pair of colors which are on the opposite of each other on the color wheel.



190, 151, 150



150, 170, 190

Split Complementary

Split-complementary colors differ from the complementary color scheme. The scheme consists of three colors, the original color and two neighbors of the complement color.



127, 150, 182



190, 151, 150



130, 153, 168

Square

The Square scheme is like the rectangle color scheme, but the four colors are evenly spaced on the color wheel.



190, 151, 150



134, 163, 137



123, 146, 171



159, 158, 186

Rectangle

The Rectangle color scheme consists of four colors that form a rectangle on the color wheel.



190, 151, 150



177, 179, 134



123, 146, 171



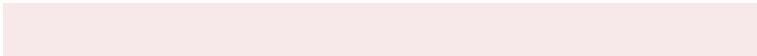
135, 154, 187

Sweetspot

The Sweet Spot groups the original color and five complimentary colors.



190, 151, 150



247, 233, 233



190, 150, 189



125, 116, 116



252, 252, 252



125, 125, 125

Same Dimension

The Same Dimension uses a secret algorithm to generate beautiful new colors.



190, 151, 150



247, 187, 186



186, 190, 150



94, 85, 85



158, 4, 0



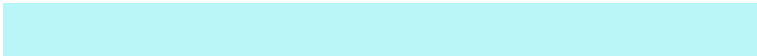
31, 1, 0

Inverse Universe

The Inverse Universe completely reimagines the original color for something new.



150, 170, 190



186, 216, 247



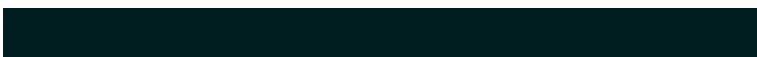
150, 163, 190



85, 90, 94



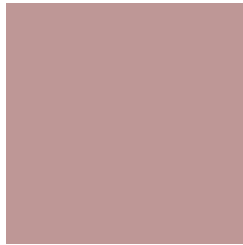
0, 78, 158



0, 15, 31

Previews

White Background



This preview shows how the RYB color 190, 151, 150 looks on a white background.

Color Contrast Check

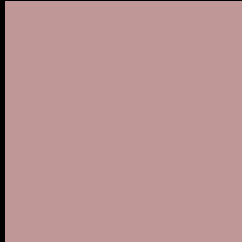
Large Text (above 18pt) WCAG AA × Fail

Any Text WCAG AA × Fail

Large Text (above 18pt) WCAG AAA × Fail

Any Text WCAG AAA × Fail

Black Background



This preview shows how the RYB color 190, 151, 150 looks on a black background.

Color Contrast Check

Large Text (above 18pt) WCAG AA ✓ Pass

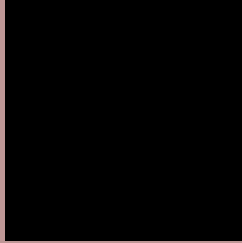
Any Text WCAG AA ✓ Pass

Large Text (above 18pt) WCAG AAA ✓ Pass

Any Text WCAG AAA ✓ Pass

If you want to check with other color combinations, try the [Color Contrast Checker](#).

RYB 190, 151, 150 Background



This preview shows how black text looks on a background with the RYB color 190, 151, 150.



This preview shows how white text looks on a background with the RYB color 190, 151, 150.

Color Blindness Simulation

Color vision deficiency is a very complex topic, and I could not describe the different causes any better than Wikipedia does, so if you want to learn more, you should check out their [article about color blindness](#).

Dichromacy



Original Color
190, 151, 150

Protanopia
165, 165, 155

Deuteranopia
180, 156, 149



Tritanopia
191, 149, 161

Trichromacy



Original Color
190, 151, 150

Protanomaly
174, 158, 153

Deuteranomaly
184, 155, 149

Tritanomaly
191, 150, 157

Monochromacy



Original Color
190, 151, 150

Achromatopsia
163, 163, 163

Achromatomaly
173, 159, 158

CSS Examples

Text

The CSS property to change the color of the text to RYB 190, 151, 150 is called "color". The color property can be set on classes, ids or directly on the HTML element.

This example shows how text in the color `rgb(190, 151, 150)` looks like.

```
.text, #text, p{  
    color:rgb(190, 151, 150)  
}
```

If you want to add a text shadow in that color use the text-shadow property, you can generate a text shadow directly with our [CSS Text Shadow Generator](#).

Here you see how black text with a 4 pixel rgb(190, 151, 150) colored shadow looks like.

```
.shadow{ text-shadow: 4px 4px 2px rgb(190, 151, 150) }
```

Border

The CSS property to change the border of an element to RYB 190, 151, 150 is called "border". The border property can be set on classes, ids or directly on the HTML element.

This example shows the color as border, it can be applied via the CSS property "border" or "border-color".

```
.border, #border, table{ border:4px solid rgb(190, 151, 150) }
```

If only the border color should be changed use the property `border-color`.

```
.border{ border-color:rgb(190, 151, 150) }
```

If you want to add a box shadow in that color use:

Here you see how a box with a 4 pixel `rgb(190, 151, 150)` colored shadow looks like.

```
.boxshadow{ -moz-box-shadow:4px 4px 4px  
4px rgb(190, 151, 150); -webkit-box-  
shadow:4px 4px 4px 4px rgb(190, 151, 150);  
box-shadow:4px 4px 4px 4px rgb(190, 151,  
150) }
```

Background

The CSS property to change the background color of an element to RYB 190, 151, 150 is called "background". The background property can be set on classes, ids or directly on the HTML element.

```
.background, #background, body{  
background: rgb(190, 151, 150) }
```

If only the background color should be changed can be used:

```
.background{ background-color: rgb(190,  
151, 150) }
```

This example shows the color as background, it is applied via the CSS property "background".

To optimize and compress your CSS code, you can use our [online CSS compressor and optimizer](#) based on csstidy. If you want to create a linear or radial gradient as background or border, check our [CSS Gradient Generator](#).

Hey! You found this booklet interesting? Support Converting Colors with the new Membership Option!

The pro membership hides all ads, plus gives you double the colors in the color bucket, and more awesome pro features!

[Learn more, Memberships starting at \\$2.50/m!](#)

**Follow me
on Twitter!**

@ConvertingColor