

Converting Colors

`RYB(190, 170, 171)`

Have a look what the booklet for
RYB(190, 170, 171) contains.

RYB(190, 170, 171)	3
<i>Conversions</i>	4
<i>Details</i>	6
<i>Harmonies</i>	11
<i>Previews</i>	23
<i>Color Blindness Simulation</i>	26
<i>CSS Examples</i>	29

Color

R_YB(190, 170, 171)

Conversions

Conversions Part 1

Format	Color
Hex	BEAAAB
RGB	190, 170, 171
RGB Percent	75%, 67%, 67%
CMY	0.2549, 0.3333, 0.3294
CMYK	0.00, 0.11, 0.10, 0.25
HSL	357°, 13%, 71%
HSV	357°, 11%, 75%
XYZ	42.9606, 42.6369, 44.4935
YIQ	176.0940, 11.5990, 4.5510

Conversions

Conversions Part 2

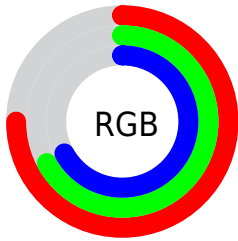
Format	Color
RYB	190, 170, 171
Decimal	12495531
CIELab	71.31, 7.39, 2.12
CIELCh	71, 7.690, 15.975
Yxy	42.6369, 0.3302, 0.3277
Android (android.graphics.Color)	4290685611 (0xFFBEAAB)
YUV	176.0940, -2.5113, 12.1956
Hunter-Lab	65.2969, 3.1704, 5.3074

Details

The RYB color **190, 170, 171** is a light color, and the websafe version is hex **999999**. A complement of this color would be **170, 180, 190**, and the grayscale version is **176, 176, 176**.

A 20% lighter version of the original color is **246, 225, 226**, and **137, 118, 119** is the 20% darker color. If you saturate the color by 10%, you get **190, 151, 153**, and if you desaturate by 10%, it is **190, 189, 189**.

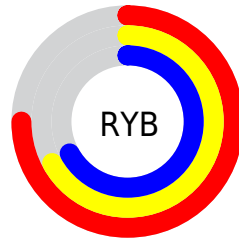
Distribution



Red (75%)

Green (67%)

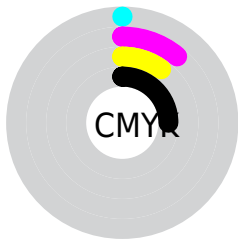
Blue (67%)



Red (75%)

Yellow (67%)

Blue (67%)

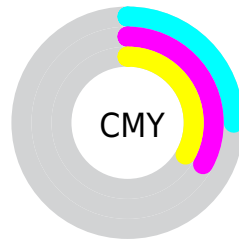


Cyan (0%)

Magenta (11%)

Yellow (10%)

Black (25%)



Cyan (25%)

Magenta (33%)

Yellow (33%)

Brightness & Saturation Gradients

These gradients show how the RYB color 190, 170, 171 changes by changing the brightness by 10 percent. The first figure shows a shift by +10% for each color and the second figure -10%.


Similar to the brightness gradients but the following saturation gradients show a change of the RYB color 190, 170, 171 by changing the saturation by 10% instead.


 190, 170, 171


255, 255, 255

 246, 225, 226

255, 254, 255

 190, 170, 171


 163, 144, 145

 137, 118, 119

 111, 93, 94


 87, 70, 71


 63, 47, 48

 41, 26, 27

 22, 0, 0


 0, 0, 0


 190, 170, 171


 190, 170, 171

 190, 151, 153

 190, 189, 189

 190, 132, 135

 190, 199, 208

 190, 113, 117

 190, 209, 227

 190, 94, 99

 190, 219, 246

 190, 75, 81

 190, 223, 255

 190, 56, 63

 190, 37, 45

 190, 18, 27

 190, 0, 9

Harmonies

Analogous

The Analogous color harmony consists of three colors that are next to each other on the color wheel.



187, 170, 178



190, 170, 171



189, 173, 165

Triad

The Triadic color harmony groups three colors that are evenly spaced from another and form a triangle on the color wheel.



190, 170, 171



165, 177, 174



164, 172, 188

Complementary

The Complementary color scheme is a pair of colors which are on the opposite of each other on the color wheel.



190, 170, 171



170, 180, 190

Split Complementary

Split-complementary colors differ from the complementary color scheme. The scheme consists of three colors, the original color and two neighbors of the complement color.



159, 170, 184



190, 170, 171



161, 173, 179

Square

The Square scheme is like the rectangle color scheme, but the four colors are evenly spaced on the color wheel.



190, 170, 171



162, 176, 161



158, 169, 179



172, 174, 188

Rectangle

The Rectangle color scheme consists of four colors that form a rectangle on the color wheel.



190, 170, 171



186, 179, 162



158, 169, 179



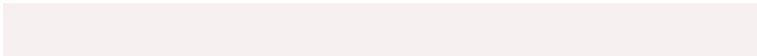
162, 171, 187

Sweetspot

The Sweet Spot groups the original color and five complimentary colors.



190, 170, 171



247, 240, 240



189, 170, 190



125, 120, 120



252, 252, 252



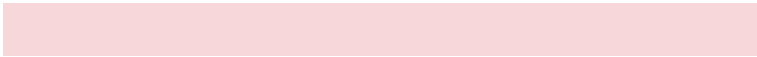
125, 125, 125

Same Dimension

The Same Dimension uses a secret algorithm to generate beautiful new colors.



190, 170, 171



247, 215, 217



190, 186, 170



94, 85, 85



158, 0, 8



31, 0, 2

Inverse Universe

The Inverse Universe completely reimagines the original color for something new.



190, 170, 171



247, 215, 217



170, 177, 190



94, 85, 85



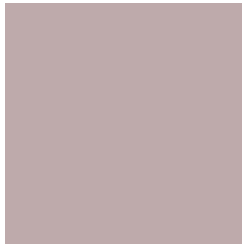
158, 0, 8



31, 0, 2

Previews

White Background



This preview shows how the RYB color 190, 170, 171 looks on a white background.

Color Contrast Check

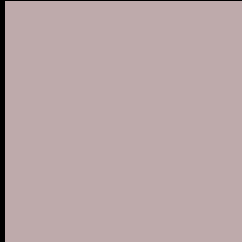
Large Text (above 18pt) WCAG AA × Fail

Any Text WCAG AA × Fail

Large Text (above 18pt) WCAG AAA × Fail

Any Text WCAG AAA × Fail

Black Background



This preview shows how the RYB color 190, 170, 171 looks on a black background.

Color Contrast Check

Large Text (above 18pt) WCAG AA ✓ Pass

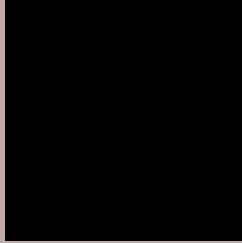
Any Text WCAG AA ✓ Pass

Large Text (above 18pt) WCAG AAA ✓ Pass

Any Text WCAG AAA ✓ Pass

If you want to check with other color combinations, try the [Color Contrast Checker](#).

RYB 190, 170, 171 Background



This preview shows how black text looks on a background with the RYB color 190, 170, 171.



This preview shows how white text looks on a background with the RYB color 190, 170, 171.

Color Blindness Simulation

Color vision deficiency is a very complex topic, and I could not describe the different causes any better than Wikipedia does, so if you want to learn more, you should check out their [article about color blindness](#).


Dichromacy



Original Color
190, 170, 171

Protanopia
178, 174, 173

Deuteranopia
193, 169, 171



Tritanopia
191, 168, 182

Trichromacy



Original Color

190, 170, 171

Protanomaly

182, 173, 172

Deuteranomaly

192, 169, 171

Tritanomaly

191, 169, 178

Monochromacy



Original Color

190, 170, 171

Achromatopsia

176, 176, 176

Achromatomaly

181, 174, 174

CSS Examples

Text

The CSS property to change the color of the text to RYB 190, 170, 171 is called "color". The color property can be set on classes, ids or directly on the HTML element.

This example shows how text in the color rgb(190, 170, 171) looks like.

```
.text, #text, p{  
    color:rgb(190, 170, 171)  
}
```

If you want to add a text shadow in that color use the text-shadow property, you can generate a text shadow directly with our [CSS Text Shadow Generator](#).

Here you see how black text with a 4 pixel rgb(190, 170, 171) colored shadow looks like.

```
.shadow{ text-shadow: 4px 4px 2px rgb(190, 170, 171) }
```

Border

The CSS property to change the border of an element to RYB 190, 170, 171 is called "border". The border property can be set on classes, ids or directly on the HTML element.

This example shows the color as border, it can be applied via the CSS property "border" or "border-color".

```
.border, #border, table{ border:4px solid rgb(190, 170, 171) }
```

If only the border color should be changed use the property `border-color`.

```
.border{ border-color:rgb(190, 170, 171) }
```

If you want to add a box shadow in that color use:

Here you see how a box with a 4 pixel `rgb(190, 170, 171)` colored shadow looks like.

```
.boxshadow{ -moz-box-shadow:4px 4px 4px  
4px rgb(190, 170, 171); -webkit-box-  
shadow:4px 4px 4px 4px rgb(190, 170, 171);  
box-shadow:4px 4px 4px 4px rgb(190, 170,  
171) }
```

Background

The CSS property to change the background color of an element to RYB 190, 170, 171 is called "background". The background property can be set on classes, ids or directly on the HTML element.

```
.background, #background, body{  
background: rgb(190, 170, 171) }
```

If only the background color should be changed can be used:

```
.background{ background-color: rgb(190,  
170, 171) }
```

This example shows the color as background, it is applied via the CSS property "background".

To optimize and compress your CSS code, you can use our [online CSS compressor and optimizer](#) based on csstidy. If you want to create a linear or radial gradient as background or border, check our [CSS Gradient Generator](#).

Hey! You found this booklet interesting? Support Converting Colors with the new Membership Option!

The pro membership hides all ads, plus gives you double the colors in the color bucket, and more awesome pro features!

[Learn more, Memberships starting at \\$2.50/m!](#)

**Follow me
on Twitter!**

@ConvertingColor