

Converting Colors

`RYB(191, 149, 141)`

Have a look what the booklet for
RYB(191, 149, 141) contains.

RYB(191, 149, 141)	3
<i>Conversions</i>	4
<i>Details</i>	6
<i>Harmonies</i>	11
<i>Previews</i>	23
<i>Color Blindness Simulation</i>	26
<i>CSS Examples</i>	29

Color

R_YB(191, 149, 141)

Conversions

Conversions Part 1

Format	Color
Hex	BF948D
RGB	191, 148, 141
RGB Percent	75%, 58%, 55%
CMY	0.2510, 0.4200, 0.4471
CMYK	0.00, 0.23, 0.26, 0.25
HSL	8°, 28%, 65%
HSV	8°, 26%, 75%
XYZ	36.8673, 34.1468, 29.8472
YIQ	160.0590, 27.8750, 6.9390

Conversions

Conversions Part 2

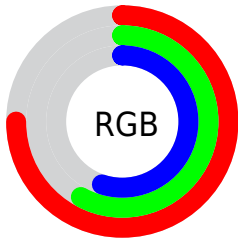
Format	Color
RYB	191, 149, 141
Decimal	12555405
CIELab	65.08, 15.17, 9.87
CIELCh	65, 18.096, 33.056
Yxy	34.1468, 0.3655, 0.3386
Android (android.graphics.Color)	4290745485 (0xFFBF948D)
YUV	160.0590, -9.3961, 27.1353
Hunter-Lab	58.4353, 10.3553, 10.6209

Details

The RYB color **191, 149, 141** is a light color, and the websafe version is hex **CC9999**. A complement of this color would be **141, 164, 191**, and the grayscale version is **160, 160, 160**.

A 20% lighter version of the original color is **248, 203, 195**, and **137, 98, 91** is the 20% darker color. If you saturate the color by 10%, you get **191, 132, 122**, and if you desaturate by 10%, it is **191, 165, 160**.

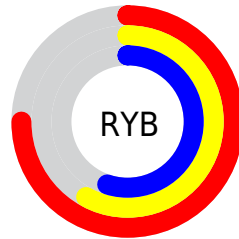
Distribution



Red (75%)

Green (58%)

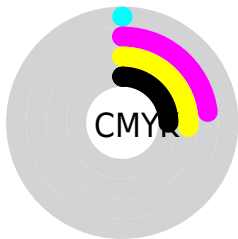
Blue (55%)



Red (75%)

Yellow (58%)

Blue (55%)

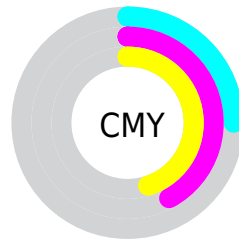


Cyan (0%)

Magenta (23%)

Yellow (26%)

Black (25%)



Cyan (25%)


Magenta (42%)

Yellow (45%)

Brightness & Saturation Gradients

These gradients show how the RYB color 191, 149, 141 changes by changing the brightness by 10 percent. The first figure shows a shift by +10% for each color and the second figure -10%.

Similar to the brightness gradients but the following saturation gradients show a change of the RYB color 191, 149, 141 by changing the saturation by 10% instead.


 191, 149, 141

255, 255, 255

 248, 203, 195


 255, 233, 222

 251, 255, 251


 191, 149, 141

 163, 123, 115

 137, 98, 91


 111, 74, 67


 85, 51, 45


 61, 30, 25


 39, 7, 0

 0, 0, 0

 191, 149, 141

 191, 132, 122

 191, 149, 141

 191, 165, 160

■ 191, 117, 103

■ 191, 181, 179

■ 191, 101, 84

■ 191, 194, 198

■ 191, 85, 65

■ 191, 203, 217

■ 191, 69, 46

■ 191, 212, 237

■ 191, 53, 26

■ 191, 221, 255

■ 191, 37, 7

■ 191, 223, 255

■ 191, 30, 0

Harmonies

Analogous

The Analogous color harmony consists of three colors that are next to each other on the color wheel.



190, 147, 157



191, 149, 141



183, 168, 130

Triad

The Triadic color harmony groups three colors that are evenly spaced from another and form a triangle on the color wheel.



191, 149, 141



133, 158, 166



142, 155, 190

Complementary

The Complementary color scheme is a pair of colors which are on the opposite of each other on the color wheel.



191, 149, 141



141, 164, 191

Split Complementary

Split-complementary colors differ from the complementary color scheme. The scheme consists of three colors, the original color and two neighbors of the complement color.



123, 148, 186



191, 149, 141



118, 145, 167

Square

The Square scheme is like the rectangle color scheme, but the four colors are evenly spaced on the color wheel.



191, 149, 141



131, 162, 142



114, 142, 175



163, 153, 185

Rectangle

The Rectangle color scheme consists of four colors that form a rectangle on the color wheel.



191, 149, 141



155, 174, 126



114, 142, 175



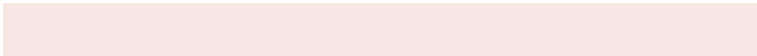
135, 153, 190

Sweetspot

The Sweet Spot groups the original color and five complimentary colors.



191, 149, 141



247, 230, 228



191, 141, 184



125, 114, 112



252, 252, 252



125, 125, 125

Same Dimension

The Same Dimension uses a secret algorithm to generate beautiful new colors.



191, 149, 141



247, 183, 171



169, 191, 141



94, 86, 85



158, 26, 0



31, 5, 0

Inverse Universe

The Inverse Universe completely reimagines the original color for something new.



141, 164, 191



171, 206, 247



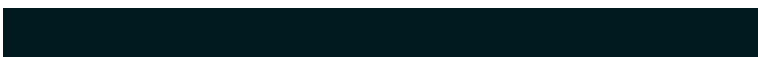
141, 154, 191



85, 89, 94



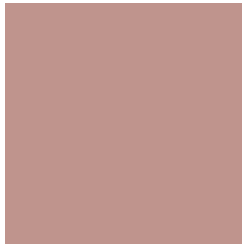
0, 73, 158



0, 14, 31

Previews

White Background



This preview shows how the RYB color 191, 149, 141 looks on a white background.

Color Contrast Check

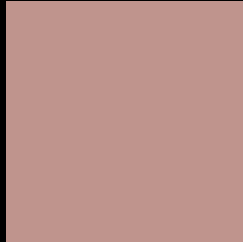
Large Text (above 18pt) WCAG AA × Fail

Any Text WCAG AA × Fail

Large Text (above 18pt) WCAG AAA × Fail

Any Text WCAG AAA × Fail

Black Background



This preview shows how the RYB color 191, 149, 141 looks on a black background.

Color Contrast Check

Large Text (above 18pt) WCAG AA ✓ Pass

Any Text WCAG AA ✓ Pass

Large Text (above 18pt) WCAG AAA ✓ Pass

Any Text WCAG AAA ✓ Pass

If you want to check with other color combinations, try the [Color Contrast Checker](#).

RYB 191, 149, 141 Background



This preview shows how black text looks on a background with the RYB color 191, 149, 141.



This preview shows how white text looks on a background with the RYB color 191, 149, 141.

Color Blindness Simulation

Color vision deficiency is a very complex topic, and I could not describe the different causes any better than Wikipedia does, so if you want to learn more, you should check out their [article about color blindness](#).

Dichromacy





Tritanopia
193, 146, 157

Trichromacy



Original Color

191, 149, 141

Protanomaly

174, 159, 144

Deuteranomaly

184, 155, 140

Tritanomaly

192, 147, 151

Monochromacy



Original Color

191, 149, 141

Achromatopsia

160, 160, 160

Achromatomaly

171, 157, 153

CSS Examples

Text

The CSS property to change the color of the text to RYB 191, 149, 141 is called "color". The color property can be set on classes, ids or directly on the HTML element.

This example shows how text in the color `rgb(191, 148, 141)` looks like.

```
.text, #text, p{  
    color:rgb(191, 148, 141)  
}
```

If you want to add a text shadow in that color use the text-shadow property, you can generate a text shadow directly with our [CSS Text Shadow Generator](#).

Here you see how black text with a 4 pixel rgb(191, 148, 141) colored shadow looks like.

```
.shadow{ text-shadow: 4px 4px 2px rgb(191, 148, 141) }
```

Border

The CSS property to change the border of an element to RYB 191, 149, 141 is called "border". The border property can be set on classes, ids or directly on the HTML element.

This example shows the color as border, it can be applied via the CSS property "border" or "border-color".

```
.border, #border, table{ border:4px solid rgb(191, 148, 141) }
```

If only the border color should be changed use the property `border-color`.

```
.border{ border-color:rgb(191, 148, 141) }
```

If you want to add a box shadow in that color use:

Here you see how a box with a 4 pixel `rgb(191, 148, 141)` colored shadow looks like.

```
.boxshadow{ -moz-box-shadow:4px 4px 4px  
4px rgb(191, 148, 141); -webkit-box-  
shadow:4px 4px 4px 4px rgb(191, 148, 141);  
box-shadow:4px 4px 4px 4px rgb(191, 148,  
141) }
```

Background

The CSS property to change the background color of an element to RYB 191, 149, 141 is called "background". The background property can be set on classes, ids or directly on the HTML element.

```
.background, #background, body{  
background: rgb(191, 148, 141) }
```

If only the background color should be changed can be used:

```
.background{ background-color: rgb(191,  
148, 141) }
```

This example shows the color as background, it is applied via the CSS property "background".

To optimize and compress your CSS code, you can use our [online CSS compressor and optimizer](#) based on csstidy. If you want to create a linear or radial gradient as background or border, check our [CSS Gradient Generator](#).

Hey! You found this booklet interesting? Support Converting Colors with the new Membership Option!

The pro membership hides all ads, plus gives you double the colors in the color bucket, and more awesome pro features!

[Learn more, Memberships starting at \\$2.50/m!](#)

**Follow me
on Twitter!**

@ConvertingColor