

Converting Colors

`RYB(192, 123, 118)`

Have a look what the booklet for
RYB(192, 123, 118) contains.

RYB(192, 123, 118)	3
<i>Conversions</i>	4
<i>Details</i>	6
<i>Harmonies</i>	11
<i>Previews</i>	23
<i>Color Blindness Simulation</i>	26
<i>CSS Examples</i>	29

Color

R_YB(192, 123, 118)

Conversions

Conversions Part 1

Format	Color
Hex	C07B76
RGB	192, 123, 118
RGB Percent	75%, 48%, 46%
CMY	0.2471, 0.5189, 0.5373
CMYK	0.00, 0.36, 0.39, 0.25
HSL	4°, 37%, 61%
HSV	4°, 39%, 75%
XYZ	32.0520, 26.6020, 20.5849
YIQ	143.0610, 42.7290, 13.0730

Conversions

Conversions Part 2

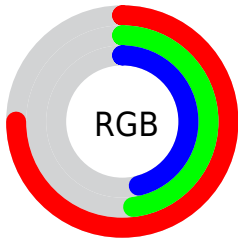
Format	Color
R _Y B	192, 123, 118
Decimal	12614518
CIE Lab	58.60, 26.45, 13.84
CIE LCh	59, 29.856, 27.618
Yxy	26.6020, 0.4045, 0.3357
Android (android.graphics.Color)	4290804598 (0xFFC07B76)
YUV	143.0610, -12.3551, 42.9195
Hunter-Lab	51.5771, 20.6668, 12.4408

Details

The RYB color **192, 123, 118** is a dark color, and the websafe version is hex **996666**. A complement of this color would be **118, 154, 192**, and the grayscale version is **143, 143, 143**.

A 20% lighter version of the original color is **250, 176, 170**, and **136, 73, 70** is the 20% darker color. If you saturate the color by 10%, you get **192, 105, 99**, and if you desaturate by 10%, it is **192, 141, 137**.

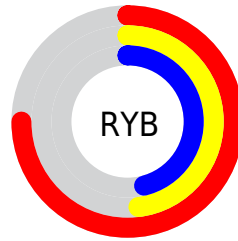
Distribution



Red (75%)

Green (48%)

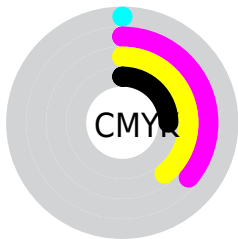
Blue (46%)



Red (75%)

Yellow (48%)

Blue (46%)

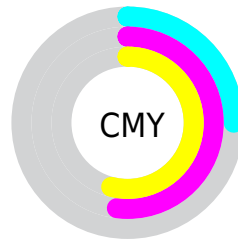


Cyan (0%)

Magenta (36%)

Yellow (39%)

Black (25%)



Cyan (25%)

Magenta (52%)

Yellow (54%)

Brightness & Saturation Gradients

These gradients show how the RYB color 192, 123, 118 changes by changing the brightness by 10 percent. The first figure shows a shift by +10% for each color and the second figure -10%.

Similar to the brightness gradients but the following saturation gradients show a change of the RYB color 192, 123, 118 by changing the saturation by 10% instead.

 192, 123, 118

255, 255, 255

 250, 176, 170

 255, 204, 197

 255, 234, 225

254, 255, 254

 192, 123, 118

 192, 105, 99

 192, 123, 118

 164, 97, 93

 136, 73, 70

 109, 49, 47

 83, 26, 27

 58, 3, 0

 34, 0, 1

 0, 0, 0


 192, 123, 118

 192, 141, 137

 192, 87, 80

 192, 159, 156

 192, 70, 60

 192, 177, 176

 192, 52, 41

 192, 194, 195

 192, 34, 22

 192, 203, 214

 192, 16, 3

 192, 212, 233

 192, 13, 0

 192, 221, 252

 192, 224, 255

Harmonies

Analogous

The Analogous color harmony consists of three colors that are next to each other on the color wheel.



189, 121, 144



192, 123, 118



181, 150, 98

Triad

The Triadic color harmony groups three colors that are evenly spaced from another and form a triangle on the color wheel.



192, 123, 118



103, 144, 152



101, 130, 193

Complementary

The Complementary color scheme is a pair of colors which are on the opposite of each other on the color wheel.



192, 123, 118



118, 154, 192

Split Complementary

Split-complementary colors differ from the complementary color scheme. The scheme consists of three colors, the original color and two neighbors of the complement color.



61, 113, 184



192, 123, 118



71, 118, 155

Square

The Square scheme is like the rectangle color scheme, but the four colors are evenly spaced on the color wheel.



192, 123, 118



94, 147, 107



47, 103, 164



141, 135, 187

Rectangle

The Rectangle color scheme consists of four colors that form a rectangle on the color wheel.



192, 123, 118



144, 168, 90



47, 103, 164



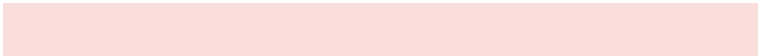
87, 125, 192

Sweetspot

The Sweet Spot groups the original color and five complimentary colors.



192, 123, 118



250, 222, 220



192, 118, 188



125, 109, 107



252, 252, 252



125, 125, 125

Same Dimension

The Same Dimension uses a secret algorithm to generate beautiful new colors.



192, 123, 118



250, 142, 135



178, 192, 118



97, 88, 87



161, 11, 0



33, 2, 0

Inverse Universe

The Inverse Universe completely reimagines the original color for something new.



118, 154, 192



135, 191, 250



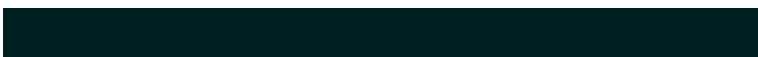
118, 141, 192



87, 92, 97



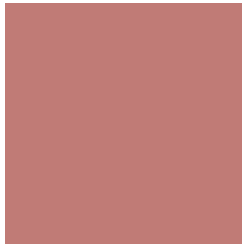
0, 78, 161



0, 16, 33

Previews

White Background



This preview shows how the RYB color 192, 123, 118 looks on a white background.

Color Contrast Check

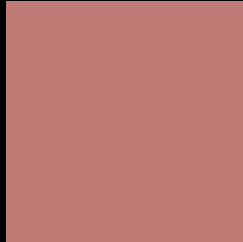
Large Text (above 18pt) WCAG AA ✓ Pass

Any Text WCAG AA ✗ Fail

Large Text (above 18pt) WCAG AAA ✗ Fail

Any Text WCAG AAA ✗ Fail

Black Background



This preview shows how the RYB color 192, 123, 118 looks on a black background.

Color Contrast Check

Large Text (above 18pt) WCAG AA ✓ Pass

Any Text WCAG AA ✓ Pass

Large Text (above 18pt) WCAG AAA ✓ Pass

Any Text WCAG AAA × Fail

If you want to check with other color combinations, try the [Color Contrast Checker](#).

RYB 192, 123, 118 Background



This preview shows how black text looks on a background with the RYB color 192, 123, 118.

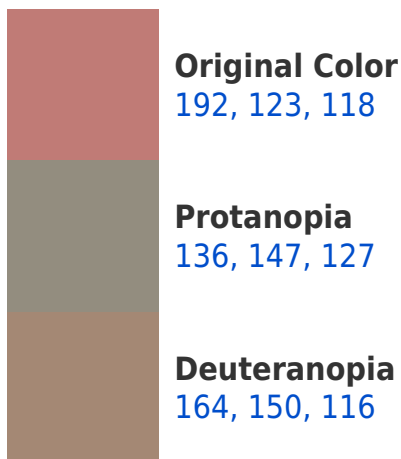


This preview shows how white text looks on a background with the RYB color 192, 123, 118.

Color Blindness Simulation

Color vision deficiency is a very complex topic, and I could not describe the different causes any better than Wikipedia does, so if you want to learn more, you should check out their [article about color blindness](#).

Dichromacy





Tritanopia
193, 121, 130

Trichromacy



Original Color
192, 123, 118

Protanomaly
163, 137, 124

Deuteranomaly
174, 136, 117

Tritanomaly
193, 122, 126

Monochromacy



Original Color
192, 123, 118

Achromatopsia
143, 143, 143

Achromatomaly
161, 136, 134

CSS Examples

Text

The CSS property to change the color of the text to RYB 192, 123, 118 is called "color". The color property can be set on classes, ids or directly on the HTML element.

This example shows how text in the color `rgb(192, 123, 118)` looks like.

```
.text, #text, p{  
    color:rgb(192, 123, 118)  
}
```

If you want to add a text shadow in that color use the text-shadow property, you can generate a text shadow directly with our [CSS Text Shadow Generator](#).

Here you see how black text with a 4 pixel rgb(192, 123, 118) colored shadow looks like.

```
.shadow{ text-shadow: 4px 4px 2px rgb(192, 123, 118) }
```

Border

The CSS property to change the border of an element to RYB 192, 123, 118 is called "border". The border property can be set on classes, ids or directly on the HTML element.

This example shows the color as border, it can be applied via the CSS property "border" or "border-color".

```
.border, #border, table{ border:4px solid rgb(192, 123, 118) }
```

If only the border color should be changed use the property `border-color`.

```
.border{ border-color:rgb(192, 123, 118) }
```

If you want to add a box shadow in that color use:

Here you see how a box with a 4 pixel `rgb(192, 123, 118)` colored shadow looks like.

```
.boxshadow{ -moz-box-shadow:4px 4px 4px  
4px rgb(192, 123, 118); -webkit-box-  
shadow:4px 4px 4px 4px rgb(192, 123, 118);  
box-shadow:4px 4px 4px 4px rgb(192, 123,  
118) }
```

Background

The CSS property to change the background color of an element to RYB 192, 123, 118 is called "background". The background property can be set on classes, ids or directly on the HTML element.

```
.background, #background, body{  
background: rgb(192, 123, 118) }
```

If only the background color should be changed can be used:

```
.background{ background-color: rgb(192,  
123, 118) }
```

This example shows the color as background, it is applied via the CSS property "background".

To optimize and compress your CSS code, you can use our [online CSS compressor and optimizer](#) based on csstidy. If you want to create a linear or radial gradient as background or border, check our [CSS Gradient Generator](#).

Hey! You found this booklet interesting? Support Converting Colors with the new Membership Option!

The pro membership hides all ads, plus gives you double the colors in the color bucket, and more awesome pro features!

[Learn more, Memberships starting at \\$2.50/m!](#)

**Follow me
on Twitter!**

@ConvertingColor