

Converting Colors

`RYB(192, 83, 133)`

Have a look what the booklet for
RYB(192, 83, 133) contains.

RYB(192, 83, 133)	3
<i>Conversions</i>	4
<i>Details</i>	6
<i>Harmonies</i>	11
<i>Previews</i>	23
<i>Color Blindness Simulation</i>	26
<i>CSS Examples</i>	29

Color

RYP(192, 83, 133)

Conversions

Conversions Part 1

Format	Color
Hex	C05385
RGB	192, 83, 133
RGB Percent	75%, 33%, 52%
CMY	0.2471, 0.6745, 0.4784
CMYK	0.00, 0.57, 0.31, 0.25
HSL	332°, 46%, 54%
HSV	332°, 57%, 75%
XYZ	29.0651, 19.0864, 24.3425
YIQ	121.2910, 48.9140, 38.6580

Conversions

Conversions Part 2

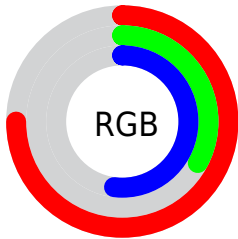
Format	Color
R_{YB}	192, 83, 133
Decimal	12604293
CIE _{Lab}	50.79, 48.98, -6.23
CIE _{LCh}	51, 49.374, 352.748
Yxy	19.0864, 0.4009, 0.2633
Android (android.graphics.Color)	4290794373 (0xFFC05385)
YUV	121.2910, 5.7725, 62.0118
Hunter-Lab	43.6880, 42.2999, -2.4541

Details

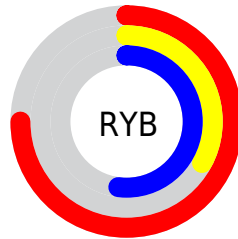
The RYB color **192, 83, 133** is a dark color, and the websafe version is hex **CC6699**. The color can be described as middle muted rose. A complement of this color would be **83, 154, 192**, and the grayscale version is **121, 121, 121**.

A 20% lighter version of the original color is **251, 137, 186**, and **135, 27, 84** is the 20% darker color. If you saturate the color by 10%, you get **192, 64, 123**, and if you desaturate by 10%, it is **192, 102, 143**.

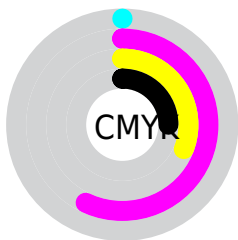
Distribution



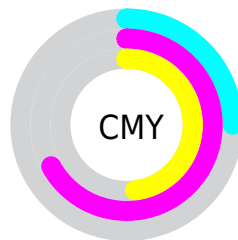
- Red (75%)
- Green (33%)
- Blue (52%)



- Red (75%)
- Yellow (33%)
- Blue (52%)



- Cyan (0%)
- Magenta (57%)
- Yellow (31%)
- Black (25%)



- Cyan (25%)
- Magenta (67%)
- Yellow (48%)

Brightness & Saturation Gradients

These gradients show how the RYB color 192, 83, 133 changes by changing the brightness by 10 percent. The first figure shows a shift by +10% for each color and the second figure -10%.

Similar to the brightness gradients but the following saturation gradients show a change of the RYB color 192, 83, 133 by changing the saturation by 10% instead.

 192, 83, 133

255, 255, 255

 251, 137, 186

 255, 164, 214

 255, 192, 242

 255, 221, 255

 255, 250, 255

 192, 83, 133

 163, 56, 108


 135, 27, 84

 107, 0, 60

 80, 0, 39

 56, 0, 18


 21, 0, 0

 0, 0, 0

 192, 83, 133

 192, 64, 123

 192, 83, 133

 192, 102, 143

■ 192, 45, 112

■ 192, 121, 154

■ 192, 25, 102

■ 192, 141, 164

■ 192, 6, 91

■ 192, 160, 175

■ 192, 0, 88

■ 192, 179, 185

■ 192, 196, 198

■ 192, 208, 217

■ 192, 221, 237

■ 192, 233, 255

Harmonies

Analogous

The Analogous color harmony consists of three colors that are next to each other on the color wheel.



162, 96, 172



192, 83, 133



197, 85, 91

Triad

The Triadic color harmony groups three colors that are evenly spaced from another and form a triangle on the color wheel.



192, 83, 133



36, 128, 52



0, 79, 187

Complementary

The Complementary color scheme is a pair of colors which are on the opposite of each other on the color wheel.



192, 83, 133



83, 154, 192

Split Complementary

Split-complementary colors differ from the complementary color scheme. The scheme consists of three colors, the original color and two neighbors of the complement color.



0, 73, 152



192, 83, 133



59, 130, 137

Square

The Square scheme is like the rectangle color scheme, but the four colors are evenly spaced on the color wheel.



192, 83, 133



84, 152, 31



0, 80, 141



0, 79, 204

Rectangle

The Rectangle color scheme consists of four colors that form a rectangle on the color wheel.



192, 83, 133



189, 101, 66



0, 80, 141



0, 78, 177

Sweetspot

The Sweet Spot groups the original color and five complimentary colors.



192, 83, 133



250, 207, 227



141, 83, 192



125, 100, 111



252, 252, 252



125, 125, 125

Same Dimension

The Same Dimension uses a secret algorithm to generate beautiful new colors.



192, 83, 133



250, 80, 158



192, 87, 83



97, 87, 92



161, 0, 74



33, 0, 15

Inverse Universe

The Inverse Universe completely reimagines the original color for something new.



192, 83, 133



250, 80, 158



83, 136, 192



97, 87, 92



161, 0, 74



33, 0, 15

Previews

White Background



This preview shows how the RYB color 192, 83, 133 looks on a white background.

Color Contrast Check

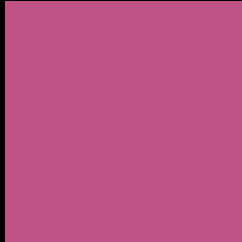
Large Text (above 18pt) WCAG AA ✓ Pass

Any Text WCAG AA ✗ Fail

Large Text (above 18pt) WCAG AAA ✗ Fail

Any Text WCAG AAA ✗ Fail

Black Background



This preview shows how the RYB color 192, 83, 133 looks on a black background.

Color Contrast Check

Large Text (above 18pt) WCAG AA ✓ Pass

Any Text WCAG AA ✓ Pass

Large Text (above 18pt) WCAG AAA ✓ Pass

Any Text WCAG AAA × Fail

If you want to check with other color combinations, try the [Color Contrast Checker](#).

RYB 192, 83, 133 Background



This preview shows how black text looks on a background with the RYB color 192, 83, 133.

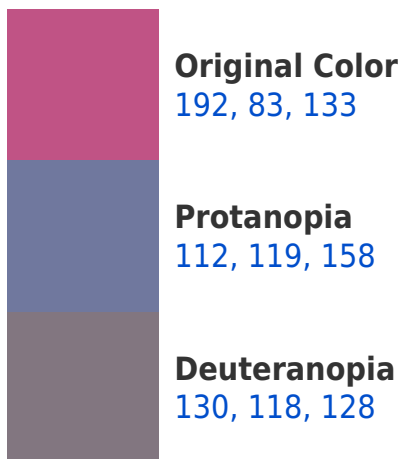


This preview shows how white text looks on a background with the RYB color 192, 83, 133.

Color Blindness Simulation

Color vision deficiency is a very complex topic, and I could not describe the different causes any better than Wikipedia does, so if you want to learn more, you should check out their [article about color blindness](#).

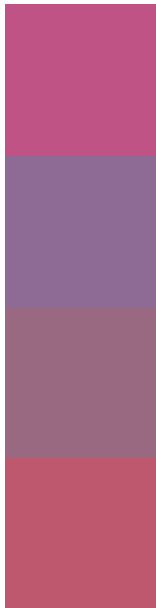
Dichromacy





Tritanopia
189, 91, 97

Trichromacy



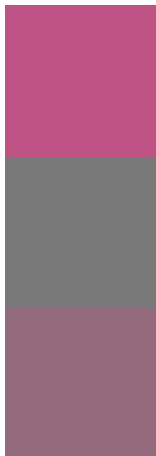
Original Color
192, 83, 133

Protanomaly
141, 107, 149

Deuteranomaly
153, 105, 130

Tritanomaly
190, 88, 110

Monochromacy



Original Color
192, 83, 133

Achromatopsia
121, 121, 121

Achromatomaly
147, 107, 125

CSS Examples

Text

The CSS property to change the color of the text to RYB 192, 83, 133 is called "color". The color property can be set on classes, ids or directly on the HTML element.

This example shows how text in the color `rgb(192, 83, 133)` looks like.

```
.text, #text, p{  
    color:rgb(192, 83, 133)  
}
```

If you want to add a text shadow in that color use the text-shadow property, you can generate a text shadow directly with our [CSS Text Shadow Generator](#).

Here you see how black text with a 4 pixel rgb(192, 83, 133) colored shadow looks like.

```
.shadow{ text-shadow: 4px 4px 2px rgb(192, 83, 133) }
```

Border

The CSS property to change the border of an element to RYB 192, 83, 133 is called "border". The border property can be set on classes, ids or directly on the HTML element.

This example shows the color as border, it can be applied via the CSS property "border" or "border-color".

```
.border, #border, table{ border:4px solid rgb(192, 83, 133) }
```

If only the border color should be changed use the property `border-color`.

```
.border{ border-color:rgb(192, 83, 133) }
```

If you want to add a box shadow in that color use:

Here you see how a box with a 4 pixel `rgb(192, 83, 133)` colored shadow looks like.

```
.boxshadow{ -moz-box-shadow:4px 4px 4px  
4px rgb(192, 83, 133); -webkit-box-  
shadow:4px 4px 4px 4px rgb(192, 83, 133);  
box-shadow:4px 4px 4px 4px rgb(192, 83,  
133) }
```

Background

The CSS property to change the background color of an element to RGB 192, 83, 133 is called "background".

The background property can be set on classes, ids or directly on the HTML element.

```
.background, #background, body{  
background: rgb(192, 83, 133) }
```

If only the background color should be changed can be used:

```
.background{ background-color: rgb(192, 83,  
133) }
```

This example shows the color as background, it is applied via the CSS property "background".

To optimize and compress your CSS code, you can use our [online CSS compressor and optimizer](#) based on csstidy. If you want to create a linear or radial gradient as background or border, check our [CSS Gradient Generator](#).

Hey! You found this booklet interesting? Support Converting Colors with the new Membership Option!

The pro membership hides all ads, plus gives you double the colors in the color bucket, and more awesome pro features!

[Learn more, Memberships starting at \\$2.50/m!](#)

**Follow me
on Twitter!**

@ConvertingColor