

Converting Colors

`RYB(193, 201, 119)`

Have a look what the booklet for
RYB(193, 201, 119) contains.

RYB(193, 201, 119)	3
<i>Conversions</i>	4
<i>Details</i>	6
<i>Harmonies</i>	11
<i>Previews</i>	23
<i>Color Blindness Simulation</i>	26
<i>CSS Examples</i>	29

Color

$\text{RYB}(193, 201, 119)$

Conversions

Conversions Part 1

Format	Color
Hex	C9A277
RGB	201, 162, 119
RGB Percent	79%, 64%, 47%
CMY	0.2118, 0.3643, 0.5333
CMYK	0.00, 0.19, 0.41, 0.21
HSL	32°, 43%, 63%
HSV	32°, 41%, 79%
XYZ	40.3556, 39.6262, 22.9744
YIQ	168.7590, 37.0470, -5.1050

Conversions

Conversions Part 2

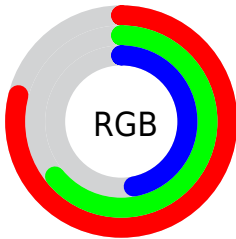
Format	Color
RYB	193, 201, 119
Decimal	13214327
CIELab	69.20, 8.55, 27.83
CIElCh	69, 29.117, 72.925
Yxy	39.6262, 0.3920, 0.3849
Android (android.graphics.Color)	4291404407 (0xFFC9A277)
YUV	168.7590, -24.5312, 28.2754
Hunter-Lab	62.9494, 4.2714, 22.4257

Details

The RYB color **193, 201, 119** is a light color, and the websafe version is hex **CC9966**. A complement of this color would be **119, 145, 201**, and the grayscale version is **169, 169, 169**.

A 20% lighter version of the original color is **242, 255, 172**, and **136, 145, 70** is the 20% darker color. If you saturate the color by 10%, you get **190, 201, 99**, and if you desaturate by 10%, it is **193, 201, 139**.

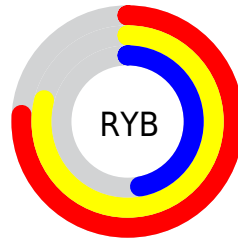
Distribution



Red (79%)

Green (64%)

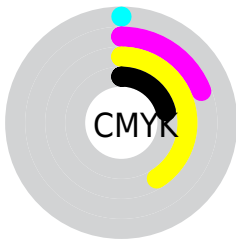
Blue (47%)



Red (76%)

Yellow (79%)

Blue (47%)

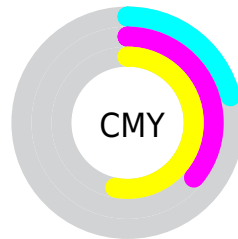


Cyan (0%)

Magenta (19%)

Yellow (41%)

Black (21%)



Cyan (21%)

Magenta (36%)

Yellow (53%)

Brightness & Saturation Gradients

These gradients show how the RYB color 193, 201, 119 changes by changing the brightness by 10 percent. The first figure shows a shift by +10% for each color and the second figure -10%.

Similar to the brightness gradients but the following saturation gradients show a change of the RYB color 193, 201, 119 by changing the saturation by 10% instead.

 193, 201, 119

255, 255, 255

 242, 255, 172

 211, 255, 199

 227, 255, 227

 193, 201, 119

 164, 173, 94

 132, 145, 70

 105, 118, 47

 76, 92, 25

 42, 67, 0


 43, 41, 0

 13, 0, 0

 0, 0, 0

 193, 201, 119

 193, 201, 119

 190, 201, 99

 193, 201, 139

 190, 201, 79

 197, 201, 159

 189, 201, 59

 197, 201, 179

 186, 201, 39

 201, 201, 199

 184, 201, 18

 201, 207, 220

 180, 201, 0

 201, 213, 240

 201, 219, 255

 201, 223, 255

 201, 226, 255

Harmonies

Analogous

The Analogous color harmony consists of three colors that are next to each other on the color wheel.



217, 160, 134



193, 201, 119



122, 176, 117

Triad

The Triadic color harmony groups three colors that are evenly spaced from another and form a triangle on the color wheel.



193, 201, 119



91, 139, 184



187, 158, 208

Complementary

The Complementary color scheme is a pair of colors which are on the opposite of each other on the color wheel.



193, 201, 119



119, 145, 201

Split Complementary

Split-complementary colors differ from the complementary color scheme. The scheme consists of three colors, the original color and two neighbors of the complement color.



152, 165, 220



193, 201, 119



87, 139, 204

Square

The Square scheme is like the rectangle color scheme, but the four colors are evenly spaced on the color wheel.



193, 201, 119



116, 158, 182



113, 153, 219



212, 151, 185

Rectangle

The Rectangle color scheme consists of four colors that form a rectangle on the color wheel.



193, 201, 119



124, 176, 143



113, 153, 219



176, 161, 213

Sweetspot

The Sweet Spot groups the original color and five complimentary colors.



193, 201, 119



253, 255, 224



201, 119, 159



128, 128, 110



0, 0, 0



128, 128, 128

Same Dimension

The Same Dimension uses a secret algorithm to generate beautiful new colors.



193, 201, 119



242, 255, 130



119, 201, 120



97, 99, 90



146, 163, 0



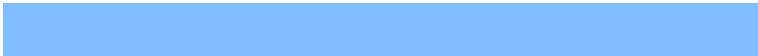
32, 36, 0

Inverse Universe

The Inverse Universe completely reimagines the original color for something new.



119, 145, 201



130, 170, 255



120, 119, 201



90, 93, 99



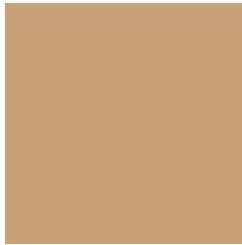
0, 52, 163



0, 12, 36

Previews

White Background



This preview shows how the RYB color 193, 201, 119 looks on a white background.

Color Contrast Check

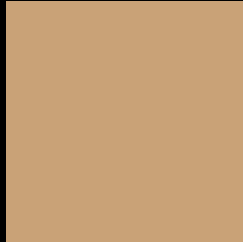
Large Text (above 18pt) WCAG AA × Fail

Any Text WCAG AA × Fail

Large Text (above 18pt) WCAG AAA × Fail

Any Text WCAG AAA × Fail

Black Background



This preview shows how the RYB color 193, 201, 119 looks on a black background.

Color Contrast Check

Large Text (above 18pt) WCAG AA ✓ Pass

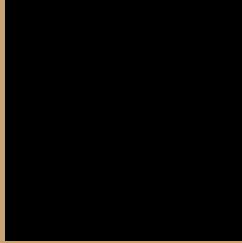
Any Text WCAG AA ✓ Pass

Large Text (above 18pt) WCAG AAA ✓ Pass

Any Text WCAG AAA ✓ Pass

If you want to check with other color combinations, try the [Color Contrast Checker](#).

RYB 193, 201, 119 Background



This preview shows how black text looks on a background with the RYB color 193, 201, 119.



This preview shows how white text looks on a background with the RYB color 193, 201, 119.

Color Blindness Simulation

Color vision deficiency is a very complex topic, and I could not describe the different causes any better than Wikipedia does, so if you want to learn more, you should check out their [article about color blindness](#).

Dichromacy



Original Color
193, 201, 119

Protanopia
139, 182, 122

Deuteranopia
193, 201, 119



Tritanopia
206, 156, 168

Trichromacy



Original Color
193, 201, 119

Protanomaly
156, 189, 121

Deuteranomaly
193, 201, 119

Tritanomaly
204, 159, 150

Monochromacy



Original Color
193, 201, 119

Achromatopsia
169, 169, 169

Achromatomaly
181, 181, 151

CSS Examples

Text

The CSS property to change the color of the text to RYB 193, 201, 119 is called "color". The color property can be set on classes, ids or directly on the HTML element.

This example shows how text in the color `rgb(201, 162, 119)` looks like.

```
.text, #text, p{  
    color:rgb(201, 162, 119)  
}
```

If you want to add a text shadow in that color use the text-shadow property, you can generate a text shadow directly with our [CSS Text Shadow Generator](#).

Here you see how black text with a 4 pixel rgb(201, 162, 119) colored shadow looks like.

```
.shadow{ text-shadow: 4px 4px 2px rgb(201, 162, 119) }
```

Border

The CSS property to change the border of an element to RYB 193, 201, 119 is called "border". The border property can be set on classes, ids or directly on the HTML element.

This example shows the color as border, it can be applied via the CSS property "border" or "border-color".

```
.border, #border, table{ border:4px solid rgb(201, 162, 119) }
```

If only the border color should be changed use the property `border-color`.

```
.border{ border-color:rgb(201, 162, 119) }
```

If you want to add a box shadow in that color use:

Here you see how a box with a 4 pixel `rgb(201, 162, 119)` colored shadow looks like.

```
.boxshadow{ -moz-box-shadow:4px 4px 4px  
4px rgb(201, 162, 119); -webkit-box-  
shadow:4px 4px 4px 4px rgb(201, 162, 119);  
box-shadow:4px 4px 4px 4px rgb(201, 162,  
119) }
```

Background

The CSS property to change the background color of an element to RYB 193, 201, 119 is called "background". The background property can be set on classes, ids or directly on the HTML element.

```
.background, #background, body{  
background: rgb(201, 162, 119) }
```

If only the background color should be changed can be used:

```
.background{ background-color: rgb(201,  
162, 119) }
```

This example shows the color as background, it is applied via the CSS property "background".

To optimize and compress your CSS code, you can use our [online CSS compressor and optimizer](#) based on csstidy. If you want to create a linear or radial gradient as background or border, check our [CSS Gradient Generator](#).

Hey! You found this booklet interesting? Support Converting Colors with the new Membership Option!

The pro membership hides all ads, plus gives you double the colors in the color bucket, and more awesome pro features!

[Learn more, Memberships starting at \\$2.50/m!](#)

**Follow me
on Twitter!**

@ConvertingColor