

Converting Colors

`RYB(194, 144, 145)`

Have a look what the booklet for RYB(194, 144, 145) contains.

RYB(194, 144, 145)	3
<i>Conversions</i>	4
<i>Details</i>	6
<i>Harmonies</i>	11
<i>Previews</i>	23
<i>Color Blindness Simulation</i>	26
<i>CSS Examples</i>	29

Color

R_YB(194, 144, 145)

Conversions

Conversions Part 1

Format	Color
Hex	C29091
RGB	194, 144, 145
RGB Percent	76%, 56%, 57%
CMY	0.2392, 0.4353, 0.4314
CMYK	0.00, 0.26, 0.25, 0.24
HSL	359°, 29%, 66%
HSV	359°, 26%, 76%
XYZ	37.3322, 33.4602, 31.2789
YIQ	159.0640, 29.4790, 10.9110

Conversions

Conversions Part 2

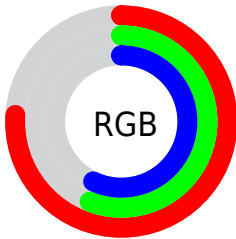
Format	Color
RYB	194, 144, 145
Decimal	12750993
CIELab	64.53, 19.05, 6.88
CIELCh	65, 20.257, 19.862
Yxy	33.4602, 0.3657, 0.3278
Android (android.graphics.Color)	4290941073 (0xFFC29091)
YUV	159.0640, -6.9336, 30.6389
Hunter-Lab	57.8448, 13.9731, 8.4310

Details

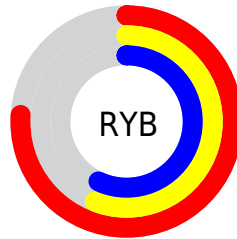
The RYB color **194, 144, 145** is a light color, and the websafe version is hex **CC9999**. A complement of this color would be **144, 169, 194**, and the grayscale version is **159, 159, 159**.

A 20% lighter version of the original color is **251, 198, 199**, and **139, 93, 95** is the 20% darker color. If you saturate the color by 10%, you get **194, 125, 126**, and if you desaturate by 10%, it is **194, 163, 164**.

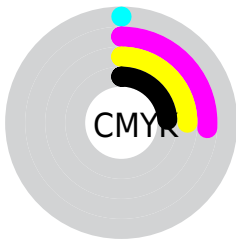
Distribution



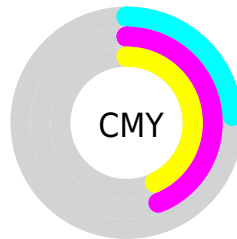
- Red (76%)
- Green (56%)
- Blue (57%)



- Red (76%)
- Yellow (56%)
- Blue (57%)



- Cyan (0%)
- Magenta (26%)
- Yellow (25%)
- Black (24%)




- Cyan (24%)
- Magenta (44%)
- Yellow (43%)


Brightness & Saturation Gradients

These gradients show how the RYB color 194, 144, 145 changes by changing the brightness by 10 percent. The first figure shows a shift by +10% for each color and the second figure -10%.

Similar to the brightness gradients but the following saturation gradients show a change of the RYB color 194, 144, 145 by changing the saturation by 10% instead.


 194, 144, 145

255, 255, 255


 251, 198, 199

 255, 226, 227

 194, 144, 145

 166, 118, 119

 139, 93, 95


 113, 69, 71


 88, 46, 49


 63, 25, 28


 41, 1, 1


 0, 0, 0

 194, 144, 145

 194, 125, 126


 194, 144, 145

 194, 163, 164

 194, 105, 107

 194, 183, 183

 194, 86, 88

 194, 198, 202

 194, 66, 69

 194, 208, 222

 194, 47, 50

 194, 218, 241

 194, 28, 31

 194, 225, 255

 194, 8, 12

 194, 0, 4

Harmonies

Analogous

The Analogous color harmony consists of three colors that are next to each other on the color wheel.



189, 144, 163



194, 144, 145



189, 156, 130

Triad

The Triadic color harmony groups three colors that are evenly spaced from another and form a triangle on the color wheel.



194, 144, 145



133, 164, 160



127, 149, 192

Complementary

The Complementary color scheme is a pair of colors which are on the opposite of each other on the color wheel.



194, 144, 145



144, 169, 194

Split Complementary

Split-complementary colors differ from the complementary color scheme. The scheme consists of three colors, the original color and two neighbors of the complement color.



110, 141, 183



194, 144, 145



118, 147, 166

Square

The Square scheme is like the rectangle color scheme, but the four colors are evenly spaced on the color wheel.



194, 144, 145



122, 159, 124



107, 137, 168



151, 154, 190

Rectangle

The Rectangle color scheme consists of four colors that form a rectangle on the color wheel.



194, 144, 145



181, 177, 123



107, 137, 168



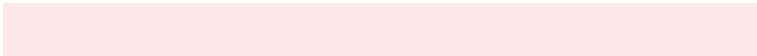
120, 146, 190

Sweetspot

The Sweet Spot groups the original color and five complimentary colors.



194, 144, 145



252, 232, 233



192, 144, 194



128, 115, 115



0, 0, 0



128, 128, 128

Same Dimension

The Same Dimension uses a secret algorithm to generate beautiful new colors.



194, 144, 145



252, 174, 176



194, 187, 144



97, 87, 87



161, 0, 3



33, 0, 1

Inverse Universe

The Inverse Universe completely reimagines the original color for something new.



194, 144, 145



252, 174, 176



144, 162, 194



97, 87, 87



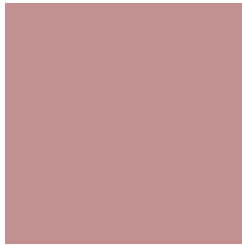
161, 0, 3



33, 0, 1

Previews

White Background



This preview shows how the RYB color 194, 144, 145 looks on a white background.

Color Contrast Check

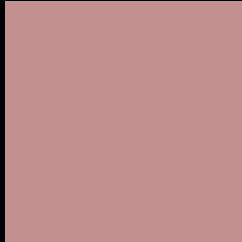
Large Text (above 18pt) WCAG AA × Fail

Any Text WCAG AA × Fail

Large Text (above 18pt) WCAG AAA × Fail

Any Text WCAG AAA × Fail

Black Background



This preview shows how the RYB color 194, 144, 145 looks on a black background.

Color Contrast Check

Large Text (above 18pt) WCAG AA ✓ Pass

Any Text WCAG AA ✓ Pass

Large Text (above 18pt) WCAG AAA ✓ Pass

Any Text WCAG AAA ✓ Pass

If you want to check with other color combinations, try the [Color Contrast Checker](#).

RYB 194, 144, 145 Background



This preview shows how black text looks on a background with the RYB color 194, 144, 145.



This preview shows how white text looks on a background with the RYB color 194, 144, 145.

Color Blindness Simulation

Color vision deficiency is a very complex topic, and I could not describe the different causes any better than Wikipedia does, so if you want to learn more, you should check out their [article about color blindness](#).


Dichromacy



Original Color
194, 144, 145

Protanopia
161, 159, 152

Deuteranopia
177, 153, 144



Tritanopia
195, 143, 154

Trichromacy



Original Color

194, 144, 145

Protanomaly

173, 152, 149

Deuteranomaly

183, 148, 144

Tritanomaly

195, 143, 151

Monochromacy



Original Color

194, 144, 145

Achromatopsia

159, 159, 159

Achromatomaly

172, 154, 154

CSS Examples

Text

The CSS property to change the color of the text to RYB 194, 144, 145 is called "color". The color property can be set on classes, ids or directly on the HTML element.

This example shows how text in the color `rgb(194, 144, 145)` looks like.

```
.text, #text, p{  
    color:rgb(194, 144, 145)  
}
```

If you want to add a text shadow in that color use the text-shadow property, you can generate a text shadow directly with our [CSS Text Shadow Generator](#).

Here you see how black text with a 4 pixel rgb(194, 144, 145) colored shadow looks like.

```
.shadow{ text-shadow: 4px 4px 2px rgb(194, 144, 145) }
```

Border

The CSS property to change the border of an element to RYB 194, 144, 145 is called "border". The border property can be set on classes, ids or directly on the HTML element.

This example shows the color as border, it can be applied via the CSS property "border" or "border-color".

```
.border, #border, table{ border:4px solid rgb(194, 144, 145) }
```

If only the border color should be changed use the property `border-color`.

```
.border{ border-color:rgb(194, 144, 145) }
```

If you want to add a box shadow in that color use:

Here you see how a box with a 4 pixel `rgb(194, 144, 145)` colored shadow looks like.

```
.boxshadow{ -moz-box-shadow:4px 4px 4px  
4px rgb(194, 144, 145); -webkit-box-  
shadow:4px 4px 4px 4px rgb(194, 144, 145);  
box-shadow:4px 4px 4px 4px rgb(194, 144,  
145) }
```

Background

The CSS property to change the background color of an element to RYB 194, 144, 145 is called "background". The background property can be set on classes, ids or directly on the HTML element.

```
.background, #background, body{  
background: rgb(194, 144, 145) }
```

If only the background color should be changed can be used:

```
.background{ background-color: rgb(194,  
144, 145) }
```

This example shows the color as background, it is applied via the CSS property "background".

To optimize and compress your CSS code, you can use our [online CSS compressor and optimizer](#) based on csstidy. If you want to create a linear or radial gradient as background or border, check our [CSS Gradient Generator](#).

Hey! You found this booklet interesting? Support Converting Colors with the new Membership Option!

The pro membership hides all ads, plus gives you double the colors in the color bucket, and more awesome pro features!

[Learn more, Memberships starting at \\$2.50/m!](#)

**Follow me
on Twitter!**

@ConvertingColor