

Converting Colors

`RYB(195, 147, 140)`

Have a look what the booklet for
RYB(195, 147, 140) contains.

RYB(195, 147, 140)	3
<i>Conversions</i>	4
<i>Details</i>	6
<i>Harmonies</i>	11
<i>Previews</i>	23
<i>Color Blindness Simulation</i>	26
<i>CSS Examples</i>	29

Color

R_YB(195, 147, 140)

Conversions

Conversions Part 1

Format	Color
Hex	C3928C
RGB	195, 146, 140
RGB Percent	76%, 57%, 55%
CMY	0.2353, 0.4266, 0.4510
CMYK	0.00, 0.25, 0.28, 0.24
HSL	7°, 31%, 66%
HSV	7°, 28%, 76%
XYZ	37.5505, 34.1180, 29.4173
YIQ	159.9670, 31.1300, 8.5220

Conversions

Conversions Part 2

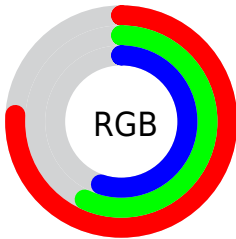
Format	Color
R _Y B	195, 147, 140
Decimal	12817036
CIE Lab	65.06, 17.50, 10.46
CIE LCh	65, 20.391, 30.857
Yxy	34.1180, 0.3715, 0.3375
Android (android.graphics.Color)	4291007116 (0xFFC3928C)
YUV	159.9670, -9.8437, 30.7239
Hunter-Lab	58.4106, 12.5340, 11.0273

Details

The RYB color **195, 147, 140** is a light color, and the websafe version is hex **CC9999**. A complement of this color would be **140, 166, 195**, and the grayscale version is **160, 160, 160**.

A 20% lighter version of the original color is **252, 201, 194**, and **140, 96, 90** is the 20% darker color. If you saturate the color by 10%, you get **195, 130, 121**, and if you desaturate by 10%, it is **195, 165, 160**.

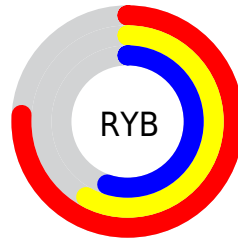
Distribution



Red (76%)

Green (57%)

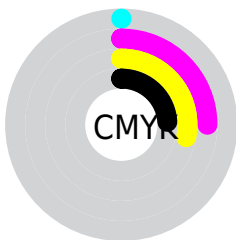
Blue (55%)



Red (76%)

Yellow (58%)

Blue (55%)

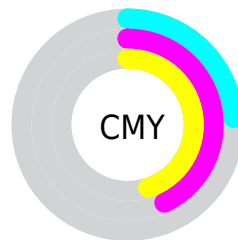


Cyan (0%)

Magenta (25%)

Yellow (28%)

Black (24%)



Cyan (24%)

Magenta (43%)

Yellow (45%)

Brightness & Saturation Gradients

These gradients show how the RYB color 195, 147, 140 changes by changing the brightness by 10 percent. The first figure shows a shift by +10% for each color and the second figure -10%.

Similar to the brightness gradients but the following saturation gradients show a change of the RYB color 195, 147, 140 by changing the saturation by 10% instead.

 195, 147, 140


255, 255, 255

 252, 201, 194

 255, 230, 221


 250, 255, 250

 195, 147, 140

 167, 121, 115

 140, 96, 90

 114, 71, 67

 88, 50, 44

 64, 27, 24


 42, 4, 0

 0, 0, 0

 195, 147, 140

 195, 130, 121

 195, 147, 140

 195, 165, 160

■ 195, 113, 101

■ 195, 181, 179

■ 195, 95, 82

■ 195, 197, 199

■ 195, 79, 62

■ 195, 206, 218

■ 195, 62, 43

■ 195, 215, 238

■ 195, 44, 23

■ 195, 224, 255

■ 195, 28, 4

■ 195, 225, 255

■ 195, 25, 0

Harmonies

Analogous

The Analogous color harmony consists of three colors that are next to each other on the color wheel.



194, 145, 158



195, 147, 140



187, 167, 127

Triad

The Triadic color harmony groups three colors that are evenly spaced from another and form a triangle on the color wheel.



195, 147, 140



131, 159, 166



137, 153, 194

Complementary

The Complementary color scheme is a pair of colors which are on the opposite of each other on the color wheel.



195, 147, 140



140, 166, 195

Split Complementary

Split-complementary colors differ from the complementary color scheme. The scheme consists of three colors, the original color and two neighbors of the complement color.



116, 145, 189



195, 147, 140



113, 143, 168

Square

The Square scheme is like the rectangle color scheme, but the four colors are evenly spaced on the color wheel.



195, 147, 140



126, 162, 137



107, 139, 176



162, 153, 189

Rectangle

The Rectangle color scheme consists of four colors that form a rectangle on the color wheel.



195, 147, 140



159, 177, 122



107, 139, 176



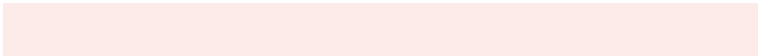
129, 150, 193

Sweetspot

The Sweet Spot groups the original color and five complimentary colors.



195, 147, 140



252, 236, 232



195, 140, 190



128, 116, 115



0, 0, 0



128, 128, 128

Same Dimension

The Same Dimension uses a secret algorithm to generate beautiful new colors.



195, 147, 140



252, 177, 167



177, 195, 140



97, 88, 87



161, 20, 0



33, 5, 0

Inverse Universe

The Inverse Universe completely reimagines the original color for something new.



140, 166, 195



167, 207, 252



140, 156, 195



87, 92, 97



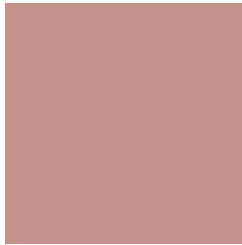
0, 76, 161



0, 15, 33

Previews

White Background



This preview shows how the RYB color 195, 147, 140 looks on a white background.

Color Contrast Check

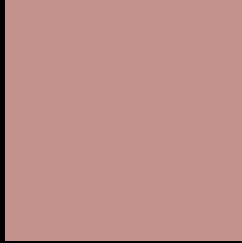
Large Text (above 18pt) WCAG AA × Fail

Any Text WCAG AA × Fail

Large Text (above 18pt) WCAG AAA × Fail

Any Text WCAG AAA × Fail

Black Background



This preview shows how the RYB color 195, 147, 140 looks on a black background.

Color Contrast Check

Large Text (above 18pt) WCAG AA ✓ Pass

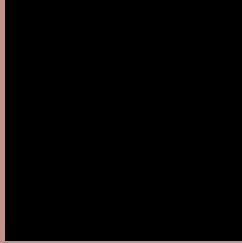
Any Text WCAG AA ✓ Pass

Large Text (above 18pt) WCAG AAA ✓ Pass

Any Text WCAG AAA ✓ Pass

If you want to check with other color combinations, try the [Color Contrast Checker](#).

RYB 195, 147, 140 Background



This preview shows how black text looks on a background with the RYB color 195, 147, 140.

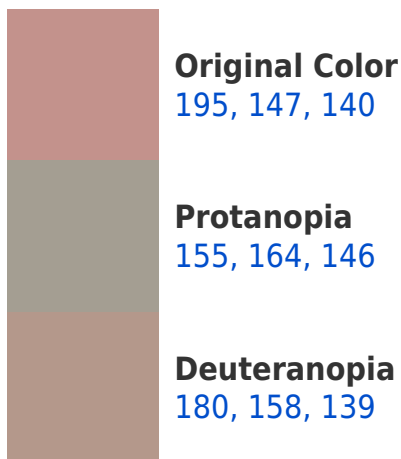


This preview shows how white text looks on a background with the RYB color 195, 147, 140.

Color Blindness Simulation

Color vision deficiency is a very complex topic, and I could not describe the different causes any better than Wikipedia does, so if you want to learn more, you should check out their [article about color blindness](#).

Dichromacy





Tritanopia
197, 144, 155

Trichromacy



Original Color

195, 147, 140

Protanomaly

175, 159, 144

Deuteranomaly

185, 153, 139

Tritanomaly

196, 145, 150

Monochromacy



Original Color

195, 147, 140

Achromatopsia

160, 160, 160

Achromatomaly

173, 155, 153

CSS Examples

Text

The CSS property to change the color of the text to RYB 195, 147, 140 is called "color". The color property can be set on classes, ids or directly on the HTML element.

This example shows how text in the color `rgb(195, 146, 140)` looks like.

```
.text, #text, p{  
    color:rgb(195, 146, 140)  
}
```

If you want to add a text shadow in that color use the text-shadow property, you can generate a text shadow directly with our [CSS Text Shadow Generator](#).

Here you see how black text with a 4 pixel rgb(195, 146, 140) colored shadow looks like.

```
.shadow{ text-shadow: 4px 4px 2px rgb(195, 146, 140) }
```

Border

The CSS property to change the border of an element to RYB 195, 147, 140 is called "border". The border property can be set on classes, ids or directly on the HTML element.

This example shows the color as border, it can be applied via the CSS property "border" or "border-color".

```
.border, #border, table{ border:4px solid rgb(195, 146, 140) }
```

If only the border color should be changed use the property border-color.

```
.border{ border-color:rgb(195, 146, 140) }
```

If you want to add a box shadow in that color use:

Here you see how a box with a 4 pixel rgb(195, 146, 140) colored shadow looks like.

```
.boxshadow{ -moz-box-shadow:4px 4px 4px  
4px rgb(195, 146, 140); -webkit-box-  
shadow:4px 4px 4px 4px rgb(195, 146, 140);  
box-shadow:4px 4px 4px 4px rgb(195, 146,  
140) }
```

Background

The CSS property to change the background color of an element to RGB 195, 147, 140 is called "background". The background property can be set on classes, ids or directly on the HTML element.

```
.background, #background, body{  
background: rgb(195, 146, 140) }
```

If only the background color should be changed can be used:

```
.background{ background-color: rgb(195,  
146, 140) }
```

This example shows the color as background, it is applied via the CSS property "background".

To optimize and compress your CSS code, you can use our [online CSS compressor and optimizer](#) based on csstidy. If you want to create a linear or radial gradient as background or border, check our [CSS Gradient Generator](#).

Hey! You found this booklet interesting? Support Converting Colors with the new Membership Option!

The pro membership hides all ads, plus gives you double the colors in the color bucket, and more awesome pro features!

[Learn more, Memberships starting at \\$2.50/m!](#)

**Follow me
on Twitter!**

@ConvertingColor