

Converting Colors

`RYB(195, 160, 158)`

Have a look what the booklet for
RYB(195, 160, 158) contains.

RYB(195, 160, 158)	3
<i>Conversions</i>	4
<i>Details</i>	6
<i>Harmonies</i>	11
<i>Previews</i>	23
<i>Color Blindness Simulation</i>	26
<i>CSS Examples</i>	29

Color

R_YB(195, 160, 158)

Conversions

Conversions Part 1

Format	Color
Hex	C3A09E
RGB	195, 160, 158
RGB Percent	76%, 63%, 62%
CMY	0.2353, 0.3730, 0.3804
CMYK	0.00, 0.18, 0.19, 0.24
HSL	3°, 24%, 69%
HSV	3°, 19%, 76%
XYZ	41.2303, 39.1768, 37.7366
YIQ	170.2370, 21.5020, 6.7980

Conversions

Conversions Part 2

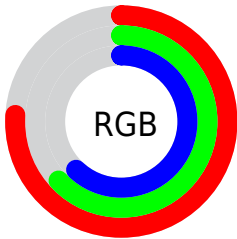
Format	Color
RYB	195, 160, 158
Decimal	12820638
CIELab	68.88, 12.64, 5.86
CIELCh	69, 13.930, 24.868
Yxy	39.1768, 0.3490, 0.3316
Android (android.graphics.Color)	4291010718 (0xFFC3A09E)
YUV	170.2370, -6.0328, 21.7172
Hunter-Lab	62.5914, 8.0469, 8.0678

Details

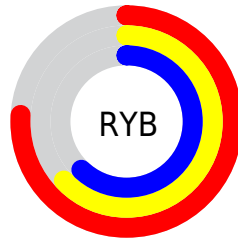
The RYB color **195, 160, 158** is a light color, and the websafe version is hex **CC9999**. A complement of this color would be **158, 176, 195**, and the grayscale version is **170, 170, 170**.

A 20% lighter version of the original color is **252, 215, 213**, and **141, 108, 107** is the 20% darker color. If you saturate the color by 10%, you get **195, 141, 139**, and if you desaturate by 10%, it is **195, 178, 178**.

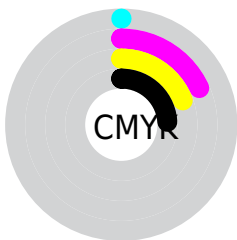
Distribution



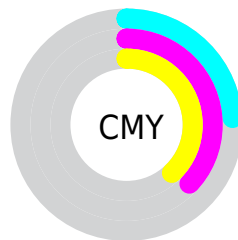
- Red (76%)
- Green (63%)
- Blue (62%)



- Red (76%)
- Yellow (63%)
- Blue (62%)



- Cyan (0%)
- Magenta (18%)
- Yellow (19%)
- Black (24%)



- Cyan (24%)
- Magenta (37%)
- Yellow (38%)

Brightness & Saturation Gradients

These gradients show how the RYB color 195, 160, 158 changes by changing the brightness by 10 percent. The first figure shows a shift by +10% for each color and the second figure -10%.

Similar to the brightness gradients but the following saturation gradients show a change of the RYB color 195, 160, 158 by changing the saturation by 10% instead.

 195, 160, 158


255, 255, 255


 252, 215, 213

 255, 243, 241

 195, 160, 158


 168, 134, 132

 141, 108, 107

 115, 84, 83

 90, 61, 60


 66, 39, 38

 43, 18, 17

 18, 0, 0

 0, 0, 0

 195, 160, 158

 195, 160, 158

 195, 141, 139

 195, 178, 178

 195, 123, 119

 195, 196, 197

 195, 104, 100

 195, 205, 217

 195, 86, 80

 195, 215, 236

 195, 67, 61

 195, 224, 255

 195, 49, 41

 195, 225, 255

 195, 30, 22

 195, 13, 2

 195, 11, 0

Harmonies

Analogous

The Analogous color harmony consists of three colors that are next to each other on the color wheel.



192, 160, 171



195, 160, 158



191, 169, 148

Triad

The Triadic color harmony groups three colors that are evenly spaced from another and form a triangle on the color wheel.



195, 160, 158



152, 173, 174



152, 165, 193

Complementary

The Complementary color scheme is a pair of colors which are on the opposite of each other on the color wheel.



195, 160, 158



158, 176, 195

Split Complementary

Split-complementary colors differ from the complementary color scheme. The scheme consists of three colors, the original color and two neighbors of the complement color.



140, 160, 188



195, 160, 158



141, 161, 175

Square

The Square scheme is like the rectangle color scheme, but the four colors are evenly spaced on the color wheel.



195, 160, 158



145, 171, 149



136, 156, 178



168, 166, 191

Rectangle

The Rectangle color scheme consists of four colors that form a rectangle on the color wheel.



195, 160, 158



180, 184, 144



136, 156, 178



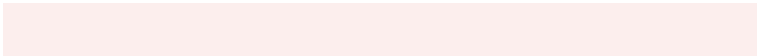
147, 163, 192

Sweetspot

The Sweet Spot groups the original color and five complimentary colors.



195, 160, 158



252, 238, 237



195, 158, 193



128, 119, 119



0, 0, 0



128, 128, 128

Same Dimension

The Same Dimension uses a secret algorithm to generate beautiful new colors.



195, 160, 158



252, 197, 194



189, 195, 158



97, 88, 87



161, 8, 0



33, 2, 0

Inverse Universe

The Inverse Universe completely reimagines the original color for something new.



158, 176, 195



194, 222, 252



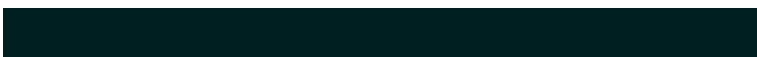
158, 170, 195



87, 92, 97



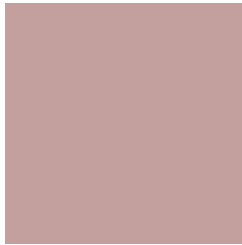
0, 78, 161



0, 16, 33

Previews

White Background



This preview shows how the RYB color 195, 160, 158 looks on a white background.

Color Contrast Check

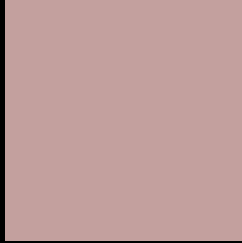
Large Text (above 18pt) WCAG AA × Fail

Any Text WCAG AA × Fail

Large Text (above 18pt) WCAG AAA × Fail

Any Text WCAG AAA × Fail

Black Background



This preview shows how the RYB color 195, 160, 158 looks on a black background.

Color Contrast Check

Large Text (above 18pt) WCAG AA ✓ Pass

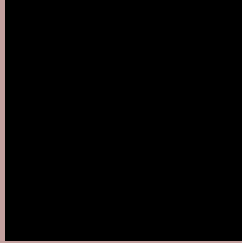
Any Text WCAG AA ✓ Pass

Large Text (above 18pt) WCAG AAA ✓ Pass

Any Text WCAG AAA ✓ Pass

If you want to check with other color combinations, try the [Color Contrast Checker](#).

RYB 195, 160, 158 Background



This preview shows how black text looks on a background with the RYB color 195, 160, 158.



This preview shows how white text looks on a background with the RYB color 195, 160, 158.

Color Blindness Simulation

Color vision deficiency is a very complex topic, and I could not describe the different causes any better than Wikipedia does, so if you want to learn more, you should check out their [article about color blindness](#).

Dichromacy



Original Color
195, 160, 158

Protanopia
171, 173, 162

Deuteranopia
189, 163, 158



Tritanopia
196, 158, 170

Trichromacy



Original Color

195, 160, 158

Protanomaly

181, 166, 161

Deuteranomaly

191, 161, 158

Tritanomaly

196, 159, 166

Monochromacy



Original Color

195, 160, 158

Achromatopsia

170, 170, 170

Achromatomaly

179, 166, 166

CSS Examples

Text

The CSS property to change the color of the text to RYB 195, 160, 158 is called "color". The color property can be set on classes, ids or directly on the HTML element.

This example shows how text in the color rgb(195, 160, 158) looks like.

```
.text, #text, p{  
    color:rgb(195, 160, 158)  
}
```

If you want to add a text shadow in that color use the text-shadow property, you can generate a text shadow directly with our [CSS Text Shadow Generator](#).

Here you see how black text with a 4 pixel rgb(195, 160, 158) colored shadow looks like.

```
.shadow{ text-shadow: 4px 4px 2px rgb(195, 160, 158) }
```

Border

The CSS property to change the border of an element to RYB 195, 160, 158 is called "border". The border property can be set on classes, ids or directly on the HTML element.

This example shows the color as border, it can be applied via the CSS property "border" or "border-color".

```
.border, #border, table{ border:4px solid rgb(195, 160, 158) }
```

If only the border color should be changed use the property `border-color`.

```
.border{ border-color:rgb(195, 160, 158) }
```

If you want to add a box shadow in that color use:

Here you see how a box with a 4 pixel `rgb(195, 160, 158)` colored shadow looks like.

```
.boxshadow{ -moz-box-shadow:4px 4px 4px  
4px rgb(195, 160, 158); -webkit-box-  
shadow:4px 4px 4px 4px rgb(195, 160, 158);  
box-shadow:4px 4px 4px 4px rgb(195, 160,  
158) }
```

Background

The CSS property to change the background color of an element to RGB 195, 160, 158 is called "background". The background property can be set on classes, ids or directly on the HTML element.

```
.background, #background, body{  
background: rgb(195, 160, 158) }
```

If only the background color should be changed can be used:

```
.background{ background-color: rgb(195,  
160, 158) }
```

This example shows the color as background, it is applied via the CSS property "background".

To optimize and compress your CSS code, you can use our [online CSS compressor and optimizer](#) based on csstidy. If you want to create a linear or radial gradient as background or border, check our [CSS Gradient Generator](#).

Hey! You found this booklet interesting? Support Converting Colors with the new Membership Option!

The pro membership hides all ads, plus gives you double the colors in the color bucket, and more awesome pro features!

[Learn more, Memberships starting at \\$2.50/m!](#)

**Follow me
on Twitter!**

@ConvertingColor