

Converting Colors

`RYB(195, 187, 103)`

Have a look what the booklet for
RYB(195, 187, 103) contains.

RYB(195, 187, 103)	3
<i>Conversions</i>	4
<i>Details</i>	6
<i>Harmonies</i>	11
<i>Previews</i>	23
<i>Color Blindness Simulation</i>	26
<i>CSS Examples</i>	29

Color

R_YB(195, 187, 103)

Conversions

Conversions Part 1

Format	Color
Hex	C39367
RGB	195, 147, 103
RGB Percent	76%, 58%, 40%
CMY	0.2353, 0.4239, 0.5961
CMYK	0.00, 0.25, 0.47, 0.24
HSL	29°, 43%, 58%
HSV	29°, 47%, 76%
XYZ	35.3734, 33.4205, 17.4184
YIQ	156.3360, 42.7320, -3.5080

Conversions

Conversions Part 2

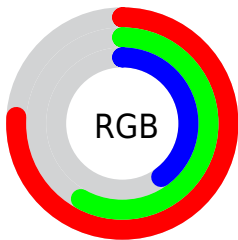
Format	Color
RYB	195, 187, 103
Decimal	12817255
CIELab	64.50, 12.67, 30.22
CIELCh	64, 32.771, 67.256
Yxy	33.4205, 0.4103, 0.3877
Android (android.graphics.Color)	4291007335 (0xFFC39367)
YUV	156.3360, -26.2946, 33.9083
Hunter-Lab	57.8105, 8.0533, 22.6032

Details

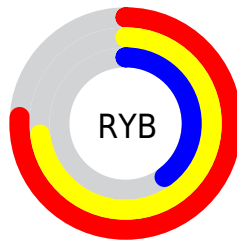
The RYB color **195, 187, 103** is a light color, and the websafe version is hex **CC9966**. A complement of this color would be **103, 135, 195**, and the grayscale version is **157, 157, 157**.

A 20% lighter version of the original color is **253, 242, 155**, and **139, 135, 55** is the 20% darker color. If you saturate the color by 10%, you get **195, 185, 84**, and if you desaturate by 10%, it is **195, 189, 122**.

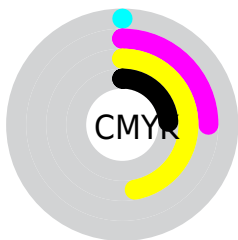
Distribution



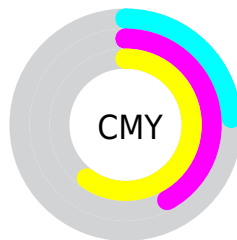
- Red (76%)
- Green (58%)
- Blue (40%)



- Red (76%)
- Yellow (73%)
- Blue (40%)



- Cyan (0%)
- Magenta (25%)
- Yellow (47%)
- Black (24%)



- Cyan (24%)
- Magenta (42%)
- Yellow (60%)

Brightness & Saturation Gradients

These gradients show how the RYB color 195, 187, 103 changes by changing the brightness by 10 percent. The first figure shows a shift by +10% for each color and the second figure -10%.

Similar to the brightness gradients but the following saturation gradients show a change of the RYB color 195, 187, 103 by changing the saturation by 10% instead.

 195, 187, 103

255, 255, 255

 253, 242, 155

 222, 255, 182

 209, 255, 209

 238, 255, 238

 195, 187, 103

 167, 159, 79


 139, 135, 55

 108, 112, 32

 78, 86, 10

 60, 56, 0

 36, 7, 0


 0, 0, 0

 195, 187, 103


 195, 185, 84

 195, 187, 103


 195, 189, 122


 195, 185, 64

 195, 189, 142

 195, 182, 44

 195, 190, 162

 195, 180, 25

 195, 195, 181

 195, 178, 6

 195, 197, 201

 195, 178, 0

 195, 204, 220

 195, 210, 240

 195, 216, 255

 195, 220, 255

Harmonies

Analogous

The Analogous color harmony consists of three colors that are next to each other on the color wheel.



211, 142, 122



195, 187, 103



112, 169, 98

Triad

The Triadic color harmony groups three colors that are evenly spaced from another and form a triangle on the color wheel.



195, 187, 103



66, 121, 172



169, 146, 203

Complementary

The Complementary color scheme is a pair of colors which are on the opposite of each other on the color wheel.



195, 187, 103



103, 135, 195

Split Complementary

Split-complementary colors differ from the complementary color scheme. The scheme consists of three colors, the original color and two neighbors of the complement color.



127, 149, 214



195, 187, 103



48, 114, 191

Square

The Square scheme is like the rectangle color scheme, but the four colors are evenly spaced on the color wheel.



195, 187, 103



102, 149, 170



80, 132, 210



199, 137, 180

Rectangle

The Rectangle color scheme consists of four colors that form a rectangle on the color wheel.



195, 187, 103



104, 163, 119



80, 132, 210



156, 150, 208

Sweetspot

The Sweet Spot groups the original color and five complimentary colors.



195, 187, 103



252, 250, 217



195, 103, 152



128, 124, 106



0, 0, 0



128, 128, 128

Same Dimension

The Same Dimension uses a secret algorithm to generate beautiful new colors.



195, 187, 103



252, 239, 109



106, 195, 103



97, 97, 87



161, 148, 0



33, 31, 0

Inverse Universe

The Inverse Universe completely reimagines the original color for something new.



103, 135, 195



109, 158, 252



103, 106, 195



87, 90, 97



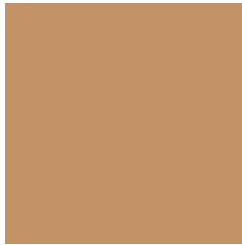
0, 55, 161



0, 11, 33

Previews

White Background



This preview shows how the RYB color 195, 187, 103 looks on a white background.

Color Contrast Check

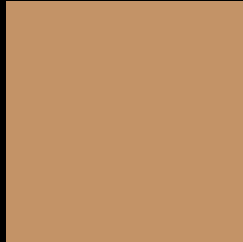
Large Text (above 18pt) WCAG AA × Fail

Any Text WCAG AA × Fail

Large Text (above 18pt) WCAG AAA × Fail

Any Text WCAG AAA × Fail

Black Background



This preview shows how the RYB color 195, 187, 103 looks on a black background.

Color Contrast Check

Large Text (above 18pt) WCAG AA ✓ Pass

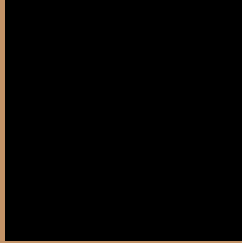
Any Text WCAG AA ✓ Pass

Large Text (above 18pt) WCAG AAA ✓ Pass

Any Text WCAG AAA ✓ Pass

If you want to check with other color combinations, try the [Color Contrast Checker](#).

RYB 195, 187, 103 Background



This preview shows how black text looks on a background with the RYB color 195, 187, 103.



This preview shows how white text looks on a background with the RYB color 195, 187, 103.

Color Blindness Simulation

Color vision deficiency is a very complex topic, and I could not describe the different causes any better than Wikipedia does, so if you want to learn more, you should check out their [article about color blindness](#).

Dichromacy



Original Color

195, 187, 103

Protanopia

123, 170, 107

Deuteranopia

170, 188, 102



Tritanopia
199, 141, 151

Trichromacy



Original Color
195, 187, 103

Protanomaly
146, 179, 106

Deuteranomaly
182, 191, 102

Tritanomaly
198, 144, 134

Monochromacy



Original Color
195, 187, 103

Achromatopsia
156, 156, 156

Achromatomaly
170, 168, 137

CSS Examples

Text

The CSS property to change the color of the text to RYB 195, 187, 103 is called "color". The color property can be set on classes, ids or directly on the HTML element.

This example shows how text in the color `rgb(195, 147, 103)` looks like.

```
.text, #text, p{  
    color:rgb(195, 147, 103)  
}
```

If you want to add a text shadow in that color use the text-shadow property, you can generate a text shadow directly with our [CSS Text Shadow Generator](#).

Here you see how black text with a 4 pixel rgb(195, 147, 103) colored shadow looks like.

```
.shadow{ text-shadow: 4px 4px 2px rgb(195, 147, 103) }
```

Border

The CSS property to change the border of an element to RYB 195, 187, 103 is called "border". The border property can be set on classes, ids or directly on the HTML element.

This example shows the color as border, it can be applied via the CSS property "border" or "border-color".

```
.border, #border, table{ border:4px solid rgb(195, 147, 103) }
```

If only the border color should be changed use the property `border-color`.

```
.border{ border-color:rgb(195, 147, 103) }
```

If you want to add a box shadow in that color use:

Here you see how a box with a 4 pixel `rgb(195, 147, 103)` colored shadow looks like.

```
.boxshadow{ -moz-box-shadow:4px 4px 4px  
4px rgb(195, 147, 103); -webkit-box-  
shadow:4px 4px 4px 4px rgb(195, 147, 103);  
box-shadow:4px 4px 4px 4px rgb(195, 147,  
103) }
```

Background

The CSS property to change the background color of an element to RYB 195, 187, 103 is called "background". The background property can be set on classes, ids or directly on the HTML element.

```
.background, #background, body{  
background: rgb(195, 147, 103) }
```

If only the background color should be changed can be used:

```
.background{ background-color: rgb(195,  
147, 103) }
```

This example shows the color as background, it is applied via the CSS property "background".

To optimize and compress your CSS code, you can use our [online CSS compressor and optimizer](#) based on csstidy. If you want to create a linear or radial gradient as background or border, check our [CSS Gradient Generator](#).

Hey! You found this booklet interesting? Support Converting Colors with the new Membership Option!

The pro membership hides all ads, plus gives you double the colors in the color bucket, and more awesome pro features!

[Learn more, Memberships starting at \\$2.50/m!](#)

**Follow me
on Twitter!**

@ConvertingColor