

Converting Colors

`RYB(196, 144, 141)`

Have a look what the booklet for
RYB(196, 144, 141) contains.

RYB(196, 144, 141)	3
<i>Conversions</i>	4
<i>Details</i>	6
<i>Harmonies</i>	11
<i>Previews</i>	23
<i>Color Blindness Simulation</i>	26
<i>CSS Examples</i>	29

Color

R_YB(196, 144, 141)

Conversions

Conversions Part 1

Format	Color
Hex	C4908D
RGB	196, 144, 141
RGB Percent	77%, 56%, 55%
CMY	0.2314, 0.4359, 0.4471
CMYK	0.00, 0.27, 0.28, 0.23
HSL	3°, 32%, 66%
HSV	3°, 28%, 77%
XYZ	37.5224, 33.5584, 29.6991
YIQ	159.2060, 31.9550, 10.0910

Conversions

Conversions Part 2

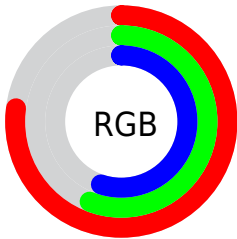
Format	Color
RYB	196, 144, 141
Decimal	12882061
CIELab	64.61, 19.33, 9.28
CIELCh	65, 21.445, 25.637
Yxy	33.5584, 0.3723, 0.3330
Android (android.graphics.Color)	4291072141 (0xFFC4908D)
YUV	159.2060, -8.9756, 32.2683
Hunter-Lab	57.9296, 14.2421, 10.1542

Details

The RYB color **196, 144, 141** is a light color, and the websafe version is hex **CC9999**. A complement of this color would be **141, 168, 196**, and the grayscale version is **159, 159, 159**.

A 20% lighter version of the original color is **254, 198, 195**, and **141, 93, 91** is the 20% darker color. If you saturate the color by 10%, you get **196, 125, 121**, and if you desaturate by 10%, it is **196, 162, 161**.

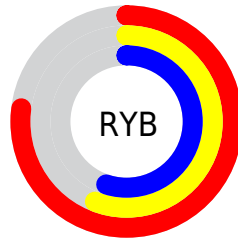
Distribution



Red (77%)

Green (56%)

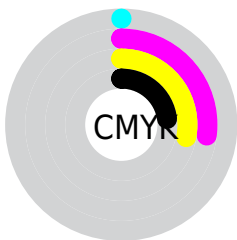
Blue (55%)



Red (77%)

Yellow (56%)

Blue (55%)

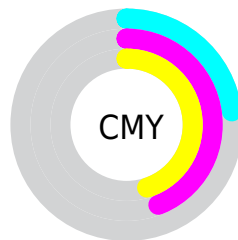


Cyan (0%)

Magenta (27%)

Yellow (28%)

Black (23%)



Cyan (23%)

Magenta (44%)

Yellow (45%)


Brightness & Saturation Gradients

These gradients show how the RYB color 196, 144, 141 changes by changing the brightness by 10 percent. The first figure shows a shift by +10% for each color and the second figure -10%.

Similar to the brightness gradients but the following saturation gradients show a change of the RYB color 196, 144, 141 by changing the saturation by 10% instead.

 196, 144, 141

255, 255, 255

 254, 198, 195


 255, 227, 222

 251, 255, 251

 196, 144, 141

 168, 118, 115

 141, 93, 91

 115, 69, 67

 89, 46, 45

 64, 25, 25

 42, 1, 0

 0, 0, 0

 196, 144, 141

 196, 125, 121

 196, 144, 141

 196, 162, 161

■ 196, 107, 102

■ 196, 181, 180

■ 196, 88, 82

■ 196, 198, 200

■ 196, 69, 63

■ 196, 207, 219

■ 196, 51, 43

■ 196, 217, 239

■ 196, 32, 23

■ 196, 226, 255

■ 196, 15, 4

■ 196, 11, 0

Harmonies

Analogous

The Analogous color harmony consists of three colors that are next to each other on the color wheel.



193, 143, 160



196, 144, 141



189, 160, 126

Triad

The Triadic color harmony groups three colors that are evenly spaced from another and form a triangle on the color wheel.



196, 144, 141



132, 162, 165



130, 150, 194

Complementary

The Complementary color scheme is a pair of colors which are on the opposite of each other on the color wheel.



196, 144, 141



141, 168, 196

Split Complementary

Split-complementary colors differ from the complementary color scheme. The scheme consists of three colors, the original color and two neighbors of the complement color.



109, 141, 188



196, 144, 141



112, 144, 167

Square

The Square scheme is like the rectangle color scheme, but the four colors are evenly spaced on the color wheel.



196, 144, 141



122, 161, 129



102, 136, 173



156, 153, 191

Rectangle

The Rectangle color scheme consists of four colors that form a rectangle on the color wheel.



196, 144, 141



173, 180, 120



102, 136, 173



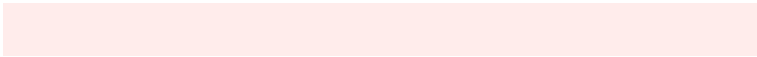
122, 147, 193

Sweetspot

The Sweet Spot groups the original color and five complimentary colors.



196, 144, 141



255, 236, 235



196, 141, 193



128, 115, 115



0, 0, 0



128, 128, 128

Same Dimension

The Same Dimension uses a secret algorithm to generate beautiful new colors.



196, 144, 141



255, 173, 168



187, 196, 141



97, 88, 87



161, 8, 0



33, 2, 0

Inverse Universe

The Inverse Universe completely reimagines the original color for something new.



141, 168, 196



168, 210, 255



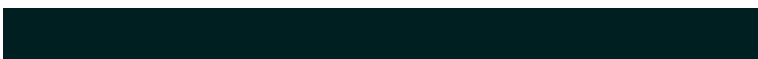
141, 158, 196



87, 92, 97



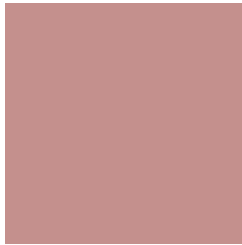
0, 78, 161



0, 16, 33

Previews

White Background



This preview shows how the RYB color 196, 144, 141 looks on a white background.

Color Contrast Check

Large Text (above 18pt) WCAG AA × Fail

Any Text WCAG AA × Fail

Large Text (above 18pt) WCAG AAA × Fail

Any Text WCAG AAA × Fail

Black Background



This preview shows how the RYB color 196, 144, 141 looks on a black background.

Color Contrast Check

Large Text (above 18pt) WCAG AA ✓ Pass

Any Text WCAG AA ✓ Pass

Large Text (above 18pt) WCAG AAA ✓ Pass

Any Text WCAG AAA ✓ Pass

If you want to check with other color combinations, try the [Color Contrast Checker](#).

RYB 196, 144, 141 Background



This preview shows how black text looks on a background with the RYB color 196, 144, 141.



This preview shows how white text looks on a background with the RYB color 196, 144, 141.

Color Blindness Simulation

Color vision deficiency is a very complex topic, and I could not describe the different causes any better than Wikipedia does, so if you want to learn more, you should check out their [article about color blindness](#).

Dichromacy



Original Color

196, 144, 141

Protanopia

159, 162, 148

Deuteranopia

178, 155, 140



Tritanopia
197, 142, 153

Trichromacy



Original Color

196, 144, 141

Protanomaly

174, 154, 145

Deuteranomaly

185, 150, 140

Tritanomaly

197, 143, 149

Monochromacy



Original Color

196, 144, 141

Achromatopsia

159, 159, 159

Achromatomaly

172, 153, 152

CSS Examples

Text

The CSS property to change the color of the text to RYB 196, 144, 141 is called "color". The color property can be set on classes, ids or directly on the HTML element.

This example shows how text in the color `rgb(196, 144, 141)` looks like.

```
.text, #text, p{  
    color:rgb(196, 144, 141)  
}
```

If you want to add a text shadow in that color use the text-shadow property, you can generate a text shadow directly with our [CSS Text Shadow Generator](#).

Here you see how black text with a 4 pixel rgb(196, 144, 141) colored shadow looks like.

```
.shadow{ text-shadow: 4px 4px 2px rgb(196, 144, 141) }
```

Border

The CSS property to change the border of an element to RYB 196, 144, 141 is called "border". The border property can be set on classes, ids or directly on the HTML element.

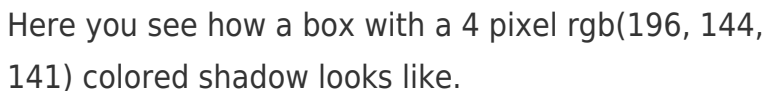
This example shows the color as border, it can be applied via the CSS property "border" or "border-color".

```
.border, #border, table{ border:4px solid rgb(196, 144, 141) }
```

If only the border color should be changed use the property `border-color`.

```
.border{ border-color:rgb(196, 144, 141) }
```

If you want to add a box shadow in that color use:



Here you see how a box with a 4 pixel `rgb(196, 144, 141)` colored shadow looks like.

```
.boxshadow{ -moz-box-shadow:4px 4px 4px 4px rgb(196, 144, 141); -webkit-box-shadow:4px 4px 4px 4px rgb(196, 144, 141); box-shadow:4px 4px 4px 4px rgb(196, 144, 141) }
```

Background

The CSS property to change the background color of an element to RYB 196, 144, 141 is called "background". The background property can be set on classes, ids or directly on the HTML element.

```
.background, #background, body{  
background: rgb(196, 144, 141) }
```

If only the background color should be changed can be used:

```
.background{ background-color: rgb(196,  
144, 141) }
```

This example shows the color as background, it is applied via the CSS property "background".

To optimize and compress your CSS code, you can use our [online CSS compressor and optimizer](#) based on csstidy. If you want to create a linear or radial gradient as background or border, check our [CSS Gradient Generator](#).

Hey! You found this booklet interesting? Support Converting Colors with the new Membership Option!

The pro membership hides all ads, plus gives you double the colors in the color bucket, and more awesome pro features!

[Learn more, Memberships starting at \\$2.50/m!](#)

**Follow me
on Twitter!**

@ConvertingColor