

Converting Colors

`RYB(196, 156, 160)`

Have a look what the booklet for
RYB(196, 156, 160) contains.

RYB(196, 156, 160)	3
<i>Conversions</i>	4
<i>Details</i>	6
<i>Harmonies</i>	11
<i>Previews</i>	23
<i>Color Blindness Simulation</i>	26
<i>CSS Examples</i>	29

Color

R_YB(196, 156, 160)

Conversions

Conversions Part 1

Format	Color
Hex	C49CA0
RGB	196, 156, 160
RGB Percent	77%, 61%, 63%
CMY	0.2314, 0.3882, 0.3725
CMYK	0.00, 0.20, 0.18, 0.23
HSL	354°, 25%, 69%
HSV	354°, 20%, 77%
XYZ	40.9986, 38.0508, 38.4414
YIQ	168.4160, 22.5560, 9.7240

Conversions

Conversions Part 2

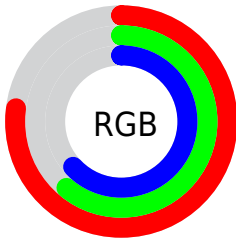
Format	Color
RYB	196, 156, 160
Decimal	12885152
CIELab	68.06, 15.47, 3.57
CIElCh	68, 15.875, 13.007
Yxy	38.0508, 0.3490, 0.3239
Android (android.graphics.Color)	4291075232 (0xFFC49CA0)
YUV	168.4160, -4.1491, 24.1912
Hunter-Lab	61.6853, 10.6891, 6.2310

Details

The RYB color **196, 156, 160** is a light color, and the websafe version is hex **CC9999**. A complement of this color would be **156, 177, 196**, and the grayscale version is **168, 168, 168**.

A 20% lighter version of the original color is **253, 211, 215**, and **142, 105, 109** is the 20% darker color. If you saturate the color by 10%, you get **196, 136, 142**, and if you desaturate by 10%, it is **196, 176, 178**.

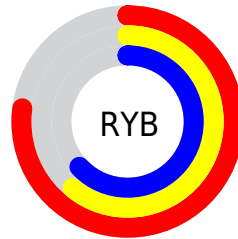
Distribution



Red (77%)

Green (61%)

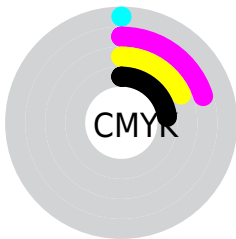
Blue (63%)



Red (77%)

Yellow (61%)

Blue (63%)

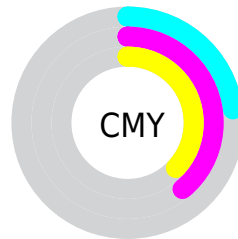


Cyan (0%)

Magenta (20%)

Yellow (18%)

Black (23%)



Cyan (23%)

Magenta (39%)

Yellow (37%)

Brightness & Saturation Gradients

These gradients show how the RYB color 196, 156, 160 changes by changing the brightness by 10 percent. The first figure shows a shift by +10% for each color and the second figure -10%.

Similar to the brightness gradients but the following saturation gradients show a change of the RYB color 196, 156, 160 by changing the saturation by 10% instead.

 196, 156, 160


255, 255, 255

 253, 211, 215


 255, 239, 243

 196, 156, 160

 168, 130, 134

 142, 105, 109

 116, 80, 84

 91, 57, 61

 66, 35, 40

 43, 14, 19

 17, 0, 0

 0, 0, 0


 196, 156, 160

 196, 156, 160

 196, 136, 142

 196, 176, 178

 196, 117, 125

 196, 195, 195

 196, 97, 107

 196, 206, 215

 196, 78, 89

 196, 216, 234

 196, 58, 72

 196, 227, 254

 196, 38, 54

 196, 226, 255

 196, 19, 37

 196, 0, 20

Harmonies

Analogous

The Analogous color harmony consists of three colors that are next to each other on the color wheel.



190, 157, 175



196, 156, 160



194, 161, 147

Triad

The Triadic color harmony groups three colors that are evenly spaced from another and form a triangle on the color wheel.



196, 156, 160



145, 171, 162



140, 159, 193

Complementary

The Complementary color scheme is a pair of colors which are on the opposite of each other on the color wheel.



196, 156, 160



156, 177, 196

Split Complementary

Split-complementary colors differ from the complementary color scheme. The scheme consists of three colors, the original color and two neighbors of the complement color.



130, 154, 185



196, 156, 160



139, 162, 174

Square

The Square scheme is like the rectangle color scheme, but the four colors are evenly spaced on the color wheel.



196, 156, 160



143, 171, 138



129, 152, 174



158, 164, 194

Rectangle

The Rectangle color scheme consists of four colors that form a rectangle on the color wheel.



196, 156, 160



189, 175, 141



129, 152, 174



136, 157, 191

Sweetspot

The Sweet Spot groups the original color and five complimentary colors.



196, 156, 160



255, 240, 241



192, 156, 196



128, 119, 119



0, 0, 0



128, 128, 128

Same Dimension

The Same Dimension uses a secret algorithm to generate beautiful new colors.



196, 156, 160



255, 194, 200



196, 183, 156



97, 87, 88



161, 0, 16



33, 0, 3

Inverse Universe

The Inverse Universe completely reimagines the original color for something new.



196, 156, 160



255, 194, 200



156, 171, 196



97, 87, 88



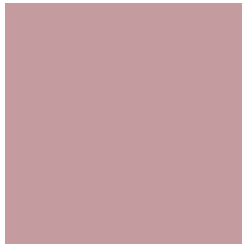
161, 0, 16



33, 0, 3

Previews

White Background



This preview shows how the RYB color 196, 156, 160 looks on a white background.

Color Contrast Check

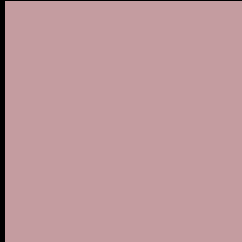
Large Text (above 18pt) WCAG AA × Fail

Any Text WCAG AA × Fail

Large Text (above 18pt) WCAG AAA × Fail

Any Text WCAG AAA × Fail

Black Background



This preview shows how the RYB color 196, 156, 160 looks on a black background.

Color Contrast Check

Large Text (above 18pt) WCAG AA ✓ Pass

Any Text WCAG AA ✓ Pass

Large Text (above 18pt) WCAG AAA ✓ Pass

Any Text WCAG AAA ✓ Pass

If you want to check with other color combinations, try the [Color Contrast Checker](#).

RYB 196, 156, 160 Background



This preview shows how black text looks on a background with the RYB color 196, 156, 160.



This preview shows how white text looks on a background with the RYB color 196, 156, 160.

Color Blindness Simulation

Color vision deficiency is a very complex topic, and I could not describe the different causes any better than Wikipedia does, so if you want to learn more, you should check out their [article about color blindness](#).

Dichromacy



Original Color
196, 156, 160

Protanopia
169, 165, 165

Deuteranopia
185, 161, 159



Tritanopia
197, 155, 167

Trichromacy



Original Color

196, 156, 160

Protanomaly

179, 162, 163

Deuteranomaly

189, 159, 159

Tritanomaly

197, 155, 164

Monochromacy



Original Color

196, 156, 160

Achromatopsia

168, 168, 168

Achromatomaly

178, 164, 165

CSS Examples

Text

The CSS property to change the color of the text to RYB 196, 156, 160 is called "color". The color property can be set on classes, ids or directly on the HTML element.

This example shows how text in the color `rgb(196, 156, 160)` looks like.

```
.text, #text, p{  
    color:rgb(196, 156, 160)  
}
```

If you want to add a text shadow in that color use the text-shadow property, you can generate a text shadow directly with our [CSS Text Shadow Generator](#).

Here you see how black text with a 4 pixel rgb(196, 156, 160) colored shadow looks like.

```
.shadow{ text-shadow: 4px 4px 2px rgb(196, 156, 160) }
```

Border

The CSS property to change the border of an element to RYB 196, 156, 160 is called "border". The border property can be set on classes, ids or directly on the HTML element.

This example shows the color as border, it can be applied via the CSS property "border" or "border-color".

```
.border, #border, table{ border:4px solid rgb(196, 156, 160) }
```

If only the border color should be changed use the property `border-color`.

```
.border{ border-color:rgb(196, 156, 160) }
```

If you want to add a box shadow in that color use:

Here you see how a box with a 4 pixel `rgb(196, 156, 160)` colored shadow looks like.

```
.boxshadow{ -moz-box-shadow:4px 4px 4px  
4px rgb(196, 156, 160); -webkit-box-  
shadow:4px 4px 4px 4px rgb(196, 156, 160);  
box-shadow:4px 4px 4px 4px rgb(196, 156,  
160) }
```

Background

The CSS property to change the background color of an element to RYB 196, 156, 160 is called "background". The background property can be set on classes, ids or directly on the HTML element.

```
.background, #background, body{  
background: rgb(196, 156, 160) }
```

If only the background color should be changed can be used:

```
.background{ background-color: rgb(196,  
156, 160) }
```

This example shows the color as background, it is applied via the CSS property "background".

To optimize and compress your CSS code, you can use our [online CSS compressor and optimizer](#) based on csstidy. If you want to create a linear or radial gradient as background or border, check our [CSS Gradient Generator](#).

Hey! You found this booklet interesting? Support Converting Colors with the new Membership Option!

The pro membership hides all ads, plus gives you double the colors in the color bucket, and more awesome pro features!

[Learn more, Memberships starting at \\$2.50/m!](#)

**Follow me
on Twitter!**

@ConvertingColor