

Converting Colors

`RYB(196, 160, 81)`

Have a look what the booklet for
RYB(196, 160, 81) contains.

RYB(196, 160, 81)	3
<i>Conversions</i>	4
<i>Details</i>	6
<i>Harmonies</i>	11
<i>Previews</i>	23
<i>Color Blindness Simulation</i>	26
<i>CSS Examples</i>	29

Color

`RYB(196, 160, 81)`

Conversions

Conversions Part 1

Format	Color
Hex	C48051
RGB	196, 128, 81
RGB Percent	77%, 50%, 32%
CMY	0.2314, 0.4987, 0.6824
CMYK	0.00, 0.35, 0.59, 0.23
HSL	24°, 49%, 54%
HSV	24°, 59%, 77%
XYZ	31.9472, 27.7238, 11.4520
YIQ	142.9740, 55.6150, -0.2010

Conversions

Conversions Part 2

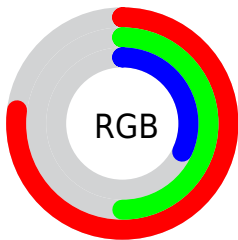
Format	Color
R_{YB}	196, 160, 81
Decimal	12877905
CIE Lab	59.64, 21.62, 36.00
CIE LCh	60, 41.995, 59.020
Yxy	27.7238, 0.4492, 0.3898
Android (android.graphics.Color)	4291067985 (0xFFC48051)
YUV	142.9740, -30.5532, 46.5038
Hunter-Lab	52.6534, 16.1603, 23.9619

Details

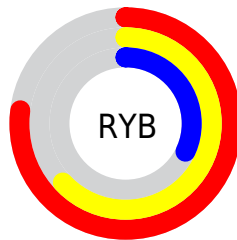
The RYB color **196, 160, 81** is a dark color, and the websafe version is hex **CC9966**. The color can be described as middle muted orange. A complement of this color would be **81, 124, 196**, and the grayscale version is **143, 143, 143**.

A 20% lighter version of the original color is **255, 215, 131**, and **138, 110, 34** is the 20% darker color. If you saturate the color by 10%, you get **196, 154, 61**, and if you desaturate by 10%, it is **196, 164, 101**.

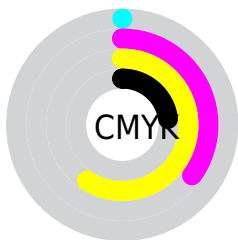
Distribution



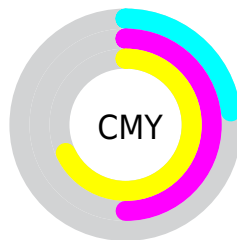
- Red (77%)
- Green (50%)
- Blue (32%)



- Red (77%)
- Yellow (63%)
- Blue (32%)



- Cyan (0%)
- Magenta (35%)
- Yellow (59%)
- Black (23%)



- Cyan (23%)
- Magenta (50%)
- Yellow (68%)

Brightness & Saturation Gradients

These gradients show how the RYB color 196, 160, 81 changes by changing the brightness by 10 percent. The first figure shows a shift by +10% for each color and the second figure -10%.

Similar to the brightness gradients but the following saturation gradients show a change of the RYB color 196, 160, 81 by changing the saturation by 10% instead.

 196, 160, 81  196, 160, 81

255, 255, 255  167, 136, 57

 255, 215, 131  138, 110, 34

 245, 255, 158  111, 91, 10

 209, 255, 185  84, 52, 0

 213, 255, 213  57, 14, 0

 241, 255, 241  34, 0, 1

 0, 0, 0

 196, 160, 81  196, 160, 81

 196, 154, 61  196, 164, 101

■ 196, 149, 42

■ 196, 172, 120

■ 196, 142, 22

■ 196, 179, 140

■ 196, 134, 3

■ 196, 184, 159

■ 196, 135, 0

■ 196, 191, 179

■ 196, 197, 199

■ 196, 204, 218

■ 196, 212, 238

■ 196, 218, 255

Harmonies

Analogous

The Analogous color harmony consists of three colors that are next to each other on the color wheel.



212, 116, 110



196, 160, 81



103, 167, 68

Triad

The Triadic color harmony groups three colors that are evenly spaced from another and form a triangle on the color wheel.



196, 160, 81



0, 87, 162



145, 134, 208

Complementary

The Complementary color scheme is a pair of colors which are on the opposite of each other on the color wheel.



196, 160, 81



81, 124, 196

Split Complementary

Split-complementary colors differ from the complementary color scheme. The scheme consists of three colors, the original color and two neighbors of the complement color.



77, 124, 217



196, 160, 81



0, 85, 178

Square

The Square scheme is like the rectangle color scheme, but the four colors are evenly spaced on the color wheel.



196, 160, 81



83, 143, 159



0, 89, 206



188, 121, 182

Rectangle

The Rectangle color scheme consists of four colors that form a rectangle on the color wheel.



196, 160, 81



71, 149, 77



0, 89, 206



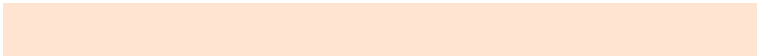
125, 137, 213

Sweetspot

The Sweet Spot groups the original color and five complimentary colors.



196, 160, 81



255, 241, 209



196, 81, 150



128, 119, 99



0, 0, 0



128, 128, 128

Same Dimension

The Same Dimension uses a secret algorithm to generate beautiful new colors.



196, 160, 81



255, 198, 77



93, 196, 81



97, 94, 87



161, 109, 0



33, 21, 0

Inverse Universe

The Inverse Universe completely reimagines the original color for something new.



81, 124, 196



77, 143, 255



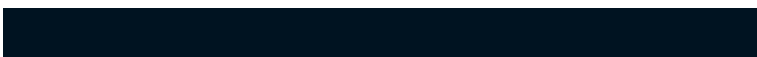
81, 91, 196



87, 91, 97



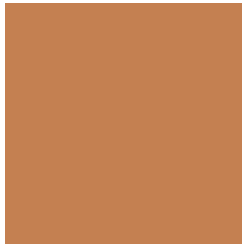
0, 60, 161



0, 12, 33

Previews

White Background



This preview shows how the RYB color 196, 160, 81 looks on a white background.

Color Contrast Check

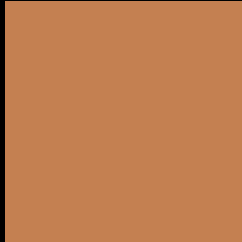
Large Text (above 18pt) WCAG AA ✓ Pass

Any Text WCAG AA ✗ Fail

Large Text (above 18pt) WCAG AAA ✗ Fail

Any Text WCAG AAA ✗ Fail

Black Background



This preview shows how the RYB color 196, 160, 81 looks on a black background.

Color Contrast Check

Large Text (above 18pt) WCAG AA ✓ Pass

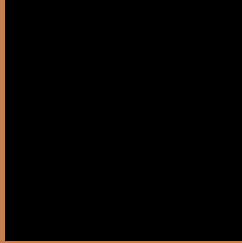
Any Text WCAG AA ✓ Pass

Large Text (above 18pt) WCAG AAA ✓ Pass

Any Text WCAG AAA × Fail

If you want to check with other color combinations, try the [Color Contrast Checker](#).

R Y B 196, 160, 81 Background



This preview shows how black text looks on a background with the RYB color 196, 160, 81.

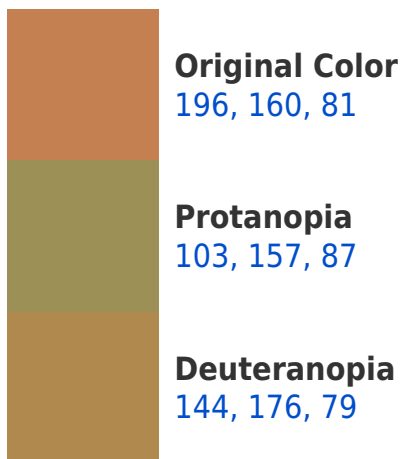


This preview shows how white text looks on a background with the RYB color 196, 160, 81.

Color Blindness Simulation

Color vision deficiency is a very complex topic, and I could not describe the different causes any better than Wikipedia does, so if you want to learn more, you should check out their [article about color blindness](#).

Dichromacy





Tritanopia
200, 122, 131

Trichromacy



Original Color

196, 160, 81

Protanomaly

139, 171, 85

Deuteranomaly

173, 183, 80

Tritanomaly

199, 126, 113

Monochromacy



Original Color

196, 160, 81

Achromatopsia

143, 143, 143

Achromatomaly

162, 149, 120

CSS Examples

Text

The CSS property to change the color of the text to RYB 196, 160, 81 is called "color". The color property can be set on classes, ids or directly on the HTML element.

This example shows how text in the color `rgb(196, 128, 81)` looks like.

```
.text, #text, p{  
    color:rgb(196, 128, 81)  
}
```

If you want to add a text shadow in that color use the text-shadow property, you can generate a text shadow directly with our [CSS Text Shadow Generator](#).

Here you see how black text with a 4 pixel rgb(196, 128, 81) colored shadow looks like.

```
.shadow{ text-shadow: 4px 4px 2px rgb(196, 128, 81) }
```

Border

The CSS property to change the border of an element to RYB 196, 160, 81 is called "border". The border property can be set on classes, ids or directly on the HTML element.

This example shows the color as border, it can be applied via the CSS property "border" or "border-color".

```
.border, #border, table{ border:4px solid rgb(196, 128, 81) }
```

If only the border color should be changed use the property `border-color`.

```
.border{ border-color:rgb(196, 128, 81) }
```

If you want to add a box shadow in that color use:

Here you see how a box with a 4 pixel `rgb(196, 128, 81)` colored shadow looks like.

```
.boxshadow{ -moz-box-shadow:4px 4px 4px  
4px rgb(196, 128, 81); -webkit-box-  
shadow:4px 4px 4px 4px rgb(196, 128, 81);  
box-shadow:4px 4px 4px 4px rgb(196, 128,  
81) }
```

Background

The CSS property to change the background color of an element to RYB 196, 160, 81 is called "background". The background property can be set on classes, ids or directly on the HTML element.

```
.background, #background, body{  
background: rgb(196, 128, 81) }
```

If only the background color should be changed can be used:

```
.background{ background-color: rgb(196,  
128, 81) }
```

This example shows the color as background, it is applied via the CSS property "background".

To optimize and compress your CSS code, you can use our [online CSS compressor and optimizer](#) based on csstidy. If you want to create a linear or radial gradient as background or border, check our [CSS Gradient Generator](#).

Hey! You found this booklet interesting? Support Converting Colors with the new Membership Option!

The pro membership hides all ads, plus gives you double the colors in the color bucket, and more awesome pro features!

[Learn more, Memberships starting at \\$2.50/m!](#)

**Follow me
on Twitter!**

@ConvertingColor