

Converting Colors

`RYB(196, 181, 171)`

Have a look what the booklet for
RYB(196, 181, 171) contains.

RYB(196, 181, 171)	3
<i>Conversions</i>	4
<i>Details</i>	6
<i>Harmonies</i>	11
<i>Previews</i>	23
<i>Color Blindness Simulation</i>	26
<i>CSS Examples</i>	29

Color

R_YB(196, 181, 171)

Conversions

Conversions Part 1

Format	Color
Hex	C4B2AB
RGB	196, 178, 171
RGB Percent	77%, 70%, 67%
CMY	0.2314, 0.3014, 0.3294
CMYK	0.00, 0.09, 0.13, 0.23
HSL	17°, 17%, 72%
HSV	17°, 13%, 77%
XYZ	46.0645, 46.5737, 45.0898
YIQ	182.5840, 12.9750, 1.6390

Conversions

Conversions Part 2

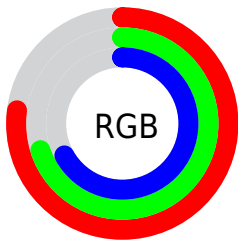
Format	Color
RYB	196, 181, 171
Decimal	12890795
CIELab	73.92, 5.18, 5.95
CIELCh	74, 7.889, 48.994
Yxy	46.5737, 0.3345, 0.3382
Android (android.graphics.Color)	4291080875 (0xFFC4B2AB)
YUV	182.5840, -5.7109, 11.7658
Hunter-Lab	68.2449, 1.0566, 8.5982

Details

The RYB color **196, 181, 171** is a light color, and the websafe version is hex **CCCCCC**. A complement of this color would be **171, 181, 196**, and the grayscale version is **183, 183, 183**.

A 20% lighter version of the original color is **253, 237, 226**, and **142, 127, 119** is the 20% darker color. If you saturate the color by 10%, you get **196, 169, 151**, and if you desaturate by 10%, it is **196, 192, 191**.

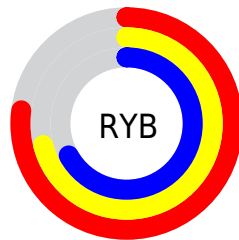
Distribution



Red (77%)

Green (70%)

Blue (67%)



Red (77%)

Yellow (71%)

Blue (67%)

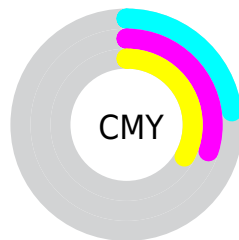


Cyan (0%)

Magenta (9%)

Yellow (13%)

Black (23%)



Cyan (23%)

Magenta (30%)

Yellow (33%)

Brightness & Saturation Gradients

These gradients show how the RYB color 196, 181, 171 changes by changing the brightness by 10 percent. The first figure shows a shift by +10% for each color and the second figure -10%.

Similar to the brightness gradients but the following saturation gradients show a change of the RYB color 196, 181, 171 by changing the saturation by 10% instead.

■ 196, 181, 171

255, 255, 255

■ 253, 237, 226

■ 196, 181, 171

■ 169, 153, 145

■ 142, 129, 119

■ 116, 104, 94

■ 92, 79, 71

■ 68, 57, 48

■ 45, 36, 27

■ 26, 16, 0

■ 0, 0, 0

■ 196, 181, 171

■ 196, 181, 171

■ 196, 169, 151

■ 196, 192, 191

■ 196, 157, 132

■ 196, 202, 210

■ 196, 146, 112

■ 196, 210, 230

■ 196, 133, 93

■ 196, 218, 249

■ 196, 122, 73

■ 196, 224, 255

■ 196, 110, 53

■ 196, 226, 255

■ 196, 98, 34

■ 196, 87, 14

■ 196, 78, 0

Harmonies

Analogous

The Analogous color harmony consists of three colors that are next to each other on the color wheel.



198, 177, 177



196, 181, 171



189, 191, 168

Triad

The Triadic color harmony groups three colors that are evenly spaced from another and form a triangle on the color wheel.



196, 181, 171



167, 179, 186



180, 181, 195

Complementary

The Complementary color scheme is a pair of colors which are on the opposite of each other on the color wheel.



196, 181, 171



171, 181, 196

Split Complementary

Split-complementary colors differ from the complementary color scheme. The scheme consists of three colors, the original color and two neighbors of the complement color.



171, 179, 196



196, 181, 171



164, 175, 186

Square

The Square scheme is like the rectangle color scheme, but the four colors are evenly spaced on the color wheel.



196, 181, 171



172, 185, 183



165, 176, 192



189, 178, 191

Rectangle

The Rectangle color scheme consists of four colors that form a rectangle on the color wheel.



196, 181, 171



172, 186, 167



165, 176, 192



177, 181, 196

Sweetspot

The Sweet Spot groups the original color and five complimentary colors.



196, 181, 171



255, 249, 245



196, 171, 189



128, 124, 121



0, 0, 0



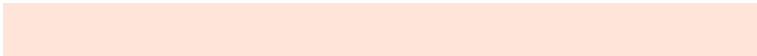
128, 128, 128

Same Dimension

The Same Dimension uses a secret algorithm to generate beautiful new colors.



196, 181, 171



255, 232, 217



177, 196, 171



97, 91, 87



161, 64, 0



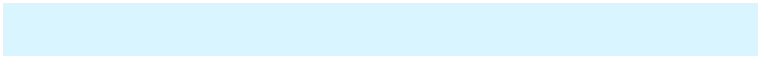
33, 12, 0

Inverse Universe

The Inverse Universe completely reimagines the original color for something new.



171, 181, 196



217, 233, 255



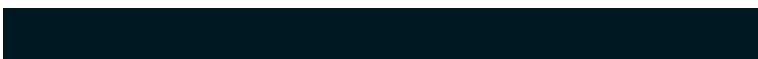
171, 175, 196



87, 91, 97



0, 67, 161



0, 14, 33

Previews

White Background



This preview shows how the RYB color 196, 181, 171 looks on a white background.

Color Contrast Check

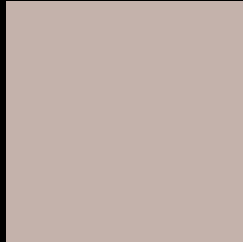
Large Text (above 18pt) WCAG AA × Fail

Any Text WCAG AA × Fail

Large Text (above 18pt) WCAG AAA × Fail

Any Text WCAG AAA × Fail

Black Background



This preview shows how the RYB color 196, 181, 171 looks on a black background.

Color Contrast Check

Large Text (above 18pt) WCAG AA ✓ Pass

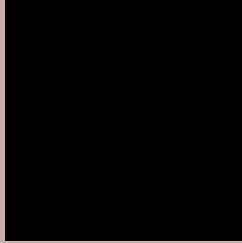
Any Text WCAG AA ✓ Pass

Large Text (above 18pt) WCAG AAA ✓ Pass

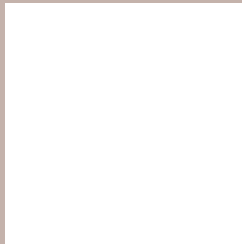
Any Text WCAG AAA ✓ Pass

If you want to check with other color combinations, try the [Color Contrast Checker](#).

RYB 196, 181, 171 Background



This preview shows how black text looks on a background with the RYB color 196, 181, 171.



This preview shows how white text looks on a background with the RYB color 196, 181, 171.

Color Blindness Simulation

Color vision deficiency is a very complex topic, and I could not describe the different causes any better than Wikipedia does, so if you want to learn more, you should check out their [article about color blindness](#).

Dichromacy



Original Color
196, 181, 171

Protanopia
184, 187, 173

Deuteranopia
203, 177, 172



Tritanopia
198, 175, 189

Trichromacy



Original Color

196, 181, 171

Protanomaly

190, 186, 172

Deuteranomaly

200, 178, 172

Tritanomaly

197, 176, 182

Monochromacy



Original Color

196, 181, 171

Achromatopsia

183, 183, 183

Achromatomaly

188, 182, 179

CSS Examples

Text

The CSS property to change the color of the text to RYB 196, 181, 171 is called "color". The color property can be set on classes, ids or directly on the HTML element.

This example shows how text in the color rgb(196, 178, 171) looks like.

```
.text, #text, p{  
    color:rgb(196, 178, 171)  
}
```

If you want to add a text shadow in that color use the text-shadow property, you can generate a text shadow directly with our [CSS Text Shadow Generator](#).

Here you see how black text with a 4 pixel rgb(196, 178, 171) colored shadow looks like.

```
.shadow{ text-shadow: 4px 4px 2px rgb(196, 178, 171) }
```

Border

The CSS property to change the border of an element to RYB 196, 181, 171 is called "border". The border property can be set on classes, ids or directly on the HTML element.

This example shows the color as border, it can be applied via the CSS property "border" or "border-color".

```
.border, #border, table{ border:4px solid rgb(196, 178, 171) }
```

If only the border color should be changed use the property `border-color`.

```
.border{ border-color:rgb(196, 178, 171) }
```

If you want to add a box shadow in that color use:

Here you see how a box with a 4 pixel `rgb(196, 178, 171)` colored shadow looks like.

```
.boxshadow{ -moz-box-shadow:4px 4px 4px  
4px rgb(196, 178, 171); -webkit-box-  
shadow:4px 4px 4px 4px rgb(196, 178, 171);  
box-shadow:4px 4px 4px 4px rgb(196, 178,  
171) }
```

Background

The CSS property to change the background color of an element to RYB 196, 181, 171 is called "background". The background property can be set on classes, ids or directly on the HTML element.

```
.background, #background, body{  
background: rgb(196, 178, 171) }
```

If only the background color should be changed can be used:

```
.background{ background-color: rgb(196,  
178, 171) }
```

This example shows the color as background, it is applied via the CSS property "background".

To optimize and compress your CSS code, you can use our [online CSS compressor and optimizer](#) based on csstidy. If you want to create a linear or radial gradient as background or border, check our [CSS Gradient Generator](#).

Hey! You found this booklet interesting? Support Converting Colors with the new Membership Option!

The pro membership hides all ads, plus gives you double the colors in the color bucket, and more awesome pro features!

[Learn more, Memberships starting at \\$2.50/m!](#)

**Follow me
on Twitter!**

@ConvertingColor