

Converting Colors

`RYB(196, 198, 123)`

Have a look what the booklet for
RYB(196, 198, 123) contains.

RYB(196, 198, 123)	3
<i>Conversions</i>	4
<i>Details</i>	6
<i>Harmonies</i>	11
<i>Previews</i>	23
<i>Color Blindness Simulation</i>	26
<i>CSS Examples</i>	29

Color

R_YB(196, 198, 123)

Conversions

Conversions Part 1

Format	Color
Hex	C6A17B
RGB	198, 161, 123
RGB Percent	78%, 63%, 48%
CMY	0.2235, 0.3686, 0.5176
CMYK	0.00, 0.19, 0.38, 0.22
HSL	30°, 40%, 63%
HSV	30°, 38%, 78%
XYZ	39.6099, 38.9279, 24.1651
YIQ	167.7310, 34.2500, -3.9740

Conversions

Conversions Part 2

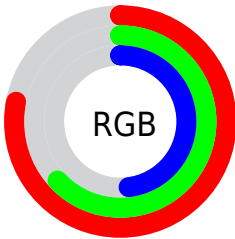
Format	Color
RYB	196, 198, 123
Decimal	13017467
CIELab	68.70, 8.39, 24.94
CIElCh	69, 26.317, 71.408
Yxy	38.9279, 0.3857, 0.3790
Android (android.graphics.Color)	4291207547 (0xFFC6A17B)
YUV	167.7310, -22.0524, 26.5459
Hunter-Lab	62.3922, 4.1348, 20.7110

Details

The RYB color **196, 198, 123** is a light color, and the websafe version is hex **CC9966**. A complement of this color would be **123, 148, 198**, and the grayscale version is **168, 168, 168**.

A 20% lighter version of the original color is **253, 255, 176**, and **137, 143, 74** is the 20% darker color. If you saturate the color by 10%, you get **196, 198, 103**, and if you desaturate by 10%, it is **196, 198, 143**.

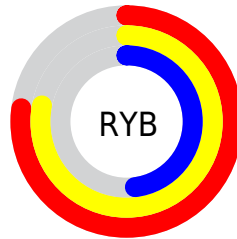
Distribution



Red (78%)

Green (63%)

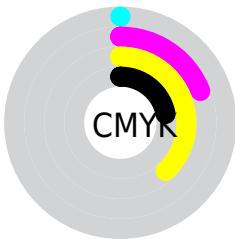
Blue (48%)



Red (77%)

Yellow (78%)

Blue (48%)

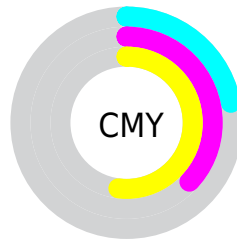


Cyan (0%)

Magenta (19%)

Yellow (38%)

Black (22%)



Cyan (22%)

Magenta (37%)

Yellow (52%)

Brightness & Saturation Gradients

These gradients show how the RYB color 196, 198, 123 changes by changing the brightness by 10 percent. The first figure shows a shift by +10% for each color and the second figure -10%.

Similar to the brightness gradients but the following saturation gradients show a change of the RYB color 196, 198, 123 by changing the saturation by 10% instead.

 196, 198, 123

255, 255, 255

 253, 255, 176


 217, 255, 203


 232, 255, 232

 196, 198, 123


 166, 170, 98

 137, 143, 74

 110, 116, 51

 81, 90, 29

 48, 65, 5

 41, 39, 0

 7, 0, 0

 0, 0, 0

 196, 198, 123


 196, 198, 123

 196, 198, 103

 196, 198, 143

 196, 198, 83

 196, 198, 163

 194, 198, 64

 198, 198, 182

 194, 198, 44

 198, 199, 202

 194, 198, 24

 198, 206, 222

 194, 198, 4

 198, 213, 242

 194, 198, 0

 198, 218, 255

 198, 222, 255

 198, 225, 255

Harmonies

Analogous

The Analogous color harmony consists of three colors that are next to each other on the color wheel.



212, 159, 137



196, 198, 123



129, 176, 121

Triad

The Triadic color harmony groups three colors that are evenly spaced from another and form a triangle on the color wheel.



196, 198, 123



101, 142, 181



183, 158, 203

Complementary

The Complementary color scheme is a pair of colors which are on the opposite of each other on the color wheel.



196, 198, 123



123, 148, 198

Split Complementary

Split-complementary colors differ from the complementary color scheme. The scheme consists of three colors, the original color and two neighbors of the complement color.



151, 164, 214



196, 198, 123



97, 142, 198

Square

The Square scheme is like the rectangle color scheme, but the four colors are evenly spaced on the color wheel.



196, 198, 123



122, 160, 180



118, 153, 212



205, 152, 183

Rectangle

The Rectangle color scheme consists of four colors that form a rectangle on the color wheel.



196, 198, 123



126, 174, 142



118, 153, 212



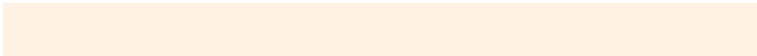
173, 161, 208

Sweetspot

The Sweet Spot groups the original color and five complimentary colors.



196, 198, 123



255, 255, 227



198, 123, 161



128, 126, 111



0, 0, 0



128, 128, 128

Same Dimension

The Same Dimension uses a secret algorithm to generate beautiful new colors.



196, 198, 123



253, 255, 140



123, 198, 123



97, 99, 90



157, 163, 0



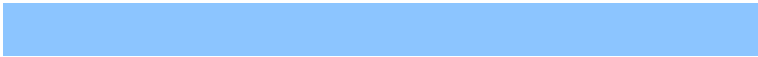
36, 36, 0

Inverse Universe

The Inverse Universe completely reimagines the original color for something new.



123, 148, 198



140, 178, 255



123, 123, 198



90, 93, 99



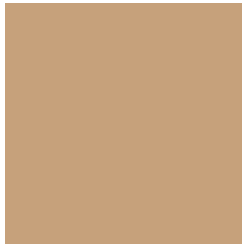
0, 54, 163



0, 12, 36

Previews

White Background



This preview shows how the RYB color 196, 198, 123 looks on a white background.

Color Contrast Check

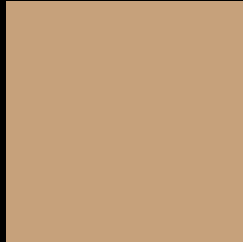
Large Text (above 18pt) WCAG AA × Fail

Any Text WCAG AA × Fail

Large Text (above 18pt) WCAG AAA × Fail

Any Text WCAG AAA × Fail

Black Background



This preview shows how the RYB color 196, 198, 123 looks on a black background.

Color Contrast Check

Large Text (above 18pt) WCAG AA ✓ Pass

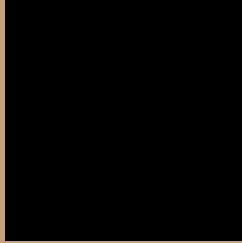
Any Text WCAG AA ✓ Pass

Large Text (above 18pt) WCAG AAA ✓ Pass

Any Text WCAG AAA ✓ Pass

If you want to check with other color combinations, try the [Color Contrast Checker](#).

R Y B 196, 198, 123 Background



This preview shows how black text looks on a background with the RYB color 196, 198, 123.



This preview shows how white text looks on a background with the RYB color 196, 198, 123.

Color Blindness Simulation

Color vision deficiency is a very complex topic, and I could not describe the different causes any better than Wikipedia does, so if you want to learn more, you should check out their [article about color blindness](#).

Dichromacy



Original Color

196, 198, 123

Protanopia

141, 180, 126

Deuteranopia

199, 199, 123



Tritanopia

203, 155, 167

Trichromacy



Original Color

196, 198, 123

Protanomaly

159, 187, 125

Deuteranomaly

199, 199, 123

Tritanomaly

201, 158, 151

Monochromacy



Original Color

196, 198, 123

Achromatopsia

168, 168, 168

Achromatomaly

179, 177, 152

CSS Examples

Text

The CSS property to change the color of the text to RYB 196, 198, 123 is called "color". The color property can be set on classes, ids or directly on the HTML element.

This example shows how text in the color `rgb(198, 161, 123)` looks like.

```
.text, #text, p{  
    color:rgb(198, 161, 123)  
}
```

If you want to add a text shadow in that color use the text-shadow property, you can generate a text shadow directly with our [CSS Text Shadow Generator](#).

Here you see how black text with a 4 pixel rgb(198, 161, 123) colored shadow looks like.

```
.shadow{ text-shadow: 4px 4px 2px rgb(198, 161, 123) }
```

Border

The CSS property to change the border of an element to RYB 196, 198, 123 is called "border". The border property can be set on classes, ids or directly on the HTML element.

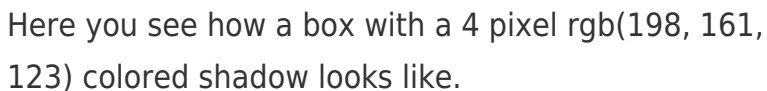
This example shows the color as border, it can be applied via the CSS property "border" or "border-color".

```
.border, #border, table{ border:4px solid rgb(198, 161, 123) }
```

If only the border color should be changed use the property `border-color`.

```
.border{ border-color:rgb(198, 161, 123) }
```

If you want to add a box shadow in that color use:



Here you see how a box with a 4 pixel `rgb(198, 161, 123)` colored shadow looks like.

```
.boxshadow{ -moz-box-shadow:4px 4px 4px 4px rgb(198, 161, 123); -webkit-box-shadow:4px 4px 4px 4px rgb(198, 161, 123); box-shadow:4px 4px 4px 4px rgb(198, 161, 123) }
```

Background

The CSS property to change the background color of an element to RYB 196, 198, 123 is called "background". The background property can be set on classes, ids or directly on the HTML element.

```
.background, #background, body{  
background: rgb(198, 161, 123) }
```

If only the background color should be changed can be used:

```
.background{ background-color: rgb(198,  
161, 123) }
```

This example shows the color as background, it is applied via the CSS property "background".

To optimize and compress your CSS code, you can use our [online CSS compressor and optimizer](#) based on csstidy. If you want to create a linear or radial gradient as background or border, check our [CSS Gradient Generator](#).

Hey! You found this booklet interesting? Support Converting Colors with the new Membership Option!

The pro membership hides all ads, plus gives you double the colors in the color bucket, and more awesome pro features!

[Learn more, Memberships starting at \\$2.50/m!](#)

**Follow me
on Twitter!**

@ConvertingColor