

Converting Colors

`RYB(196, 212, 143)`

Have a look what the booklet for
RYB(196, 212, 143) contains.

RYB(196, 212, 143)	3
<i>Conversions</i>	4
<i>Details</i>	6
<i>Harmonies</i>	11
<i>Previews</i>	23
<i>Color Blindness Simulation</i>	26
<i>CSS Examples</i>	29

Color

R_YB(196, 212, 143)

Conversions

Conversions Part 1

Format	Color
Hex	D4B68F
RGB	212, 182, 143
RGB Percent	83%, 71%, 56%
CMY	0.1686, 0.2862, 0.4392
CMYK	0.00, 0.14, 0.33, 0.17
HSL	34°, 45%, 70%
HSV	34°, 33%, 83%
XYZ	48.8423, 49.4462, 32.9564
YIQ	186.5240, 30.3990, -5.7690

Conversions

Conversions Part 2

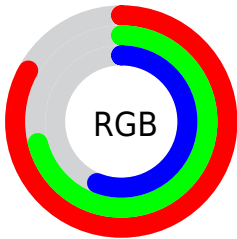
Format	Color
R_{YB}	196, 212, 143
Decimal	13940367
CIE _{Lab}	75.73, 5.11, 23.87
CIE _{LCh}	76, 24.409, 77.920
Yxy	49.4462, 0.3721, 0.3767
Android (android.graphics.Color)	4292130447 (0xFFD4B68F)
YUV	186.5240, -21.4573, 22.3425
Hunter-Lab	70.3180, 0.9281, 21.4347

Details

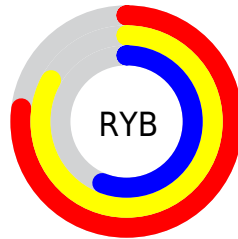
The RYB color **196, 212, 143** is a light color, and the websafe version is hex **FFCC99**. A complement of this color would be **143, 164, 212**, and the grayscale version is **187, 187, 187**.

A 20% lighter version of the original color is **221, 255, 197**, and **139, 156, 92** is the 20% darker color. If you saturate the color by 10%, you get **191, 212, 122**, and if you desaturate by 10%, it is **201, 212, 164**.

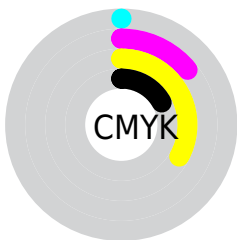
Distribution



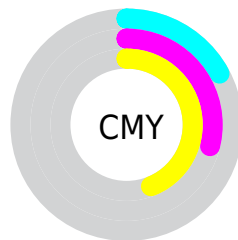
- Red (83%)
- Green (71%)
- Blue (56%)



- Red (77%)
- Yellow (83%)
- Blue (56%)



- Cyan (0%)
- Magenta (14%)
- Yellow (33%)
- Black (17%)



- Cyan (17%)
- Magenta (29%)
- Yellow (44%)

Brightness & Saturation Gradients

These gradients show how the RYB color 196, 212, 143 changes by changing the brightness by 10 percent. The first figure shows a shift by +10% for each color and the second figure -10%.

Similar to the brightness gradients but the following saturation gradients show a change of the RYB color 196, 212, 143 by changing the saturation by 10% instead.

 196, 212, 143

255, 255, 255

 221, 255, 197


 225, 255, 225

254, 255, 254

 196, 212, 143

 168, 184, 117

 139, 156, 92

 114, 130, 69

 87, 104, 46

 58, 78, 24

 29, 55, 0

 31, 29, 0

 0, 0, 0

 196, 212, 143

 196, 212, 143

 191, 212, 122

 201, 212, 164

 186, 212, 101


 207, 212, 185

 182, 212, 79

 210, 212, 207

 177, 212, 58

 212, 217, 228

 171, 212, 37

 212, 223, 249

 166, 212, 16

 212, 228, 255

 163, 212, 0

 212, 231, 255

 212, 234, 255

Harmonies

Analogous

The Analogous color harmony consists of three colors that are next to each other on the color wheel.



228, 183, 154



196, 212, 143



144, 189, 144

Triad

The Triadic color harmony groups three colors that are evenly spaced from another and form a triangle on the color wheel.



196, 212, 143



124, 162, 200



207, 176, 217

Complementary

The Complementary color scheme is a pair of colors which are on the opposite of each other on the color wheel.



196, 212, 143



143, 164, 212

Split Complementary

Split-complementary colors differ from the complementary color scheme. The scheme consists of three colors, the original color and two neighbors of the complement color.



178, 183, 229



196, 212, 143



126, 166, 219

Square

The Square scheme is like the rectangle color scheme, but the four colors are evenly spaced on the color wheel.



196, 212, 143



139, 176, 199



148, 176, 230



226, 171, 197

Rectangle

The Rectangle color scheme consists of four colors that form a rectangle on the color wheel.



196, 212, 143



151, 194, 173



148, 176, 230



198, 179, 222

Sweetspot

The Sweet Spot groups the original color and five complimentary colors.



196, 212, 143



250, 255, 230



212, 143, 174



124, 128, 112



0, 0, 0



128, 128, 128

Same Dimension

The Same Dimension uses a secret algorithm to generate beautiful new colors.



196, 212, 143



232, 255, 156



143, 212, 146



105, 107, 96



130, 171, 0



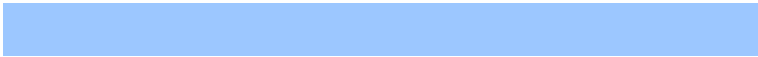
31, 43, 0

Inverse Universe

The Inverse Universe completely reimagines the original color for something new.



143, 164, 212



156, 186, 255



146, 143, 212



96, 99, 107



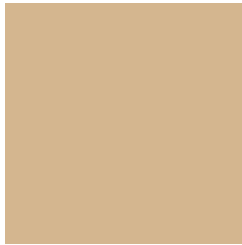
0, 52, 171



0, 13, 43

Previews

White Background



This preview shows how the RYB color 196, 212, 143 looks on a white background.

Color Contrast Check

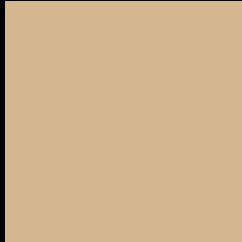
Large Text (above 18pt) WCAG AA × Fail

Any Text WCAG AA × Fail

Large Text (above 18pt) WCAG AAA × Fail

Any Text WCAG AAA × Fail

Black Background



This preview shows how the RYB color 196, 212, 143 looks on a black background.

Color Contrast Check

Large Text (above 18pt) WCAG AA ✓ Pass

Any Text WCAG AA ✓ Pass

Large Text (above 18pt) WCAG AAA ✓ Pass

Any Text WCAG AAA ✓ Pass

If you want to check with other color combinations, try the [Color Contrast Checker](#).

RYB 196, 212, 143 Background



This preview shows how black text looks on a background with the RYB color 196, 212, 143.



This preview shows how white text looks on a background with the RYB color 196, 212, 143.

Color Blindness Simulation

Color vision deficiency is a very complex topic, and I could not describe the different causes any better than Wikipedia does, so if you want to learn more, you should check out their [article about color blindness](#).


Dichromacy



Original Color
196, 212, 143

Protanopia
162, 199, 145

Deuteranopia
219, 210, 144



Tritanopia
217, 176, 189

Trichromacy



Monochromacy



CSS Examples

Text

The CSS property to change the color of the text to RYB 196, 212, 143 is called "color". The color property can be set on classes, ids or directly on the HTML element.

This example shows how text in the color rgb(212, 182, 143) looks like.

```
.text, #text, p{  
    color:rgb(212, 182, 143)  
}
```

If you want to add a text shadow in that color use the text-shadow property, you can generate a text shadow directly with our [CSS Text Shadow Generator](#).

Here you see how black text with a 4 pixel rgb(212, 182, 143) colored shadow looks like.

```
.shadow{ text-shadow: 4px 4px 2px rgb(212, 182, 143) }
```

Border

The CSS property to change the border of an element to RYB 196, 212, 143 is called "border". The border property can be set on classes, ids or directly on the HTML element.

This example shows the color as border, it can be applied via the CSS property "border" or "border-color".

```
.border, #border, table{ border:4px solid rgb(212, 182, 143) }
```

If only the border color should be changed use the property border-color.

```
.border{ border-color:rgb(212, 182, 143) }
```

If you want to add a box shadow in that color use:

Here you see how a box with a 4 pixel rgb(212, 182, 143) colored shadow looks like.

```
.boxshadow{ -moz-box-shadow:4px 4px 4px  
4px rgb(212, 182, 143); -webkit-box-  
shadow:4px 4px 4px 4px rgb(212, 182, 143);  
box-shadow:4px 4px 4px 4px rgb(212, 182,  
143) }
```

Background

The CSS property to change the background color of an element to RYB 196, 212, 143 is called "background". The background property can be set on classes, ids or directly on the HTML element.

```
.background, #background, body{  
background: rgb(212, 182, 143) }
```

If only the background color should be changed can be used:

```
.background{ background-color: rgb(212,  
182, 143) }
```

This example shows the color as background, it is applied via the CSS property "background".

To optimize and compress your CSS code, you can use our [online CSS compressor and optimizer](#) based on csstidy. If you want to create a linear or radial gradient as background or border, check our [CSS Gradient Generator](#).

Hey! You found this booklet interesting? Support Converting Colors with the new Membership Option!

The pro membership hides all ads, plus gives you double the colors in the color bucket, and more awesome pro features!

[Learn more, Memberships starting at \\$2.50/m!](#)

**Follow me
on Twitter!**

@ConvertingColor