

Converting Colors

`RYB(197, 160, 153)`

Have a look what the booklet for
RYB(197, 160, 153) contains.

RYB(197, 160, 153)	3
<i>Conversions</i>	4
<i>Details</i>	6
<i>Harmonies</i>	11
<i>Previews</i>	23
<i>Color Blindness Simulation</i>	26
<i>CSS Examples</i>	29

Color

R_YB(197, 160, 153)

Conversions

Conversions Part 1

Format	Color
Hex	C59F99
RGB	197, 159, 153
RGB Percent	77%, 62%, 60%
CMY	0.2275, 0.3763, 0.4000
CMYK	0.00, 0.19, 0.22, 0.23
HSL	8°, 28%, 69%
HSV	8°, 22%, 77%
XYZ	41.1806, 38.9800, 35.4904
YIQ	169.6780, 24.5740, 6.1900

Conversions

Conversions Part 2

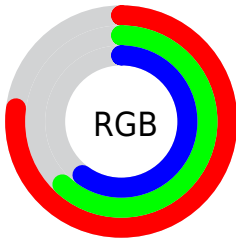
Format	Color
RYB	197, 160, 153
Decimal	12951449
CIELab	68.74, 13.10, 8.46
CIELCh	69, 15.593, 32.845
Yxy	38.9800, 0.3561, 0.3370
Android (android.graphics.Color)	4291141529 (0xFFC59F99)
YUV	169.6780, -8.2223, 23.9614
Hunter-Lab	62.4340, 8.4768, 10.0005

Details

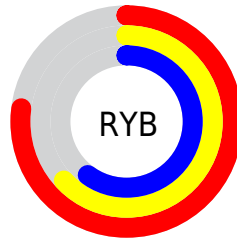
The RYB color **197, 160, 153** is a light color, and the websafe version is hex **CC9999**. A complement of this color would be **153, 173, 197**, and the grayscale version is **170, 170, 170**.

A 20% lighter version of the original color is **254, 215, 207**, and **143, 108, 102** is the 20% darker color. If you saturate the color by 10%, you get **197, 143, 133**, and if you desaturate by 10%, it is **197, 176, 173**.

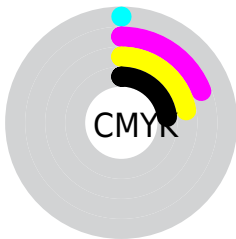
Distribution



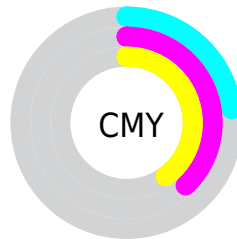
- Red (77%)
- Green (62%)
- Blue (60%)



- Red (77%)
- Yellow (63%)
- Blue (60%)



- Cyan (0%)
- Magenta (19%)
- Yellow (22%)
- Black (23%)



- Cyan (23%)
- Magenta (38%)
- Yellow (40%)

Brightness & Saturation Gradients

These gradients show how the RYB color 197, 160, 153 changes by changing the brightness by 10 percent. The first figure shows a shift by +10% for each color and the second figure -10%.


Similar to the brightness gradients but the following saturation gradients show a change of the RYB color 197, 160, 153 by changing the saturation by 10% instead.

 197, 160, 153

255, 255, 255

 254, 215, 207


 255, 245, 236

 197, 160, 153

 169, 134, 127

 143, 109, 102

 116, 84, 78

 91, 61, 55

 67, 39, 34


 44, 18, 12

 18, 0, 0

 0, 0, 0

 197, 160, 153

 197, 160, 153

 197, 143, 133

 197, 176, 173

 197, 127, 114

 197, 193, 192

 197, 110, 94

 197, 204, 212

 197, 94, 74

 197, 213, 232

 197, 77, 55

 197, 222, 252

 197, 60, 35

 197, 226, 255

 197, 44, 15

 197, 31, 0

Harmonies

Analogous

The Analogous color harmony consists of three colors that are next to each other on the color wheel.



196, 158, 167



197, 160, 153



190, 178, 143

Triad

The Triadic color harmony groups three colors that are evenly spaced from another and form a triangle on the color wheel.



197, 160, 153



146, 169, 175



154, 165, 196

Complementary

The Complementary color scheme is a pair of colors which are on the opposite of each other on the color wheel.



197, 160, 153



153, 173, 197

Split Complementary

Split-complementary colors differ from the complementary color scheme. The scheme consists of three colors, the original color and two neighbors of the complement color.



138, 159, 192



197, 160, 153



134, 157, 176

Square

The Square scheme is like the rectangle color scheme, but the four colors are evenly spaced on the color wheel.



197, 160, 153



144, 171, 153



131, 155, 182



172, 164, 191

Rectangle

The Rectangle color scheme consists of four colors that form a rectangle on the color wheel.



197, 160, 153



166, 182, 140



131, 155, 182



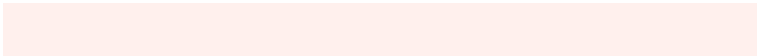
148, 163, 195

Sweetspot

The Sweet Spot groups the original color and five complimentary colors.



197, 160, 153



255, 241, 237



197, 153, 191



128, 119, 117



0, 0, 0



128, 128, 128

Same Dimension

The Same Dimension uses a secret algorithm to generate beautiful new colors.



197, 160, 153



255, 198, 186



178, 197, 153



99, 91, 90



163, 25, 0



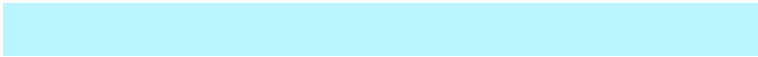
36, 6, 0

Inverse Universe

The Inverse Universe completely reimagines the original color for something new.



153, 173, 197



186, 218, 255



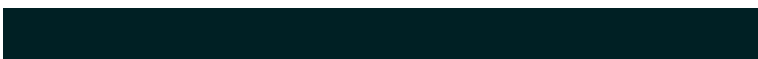
153, 165, 197



90, 94, 99



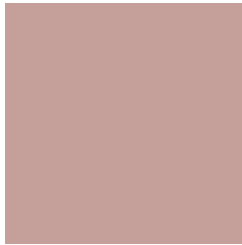
0, 76, 163



0, 17, 36

Previews

White Background



This preview shows how the RYB color 197, 160, 153 looks on a white background.

Color Contrast Check

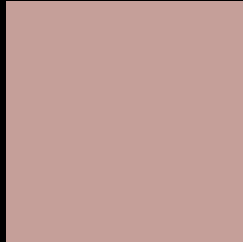
Large Text (above 18pt) WCAG AA × Fail

Any Text WCAG AA × Fail

Large Text (above 18pt) WCAG AAA × Fail

Any Text WCAG AAA × Fail

Black Background



This preview shows how the RYB color 197, 160, 153 looks on a black background.

Color Contrast Check

Large Text (above 18pt) WCAG AA ✓ Pass

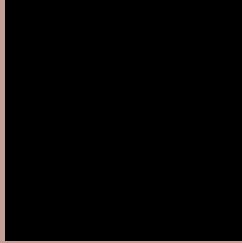
Any Text WCAG AA ✓ Pass

Large Text (above 18pt) WCAG AAA ✓ Pass

Any Text WCAG AAA ✓ Pass

If you want to check with other color combinations, try the [Color Contrast Checker](#).

RYP 197, 160, 153 Background



This preview shows how black text looks on a background with the RYB color 197, 160, 153.



This preview shows how white text looks on a background with the RYB color 197, 160, 153.

Color Blindness Simulation

Color vision deficiency is a very complex topic, and I could not describe the different causes any better than Wikipedia does, so if you want to learn more, you should check out their [article about color blindness](#).


Dichromacy



Original Color
197, 160, 153

Protanopia
167, 173, 157

Deuteranopia
190, 166, 152



Tritanopia
199, 157, 169

Trichromacy



Original Color
197, 160, 153

Protanomaly
182, 168, 156

Deuteranomaly
193, 164, 152

Tritanomaly
198, 158, 163

Monochromacy



Original Color
197, 160, 153

Achromatopsia
170, 170, 170

Achromatomaly
180, 166, 164

CSS Examples

Text

The CSS property to change the color of the text to RYB 197, 160, 153 is called "color". The color property can be set on classes, ids or directly on the HTML element.

This example shows how text in the color `rgb(197, 159, 153)` looks like.

```
.text, #text, p{  
    color:rgb(197, 159, 153)  
}
```

If you want to add a text shadow in that color use the text-shadow property, you can generate a text shadow directly with our [CSS Text Shadow Generator](#).

Here you see how black text with a 4 pixel rgb(197, 159, 153) colored shadow looks like.

```
.shadow{ text-shadow: 4px 4px 2px rgb(197, 159, 153) }
```

Border

The CSS property to change the border of an element to RYB 197, 160, 153 is called "border". The border property can be set on classes, ids or directly on the HTML element.

This example shows the color as border, it can be applied via the CSS property "border" or "border-color".

```
.border, #border, table{ border:4px solid rgb(197, 159, 153) }
```

If only the border color should be changed use the property `border-color`.

```
.border{ border-color:rgb(197, 159, 153) }
```

If you want to add a box shadow in that color use:

Here you see how a box with a 4 pixel `rgb(197, 159, 153)` colored shadow looks like.

```
.boxshadow{ -moz-box-shadow:4px 4px 4px  
4px rgb(197, 159, 153); -webkit-box-  
shadow:4px 4px 4px 4px rgb(197, 159, 153);  
box-shadow:4px 4px 4px 4px rgb(197, 159,  
153) }
```

Background

The CSS property to change the background color of an element to RYB 197, 160, 153 is called "background". The background property can be set on classes, ids or directly on the HTML element.

```
.background, #background, body{  
background: rgb(197, 159, 153) }
```

If only the background color should be changed can be used:

```
.background{ background-color: rgb(197,  
159, 153) }
```

This example shows the color as background, it is applied via the CSS property "background".

To optimize and compress your CSS code, you can use our [online CSS compressor and optimizer](#) based on csstidy. If you want to create a linear or radial gradient as background or border, check our [CSS Gradient Generator](#).

Hey! You found this booklet interesting? Support Converting Colors with the new Membership Option!

The pro membership hides all ads, plus gives you double the colors in the color bucket, and more awesome pro features!

[Learn more, Memberships starting at \\$2.50/m!](#)

**Follow me
on Twitter!**

@ConvertingColor