

Converting Colors

`RYB(197, 161, 158)`

Have a look what the booklet for
RYB(197, 161, 158) contains.

RYB(197, 161, 158)	3
<i>Conversions</i>	4
<i>Details</i>	6
<i>Harmonies</i>	11
<i>Previews</i>	23
<i>Color Blindness Simulation</i>	26
<i>CSS Examples</i>	29

Color

$\text{RYB}(197, 161, 158)$

Conversions

Conversions Part 1

Format	Color
Hex	C5A19E
RGB	197, 161, 158
RGB Percent	77%, 63%, 62%
CMY	0.2275, 0.3695, 0.3804
CMYK	0.00, 0.18, 0.20, 0.23
HSL	4°, 25%, 70%
HSV	4°, 20%, 77%
XYZ	41.9050, 39.7538, 37.8124
YIQ	171.4220, 22.4190, 6.6990

Conversions

Conversions Part 2

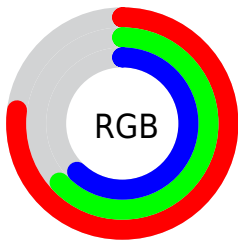
Format	Color
RYB	197, 161, 158
Decimal	12951966
CIELab	69.29, 12.90, 6.48
CIELCh	69, 14.440, 26.660
Yxy	39.7538, 0.3508, 0.3327
Android (android.graphics.Color)	4291142046 (0xFFC5A19E)
YUV	171.4220, -6.6170, 22.4319
Hunter-Lab	63.0506, 8.2967, 8.5784

Details

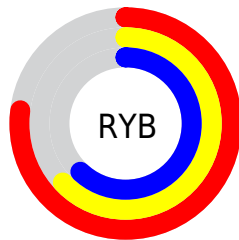
The RYB color **197, 161, 158** is a light color, and the websafe version is hex **CC9999**. A complement of this color would be **158, 177, 197**, and the grayscale version is **171, 171, 171**.

A 20% lighter version of the original color is **254, 216, 213**, and **143, 109, 107** is the 20% darker color. If you saturate the color by 10%, you get **197, 142, 138**, and if you desaturate by 10%, it is **197, 179, 178**.

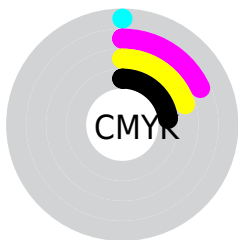
Distribution



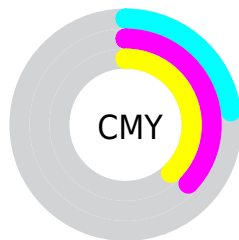
- Red (77%)
- Green (63%)
- Blue (62%)



- Red (77%)
- Yellow (63%)
- Blue (62%)



- Cyan (0%)
- Magenta (18%)
- Yellow (20%)
- Black (23%)



- Cyan (23%)
- Magenta (37%)
- Yellow (38%)

Brightness & Saturation Gradients

These gradients show how the RYB color 197, 161, 158 changes by changing the brightness by 10 percent. The first figure shows a shift by +10% for each color and the second figure -10%.


Similar to the brightness gradients but the following saturation gradients show a change of the RYB color 197, 161, 158 by changing the saturation by 10% instead.

 197, 161, 158

255, 255, 255

 254, 216, 213


 255, 245, 241

 197, 161, 158

 169, 135, 132

 143, 109, 107

 117, 85, 83

 91, 61, 60

 67, 39, 38

 44, 19, 17

 22, 0, 0


 0, 0, 0

 197, 161, 158

 197, 161, 158

 197, 142, 138

 197, 179, 178

 197, 124, 119

 197, 197, 197

 197, 107, 99

 197, 207, 217

 197, 89, 79

 197, 216, 237

 197, 70, 60

 197, 225, 255

 197, 52, 40

 197, 226, 255

 197, 34, 20

 197, 15, 0

Harmonies

Analogous

The Analogous color harmony consists of three colors that are next to each other on the color wheel.



195, 160, 171



197, 161, 158



192, 173, 148

Triad

The Triadic color harmony groups three colors that are evenly spaced from another and form a triangle on the color wheel.



197, 161, 158



152, 173, 175



153, 166, 195

Complementary

The Complementary color scheme is a pair of colors which are on the opposite of each other on the color wheel.



197, 161, 158



158, 177, 197

Split Complementary

Split-complementary colors differ from the complementary color scheme. The scheme consists of three colors, the original color and two neighbors of the complement color.



140, 160, 191



197, 161, 158



140, 161, 177

Square

The Square scheme is like the rectangle color scheme, but the four colors are evenly spaced on the color wheel.



197, 161, 158



146, 172, 151



135, 157, 180



170, 166, 192

Rectangle

The Rectangle color scheme consists of four colors that form a rectangle on the color wheel.



197, 161, 158



179, 185, 144



135, 157, 180



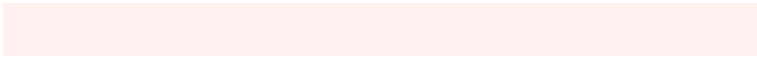
148, 164, 194

Sweetspot

The Sweet Spot groups the original color and five complimentary colors.



197, 161, 158



255, 241, 240



197, 158, 194



128, 119, 119



0, 0, 0



128, 128, 128

Same Dimension

The Same Dimension uses a secret algorithm to generate beautiful new colors.



197, 161, 158



255, 198, 194



188, 197, 158



99, 90, 90



163, 13, 0



36, 3, 0

Inverse Universe

The Inverse Universe completely reimagines the original color for something new.



158, 177, 197



194, 223, 255



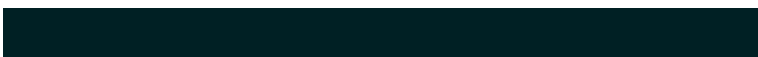
158, 170, 197



90, 95, 99



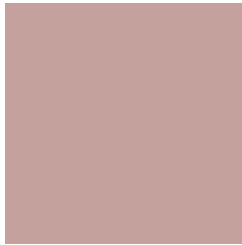
0, 79, 163



0, 17, 36

Previews

White Background



This preview shows how the RYB color 197, 161, 158 looks on a white background.

Color Contrast Check

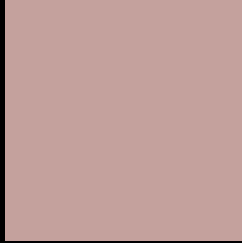
Large Text (above 18pt) WCAG AA × Fail

Any Text WCAG AA × Fail

Large Text (above 18pt) WCAG AAA × Fail

Any Text WCAG AAA × Fail

Black Background



This preview shows how the RYB color 197, 161, 158 looks on a black background.

Color Contrast Check

Large Text (above 18pt) WCAG AA ✓ Pass

Any Text WCAG AA ✓ Pass

Large Text (above 18pt) WCAG AAA ✓ Pass

Any Text WCAG AAA ✓ Pass

If you want to check with other color combinations, try the [Color Contrast Checker](#).

RYB 197, 161, 158 Background



This preview shows how black text looks on a background with the RYB color 197, 161, 158.





This preview shows how white text looks on a background with the RYB color 197, 161, 158.

Color Blindness Simulation

Color vision deficiency is a very complex topic, and I could not describe the different causes any better than Wikipedia does, so if you want to learn more, you should check out their [article about color blindness](#).

Dichromacy

	Original Color 197, 161, 158
	Protanopia 171, 174, 162
	Deuteranopia 190, 164, 157



Tritanopia
199, 159, 171

Trichromacy



Original Color
197, 161, 158

Protanomaly
182, 168, 161

Deuteranomaly
193, 163, 157

Tritanomaly
198, 160, 166

Monochromacy



Original Color
197, 161, 158

Achromatopsia
171, 171, 171

Achromatomaly
180, 167, 166

CSS Examples

Text

The CSS property to change the color of the text to RYB 197, 161, 158 is called "color". The color property can be set on classes, ids or directly on the HTML element.

This example shows how text in the color rgb(197, 161, 158) looks like.

```
.text, #text, p{  
    color:rgb(197, 161, 158)  
}
```

If you want to add a text shadow in that color use the text-shadow property, you can generate a text shadow directly with our [CSS Text Shadow Generator](#).

Here you see how black text with a 4 pixel rgb(197, 161, 158) colored shadow looks like.

```
.shadow{ text-shadow: 4px 4px 2px rgb(197, 161, 158) }
```

Border

The CSS property to change the border of an element to RYB 197, 161, 158 is called "border". The border property can be set on classes, ids or directly on the HTML element.

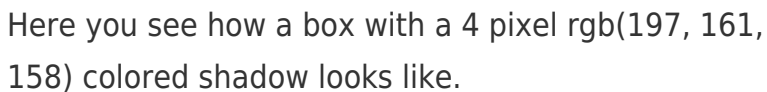
This example shows the color as border, it can be applied via the CSS property "border" or "border-color".

```
.border, #border, table{ border:4px solid rgb(197, 161, 158) }
```

If only the border color should be changed use the property `border-color`.

```
.border{ border-color:rgb(197, 161, 158) }
```

If you want to add a box shadow in that color use:



Here you see how a box with a 4 pixel `rgb(197, 161, 158)` colored shadow looks like.

```
.boxshadow{ -moz-box-shadow:4px 4px 4px 4px rgb(197, 161, 158); -webkit-box-shadow:4px 4px 4px 4px rgb(197, 161, 158); box-shadow:4px 4px 4px 4px rgb(197, 161, 158) }
```

Background

The CSS property to change the background color of an element to RYB 197, 161, 158 is called "background". The background property can be set on classes, ids or directly on the HTML element.

```
.background, #background, body{  
background: rgb(197, 161, 158) }
```

If only the background color should be changed can be used:

```
.background{ background-color: rgb(197,  
161, 158) }
```

This example shows the color as background, it is applied via the CSS property "background".

To optimize and compress your CSS code, you can use our [online CSS compressor and optimizer](#) based on csstidy. If you want to create a linear or radial gradient as background or border, check our [CSS Gradient Generator](#).

Hey! You found this booklet interesting? Support Converting Colors with the new Membership Option!

The pro membership hides all ads, plus gives you double the colors in the color bucket, and more awesome pro features!

[Learn more, Memberships starting at \\$2.50/m!](#)

**Follow me
on Twitter!**

@ConvertingColor