

Converting Colors

`RYB(197, 174, 181)`

Have a look what the booklet for
RYB(197, 174, 181) contains.

RYB(197, 174, 181)	3
<i>Conversions</i>	4
<i>Details</i>	6
<i>Harmonies</i>	11
<i>Previews</i>	23
<i>Color Blindness Simulation</i>	26
<i>CSS Examples</i>	29

Color

R_YB(197, 174, 181)

Conversions

Conversions Part 1

Format	Color
Hex	C5AEB5
RGB	197, 174, 181
RGB Percent	77%, 68%, 71%
CMY	0.2275, 0.3176, 0.2902
CMYK	0.00, 0.12, 0.08, 0.23
HSL	342°, 17%, 73%
HSV	342°, 12%, 77%
XYZ	46.5025, 45.4786, 50.0434
YIQ	181.6750, 11.4610, 7.0530

Conversions

Conversions Part 2

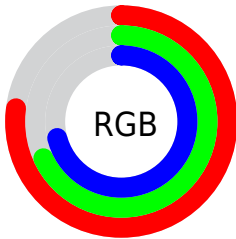
Format	Color
RYB	197, 174, 181
Decimal	12955317
CIELab	73.21, 9.48, -0.54
CIELCh	73, 9.495, 356.730
Yxy	45.4786, 0.3274, 0.3202
Android (android.graphics.Color)	4291145397 (0xFFC5AEB5)
YUV	181.6750, -0.3328, 13.4400
Hunter-Lab	67.4378, 5.0704, 3.2094

Details

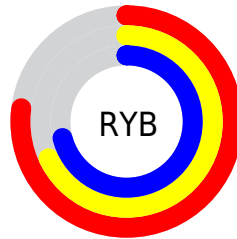
The RYB color **197, 174, 181** is a light color, and the websafe version is hex **CCCCCC**. A complement of this color would be **174, 188, 197**, and the grayscale version is **182, 182, 182**.

A 20% lighter version of the original color is **254, 229, 237**, and **143, 122, 128** is the 20% darker color. If you saturate the color by 10%, you get **197, 154, 167**, and if you desaturate by 10%, it is **197, 194, 195**.

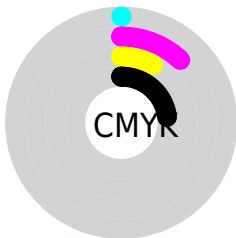
Distribution



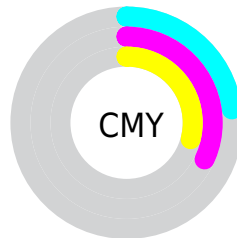
- Red (77%)
- Green (68%)
- Blue (71%)



- Red (77%)
- Yellow (68%)
- Blue (71%)



- Cyan (0%)
- Magenta (12%)
- Yellow (8%)
- Black (23%)



- Cyan (23%)
- Magenta (32%)
- Yellow (29%)

Brightness & Saturation Gradients

These gradients show how the RYB color 197, 174, 181 changes by changing the brightness by 10 percent. The first figure shows a shift by +10% for each color and the second figure -10%.

Similar to the brightness gradients but the following saturation gradients show a change of the RYB color 197, 174, 181 by changing the saturation by 10% instead.

 197, 174, 181

255, 255, 255

 254, 229, 237

 197, 174, 181

 170, 147, 154

 143, 122, 128

 117, 97, 103

 93, 73, 79

 69, 50, 56

 46, 29, 35

 27, 4, 13


 0, 0, 0

 197, 174, 181


 197, 174, 181

 197, 154, 167

 197, 194, 195

 197, 135, 154

 197, 206, 213

 197, 115, 140

 197, 218, 233

 197, 95, 126

 197, 230, 253

 197, 76, 112

 197, 227, 255

 197, 56, 99

 197, 226, 255

 197, 36, 85

 197, 16, 71

 197, 0, 60

Harmonies

Analogous

The Analogous color harmony consists of three colors that are next to each other on the color wheel.



190, 175, 189



197, 174, 181



199, 174, 172

Triad

The Triadic color harmony groups three colors that are evenly spaced from another and form a triangle on the color wheel.



197, 174, 181



164, 182, 168



161, 174, 194

Complementary

The Complementary color scheme is a pair of colors which are on the opposite of each other on the color wheel.



197, 174, 181



174, 188, 197

Split Complementary

Split-complementary colors differ from the complementary color scheme. The scheme consists of three colors, the original color and two neighbors of the complement color.



158, 172, 187



197, 174, 181



168, 182, 184

Square

The Square scheme is like the rectangle color scheme, but the four colors are evenly spaced on the color wheel.



197, 174, 181



177, 188, 163



161, 175, 185



170, 178, 197

Rectangle

The Rectangle color scheme consists of four colors that form a rectangle on the color wheel.



197, 174, 181



197, 178, 167



161, 175, 185



160, 174, 192

Sweetspot

The Sweet Spot groups the original color and five complimentary colors.



197, 174, 181



255, 245, 248



190, 174, 197



128, 121, 123



0, 0, 0



128, 128, 128

Same Dimension

The Same Dimension uses a secret algorithm to generate beautiful new colors.



197, 174, 181



255, 219, 230



197, 179, 174



99, 90, 93



163, 0, 50



36, 0, 11

Inverse Universe

The Inverse Universe completely reimagines the original color for something new.



197, 174, 181



255, 219, 230



174, 184, 197



99, 90, 93



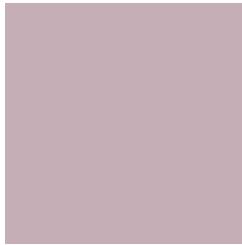
163, 0, 50



36, 0, 11

Previews

White Background



This preview shows how the RYB color 197, 174, 181 looks on a white background.

Color Contrast Check

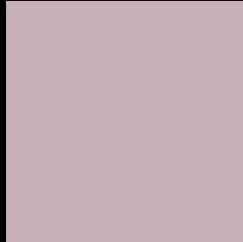
Large Text (above 18pt) WCAG AA × Fail

Any Text WCAG AA × Fail

Large Text (above 18pt) WCAG AAA × Fail

Any Text WCAG AAA × Fail

Black Background



This preview shows how the RYB color 197, 174, 181 looks on a black background.

Color Contrast Check

Large Text (above 18pt) WCAG AA ✓ Pass

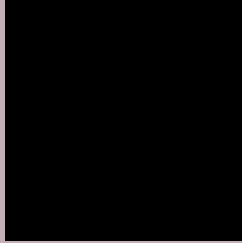
Any Text WCAG AA ✓ Pass

Large Text (above 18pt) WCAG AAA ✓ Pass

Any Text WCAG AAA ✓ Pass

If you want to check with other color combinations, try the [Color Contrast Checker](#).

RYB 197, 174, 181 Background



This preview shows how black text looks on a background with the RYB color 197, 174, 181.



This preview shows how white text looks on a background with the RYB color 197, 174, 181.

Color Blindness Simulation

Color vision deficiency is a very complex topic, and I could not describe the different causes any better than Wikipedia does, so if you want to learn more, you should check out their [article about color blindness](#).

Dichromacy



Original Color
197, 174, 181

Protanopia
182, 179, 184

Deuteranopia
197, 174, 181



Tritanopia
198, 173, 187

Trichromacy



Original Color

197, 174, 181

Protanomaly

187, 177, 183

Deuteranomaly

197, 174, 181

Tritanomaly

198, 173, 185

Monochromacy



Original Color

197, 174, 181

Achromatopsia

182, 182, 182

Achromatomaly

187, 179, 182

CSS Examples

Text

The CSS property to change the color of the text to RYB 197, 174, 181 is called "color". The color property can be set on classes, ids or directly on the HTML element.

This example shows how text in the color rgb(197, 174, 181) looks like.

```
.text, #text, p{  
    color:rgb(197, 174, 181)  
}
```

If you want to add a text shadow in that color use the text-shadow property, you can generate a text shadow directly with our [CSS Text Shadow Generator](#).

Here you see how black text with a 4 pixel rgb(197, 174, 181) colored shadow looks like.

```
.shadow{ text-shadow: 4px 4px 2px rgb(197, 174, 181) }
```

Border

The CSS property to change the border of an element to RYB 197, 174, 181 is called "border". The border property can be set on classes, ids or directly on the HTML element.

This example shows the color as border, it can be applied via the CSS property "border" or "border-color".

```
.border, #border, table{ border:4px solid rgb(197, 174, 181) }
```

If only the border color should be changed use the property `border-color`.

```
.border{ border-color:rgb(197, 174, 181) }
```

If you want to add a box shadow in that color use:

Here you see how a box with a 4 pixel `rgb(197, 174, 181)` colored shadow looks like.

```
.boxshadow{ -moz-box-shadow:4px 4px 4px  
4px rgb(197, 174, 181); -webkit-box-  
shadow:4px 4px 4px 4px rgb(197, 174, 181);  
box-shadow:4px 4px 4px 4px rgb(197, 174,  
181) }
```

Background

The CSS property to change the background color of an element to RYB 197, 174, 181 is called "background". The background property can be set on classes, ids or directly on the HTML element.

```
.background, #background, body{  
background: rgb(197, 174, 181) }
```

If only the background color should be changed can be used:

```
.background{ background-color: rgb(197,  
174, 181) }
```

This example shows the color as background, it is applied via the CSS property "background".

To optimize and compress your CSS code, you can use our [online CSS compressor and optimizer](#) based on csstidy. If you want to create a linear or radial gradient as background or border, check our [CSS Gradient Generator](#).

Hey! You found this booklet interesting? Support Converting Colors with the new Membership Option!

The pro membership hides all ads, plus gives you double the colors in the color bucket, and more awesome pro features!

[Learn more, Memberships starting at \\$2.50/m!](#)

**Follow me
on Twitter!**

@ConvertingColor