

Converting Colors

`RYB(197, 182, 174)`

Have a look what the booklet for
RYB(197, 182, 174) contains.

RYB(197, 182, 174)	3
<i>Conversions</i>	4
<i>Details</i>	6
<i>Harmonies</i>	11
<i>Previews</i>	23
<i>Color Blindness Simulation</i>	26
<i>CSS Examples</i>	29

Color

$\text{RYB}(197, 182, 174)$

Conversions

Conversions Part 1

Format	Color
Hex	C5B4AE
RGB	197, 180, 174
RGB Percent	77%, 71%, 68%
CMY	0.2275, 0.2944, 0.3176
CMYK	0.00, 0.09, 0.12, 0.23
HSL	15°, 17%, 73%
HSV	15°, 12%, 77%
XYZ	46.9742, 47.5428, 46.7453
YIQ	184.3990, 12.0580, 1.7380

Conversions

Conversions Part 2

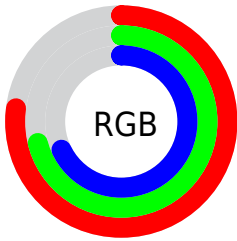
Format	Color
RYB	197, 182, 174
Decimal	12956846
CIELab	74.54, 5.08, 5.22
CIELCh	75, 7.280, 45.799
Yxy	47.5428, 0.3325, 0.3366
Android (android.graphics.Color)	4291146926 (0xFFC5B4AE)
YUV	184.3990, -5.1267, 11.0511
Hunter-Lab	68.9513, 0.9413, 8.0704

Details

The RYB color **197, 182, 174** is a light color, and the websafe version is hex **CCCCCC**. A complement of this color would be **174, 184, 197**, and the grayscale version is **184, 184, 184**.

A 20% lighter version of the original color is **254, 239, 229**, and **143, 129, 122** is the 20% darker color. If you saturate the color by 10%, you get **197, 169, 154**, and if you desaturate by 10%, it is **197, 196, 194**.

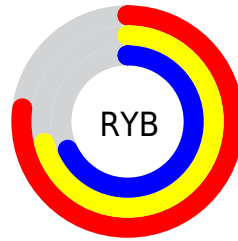
Distribution



Red (77%)

Green (71%)

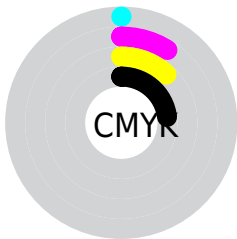
Blue (68%)



Red (77%)

Yellow (71%)

Blue (68%)

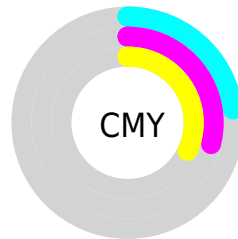


Cyan (0%)

Magenta (9%)

Yellow (12%)

Black (23%)



Cyan (23%)

Magenta (29%)

Yellow (32%)

Brightness & Saturation Gradients

These gradients show how the RYB color 197, 182, 174 changes by changing the brightness by 10 percent. The first figure shows a shift by +10% for each color and the second figure -10%.

Similar to the brightness gradients but the following saturation gradients show a change of the RYB color 197, 182, 174 by changing the saturation by 10% instead.

■ 197, 182, 174

255, 255, 255

■ 254, 239, 229

■ 197, 182, 174

■ 170, 155, 147

■ 143, 129, 122

■ 117, 104, 97

■ 93, 80, 73

■ 69, 56, 51

■ 46, 35, 30

■ 27, 16, 4

■ 0, 0, 0

■ 197, 182, 174

■ 197, 182, 174

■ 197, 169, 154

■ 197, 196, 194

■ 197, 157, 135

■ 197, 204, 213

■ 197, 143, 115

■ 197, 212, 233

■ 197, 130, 95

■ 197, 221, 253

■ 197, 118, 76

■ 197, 225, 255

■ 197, 104, 56

■ 197, 226, 255

■ 197, 93, 36

■ 197, 79, 16

■ 197, 69, 0

Harmonies

Analogous

The Analogous color harmony consists of three colors that are next to each other on the color wheel.



198, 179, 180



197, 182, 174



190, 192, 171

Triad

The Triadic color harmony groups three colors that are evenly spaced from another and form a triangle on the color wheel.



197, 182, 174



171, 181, 187



181, 183, 196

Complementary

The Complementary color scheme is a pair of colors which are on the opposite of each other on the color wheel.



197, 182, 174



174, 184, 197

Split Complementary

Split-complementary colors differ from the complementary color scheme. The scheme consists of three colors, the original color and two neighbors of the complement color.



173, 181, 196



197, 182, 174



167, 177, 187

Square

The Square scheme is like the rectangle color scheme, but the four colors are evenly spaced on the color wheel.



197, 182, 174



174, 186, 183



168, 179, 193



189, 181, 193

Rectangle

The Rectangle color scheme consists of four colors that form a rectangle on the color wheel.



197, 182, 174



177, 188, 170



168, 179, 193



178, 182, 197

Sweetspot

The Sweet Spot groups the original color and five complimentary colors.



197, 182, 174



255, 248, 245



197, 174, 191



128, 124, 121



0, 0, 0



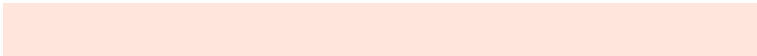
128, 128, 128

Same Dimension

The Same Dimension uses a secret algorithm to generate beautiful new colors.



197, 182, 174



255, 233, 219



182, 197, 174



99, 93, 90



163, 57, 0



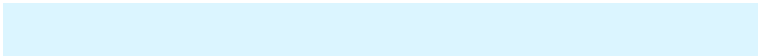
36, 12, 0

Inverse Universe

The Inverse Universe completely reimagines the original color for something new.



174, 184, 197



219, 234, 255



174, 179, 197



90, 94, 99



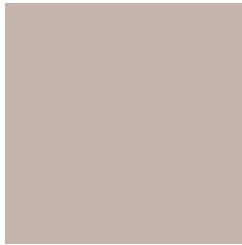
0, 69, 163



0, 15, 36

Previews

White Background



This preview shows how the RYB color 197, 182, 174 looks on a white background.

Color Contrast Check

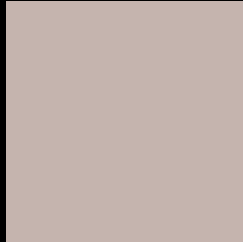
Large Text (above 18pt) WCAG AA × Fail

Any Text WCAG AA × Fail

Large Text (above 18pt) WCAG AAA × Fail

Any Text WCAG AAA × Fail

Black Background



This preview shows how the RYB color 197, 182, 174 looks on a black background.

Color Contrast Check

Large Text (above 18pt) WCAG AA ✓ Pass

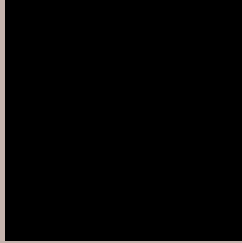
Any Text WCAG AA ✓ Pass

Large Text (above 18pt) WCAG AAA ✓ Pass

Any Text WCAG AAA ✓ Pass

If you want to check with other color combinations, try the [Color Contrast Checker](#).

R Y B 197, 182, 174 Background



This preview shows how black text looks on a background with the RYB color 197, 182, 174.



This preview shows how white text looks on a background with the RYB color 197, 182, 174.

Color Blindness Simulation

Color vision deficiency is a very complex topic, and I could not describe the different causes any better than Wikipedia does, so if you want to learn more, you should check out their [article about color blindness](#).

Dichromacy



Original Color
197, 182, 174

Protanopia
186, 189, 175

Deuteranopia
204, 177, 175



Tritanopia
199, 177, 191

Trichromacy



Original Color

197, 182, 174

Protanomaly

192, 187, 175

Deuteranomaly

201, 178, 175

Tritanomaly

198, 178, 185

Monochromacy



Original Color

197, 182, 174

Achromatopsia

184, 184, 184

Achromatomaly

189, 185, 180

CSS Examples

Text

The CSS property to change the color of the text to RYB 197, 182, 174 is called "color". The color property can be set on classes, ids or directly on the HTML element.

This example shows how text in the color rgb(197, 180, 174) looks like.

```
.text, #text, p{  
    color:rgb(197, 180, 174)  
}
```

If you want to add a text shadow in that color use the text-shadow property, you can generate a text shadow directly with our [CSS Text Shadow Generator](#).

Here you see how black text with a 4 pixel rgb(197, 180, 174) colored shadow looks like.

```
.shadow{ text-shadow: 4px 4px 2px rgb(197, 180, 174) }
```

Border

The CSS property to change the border of an element to RYB 197, 182, 174 is called "border". The border property can be set on classes, ids or directly on the HTML element.

This example shows the color as border, it can be applied via the CSS property "border" or "border-color".

```
.border, #border, table{ border:4px solid rgb(197, 180, 174) }
```

If only the border color should be changed use the property `border-color`.

```
.border{ border-color:rgb(197, 180, 174) }
```

If you want to add a box shadow in that color use:

Here you see how a box with a 4 pixel `rgb(197, 180, 174)` colored shadow looks like.

```
.boxshadow{ -moz-box-shadow:4px 4px 4px  
4px rgb(197, 180, 174); -webkit-box-  
shadow:4px 4px 4px 4px rgb(197, 180, 174);  
box-shadow:4px 4px 4px 4px rgb(197, 180,  
174) }
```

Background

The CSS property to change the background color of an element to RYB 197, 182, 174 is called "background". The background property can be set on classes, ids or directly on the HTML element.

```
.background, #background, body{  
background: rgb(197, 180, 174) }
```

If only the background color should be changed can be used:

```
.background{ background-color: rgb(197,  
180, 174) }
```

This example shows the color as background, it is applied via the CSS property "background".

To optimize and compress your CSS code, you can use our [online CSS compressor and optimizer](#) based on csstidy. If you want to create a linear or radial gradient as background or border, check our [CSS Gradient Generator](#).

Hey! You found this booklet interesting? Support Converting Colors with the new Membership Option!

The pro membership hides all ads, plus gives you double the colors in the color bucket, and more awesome pro features!

[Learn more, Memberships starting at \\$2.50/m!](#)

**Follow me
on Twitter!**

@ConvertingColor