

Converting Colors

`RYB(198, 163, 162)`

Have a look what the booklet for
RYB(198, 163, 162) contains.

RYB(198, 163, 162)	3
<i>Conversions</i>	4
<i>Details</i>	6
<i>Harmonies</i>	11
<i>Previews</i>	23
<i>Color Blindness Simulation</i>	26
<i>CSS Examples</i>	29

Color

R_YB(198, 163, 162)

Conversions

Conversions Part 1

Format	Color
Hex	C6A3A2
RGB	198, 163, 162
RGB Percent	78%, 64%, 64%
CMY	0.2235, 0.3609, 0.3647
CMYK	0.00, 0.18, 0.18, 0.22
HSL	2°, 24%, 71%
HSV	2°, 18%, 78%
XYZ	42.9027, 40.7992, 39.7962
YIQ	173.3510, 21.1810, 7.1090

Conversions

Conversions Part 2

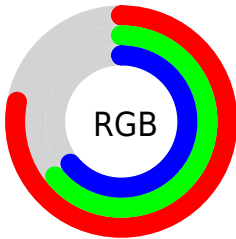
Format	Color
RYB	198, 163, 162
Decimal	13018018
CIELab	70.04, 12.71, 5.34
CIElCh	70, 13.783, 22.796
Yxy	40.7992, 0.3474, 0.3304
Android (android.graphics.Color)	4291208098 (0xFFC6A3A2)
YUV	173.3510, -5.5960, 21.6172
Hunter-Lab	63.8742, 8.1139, 7.7719

Details

The RYB color **198, 163, 162** is a light color, and the websafe version is hex **CC9999**. A complement of this color would be **162, 180, 198**, and the grayscale version is **173, 173, 173**.

A 20% lighter version of the original color is **255, 218, 217**, and **144, 111, 110** is the 20% darker color. If you saturate the color by 10%, you get **198, 144, 142**, and if you desaturate by 10%, it is **198, 182, 182**.

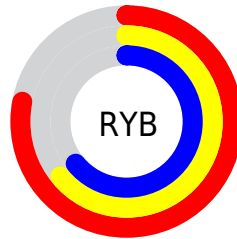
Distribution



Red (78%)

Green (64%)

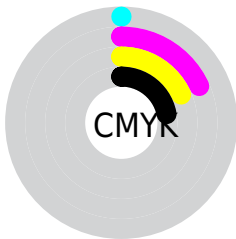
Blue (64%)



Red (78%)

Yellow (64%)

Blue (64%)

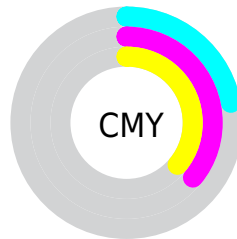


Cyan (0%)

Magenta (18%)

Yellow (18%)

Black (22%)



Cyan (22%)

Magenta (36%)

Yellow (36%)

Brightness & Saturation Gradients

These gradients show how the RYB color 198, 163, 162 changes by changing the brightness by 10 percent. The first figure shows a shift by +10% for each color and the second figure -10%.

Similar to the brightness gradients but the following saturation gradients show a change of the RYB color 198, 163, 162 by changing the saturation by 10% instead.


 198, 163, 162

 198, 163, 162

255, 255, 255

 170, 137, 136

 255, 218, 217

 144, 111, 110

 255, 246, 245

 118, 87, 86

 93, 63, 63


 68, 41, 41

 45, 20, 21

 26, 0, 1

 0, 0, 0

 198, 163, 162

 198, 163, 162

 198, 144, 142

 198, 182, 182

 198, 124, 122

 198, 200, 202

 198, 105, 103

 198, 210, 221

 198, 86, 83

 198, 219, 241

 198, 67, 63

 198, 227, 255

 198, 47, 43

 198, 28, 23

 198, 9, 4

 198, 5, 0

Harmonies

Analogous

The Analogous color harmony consists of three colors that are next to each other on the color wheel.



195, 163, 175



198, 163, 162



194, 171, 152

Triad

The Triadic color harmony groups three colors that are evenly spaced from another and form a triangle on the color wheel.



198, 163, 162



156, 177, 176



154, 167, 196

Complementary

The Complementary color scheme is a pair of colors which are on the opposite of each other on the color wheel.



198, 163, 162



162, 180, 198

Split Complementary

Split-complementary colors differ from the complementary color scheme. The scheme consists of three colors, the original color and two neighbors of the complement color.



142, 162, 191



198, 163, 162



145, 164, 178

Square

The Square scheme is like the rectangle color scheme, but the four colors are evenly spaced on the color wheel.



198, 163, 162



148, 173, 150



139, 159, 180



170, 169, 194

Rectangle

The Rectangle color scheme consists of four colors that form a rectangle on the color wheel.



198, 163, 162



188, 188, 148



139, 159, 180



149, 165, 195

Sweetspot

The Sweet Spot groups the original color and five complimentary colors.



198, 163, 162



255, 243, 242



198, 162, 197



128, 120, 120



0, 0, 0



128, 128, 128

Same Dimension

The Same Dimension uses a secret algorithm to generate beautiful new colors.



198, 163, 162



255, 200, 199



194, 198, 162



99, 90, 90



163, 4, 0



36, 1, 0

Inverse Universe

The Inverse Universe completely reimagines the original color for something new.



162, 180, 198



199, 226, 255



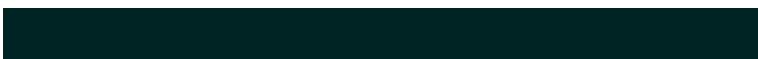
162, 174, 198



90, 95, 99



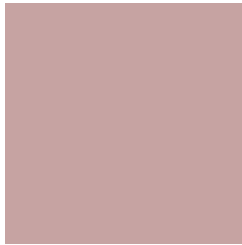
0, 80, 163



0, 18, 36

Previews

White Background



This preview shows how the RYB color 198, 163, 162 looks on a white background.

Color Contrast Check

Large Text (above 18pt) WCAG AA × Fail

Any Text WCAG AA × Fail

Large Text (above 18pt) WCAG AAA × Fail

Any Text WCAG AAA × Fail

Black Background



This preview shows how the RYB color 198, 163, 162 looks on a black background.

Color Contrast Check

Large Text (above 18pt) WCAG AA ✓ Pass

Any Text WCAG AA ✓ Pass

Large Text (above 18pt) WCAG AAA ✓ Pass

Any Text WCAG AAA ✓ Pass

If you want to check with other color combinations, try the [Color Contrast Checker](#).

RYB 198, 163, 162 Background



This preview shows how black text looks on a background with the RYB color 198, 163, 162.



This preview shows how white text looks on a background with the RYB color 198, 163, 162.

Color Blindness Simulation

Color vision deficiency is a very complex topic, and I could not describe the different causes any better than Wikipedia does, so if you want to learn more, you should check out their [article about color blindness](#).

Dichromacy



Original Color


198, 163, 162

Protanopia

176, 176, 166

Deuteranopia

192, 165, 162



Tritanopia
199, 161, 174

Trichromacy



Original Color
198, 163, 162

Protanomaly
184, 169, 165

Deuteranomaly
194, 164, 162

Tritanomaly
199, 162, 170

Monochromacy



Original Color
198, 163, 162

Achromatopsia
173, 173, 173

Achromatomaly
182, 169, 169

CSS Examples

Text

The CSS property to change the color of the text to RYB 198, 163, 162 is called "color". The color property can be set on classes, ids or directly on the HTML element.

This example shows how text in the color rgb(198, 163, 162) looks like.

```
.text, #text, p{  
    color:rgb(198, 163, 162)  
}
```

If you want to add a text shadow in that color use the text-shadow property, you can generate a text shadow directly with our [CSS Text Shadow Generator](#).

Here you see how black text with a 4 pixel rgb(198, 163, 162) colored shadow looks like.

```
.shadow{ text-shadow: 4px 4px 2px rgb(198, 163, 162) }
```

Border

The CSS property to change the border of an element to RYB 198, 163, 162 is called "border". The border property can be set on classes, ids or directly on the HTML element.

This example shows the color as border, it can be applied via the CSS property "border" or "border-color".

```
.border, #border, table{ border:4px solid rgb(198, 163, 162) }
```

If only the border color should be changed use the property `border-color`.

```
.border{ border-color:rgb(198, 163, 162) }
```

If you want to add a box shadow in that color use:

Here you see how a box with a 4 pixel `rgb(198, 163, 162)` colored shadow looks like.

```
.boxshadow{ -moz-box-shadow:4px 4px 4px  
4px rgb(198, 163, 162); -webkit-box-  
shadow:4px 4px 4px 4px rgb(198, 163, 162);  
box-shadow:4px 4px 4px 4px rgb(198, 163,  
162) }
```

Background

The CSS property to change the background color of an element to RYB 198, 163, 162 is called "background". The background property can be set on classes, ids or directly on the HTML element.

```
.background, #background, body{  
background: rgb(198, 163, 162) }
```

If only the background color should be changed can be used:

```
.background{ background-color: rgb(198,  
163, 162) }
```

This example shows the color as background, it is applied via the CSS property "background".

To optimize and compress your CSS code, you can use our [online CSS compressor and optimizer](#) based on csstidy. If you want to create a linear or radial gradient as background or border, check our [CSS Gradient Generator](#).

Hey! You found this booklet interesting? Support Converting Colors with the new Membership Option!

The pro membership hides all ads, plus gives you double the colors in the color bucket, and more awesome pro features!

[Learn more, Memberships starting at \\$2.50/m!](#)

**Follow me
on Twitter!**

@ConvertingColor