

Converting Colors

`RYB(198, 202, 170)`

Have a look what the booklet for
RYB(198, 202, 170) contains.

RYB(198, 202, 170)	3
<i>Conversions</i>	4
<i>Details</i>	6
<i>Harmonies</i>	11
<i>Previews</i>	23
<i>Color Blindness Simulation</i>	26
<i>CSS Examples</i>	29

Color

R_YB(198, 202, 170)

Conversions

Conversions Part 1

Format	Color
Hex	CABBA4
RGB	202, 187, 170
RGB Percent	79%, 73%, 67%
CMY	0.2078, 0.2664, 0.3333
CMYK	0.00, 0.07, 0.16, 0.21
HSL	32°, 23%, 73%
HSV	32°, 16%, 79%
XYZ	49.3973, 51.0278, 45.2760
YIQ	189.5470, 14.3970, -2.1070

Conversions

Conversions Part 2

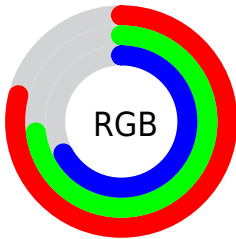
Format	Color
RYB	198, 202, 170
Decimal	13286314
CIELab	76.70, 2.45, 10.54
CIELCh	77, 10.822, 76.926
Yxy	51.0278, 0.3390, 0.3502
Android (android.graphics.Color)	4291476394 (0xFFCABBAA)
YUV	189.5470, -9.6367, 10.9213
Hunter-Lab	71.4337, -1.5741, 12.4245

Details

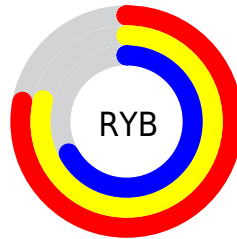
The RYB color **198, 202, 170** is a light color, and the websafe version is hex **CCCCCC**. A complement of this color would be **170, 180, 202**, and the grayscale version is **190, 190, 190**.

A 20% lighter version of the original color is **245, 255, 225**, and **144, 148, 118** is the 20% darker color. If you saturate the color by 10%, you get **195, 202, 150**, and if you desaturate by 10%, it is **202, 202, 190**.

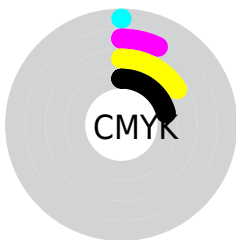
Distribution



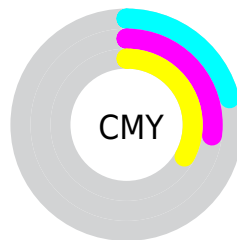
- Red (79%)
- Green (73%)
- Blue (67%)



- Red (78%)
- Yellow (79%)
- Blue (67%)



- Cyan (0%)
- Magenta (7%)
- Yellow (16%)
- Black (21%)



- Cyan (21%)
- Magenta (27%)
- Yellow (33%)

Brightness & Saturation Gradients

These gradients show how the RYB color 198, 202, 170 changes by changing the brightness by 10 percent. The first figure shows a shift by +10% for each color and the second figure -10%.

Similar to the brightness gradients but the following saturation gradients show a change of the RYB color 198, 202, 170 by changing the saturation by 10% instead.

 198, 202, 170


255, 255, 255

 245, 255, 225

254, 255, 254

 198, 202, 170

 170, 174, 144

 144, 148, 118

 117, 122, 93

 95, 97, 70

 69, 73, 47

 43, 50, 26

 17, 30, 0

 0, 0, 0

 198, 202, 170

 198, 202, 170

 195, 202, 150

 202, 202, 190

 194, 202, 130

 202, 205, 210

 189, 202, 109


 202, 211, 231

 189, 202, 89


 202, 218, 251

 185, 202, 69

 202, 222, 255

 181, 202, 49

 202, 225, 255

 181, 202, 29

 202, 228, 255

 176, 202, 8

 202, 229, 255

 176, 202, 0

Harmonies

Analogous

The Analogous color harmony consists of three colors that are next to each other on the color wheel.



209, 187, 175



198, 202, 170



171, 191, 170

Triad

The Triadic color harmony groups three colors that are evenly spaced from another and form a triangle on the color wheel.



198, 202, 170



165, 180, 195



198, 185, 203

Complementary

The Complementary color scheme is a pair of colors which are on the opposite of each other on the color wheel.



198, 202, 170



170, 180, 202

Split Complementary

Split-complementary colors differ from the complementary color scheme. The scheme consists of three colors, the original color and two neighbors of the complement color.



186, 188, 208



198, 202, 170



166, 182, 203

Square

The Square scheme is like the rectangle color scheme, but the four colors are evenly spaced on the color wheel.



198, 202, 170



170, 186, 195



174, 185, 208



207, 183, 194

Rectangle

The Rectangle color scheme consists of four colors that form a rectangle on the color wheel.



198, 202, 170



173, 192, 181



174, 185, 208



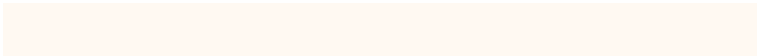
194, 186, 205

Sweetspot

The Sweet Spot groups the original color and five complimentary colors.



198, 202, 170



253, 255, 242



202, 170, 185



128, 128, 120



0, 0, 0



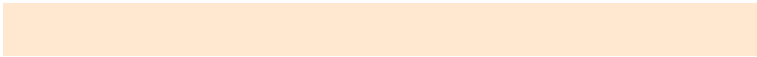
128, 128, 128

Same Dimension

The Same Dimension uses a secret algorithm to generate beautiful new colors.



198, 202, 170



251, 255, 207



170, 202, 171



102, 102, 92



147, 166, 0



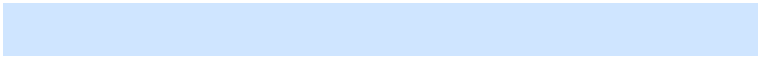
34, 38, 0

Inverse Universe

The Inverse Universe completely reimagines the original color for something new.



170, 180, 202



207, 222, 255



171, 170, 202



92, 95, 102



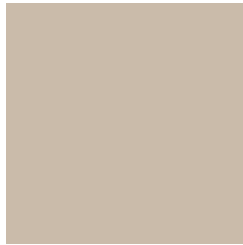
0, 53, 166



0, 12, 38

Previews

White Background



This preview shows how the RYB color 198, 202, 170 looks on a white background.

Color Contrast Check

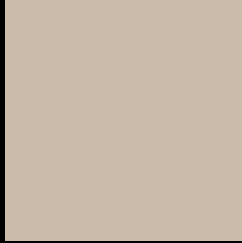
Large Text (above 18pt) WCAG AA × Fail

Any Text WCAG AA × Fail

Large Text (above 18pt) WCAG AAA × Fail

Any Text WCAG AAA × Fail

Black Background



This preview shows how the RYB color 198, 202, 170 looks on a black background.

Color Contrast Check

Large Text (above 18pt) WCAG AA ✓ Pass

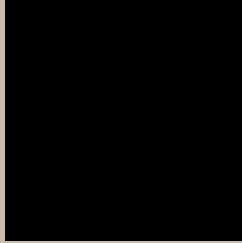
Any Text WCAG AA ✓ Pass

Large Text (above 18pt) WCAG AAA ✓ Pass

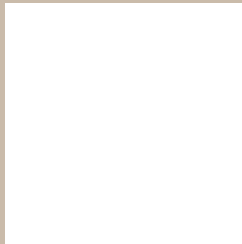
Any Text WCAG AAA ✓ Pass

If you want to check with other color combinations, try the [Color Contrast Checker](#).

R Y B 198, 202, 170 Background



This preview shows how black text looks on a background with the RYB color 198, 202, 170.



This preview shows how white text looks on a background with the RYB color 198, 202, 170.

Color Blindness Simulation

Color vision deficiency is a very complex topic, and I could not describe the different causes any better than Wikipedia does, so if you want to learn more, you should check out their [article about color blindness](#).


Dichromacy



Original Color
198, 202, 170

Protanopia
183, 197, 171

Deuteranopia
214, 188, 171



Tritanopia
206, 183, 197

Trichromacy



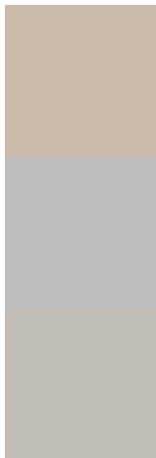
Original Color
198, 202, 170

Protanomaly
189, 199, 171

Deuteranomaly
210, 191, 171

Tritanomaly
205, 184, 187

Monochromacy



Original Color
198, 202, 170

Achromatopsia
190, 190, 190

Achromatomaly
192, 194, 183

CSS Examples

Text

The CSS property to change the color of the text to RYB 198, 202, 170 is called "color". The color property can be set on classes, ids or directly on the HTML element.

This example shows how text in the color rgb(202, 187, 170) looks like.

```
.text, #text, p{  
    color:rgb(202, 187, 170)  
}
```

If you want to add a text shadow in that color use the text-shadow property, you can generate a text shadow directly with our [CSS Text Shadow Generator](#).

Here you see how black text with a 4 pixel rgb(202, 187, 170) colored shadow looks like.

```
.shadow{ text-shadow: 4px 4px 2px rgb(202, 187, 170) }
```

Border

The CSS property to change the border of an element to RYB 198, 202, 170 is called "border". The border property can be set on classes, ids or directly on the HTML element.

This example shows the color as border, it can be applied via the CSS property "border" or "border-color".

```
.border, #border, table{ border:4px solid rgb(202, 187, 170) }
```

If only the border color should be changed use the property `border-color`.

```
.border{ border-color:rgb(202, 187, 170) }
```

If you want to add a box shadow in that color use:

Here you see how a box with a 4 pixel `rgb(202, 187, 170)` colored shadow looks like.

```
.boxshadow{ -moz-box-shadow:4px 4px 4px  
4px rgb(202, 187, 170); -webkit-box-  
shadow:4px 4px 4px 4px rgb(202, 187, 170);  
box-shadow:4px 4px 4px 4px rgb(202, 187,  
170) }
```

Background

The CSS property to change the background color of an element to RYB 198, 202, 170 is called "background". The background property can be set on classes, ids or directly on the HTML element.

```
.background, #background, body{  
background: rgb(202, 187, 170) }
```

If only the background color should be changed can be used:

```
.background{ background-color: rgb(202,  
187, 170) }
```

This example shows the color as background, it is applied via the CSS property "background".

To optimize and compress your CSS code, you can use our [online CSS compressor and optimizer](#) based on csstidy. If you want to create a linear or radial gradient as background or border, check our [CSS Gradient Generator](#).

Hey! You found this booklet interesting? Support Converting Colors with the new Membership Option!

The pro membership hides all ads, plus gives you double the colors in the color bucket, and more awesome pro features!

[Learn more, Memberships starting at \\$2.50/m!](#)

**Follow me
on Twitter!**

@ConvertingColor