

Converting Colors

`RYB(199, 141, 134)`

Have a look what the booklet for
RYB(199, 141, 134) contains.

RYB(199, 141, 134)	3
<i>Conversions</i>	4
<i>Details</i>	6
<i>Harmonies</i>	11
<i>Previews</i>	23
<i>Color Blindness Simulation</i>	26
<i>CSS Examples</i>	29

Color

R_YB(199, 141, 134)

Conversions

Conversions Part 1

Format	Color
Hex	C78C86
RGB	199, 140, 134
RGB Percent	78%, 55%, 53%
CMY	0.2196, 0.4497, 0.4745
CMYK	0.00, 0.29, 0.33, 0.22
HSL	6°, 37%, 65%
HSV	6°, 33%, 78%
XYZ	37.2811, 32.7130, 26.9036
YIQ	156.9570, 37.0900, 10.6420

Conversions

Conversions Part 2

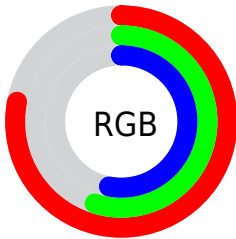
Format	Color
R _{YB}	199, 141, 134
Decimal	13077638
CIE Lab	63.93, 21.49, 12.31
CIE LCh	64, 24.762, 29.799
Yxy	32.7130, 0.3847, 0.3376
Android (android.graphics.Color)	4291267718 (0xFFC78C86)
YUV	156.9570, -11.3178, 36.8717
Hunter-Lab	57.1953, 16.2583, 12.1478

Details

The RYB color **199, 141, 134** is a light color, and the websafe version is hex **CC9999**. A complement of this color would be **134, 165, 199**, and the grayscale version is **157, 157, 157**.

A 20% lighter version of the original color is **255, 195, 187**, and **143, 89, 84** is the 20% darker color. If you saturate the color by 10%, you get **199, 123, 114**, and if you desaturate by 10%, it is **199, 158, 154**.

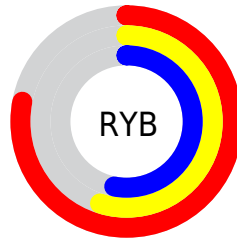
Distribution



Red (78%)

Green (55%)

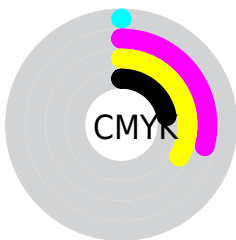
Blue (53%)



Red (78%)

Yellow (55%)

Blue (53%)

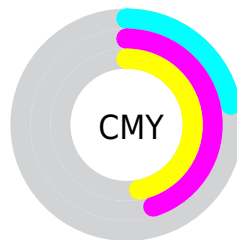


Cyan (0%)

Magenta (29%)

Yellow (33%)

Black (22%)



Cyan (22%)

Magenta (45%)

Yellow (47%)

Brightness & Saturation Gradients

These gradients show how the RYB color 199, 141, 134 changes by changing the brightness by 10 percent. The first figure shows a shift by +10% for each color and the second figure -10%.

Similar to the brightness gradients but the following saturation gradients show a change of the RYB color 199, 141, 134 by changing the saturation by 10% instead.

 199, 141, 134

255, 255, 255

 255, 195, 187

 255, 223, 215


 249, 255, 243


 199, 141, 134

 171, 116, 109

 143, 91, 84

 117, 66, 61

 91, 43, 39

 65, 21, 19

 43, 0, 0

 0, 0, 0

 199, 141, 134

 199, 123, 114


 199, 141, 134


 199, 158, 154

 199, 105, 94

 199, 176, 174

 199, 87, 74

 199, 194, 194

 199, 69, 54

 199, 206, 214

 199, 52, 35

 199, 215, 234

 199, 35, 15

 199, 225, 253

 199, 21, 0

 199, 227, 255

Harmonies

Analogous

The Analogous color harmony consists of three colors that are next to each other on the color wheel.



197, 139, 156



199, 141, 134



189, 166, 117

Triad

The Triadic color harmony groups three colors that are evenly spaced from another and form a triangle on the color wheel.



199, 141, 134



122, 157, 165



127, 148, 199

Complementary

The Complementary color scheme is a pair of colors which are on the opposite of each other on the color wheel.



199, 141, 134



134, 165, 199

Split Complementary

Split-complementary colors differ from the complementary color scheme. The scheme consists of three colors, the original color and two neighbors of the complement color.



99, 137, 192



199, 141, 134



99, 137, 167

Square

The Square scheme is like the rectangle color scheme, but the four colors are evenly spaced on the color wheel.



199, 141, 134



116, 160, 129



88, 130, 176



158, 149, 193

Rectangle

The Rectangle color scheme consists of four colors that form a rectangle on the color wheel.



199, 141, 134



158, 178, 112



88, 130, 176



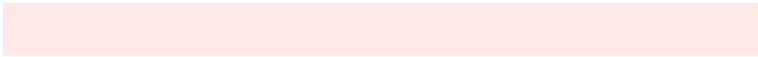
117, 145, 198

Sweetspot

The Sweet Spot groups the original color and five complimentary colors.



199, 141, 134



255, 232, 230



199, 134, 194



128, 114, 112



0, 0, 0



128, 128, 128

Same Dimension

The Same Dimension uses a secret algorithm to generate beautiful new colors.



199, 141, 134



255, 166, 156



180, 199, 134



99, 90, 90



163, 18, 0



36, 3, 0

Inverse Universe

The Inverse Universe completely reimagines the original color for something new.



134, 165, 199



156, 203, 255



134, 153, 199



90, 94, 99



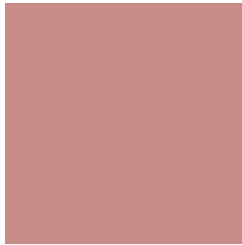
0, 77, 163



0, 17, 36

Previews

White Background



This preview shows how the RYB color 199, 141, 134 looks on a white background.

Color Contrast Check

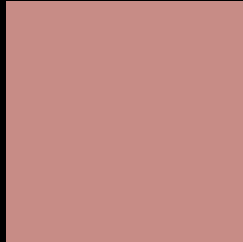
Large Text (above 18pt) WCAG AA × Fail

Any Text WCAG AA × Fail

Large Text (above 18pt) WCAG AAA × Fail

Any Text WCAG AAA × Fail

Black Background



This preview shows how the RYB color 199, 141, 134 looks on a black background.

Color Contrast Check

Large Text (above 18pt) WCAG AA ✓ Pass

Any Text WCAG AA ✓ Pass

Large Text (above 18pt) WCAG AAA ✓ Pass

Any Text WCAG AAA ✓ Pass

If you want to check with other color combinations, try the [Color Contrast Checker](#).

R Y B 199, 141, 134 Background



This preview shows how black text looks on a background with the R Y B color 199, 141, 134.



This preview shows how white text looks on a background with the R Y B color 199, 141, 134.

Color Blindness Simulation

Color vision deficiency is a very complex topic, and I could not describe the different causes any better than Wikipedia does, so if you want to learn more, you should check out their [article about color blindness](#).


Dichromacy



Original Color
199, 141, 134

Protanopia
150, 161, 141

Deuteranopia
178, 159, 132



Tritanopia
200, 138, 149

Trichromacy



Original Color

199, 141, 134

Protanomaly

175, 156, 138

Deuteranomaly

186, 150, 133

Tritanomaly

200, 139, 144

Monochromacy



Original Color

199, 141, 134

Achromatopsia

157, 157, 157

Achromatomaly

172, 151, 149

CSS Examples

Text

The CSS property to change the color of the text to RYB 199, 141, 134 is called "color". The color property can be set on classes, ids or directly on the HTML element.

This example shows how text in the color `rgb(199, 140, 134)` looks like.

```
.text, #text, p{  
    color:rgb(199, 140, 134)  
}
```

If you want to add a text shadow in that color use the text-shadow property, you can generate a text shadow directly with our [CSS Text Shadow Generator](#).

Here you see how black text with a 4 pixel rgb(199, 140, 134) colored shadow looks like.

```
.shadow{ text-shadow: 4px 4px 2px rgb(199, 140, 134) }
```

Border

The CSS property to change the border of an element to RYB 199, 141, 134 is called "border". The border property can be set on classes, ids or directly on the HTML element.

This example shows the color as border, it can be applied via the CSS property "border" or "border-color".

```
.border, #border, table{ border:4px solid rgb(199, 140, 134) }
```

If only the border color should be changed use the property `border-color`.

```
.border{ border-color:rgb(199, 140, 134) }
```

If you want to add a box shadow in that color use:

Here you see how a box with a 4 pixel `rgb(199, 140, 134)` colored shadow looks like.

```
.boxshadow{ -moz-box-shadow:4px 4px 4px  
4px rgb(199, 140, 134); -webkit-box-  
shadow:4px 4px 4px 4px rgb(199, 140, 134);  
box-shadow:4px 4px 4px 4px rgb(199, 140,  
134) }
```

Background

The CSS property to change the background color of an element to RYB 199, 141, 134 is called "background". The background property can be set on classes, ids or directly on the HTML element.

```
.background, #background, body{  
background: rgb(199, 140, 134) }
```

If only the background color should be changed can be used:

```
.background{ background-color: rgb(199,  
140, 134) }
```

This example shows the color as background, it is applied via the CSS property "background".

To optimize and compress your CSS code, you can use our [online CSS compressor and optimizer](#) based on csstidy. If you want to create a linear or radial gradient as background or border, check our [CSS Gradient Generator](#).

Hey! You found this booklet interesting? Support Converting Colors with the new Membership Option!

The pro membership hides all ads, plus gives you double the colors in the color bucket, and more awesome pro features!

[Learn more, Memberships starting at \\$2.50/m!](#)

**Follow me
on Twitter!**

@ConvertingColor