

Converting Colors

`RYB(199, 142, 120)`

Have a look what the booklet for
RYB(199, 142, 120) contains.

RYB(199, 142, 120)	3
<i>Conversions</i>	4
<i>Details</i>	6
<i>Harmonies</i>	11
<i>Previews</i>	23
<i>Color Blindness Simulation</i>	26
<i>CSS Examples</i>	29

Color

R_YB(199, 142, 120)

Conversions

Conversions Part 1

Format	Color
Hex	C78978
RGB	199, 137, 120
RGB Percent	78%, 54%, 47%
CMY	0.2196, 0.4619, 0.5294
CMYK	0.00, 0.31, 0.40, 0.22
HSL	13°, 41%, 63%
HSV	13°, 40%, 78%
XYZ	35.9186, 31.4487, 21.9464
YIQ	153.6000, 42.4090, 7.8570

Conversions

Conversions Part 2

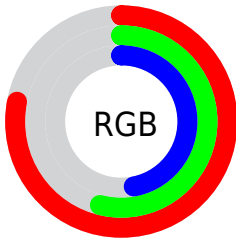
Format	Color
R _Y B	199, 142, 120
Decimal	13076856
CIE Lab	62.88, 21.47, 18.74
CIE LCh	63, 28.502, 41.121
Yxy	31.4487, 0.4022, 0.3521
Android (android.graphics.Color)	4291266936 (0xFFC78978)
YUV	153.6000, -16.5648, 39.8158
Hunter-Lab	56.0791, 16.1906, 16.0524

Details

The RYB color **199, 142, 120** is a light color, and the websafe version is hex **CC9999**. A complement of this color would be **120, 155, 199**, and the grayscale version is **154, 154, 154**.

A 20% lighter version of the original color is **255, 197, 172**, and **143, 92, 71** is the 20% darker color. If you saturate the color by 10%, you get **199, 128, 100**, and if you desaturate by 10%, it is **199, 157, 140**.

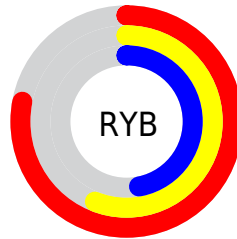
Distribution



Red (78%)

Green (54%)

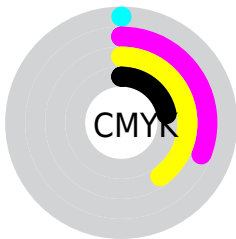
Blue (47%)



Red (78%)

Yellow (56%)

Blue (47%)

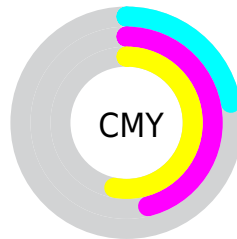


Cyan (0%)

Magenta (31%)

Yellow (40%)

Black (22%)



Cyan (22%)

Magenta (46%)

Yellow (53%)

Brightness & Saturation Gradients

These gradients show how the RYB color 199, 142, 120 changes by changing the brightness by 10 percent. The first figure shows a shift by +10% for each color and the second figure -10%.

Similar to the brightness gradients but the following saturation gradients show a change of the RYB color 199, 142, 120 by changing the saturation by 10% instead.

 199, 142, 120


255, 255, 255

 255, 197, 172

 255, 229, 200

 237, 255, 228

 199, 142, 120

 171, 117, 95

 143, 92, 71

 116, 67, 49

 89, 43, 28

 64, 24, 2


 41, 0, 0

 0, 0, 0

 199, 142, 120

 199, 128, 100

 199, 142, 120

 199, 157, 140

199, 113, 80

199, 170, 160

199, 100, 60

199, 185, 180

199, 85, 40

199, 199, 200

199, 69, 21

199, 208, 220

199, 56, 1

199, 217, 239

199, 55, 0

199, 225, 255

199, 227, 255

Harmonies

Analogous

The Analogous color harmony consists of three colors that are next to each other on the color wheel.



202, 133, 143



199, 142, 120



182, 184, 105

Triad

The Triadic color harmony groups three colors that are evenly spaced from another and form a triangle on the color wheel.



199, 142, 120



102, 143, 165



133, 147, 202

Complementary

The Complementary color scheme is a pair of colors which are on the opposite of each other on the color wheel.



199, 142, 120



120, 155, 199

Split Complementary

Split-complementary colors differ from the complementary color scheme. The scheme consists of three colors, the original color and two neighbors of the complement color.



95, 135, 199



199, 142, 120



76, 122, 166

Square

The Square scheme is like the rectangle color scheme, but the four colors are evenly spaced on the color wheel.



199, 142, 120



113, 161, 142



70, 122, 185



168, 142, 190

Rectangle

The Rectangle color scheme consists of four colors that form a rectangle on the color wheel.



199, 142, 120



125, 169, 101



70, 122, 185



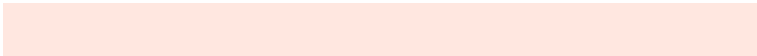
120, 144, 202

Sweetspot

The Sweet Spot groups the original color and five complimentary colors.



199, 142, 120



255, 233, 224



199, 120, 182



128, 115, 110



0, 0, 0



128, 128, 128

Same Dimension

The Same Dimension uses a secret algorithm to generate beautiful new colors.



199, 142, 120



255, 166, 133



150, 199, 120



99, 93, 90



163, 46, 0



36, 10, 0

Inverse Universe

The Inverse Universe completely reimagines the original color for something new.



120, 155, 199



133, 186, 255



120, 137, 199



90, 94, 99



0, 72, 163



0, 16, 36

Previews

White Background



This preview shows how the RYB color 199, 142, 120 looks on a white background.

Color Contrast Check

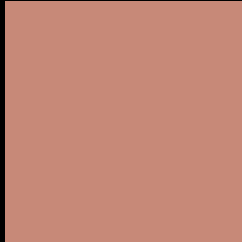
Large Text (above 18pt) WCAG AA × Fail

Any Text WCAG AA × Fail

Large Text (above 18pt) WCAG AAA × Fail

Any Text WCAG AAA × Fail

Black Background



This preview shows how the RYB color 199, 142, 120 looks on a black background.

Color Contrast Check

Large Text (above 18pt) WCAG AA ✓ Pass

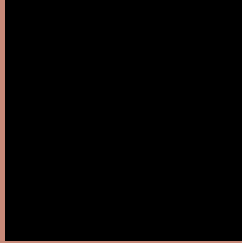
Any Text WCAG AA ✓ Pass

Large Text (above 18pt) WCAG AAA ✓ Pass

Any Text WCAG AAA ✓ Pass

If you want to check with other color combinations, try the [Color Contrast Checker](#).

R Y B 199, 142, 120 Background



This preview shows how black text looks on a background with the R Y B color 199, 142, 120.



This preview shows how white text looks on a background with the R Y B color 199, 142, 120.

Color Blindness Simulation

Color vision deficiency is a very complex topic, and I could not describe the different causes any better than Wikipedia does, so if you want to learn more, you should check out their [article about color blindness](#).

Dichromacy



Original Color
199, 142, 120

Protanopia
139, 161, 127

Deuteranopia
179, 170, 118



Tritanopia
201, 134, 144

Trichromacy



Original Color

199, 142, 120

Protanomaly

175, 166, 124

Deuteranomaly

186, 156, 119

Tritanomaly

200, 135, 135

Monochromacy



Original Color

199, 142, 120

Achromatopsia

154, 154, 154

Achromatomaly

170, 150, 142

CSS Examples

Text

The CSS property to change the color of the text to RYB 199, 142, 120 is called "color". The color property can be set on classes, ids or directly on the HTML element.

This example shows how text in the color `rgb(199, 137, 120)` looks like.

```
.text, #text, p{  
    color:rgb(199, 137, 120)  
}
```

If you want to add a text shadow in that color use the text-shadow property, you can generate a text shadow directly with our [CSS Text Shadow Generator](#).

Here you see how black text with a 4 pixel rgb(199, 137, 120) colored shadow looks like.

```
.shadow{ text-shadow: 4px 4px 2px rgb(199, 137, 120) }
```

Border

The CSS property to change the border of an element to RYB 199, 142, 120 is called "border". The border property can be set on classes, ids or directly on the HTML element.

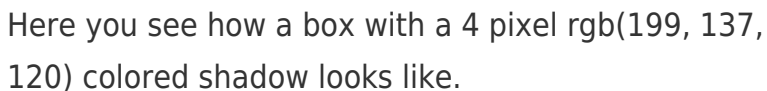
This example shows the color as border, it can be applied via the CSS property "border" or "border-color".

```
.border, #border, table{ border:4px solid rgb(199, 137, 120) }
```

If only the border color should be changed use the property `border-color`.

```
.border{ border-color:rgb(199, 137, 120) }
```

If you want to add a box shadow in that color use:



Here you see how a box with a 4 pixel `rgb(199, 137, 120)` colored shadow looks like.

```
.boxshadow{ -moz-box-shadow:4px 4px 4px 4px rgb(199, 137, 120); -webkit-box-shadow:4px 4px 4px 4px rgb(199, 137, 120); box-shadow:4px 4px 4px 4px rgb(199, 137, 120) }
```

Background

The CSS property to change the background color of an element to RYB 199, 142, 120 is called "background". The background property can be set on classes, ids or directly on the HTML element.

```
.background, #background, body{  
background: rgb(199, 137, 120) }
```

If only the background color should be changed can be used:

```
.background{ background-color: rgb(199,  
137, 120) }
```

This example shows the color as background, it is applied via the CSS property "background".

To optimize and compress your CSS code, you can use our [online CSS compressor and optimizer](#) based on csstidy. If you want to create a linear or radial gradient as background or border, check our [CSS Gradient Generator](#).

Hey! You found this booklet interesting? Support Converting Colors with the new Membership Option!

The pro membership hides all ads, plus gives you double the colors in the color bucket, and more awesome pro features!

[Learn more, Memberships starting at \\$2.50/m!](#)

**Follow me
on Twitter!**

@ConvertingColor