

Converting Colors

`RYB(199, 157, 139)`

Have a look what the booklet for
RYB(199, 157, 139) contains.

RYB(199, 157, 139)	3
<i>Conversions</i>	4
<i>Details</i>	6
<i>Harmonies</i>	11
<i>Previews</i>	23
<i>Color Blindness Simulation</i>	26
<i>CSS Examples</i>	29

Color

R_YB(199, 157, 139)

Conversions

Conversions Part 1

Format	Color
Hex	C7998B
RGB	199, 153, 139
RGB Percent	78%, 60%, 55%
CMY	0.2196, 0.4006, 0.4549
CMYK	0.00, 0.23, 0.30, 0.22
HSL	14°, 35%, 66%
HSV	14°, 30%, 78%
XYZ	39.5795, 36.7383, 29.4312
YIQ	165.1580, 31.9100, 5.3980

Conversions

Conversions Part 2

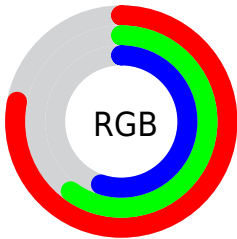
Format	Color
RYB	199, 157, 139
Decimal	13080971
CIELab	67.08, 15.27, 13.93
CIElCh	67, 20.669, 42.364
Yxy	36.7383, 0.3743, 0.3474
Android (android.graphics.Color)	4291271051 (0xFFC7998B)
YUV	165.1580, -12.8959, 29.6794
Hunter-Lab	60.6122, 10.4884, 13.6393

Details

The RYB color **199, 157, 139** is a light color, and the websafe version is hex **CC9999**. A complement of this color would be **139, 165, 199**, and the grayscale version is **165, 165, 165**.

A 20% lighter version of the original color is **255, 212, 192**, and **144, 106, 89** is the 20% darker color. If you saturate the color by 10%, you get **199, 144, 119**, and if you desaturate by 10%, it is **199, 171, 159**.

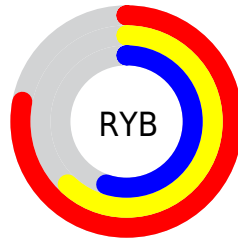
Distribution



Red (78%)

Green (60%)

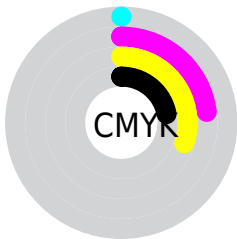
Blue (55%)



Red (78%)

Yellow (62%)

Blue (55%)

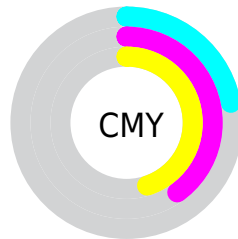


Cyan (0%)

Magenta (23%)

Yellow (30%)

Black (22%)



Cyan (22%)

Magenta (40%)

Yellow (45%)

Brightness & Saturation Gradients

These gradients show how the RYB color 199, 157, 139 changes by changing the brightness by 10 percent. The first figure shows a shift by +10% for each color and the second figure -10%.

Similar to the brightness gradients but the following saturation gradients show a change of the RYB color 199, 157, 139 by changing the saturation by 10% instead.

 199, 157, 139


255, 255, 255

 255, 212, 192

 255, 249, 220

 249, 255, 249

 199, 157, 139

 171, 131, 114

 144, 106, 89

 117, 82, 66

 92, 57, 43

 67, 36, 23

 44, 17, 0

 7, 0, 0

 0, 0, 0

 199, 157, 139

 199, 157, 139

 199, 144, 119

 199, 171, 159

 199, 129, 99

 199, 184, 179

 199, 116, 79

 199, 199, 199

 199, 102, 59

 199, 208, 219

 199, 87, 39

 199, 216, 239

 199, 73, 20

 199, 224, 255

 199, 60, 0

 199, 227, 255

Harmonies

Analogous

The Analogous color harmony consists of three colors that are next to each other on the color wheel.



202, 150, 156



199, 157, 139



185, 187, 128

Triad

The Triadic color harmony groups three colors that are evenly spaced from another and form a triangle on the color wheel.



199, 157, 139



128, 158, 173



152, 160, 199

Complementary

The Complementary color scheme is a pair of colors which are on the opposite of each other on the color wheel.



199, 157, 139



139, 165, 199

Split Complementary

Split-complementary colors differ from the complementary color scheme. The scheme consists of three colors, the original color and two neighbors of the complement color.



128, 153, 198



199, 157, 139



114, 145, 174

Square

The Square scheme is like the rectangle color scheme, but the four colors are evenly spaced on the color wheel.



199, 157, 139



135, 170, 157



113, 146, 188



176, 156, 191

Rectangle

The Rectangle color scheme consists of four colors that form a rectangle on the color wheel.



199, 157, 139



145, 176, 126



113, 146, 188



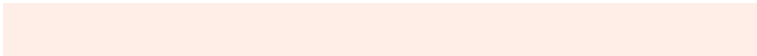
143, 158, 200

Sweetspot

The Sweet Spot groups the original color and five complimentary colors.



199, 157, 139



255, 238, 232



199, 139, 186



128, 118, 113



0, 0, 0



128, 128, 128

Same Dimension

The Same Dimension uses a secret algorithm to generate beautiful new colors.



199, 157, 139



255, 190, 163



163, 199, 139



99, 93, 90



163, 50, 0



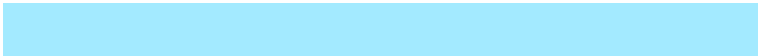
36, 10, 0

Inverse Universe

The Inverse Universe completely reimagines the original color for something new.



139, 165, 199



163, 203, 255



139, 152, 199



90, 94, 99



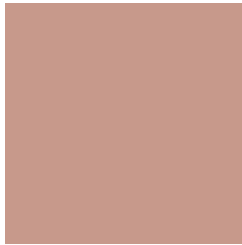
0, 71, 163



0, 15, 36

Previews

White Background



This preview shows how the RYB color 199, 157, 139 looks on a white background.

Color Contrast Check

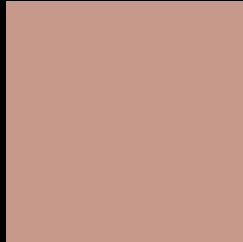
Large Text (above 18pt) WCAG AA × Fail

Any Text WCAG AA × Fail

Large Text (above 18pt) WCAG AAA × Fail

Any Text WCAG AAA × Fail

Black Background



This preview shows how the RYB color 199, 157, 139 looks on a black background.

Color Contrast Check

Large Text (above 18pt) WCAG AA ✓ Pass

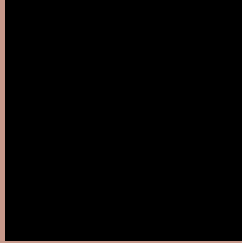
Any Text WCAG AA ✓ Pass

Large Text (above 18pt) WCAG AAA ✓ Pass

Any Text WCAG AAA ✓ Pass

If you want to check with other color combinations, try the [Color Contrast Checker](#).

RYB 199, 157, 139 Background



This preview shows how black text looks on a background with the RYB color 199, 157, 139.

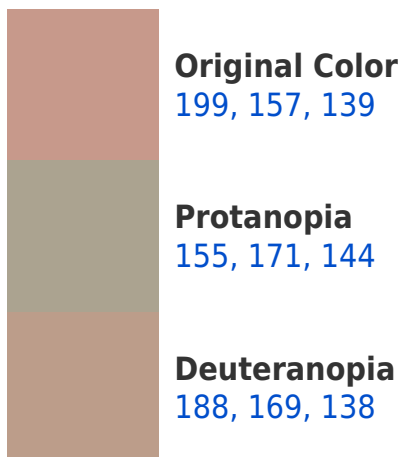


This preview shows how white text looks on a background with the RYB color 199, 157, 139.

Color Blindness Simulation

Color vision deficiency is a very complex topic, and I could not describe the different causes any better than Wikipedia does, so if you want to learn more, you should check out their [article about color blindness](#).

Dichromacy





Tritanopia
201, 150, 161

Trichromacy



Original Color
199, 157, 139

Protanomaly
181, 172, 142

Deuteranomaly
192, 163, 138

Tritanomaly
200, 151, 153

Monochromacy



Original Color
199, 157, 139

Achromatopsia
165, 165, 165

Achromatomaly
177, 163, 156

CSS Examples

Text

The CSS property to change the color of the text to RYB 199, 157, 139 is called "color". The color property can be set on classes, ids or directly on the HTML element.

This example shows how text in the color `rgb(199, 153, 139)` looks like.

```
.text, #text, p{  
    color:rgb(199, 153, 139)  
}
```

If you want to add a text shadow in that color use the text-shadow property, you can generate a text shadow directly with our [CSS Text Shadow Generator](#).

Here you see how black text with a 4 pixel rgb(199, 153, 139) colored shadow looks like.

```
.shadow{ text-shadow: 4px 4px 2px rgb(199, 153, 139) }
```

Border

The CSS property to change the border of an element to RYB 199, 157, 139 is called "border". The border property can be set on classes, ids or directly on the HTML element.

This example shows the color as border, it can be applied via the CSS property "border" or "border-color".

```
.border, #border, table{ border:4px solid rgb(199, 153, 139) }
```

If only the border color should be changed use the property `border-color`.

```
.border{ border-color:rgb(199, 153, 139) }
```

If you want to add a box shadow in that color use:

Here you see how a box with a 4 pixel `rgb(199, 153, 139)` colored shadow looks like.

```
.boxshadow{ -moz-box-shadow:4px 4px 4px  
4px rgb(199, 153, 139); -webkit-box-  
shadow:4px 4px 4px 4px rgb(199, 153, 139);  
box-shadow:4px 4px 4px 4px rgb(199, 153,  
139) }
```

Background

The CSS property to change the background color of an element to RYB 199, 157, 139 is called "background". The background property can be set on classes, ids or directly on the HTML element.

```
.background, #background, body{  
background: rgb(199, 153, 139) }
```

If only the background color should be changed can be used:

```
.background{ background-color: rgb(199,  
153, 139) }
```

This example shows the color as background, it is applied via the CSS property "background".

To optimize and compress your CSS code, you can use our [online CSS compressor and optimizer](#) based on csstidy. If you want to create a linear or radial gradient as background or border, check our [CSS Gradient Generator](#).

Hey! You found this booklet interesting? Support Converting Colors with the new Membership Option!

The pro membership hides all ads, plus gives you double the colors in the color bucket, and more awesome pro features!

[Learn more, Memberships starting at \\$2.50/m!](#)

**Follow me
on Twitter!**

@ConvertingColor