

Converting Colors

`RYB(199, 175, 158)`

Have a look what the booklet for
RYB(199, 175, 158) contains.

RYB(199, 175, 158)	3
<i>Conversions</i>	4
<i>Details</i>	6
<i>Harmonies</i>	11
<i>Previews</i>	23
<i>Color Blindness Simulation</i>	26
<i>CSS Examples</i>	29

Color

R_YB(199, 175, 158)

Conversions

Conversions Part 1

Format	Color
Hex	C7AA9E
RGB	199, 170, 158
RGB Percent	78%, 67%, 62%
CMY	0.2196, 0.3333, 0.3804
CMYK	0.00, 0.15, 0.21, 0.22
HSL	18°, 27%, 70%
HSV	18°, 21%, 78%
XYZ	44.1027, 43.3667, 38.3939
YIQ	177.3030, 21.1360, 2.4160

Conversions

Conversions Part 2

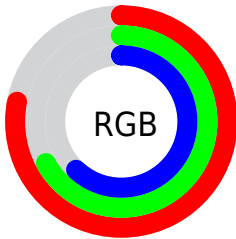
Format	Color
RYB	199, 175, 158
Decimal	13085342
CIELab	71.80, 8.63, 10.09
CIElCh	72, 13.275, 49.460
Yxy	43.3667, 0.3504, 0.3446
Android (android.graphics.Color)	4291275422 (0xFFC7AA9E)
YUV	177.3030, -9.5164, 19.0283
Hunter-Lab	65.8534, 4.3000, 11.5300

Details

The RYB color **199, 175, 158** is a light color, and the websafe version is hex **CC9999**. A complement of this color would be **158, 175, 199**, and the grayscale version is **177, 177, 177**.

A 20% lighter version of the original color is **255, 230, 213**, and **145, 122, 107** is the 20% darker color. If you saturate the color by 10%, you get **199, 164, 138**, and if you desaturate by 10%, it is **199, 186, 178**.

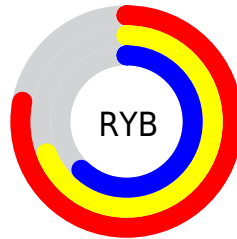
Distribution



Red (78%)

Green (67%)

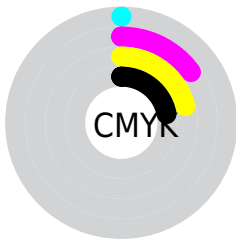
Blue (62%)



Red (78%)

Yellow (69%)

Blue (62%)

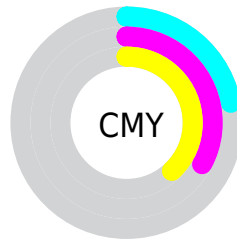


Cyan (0%)

Magenta (15%)

Yellow (21%)

Black (22%)



Cyan (22%)

Magenta (33%)

Yellow (38%)

Brightness & Saturation Gradients

These gradients show how the RYB color 199, 175, 158 changes by changing the brightness by 10 percent. The first figure shows a shift by +10% for each color and the second figure -10%.

Similar to the brightness gradients but the following saturation gradients show a change of the RYB color 199, 175, 158 by changing the saturation by 10% instead.

 199, 175, 158


255, 255, 255

 255, 230, 213

 242, 255, 241

 199, 175, 158

 171, 149, 132

 145, 122, 107

 119, 98, 82

 93, 75, 59

 69, 51, 38

 46, 30, 17

 25, 0, 0


 0, 0, 0

 199, 175, 158

 199, 175, 158

 199, 164, 138

 199, 186, 178

 199, 152, 118

 199, 198, 198

 199, 141, 98

 199, 207, 218

 199, 129, 78

 199, 215, 238

 199, 117, 59

 199, 223, 255

 199, 106, 39

 199, 227, 255

 199, 94, 19

 199, 227, 255

 199, 82, 0

Harmonies

Analogous

The Analogous color harmony consists of three colors that are next to each other on the color wheel.



202, 168, 168



199, 175, 158



180, 190, 152

Triad

The Triadic color harmony groups three colors that are evenly spaced from another and form a triangle on the color wheel.



199, 175, 158



151, 171, 183



173, 174, 199

Complementary

The Complementary color scheme is a pair of colors which are on the opposite of each other on the color wheel.



199, 175, 158



158, 175, 199

Split Complementary

Split-complementary colors differ from the complementary color scheme. The scheme consists of three colors, the original color and two neighbors of the complement color.



158, 171, 199



199, 175, 158



145, 164, 184

Square

The Square scheme is like the rectangle color scheme, but the four colors are evenly spaced on the color wheel.



199, 175, 158



160, 181, 178



148, 167, 194



188, 170, 192

Rectangle

The Rectangle color scheme consists of four colors that form a rectangle on the color wheel.



199, 175, 158



160, 182, 152



148, 167, 194



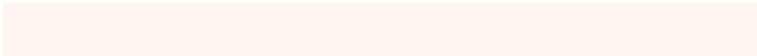
168, 174, 200

Sweetspot

The Sweet Spot groups the original color and five complimentary colors.



199, 175, 158



255, 245, 240



199, 158, 187



128, 122, 119



0, 0, 0



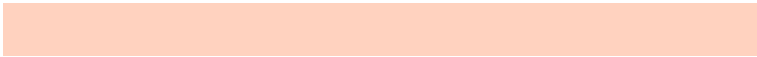
128, 128, 128

Same Dimension

The Same Dimension uses a secret algorithm to generate beautiful new colors.



199, 175, 158



255, 218, 191



170, 199, 158



99, 93, 90



163, 68, 0



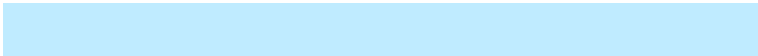
36, 14, 0

Inverse Universe

The Inverse Universe completely reimagines the original color for something new.



158, 175, 199



191, 217, 255



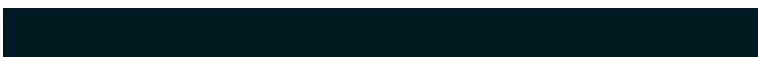
158, 165, 199



90, 94, 99



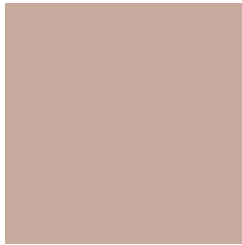
0, 67, 163



0, 15, 36

Previews

White Background



This preview shows how the RYB color 199, 175, 158 looks on a white background.

Color Contrast Check

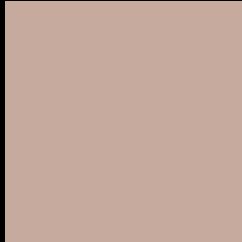
Large Text (above 18pt) WCAG AA × Fail

Any Text WCAG AA × Fail

Large Text (above 18pt) WCAG AAA × Fail

Any Text WCAG AAA × Fail

Black Background



This preview shows how the RYB color 199, 175, 158 looks on a black background.

Color Contrast Check

Large Text (above 18pt) WCAG AA ✓ Pass

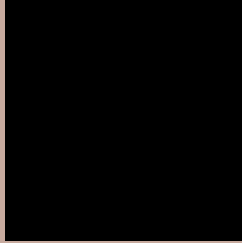
Any Text WCAG AA ✓ Pass

Large Text (above 18pt) WCAG AAA ✓ Pass

Any Text WCAG AAA ✓ Pass

If you want to check with other color combinations, try the [Color Contrast Checker](#).

R Y B 199, 175, 158 Background



This preview shows how black text looks on a background with the RYB color 199, 175, 158.



This preview shows how white text looks on a background with the RYB color 199, 175, 158.

Color Blindness Simulation

Color vision deficiency is a very complex topic, and I could not describe the different causes any better than Wikipedia does, so if you want to learn more, you should check out their [article about color blindness](#).

Dichromacy



Original Color


199, 175, 158

Protanopia

174, 183, 161

Deuteranopia

200, 175, 158



Tritanopia
202, 167, 180

Trichromacy



Original Color
199, 175, 158

Protanomaly
189, 184, 160

Deuteranomaly
200, 175, 158

Tritanomaly
201, 168, 172

Monochromacy



Original Color
199, 175, 158

Achromatopsia
177, 177, 177

Achromatomaly
185, 175, 170

CSS Examples

Text

The CSS property to change the color of the text to RYB 199, 175, 158 is called "color". The color property can be set on classes, ids or directly on the HTML element.

This example shows how text in the color rgb(199, 170, 158) looks like.

```
.text, #text, p{  
    color:rgb(199, 170, 158)  
}
```

If you want to add a text shadow in that color use the text-shadow property, you can generate a text shadow directly with our [CSS Text Shadow Generator](#).

Here you see how black text with a 4 pixel rgb(199, 170, 158) colored shadow looks like.

```
.shadow{ text-shadow: 4px 4px 2px rgb(199, 170, 158) }
```

Border

The CSS property to change the border of an element to RYB 199, 175, 158 is called "border". The border property can be set on classes, ids or directly on the HTML element.

This example shows the color as border, it can be applied via the CSS property "border" or "border-color".

```
.border, #border, table{ border:4px solid rgb(199, 170, 158) }
```

If only the border color should be changed use the property `border-color`.

```
.border{ border-color:rgb(199, 170, 158) }
```

If you want to add a box shadow in that color use:

Here you see how a box with a 4 pixel `rgb(199, 170, 158)` colored shadow looks like.

```
.boxshadow{ -moz-box-shadow:4px 4px 4px  
4px rgb(199, 170, 158); -webkit-box-  
shadow:4px 4px 4px 4px rgb(199, 170, 158);  
box-shadow:4px 4px 4px 4px rgb(199, 170,  
158) }
```

Background

The CSS property to change the background color of an element to RYB 199, 175, 158 is called "background". The background property can be set on classes, ids or directly on the HTML element.

```
.background, #background, body{  
background: rgb(199, 170, 158) }
```

If only the background color should be changed can be used:

```
.background{ background-color: rgb(199,  
170, 158) }
```

This example shows the color as background, it is applied via the CSS property "background".

To optimize and compress your CSS code, you can use our [online CSS compressor and optimizer](#) based on csstidy. If you want to create a linear or radial gradient as background or border, check our [CSS Gradient Generator](#).

Hey! You found this booklet interesting? Support Converting Colors with the new Membership Option!

The pro membership hides all ads, plus gives you double the colors in the color bucket, and more awesome pro features!

[Learn more, Memberships starting at \\$2.50/m!](#)

**Follow me
on Twitter!**

@ConvertingColor