

Converting Colors

`RYB(199, 175, 175)`

Have a look what the booklet for
RYB(199, 175, 175) contains.

RYB(199, 175, 175)	3
<i>Conversions</i>	4
<i>Details</i>	6
<i>Harmonies</i>	11
<i>Previews</i>	23
<i>Color Blindness Simulation</i>	26
<i>CSS Examples</i>	29

Color

R_YB(199, 175, 175)

Conversions

Conversions Part 1

Format	Color
Hex	C7AFAF
RGB	199, 175, 175
RGB Percent	78%, 69%, 69%
CMY	0.2196, 0.3137, 0.3137
CMYK	0.00, 0.12, 0.12, 0.22
HSL	0°, 18%, 73%
HSV	0°, 12%, 78%
XYZ	46.6210, 45.8972, 46.9593
YIQ	182.1760, 14.3040, 5.0880

Conversions

Conversions Part 2

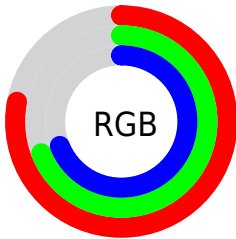
Format	Color
R_{YB}	199, 175, 175
Decimal	13086639
CIE Lab	73.48, 8.64, 3.17
CIE LCh	73, 9.200, 20.136
Yxy	45.8972, 0.3343, 0.3291
Android (android.graphics.Color)	4291276719 (0xFFC7AFAF)
YUV	182.1760, -3.5378, 14.7546
Hunter-Lab	67.7475, 4.2783, 6.3263

Details

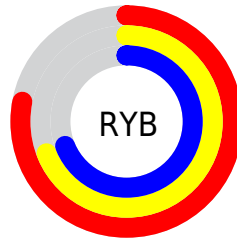
The RYB color **199, 175, 175** is a light color, and the websafe version is hex **CC9999**. A complement of this color would be **175, 187, 199**, and the grayscale version is **182, 182, 182**.

A 20% lighter version of the original color is **255, 231, 230**, and **145, 123, 123** is the 20% darker color. If you saturate the color by 10%, you get **199, 155, 155**, and if you desaturate by 10%, it is **199, 195, 195**.

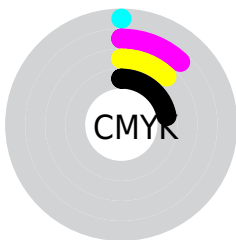
Distribution



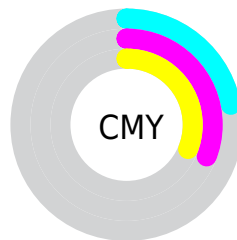
- Red (78%)
- Green (69%)
- Blue (69%)



- Red (78%)
- Yellow (69%)
- Blue (69%)



- Cyan (0%)
- Magenta (12%)
- Yellow (12%)
- Black (22%)



- Cyan (22%)
- Magenta (31%)
- Yellow (31%)

Brightness & Saturation Gradients


These gradients show how the RYB color 199, 175, 175 changes by changing the brightness by 10 percent. The first figure shows a shift by +10% for each color and the second figure -10%.

Similar to the brightness gradients but the following saturation gradients show a change of the RYB color 199, 175, 175 by changing the saturation by 10% instead.

 199, 175, 175


 199, 175, 175

255, 255, 255

 172, 148, 148


 255, 231, 230

 145, 123, 123

 119, 98, 98

 94, 74, 74


 70, 51, 51

 48, 30, 30

 28, 6, 5


 0, 0, 0

 199, 175, 175

 199, 175, 175

 199, 155, 155

 199, 195, 195

 199, 135, 135

 199, 207, 215

 199, 115, 115

 199, 217, 235

 199, 95, 95

 199, 227, 255

 199, 76, 76

 199, 56, 56

 199, 36, 36

 199, 16, 16

 199, 0, 0

Harmonies

Analogous

The Analogous color harmony consists of three colors that are next to each other on the color wheel.



196, 175, 184



199, 175, 175



197, 179, 168

Triad

The Triadic color harmony groups three colors that are evenly spaced from another and form a triangle on the color wheel.



199, 175, 175



169, 184, 181



169, 178, 197

Complementary

The Complementary color scheme is a pair of colors which are on the opposite of each other on the color wheel.



199, 175, 175



175, 187, 199

Split Complementary

Split-complementary colors differ from the complementary color scheme. The scheme consists of three colors, the original color and two neighbors of the complement color.



162, 175, 193



199, 175, 175



164, 177, 185

Square

The Square scheme is like the rectangle color scheme, but the four colors are evenly spaced on the color wheel.



199, 175, 175



165, 182, 166



160, 173, 186



179, 179, 196

Rectangle

The Rectangle color scheme consists of four colors that form a rectangle on the color wheel.



199, 175, 175



193, 189, 165



160, 173, 186



166, 177, 196

Sweetspot

The Sweet Spot groups the original color and five complimentary colors.



199, 175, 175



255, 245, 245



199, 175, 199



128, 121, 121



0, 0, 0



128, 128, 128

Same Dimension

The Same Dimension uses a secret algorithm to generate beautiful new colors.



199, 175, 175



255, 219, 219



199, 199, 175



99, 90, 90



163, 0, 0



36, 0, 0

Inverse Universe

The Inverse Universe completely reimagines the original color for something new.



175, 187, 199



219, 237, 255



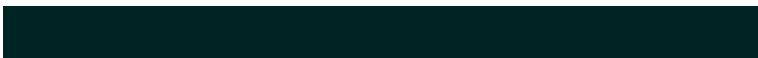
175, 183, 199



90, 95, 99



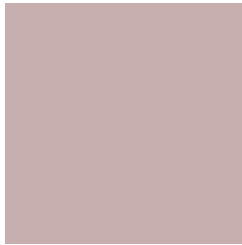
0, 82, 163



0, 18, 36

Previews

White Background



This preview shows how the RYB color 199, 175, 175 looks on a white background.

Color Contrast Check

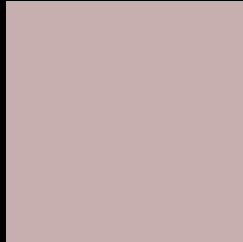
Large Text (above 18pt) WCAG AA × Fail

Any Text WCAG AA × Fail

Large Text (above 18pt) WCAG AAA × Fail

Any Text WCAG AAA × Fail

Black Background



This preview shows how the RYB color 199, 175, 175 looks on a black background.

Color Contrast Check

Large Text (above 18pt) WCAG AA ✓ Pass

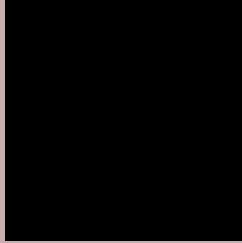
Any Text WCAG AA ✓ Pass

Large Text (above 18pt) WCAG AAA ✓ Pass

Any Text WCAG AAA ✓ Pass

If you want to check with other color combinations, try the [Color Contrast Checker](#).

RYB 199, 175, 175 Background



This preview shows how black text looks on a background with the RYB color 199, 175, 175.



This preview shows how white text looks on a background with the RYB color 199, 175, 175.

Color Blindness Simulation

Color vision deficiency is a very complex topic, and I could not describe the different causes any better than Wikipedia does, so if you want to learn more, you should check out their [article about color blindness](#).


Dichromacy



Original Color
199, 175, 175

Protanopia
184, 181, 178

Deuteranopia
200, 175, 175



Tritanopia
201, 173, 187

Trichromacy



Original Color

199, 175, 175

Protanomaly

189, 178, 177

Deuteranomaly

200, 175, 175

Tritanomaly

200, 174, 183

Monochromacy



Original Color

199, 175, 175

Achromatopsia

182, 182, 182

Achromatomaly

188, 179, 179

CSS Examples

Text

The CSS property to change the color of the text to RGB 199, 175, 175 is called "color". The color property can be set on classes, ids or directly on the HTML element.

This example shows how text in the color rgb(199, 175, 175) looks like.

```
.text, #text, p{  
    color:rgb(199, 175, 175)  
}
```

If you want to add a text shadow in that color use the text-shadow property, you can generate a text shadow directly with our [CSS Text Shadow Generator](#).

Here you see how black text with a 4 pixel rgb(199, 175, 175) colored shadow looks like.

```
.shadow{ text-shadow: 4px 4px 2px rgb(199, 175, 175) }
```

Border

The CSS property to change the border of an element to RYB 199, 175, 175 is called "border". The border property can be set on classes, ids or directly on the HTML element.

This example shows the color as border, it can be applied via the CSS property "border" or "border-color".

```
.border, #border, table{ border:4px solid rgb(199, 175, 175) }
```

If only the border color should be changed use the property `border-color`.

```
.border{ border-color:rgb(199, 175, 175) }
```

If you want to add a box shadow in that color use:

Here you see how a box with a 4 pixel `rgb(199, 175, 175)` colored shadow looks like.

```
.boxshadow{ -moz-box-shadow:4px 4px 4px  
4px rgb(199, 175, 175); -webkit-box-  
shadow:4px 4px 4px 4px rgb(199, 175, 175);  
box-shadow:4px 4px 4px 4px rgb(199, 175,  
175) }
```

Background

The CSS property to change the background color of an element to RYB 199, 175, 175 is called "background". The background property can be set on classes, ids or directly on the HTML element.

```
.background, #background, body{  
background: rgb(199, 175, 175) }
```

If only the background color should be changed can be used:

```
.background{ background-color: rgb(199,  
175, 175) }
```

This example shows the color as background, it is applied via the CSS property "background".

To optimize and compress your CSS code, you can use our [online CSS compressor and optimizer](#) based on csstidy. If you want to create a linear or radial gradient as background or border, check our [CSS Gradient Generator](#).

Hey! You found this booklet interesting? Support Converting Colors with the new Membership Option!

The pro membership hides all ads, plus gives you double the colors in the color bucket, and more awesome pro features!

[Learn more, Memberships starting at \\$2.50/m!](#)

**Follow me
on Twitter!**

@ConvertingColor