

Converting Colors

`RYB(200, 146, 137)`

Have a look what the booklet for
RYB(200, 146, 137) contains.

RYB(200, 146, 137)	3
<i>Conversions</i>	4
<i>Details</i>	6
<i>Harmonies</i>	11
<i>Previews</i>	23
<i>Color Blindness Simulation</i>	26
<i>CSS Examples</i>	29

Color

R_YB(200, 146, 137)

Conversions

Conversions Part 1

Format	Color
Hex	C89189
RGB	200, 145, 137
RGB Percent	78%, 57%, 54%
CMY	0.2157, 0.4319, 0.4627
CMYK	0.00, 0.28, 0.32, 0.22
HSL	8°, 36%, 66%
HSV	8°, 32%, 78%
XYZ	38.4411, 34.2981, 28.2610
YIQ	160.5330, 35.3480, 9.1720

Conversions

Conversions Part 2

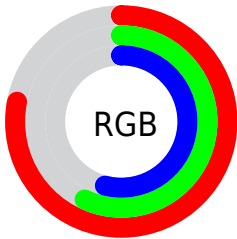
Format	Color
R _{YB}	200, 146, 137
Decimal	13144457
CIE Lab	65.20, 19.77, 12.42
CIE LCh	65, 23.346, 32.141
Yxy	34.2981, 0.3806, 0.3396
Android (android.graphics.Color)	4291334537 (0xFFC89189)
YUV	160.5330, -11.6018, 34.6126
Hunter-Lab	58.5646, 14.6772, 12.3841

Details

The RYB color **200, 146, 137** is a light color, and the websafe version is hex **CC9999**. A complement of this color would be **137, 166, 200**, and the grayscale version is **161, 161, 161**.

A 20% lighter version of the original color is **255, 200, 190**, and **145, 95, 87** is the 20% darker color. If you saturate the color by 10%, you get **200, 128, 117**, and if you desaturate by 10%, it is **200, 163, 157**.

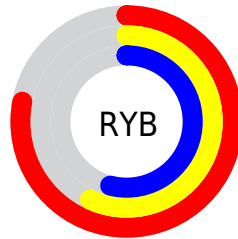
Distribution



Red (78%)

Green (57%)

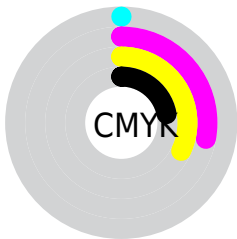
Blue (54%)



Red (78%)

Yellow (57%)

Blue (54%)

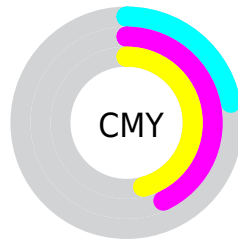


Cyan (0%)

Magenta (28%)

Yellow (32%)

Black (22%)



Cyan (22%)

Magenta (43%)

Yellow (46%)

Brightness & Saturation Gradients

These gradients show how the RYB color 200, 146, 137 changes by changing the brightness by 10 percent. The first figure shows a shift by +10% for each color and the second figure -10%.

Similar to the brightness gradients but the following saturation gradients show a change of the RYB color 200, 146, 137 by changing the saturation by 10% instead.

 200, 146, 137

255, 255, 255

 255, 200, 190

 255, 230, 218

 247, 255, 247

 200, 146, 137

 172, 120, 112

 145, 95, 87


 118, 71, 64


 92, 48, 42


 67, 25, 22

 44, 2, 0


 0, 0, 0

 200, 146, 137

 200, 128, 117


 200, 146, 137

 200, 163, 157

 200, 112, 97


 200, 180, 177

 200, 94, 77

 200, 197, 197

 200, 78, 57

 200, 208, 217

 200, 60, 37

 200, 217, 237

 200, 43, 17

 200, 226, 255

 200, 29, 0

 200, 228, 255

Harmonies

Analogous

The Analogous color harmony consists of three colors that are next to each other on the color wheel.



199, 143, 157



200, 146, 137



190, 170, 122

Triad

The Triadic color harmony groups three colors that are evenly spaced from another and form a triangle on the color wheel.



200, 146, 137



126, 159, 168



135, 153, 200

Complementary

The Complementary color scheme is a pair of colors which are on the opposite of each other on the color wheel.



200, 146, 137



137, 166, 200

Split Complementary

Split-complementary colors differ from the complementary color scheme. The scheme consists of three colors, the original color and two neighbors of the complement color.



109, 143, 195



200, 146, 137



105, 141, 170

Square

The Square scheme is like the rectangle color scheme, but the four colors are evenly spaced on the color wheel.



200, 146, 137



123, 164, 138



97, 136, 180



164, 152, 194

Rectangle

The Rectangle color scheme consists of four colors that form a rectangle on the color wheel.



200, 146, 137



156, 179, 117



97, 136, 180



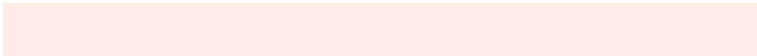
125, 150, 199

Sweetspot

The Sweet Spot groups the original color and five complimentary colors.



200, 146, 137



255, 235, 232



200, 137, 193



128, 115, 113



0, 0, 0



128, 128, 128

Same Dimension

The Same Dimension uses a secret algorithm to generate beautiful new colors.



200, 146, 137



255, 172, 158



176, 200, 137



99, 91, 90



163, 23, 0



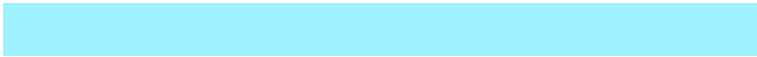
36, 5, 0

Inverse Universe

The Inverse Universe completely reimagines the original color for something new.



137, 166, 200



158, 203, 255



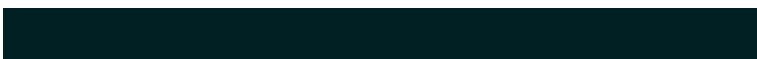
137, 154, 200



90, 94, 99



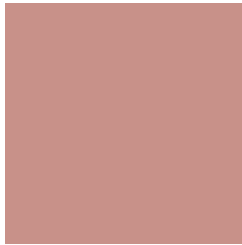
0, 76, 163



0, 17, 36

Previews

White Background



This preview shows how the RYB color 200, 146, 137 looks on a white background.

Color Contrast Check

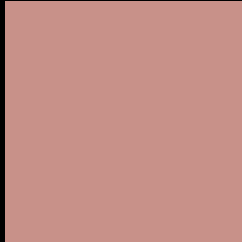
Large Text (above 18pt) WCAG AA × Fail

Any Text WCAG AA × Fail

Large Text (above 18pt) WCAG AAA × Fail

Any Text WCAG AAA × Fail

Black Background



This preview shows how the RYB color 200, 146, 137 looks on a black background.

Color Contrast Check

Large Text (above 18pt) WCAG AA ✓ Pass

Any Text WCAG AA ✓ Pass

Large Text (above 18pt) WCAG AAA ✓ Pass

Any Text WCAG AAA ✓ Pass

If you want to check with other color combinations, try the [Color Contrast Checker](#).

RYB 200, 146, 137 Background



This preview shows how black text looks on a background with the RYB color 200, 146, 137.



This preview shows how white text looks on a background with the RYB color 200, 146, 137.

Color Blindness Simulation

Color vision deficiency is a very complex topic, and I could not describe the different causes any better than Wikipedia does, so if you want to learn more, you should check out their [article about color blindness](#).

Dichromacy



Original Color
200, 146, 137

Protanopia
155, 165, 144

Deuteranopia
182, 163, 136



Tritanopia
202, 142, 153

Trichromacy



Original Color

200, 146, 137

Protanomaly

178, 159, 141

Deuteranomaly

189, 155, 136

Tritanomaly

201, 143, 147

Monochromacy



Original Color

200, 146, 137

Achromatopsia

160, 160, 160

Achromatomaly

175, 155, 152

CSS Examples

Text

The CSS property to change the color of the text to RYB 200, 146, 137 is called "color". The color property can be set on classes, ids or directly on the HTML element.

This example shows how text in the color rgb(200, 145, 137) looks like.

```
.text, #text, p{  
    color:rgb(200, 145, 137)  
}
```

If you want to add a text shadow in that color use the text-shadow property, you can generate a text shadow directly with our [CSS Text Shadow Generator](#).

Here you see how black text with a 4 pixel rgb(200, 145, 137) colored shadow looks like.

```
.shadow{ text-shadow: 4px 4px 2px rgb(200, 145, 137) }
```

Border

The CSS property to change the border of an element to RYB 200, 146, 137 is called "border". The border property can be set on classes, ids or directly on the HTML element.

This example shows the color as border, it can be applied via the CSS property "border" or "border-color".

```
.border, #border, table{ border:4px solid rgb(200, 145, 137) }
```

If only the border color should be changed use the property `border-color`.

```
.border{ border-color:rgb(200, 145, 137) }
```

If you want to add a box shadow in that color use:

Here you see how a box with a 4 pixel `rgb(200, 145, 137)` colored shadow looks like.

```
.boxshadow{ -moz-box-shadow:4px 4px 4px  
4px rgb(200, 145, 137); -webkit-box-  
shadow:4px 4px 4px 4px rgb(200, 145, 137);  
box-shadow:4px 4px 4px 4px rgb(200, 145,  
137) }
```

Background

The CSS property to change the background color of an element to RYB 200, 146, 137 is called "background". The background property can be set on classes, ids or directly on the HTML element.

```
.background, #background, body{  
background: rgb(200, 145, 137) }
```

If only the background color should be changed can be used:

```
.background{ background-color: rgb(200,  
145, 137) }
```

This example shows the color as background, it is applied via the CSS property "background".

To optimize and compress your CSS code, you can use our [online CSS compressor and optimizer](#) based on csstidy. If you want to create a linear or radial gradient as background or border, check our [CSS Gradient Generator](#).

Hey! You found this booklet interesting? Support Converting Colors with the new Membership Option!

The pro membership hides all ads, plus gives you double the colors in the color bucket, and more awesome pro features!

[Learn more, Memberships starting at \\$2.50/m!](#)

**Follow me
on Twitter!**

@ConvertingColor