

Converting Colors

`RYB(200, 164, 153)`

Have a look what the booklet for
RYB(200, 164, 153) contains.

RYB(200, 164, 153)	3
<i>Conversions</i>	4
<i>Details</i>	6
<i>Harmonies</i>	11
<i>Previews</i>	23
<i>Color Blindness Simulation</i>	26
<i>CSS Examples</i>	29

Color

R_YB(200, 164, 153)

Conversions

Conversions Part 1

Format	Color
Hex	C8A299
RGB	200, 162, 153
RGB Percent	78%, 64%, 60%
CMY	0.2157, 0.3650, 0.4000
CMYK	0.00, 0.19, 0.24, 0.22
HSL	11°, 30%, 69%
HSV	11°, 24%, 78%
XYZ	42.4743, 40.3896, 35.6943
YIQ	172.3360, 25.5370, 5.2570

Conversions

Conversions Part 2

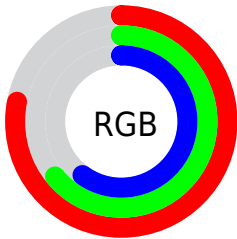
Format	Color
R_{YB}	200, 164, 153
Decimal	13148825
CIE _{Lab}	69.75, 12.67, 9.93
CIE _{LCh}	70, 16.101, 38.097
Yxy	40.3896, 0.3583, 0.3407
Android (android.graphics.Color)	4291338905 (0xFFC8A299)
YUV	172.3360, -9.5326, 24.2613
Hunter-Lab	63.5528, 8.0798, 11.1868

Details

The RYB color **200, 164, 153** is a light color, and the websafe version is hex **CC9999**. A complement of this color would be **153, 174, 200**, and the grayscale version is **172, 172, 172**.

A 20% lighter version of the original color is **255, 220, 207**, and **145, 112, 102** is the 20% darker color. If you saturate the color by 10%, you get **200, 149, 133**, and if you desaturate by 10%, it is **200, 179, 173**.

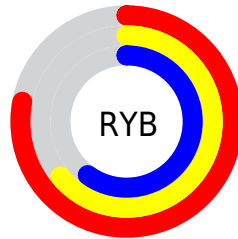
Distribution



Red (78%)

Green (64%)

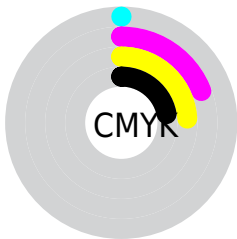
Blue (60%)



Red (78%)

Yellow (64%)

Blue (60%)

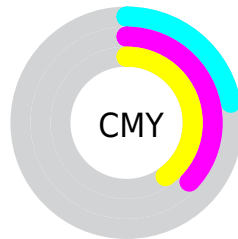


Cyan (0%)

Magenta (19%)

Yellow (24%)

Black (22%)



Cyan (22%)

Magenta (37%)

Yellow (40%)

Brightness & Saturation Gradients

These gradients show how the RYB color 200, 164, 153 changes by changing the brightness by 10 percent. The first figure shows a shift by +10% for each color and the second figure -10%.

Similar to the brightness gradients but the following saturation gradients show a change of the RYB color 200, 164, 153 by changing the saturation by 10% instead.

 200, 164, 153

 200, 164, 153

255, 255, 255

 172, 138, 127

 255, 220, 207

 145, 112, 102

 255, 253, 236

 119, 88, 78

 94, 64, 55

 69, 41, 34


 46, 22, 12


 24, 0, 1


 0, 0, 0


 200, 164, 153


 200, 164, 153

 200, 149, 133


 200, 179, 173

 200, 134, 113

 200, 194, 193

 200, 118, 93

 200, 206, 213

 200, 103, 73

 200, 215, 233

 200, 88, 53

 200, 224, 253

 200, 73, 33

 200, 228, 255

 200, 56, 13

 200, 47, 0

Harmonies

Analogous

The Analogous color harmony consists of three colors that are next to each other on the color wheel.



201, 160, 167



200, 164, 153



192, 185, 144

Triad

The Triadic color harmony groups three colors that are evenly spaced from another and form a triangle on the color wheel.



200, 164, 153



145, 168, 178



159, 168, 199

Complementary

The Complementary color scheme is a pair of colors which are on the opposite of each other on the color wheel.



200, 164, 153



153, 174, 200

Split Complementary

Split-complementary colors differ from the complementary color scheme. The scheme consists of three colors, the original color and two neighbors of the complement color.



142, 163, 197



200, 164, 153



134, 158, 179

Square

The Square scheme is like the rectangle color scheme, but the four colors are evenly spaced on the color wheel.



200, 164, 153



147, 175, 161



133, 158, 188



178, 165, 193

Rectangle

The Rectangle color scheme consists of four colors that form a rectangle on the color wheel.



200, 164, 153



162, 183, 141



133, 158, 188



153, 166, 199

Sweetspot

The Sweet Spot groups the original color and five complimentary colors.



200, 164, 153



255, 242, 237



200, 153, 191



128, 119, 117



0, 0, 0



128, 128, 128

Same Dimension

The Same Dimension uses a secret algorithm to generate beautiful new colors.



200, 164, 153



255, 200, 184



175, 200, 153



99, 91, 90



163, 38, 0



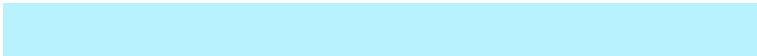
36, 9, 0

Inverse Universe

The Inverse Universe completely reimagines the original color for something new.



153, 174, 200



184, 216, 255



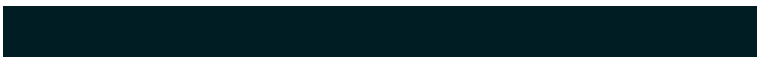
153, 164, 200



90, 94, 99



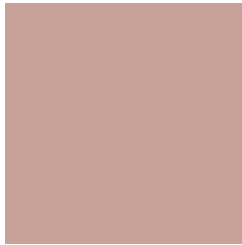
0, 73, 163



0, 16, 36

Previews

White Background



This preview shows how the RYB color 200, 164, 153 looks on a white background.

Color Contrast Check

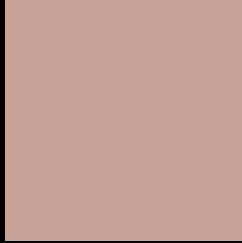
Large Text (above 18pt) WCAG AA × Fail

Any Text WCAG AA × Fail

Large Text (above 18pt) WCAG AAA × Fail

Any Text WCAG AAA × Fail

Black Background



This preview shows how the RYB color 200, 164, 153 looks on a black background.

Color Contrast Check

Large Text (above 18pt) WCAG AA ✓ Pass

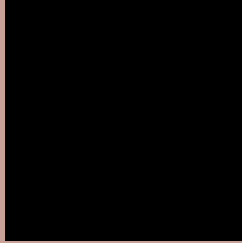
Any Text WCAG AA ✓ Pass

Large Text (above 18pt) WCAG AAA ✓ Pass

Any Text WCAG AAA ✓ Pass

If you want to check with other color combinations, try the [Color Contrast Checker](#).

RYB 200, 164, 153 Background



This preview shows how black text looks on a background with the RYB color 200, 164, 153.



This preview shows how white text looks on a background with the RYB color 200, 164, 153.

Color Blindness Simulation

Color vision deficiency is a very complex topic, and I could not describe the different causes any better than Wikipedia does, so if you want to learn more, you should check out their [article about color blindness](#).


Dichromacy



Original Color
200, 164, 153

Protanopia
168, 177, 157

Deuteranopia
194, 168, 153



Tritanopia
202, 159, 171

Trichromacy



Original Color
200, 164, 153

Protanomaly
185, 174, 156

Deuteranomaly
196, 166, 153

Tritanomaly
201, 160, 164

Monochromacy



Original Color
200, 164, 153

Achromatopsia
172, 172, 172

Achromatomaly
182, 169, 165

CSS Examples

Text

The CSS property to change the color of the text to RYB 200, 164, 153 is called "color". The color property can be set on classes, ids or directly on the HTML element.

This example shows how text in the color rgb(200, 162, 153) looks like.

```
.text, #text, p{  
    color:rgb(200, 162, 153)  
}
```

If you want to add a text shadow in that color use the text-shadow property, you can generate a text shadow directly with our [CSS Text Shadow Generator](#).

Here you see how black text with a 4 pixel rgb(200, 162, 153) colored shadow looks like.

```
.shadow{ text-shadow: 4px 4px 2px rgb(200, 162, 153) }
```

Border

The CSS property to change the border of an element to RYB 200, 164, 153 is called "border". The border property can be set on classes, ids or directly on the HTML element.

This example shows the color as border, it can be applied via the CSS property "border" or "border-color".

```
.border, #border, table{ border:4px solid rgb(200, 162, 153) }
```

If only the border color should be changed use the property `border-color`.

```
.border{ border-color:rgb(200, 162, 153) }
```

If you want to add a box shadow in that color use:

Here you see how a box with a 4 pixel `rgb(200, 162, 153)` colored shadow looks like.

```
.boxshadow{ -moz-box-shadow:4px 4px 4px  
4px rgb(200, 162, 153); -webkit-box-  
shadow:4px 4px 4px 4px rgb(200, 162, 153);  
box-shadow:4px 4px 4px 4px rgb(200, 162,  
153) }
```

Background

The CSS property to change the background color of an element to RYB 200, 164, 153 is called "background". The background property can be set on classes, ids or directly on the HTML element.

```
.background, #background, body{  
background: rgb(200, 162, 153) }
```

If only the background color should be changed can be used:

```
.background{ background-color: rgb(200,  
162, 153) }
```

This example shows the color as background, it is applied via the CSS property "background".

To optimize and compress your CSS code, you can use our [online CSS compressor and optimizer](#) based on csstidy. If you want to create a linear or radial gradient as background or border, check our [CSS Gradient Generator](#).

Hey! You found this booklet interesting? Support Converting Colors with the new Membership Option!

The pro membership hides all ads, plus gives you double the colors in the color bucket, and more awesome pro features!

[Learn more, Memberships starting at \\$2.50/m!](#)

**Follow me
on Twitter!**

@ConvertingColor