

Converting Colors

`RYB(201, 201, 97)`

Have a look what the booklet for
RYB(201, 201, 97) contains.

RYB(201, 201, 97)	3
<i>Conversions</i>	4
<i>Details</i>	6
<i>Harmonies</i>	11
<i>Previews</i>	23
<i>Color Blindness Simulation</i>	26
<i>CSS Examples</i>	29

Color

$\text{RYB}(201, 201, 97)$

Conversions

Conversions Part 1

Format	Color
Hex	C99561
RGB	201, 149, 97
RGB Percent	79%, 58%, 38%
CMY	0.2118, 0.4157, 0.6196
CMYK	0.00, 0.26, 0.52, 0.21
HSL	30°, 49%, 58%
HSV	30°, 52%, 79%
XYZ	36.9925, 34.7755, 16.0719
YIQ	158.6200, 47.6840, -5.1480

Conversions

Conversions Part 2

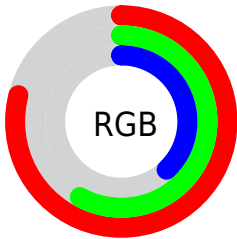
Format	Color
RYB	201, 201, 97
Decimal	13210977
CIELab	65.57, 13.45, 34.95
CIElCh	66, 37.445, 68.952
Yxy	34.7755, 0.4211, 0.3959
Android (android.graphics.Color)	4291401057 (0xFFC99561)
YUV	158.6200, -30.3787, 37.1673
Hunter-Lab	58.9707, 8.7748, 25.1206

Details

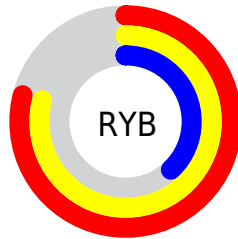
The RYB color **201, 201, 97** is a light color, and the websafe version is hex **CC9966**. A complement of this color would be **97, 132, 201**, and the grayscale version is **159, 159, 159**.

A 20% lighter version of the original color is **249, 255, 148**, and **138, 144, 49** is the 20% darker color. If you saturate the color by 10%, you get **201, 201, 77**, and if you desaturate by 10%, it is **201, 201, 117**.

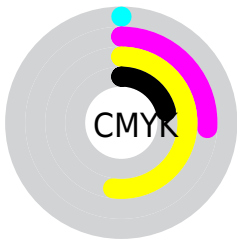
Distribution



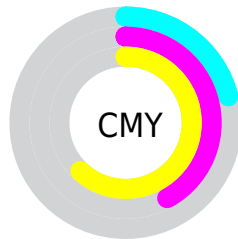
- Red (79%)
- Green (58%)
- Blue (38%)



- Red (79%)
- Yellow (79%)
- Blue (38%)



- Cyan (0%)
- Magenta (26%)
- Yellow (52%)
- Black (21%)




- Cyan (21%)
- Magenta (42%)
- Yellow (62%)


Brightness & Saturation Gradients

These gradients show how the RYB color 201, 201, 97 changes by changing the brightness by 10 percent. The first figure shows a shift by +10% for each color and the second figure -10%.

Similar to the brightness gradients but the following saturation gradients show a change of the RYB color 201, 201, 97 by changing the saturation by 10% instead.

 201, 201, 97  201, 201, 97

255, 255, 255  170, 172, 73

 249, 255, 148  138, 144, 49

 209, 255, 175  108, 117, 26

 203, 255, 203  67, 90, 1

 231, 255, 231  64, 56, 0

 39, 12, 0

 0, 0, 0

 201, 201, 97  201, 201, 97

 201, 201, 77  201, 201, 117

■ 201, 201, 57

■ 201, 201, 137

■ 201, 201, 37

■ 201, 201, 157

■ 201, 201, 17

■ 201, 201, 177

■ 199, 201, 0

■ 201, 200, 198

■ 201, 206, 218

■ 201, 213, 238

■ 201, 219, 255

■ 201, 223, 255

Harmonies

Analogous

The Analogous color harmony consists of three colors that are next to each other on the color wheel.



220, 142, 119



201, 201, 97



103, 171, 92

Triad

The Triadic color harmony groups three colors that are evenly spaced from another and form a triangle on the color wheel.



201, 201, 97



38, 110, 177



176, 147, 212

Complementary

The Complementary color scheme is a pair of colors which are on the opposite of each other on the color wheel.



201, 201, 97



97, 132, 201

Split Complementary

Split-complementary colors differ from the complementary color scheme. The scheme consists of three colors, the original color and two neighbors of the complement color.



126, 151, 225



201, 201, 97



0, 93, 200

Square

The Square scheme is like the rectangle color scheme, but the four colors are evenly spaced on the color wheel.



201, 201, 97



92, 147, 175



64, 127, 221



209, 136, 184

Rectangle

The Rectangle color scheme consists of four colors that form a rectangle on the color wheel.



201, 201, 97



99, 167, 118



64, 127, 221



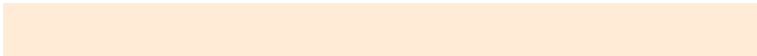
161, 151, 218

Sweetspot

The Sweet Spot groups the original color and five complimentary colors.



201, 201, 97



253, 255, 214



201, 97, 149



128, 126, 103



0, 0, 0



128, 128, 128

Same Dimension

The Same Dimension uses a secret algorithm to generate beautiful new colors.



201, 201, 97



255, 255, 97



97, 201, 97



99, 97, 90



161, 163, 0



36, 36, 0

Inverse Universe

The Inverse Universe completely reimagines the original color for something new.



97, 132, 201



97, 150, 255



97, 97, 201



90, 93, 99



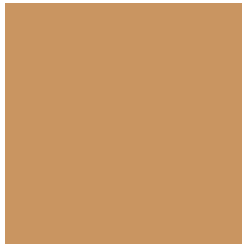
0, 55, 163



0, 12, 36

Previews

White Background



This preview shows how the RYB color 201, 201, 97 looks on a white background.

Color Contrast Check

Large Text (above 18pt) WCAG AA × Fail

Any Text WCAG AA × Fail

Large Text (above 18pt) WCAG AAA × Fail

Any Text WCAG AAA × Fail

Black Background



This preview shows how the RYB color 201, 201, 97 looks on a black background.

Color Contrast Check

Large Text (above 18pt) WCAG AA ✓ Pass

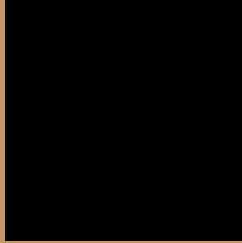
Any Text WCAG AA ✓ Pass

Large Text (above 18pt) WCAG AAA ✓ Pass

Any Text WCAG AAA ✓ Pass

If you want to check with other color combinations, try the [Color Contrast Checker](#).

R Y B 201, 201, 97 Background



This preview shows how black text looks on a background with the RYB color 201, 201, 97.



This preview shows how white text looks on a background with the RYB color 201, 201, 97.

Color Blindness Simulation

Color vision deficiency is a very complex topic, and I could not describe the different causes any better than Wikipedia does, so if you want to learn more, you should check out their [article about color blindness](#).

Dichromacy



Original Color
201, 201, 97

Protanopia
118, 174, 101

Deuteranopia
167, 193, 96



Tritanopia
206, 142, 153

Trichromacy



Original Color
201, 201, 97

Protanomaly
142, 184, 100

Deuteranomaly
178, 196, 96

Tritanomaly
204, 147, 133

Monochromacy



Original Color
201, 201, 97

Achromatopsia
159, 159, 159

Achromatomaly
174, 174, 136

CSS Examples

Text

The CSS property to change the color of the text to RYB 201, 201, 97 is called "color". The color property can be set on classes, ids or directly on the HTML element.

This example shows how text in the color `rgb(201, 149, 97)` looks like.

```
.text, #text, p{  
    color:rgb(201, 149, 97)  
}
```

If you want to add a text shadow in that color use the text-shadow property, you can generate a text shadow directly with our [CSS Text Shadow Generator](#).

Here you see how black text with a 4 pixel rgb(201, 149, 97) colored shadow looks like.

```
.shadow{ text-shadow: 4px 4px 2px rgb(201, 149, 97) }
```

Border

The CSS property to change the border of an element to RYB 201, 201, 97 is called "border". The border property can be set on classes, ids or directly on the HTML element.

This example shows the color as border, it can be applied via the CSS property "border" or "border-color".

```
.border, #border, table{ border:4px solid rgb(201, 149, 97) }
```

If only the border color should be changed use the property `border-color`.

```
.border{ border-color:rgb(201, 149, 97) }
```

If you want to add a box shadow in that color use:

Here you see how a box with a 4 pixel `rgb(201, 149, 97)` colored shadow looks like.

```
.boxshadow{ -moz-box-shadow:4px 4px 4px  
4px rgb(201, 149, 97); -webkit-box-  
shadow:4px 4px 4px 4px rgb(201, 149, 97);  
box-shadow:4px 4px 4px 4px rgb(201, 149,  
97) }
```

Background

The CSS property to change the background color of an element to RGB 201, 149, 97 is called "background".

The background property can be set on classes, ids or directly on the HTML element.

```
.background, #background, body{  
background: rgb(201, 149, 97) }
```

If only the background color should be changed can be used:

```
.background{ background-color: rgb(201,  
149, 97) }
```

This example shows the color as background, it is applied via the CSS property "background".

To optimize and compress your CSS code, you can use our [online CSS compressor and optimizer](#) based on csstidy. If you want to create a linear or radial gradient as background or border, check our [CSS Gradient Generator](#).

Hey! You found this booklet interesting? Support Converting Colors with the new Membership Option!

The pro membership hides all ads, plus gives you double the colors in the color bucket, and more awesome pro features!

[Learn more, Memberships starting at \\$2.50/m!](#)

**Follow me
on Twitter!**

@ConvertingColor