

Converting Colors

`RYB(203, 182, 144)`

Have a look what the booklet for
RYB(203, 182, 144) contains.

RYB(203, 182, 144)	3
<i>Conversions</i>	4
<i>Details</i>	6
<i>Harmonies</i>	11
<i>Previews</i>	23
<i>Color Blindness Simulation</i>	26
<i>CSS Examples</i>	29

Color

R_YB(203, 182, 144)

Conversions

Conversions Part 1	
Format	Color
Hex	CBA790
RGB	203, 167, 144
RGB Percent	80%, 65%, 56%
CMY	0.2039, 0.3447, 0.4353
CMYK	0.00, 0.18, 0.29, 0.20
HSL	24°, 36%, 68%
HSV	24°, 29%, 80%
XYZ	43.5021, 42.3891, 32.2747
YIQ	175.1420, 28.8390, 0.4790

Conversions

Conversions Part 2

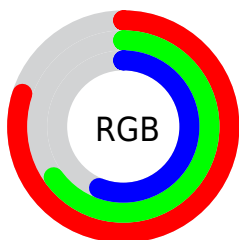
Format	Color
RYB	203, 182, 144
Decimal	13346704
CIELab	71.14, 9.73, 16.89
CIELCh	71, 19.489, 60.054
Yxy	42.3891, 0.3681, 0.3587
Android (android.graphics.Color)	4291536784 (0xFFCBA790)
YUV	175.1420, -15.3530, 24.4315
Hunter-Lab	65.1069, 5.3302, 16.1837

Details

The RYB color **203, 182, 144** is a light color, and the websafe version is hex **CC9999**. A complement of this color would be **144, 166, 203**, and the grayscale version is **175, 175, 175**.

A 20% lighter version of the original color is **255, 239, 198**, and **148, 128, 94** is the 20% darker color. If you saturate the color by 10%, you get **203, 175, 124**, and if you desaturate by 10%, it is **203, 188, 164**.

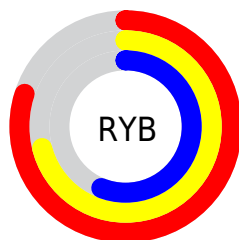
Distribution



Red (80%)

Green (65%)

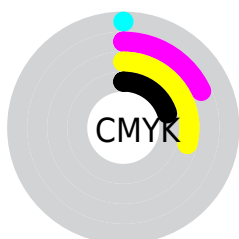
Blue (56%)



Red (80%)

Yellow (71%)

Blue (56%)

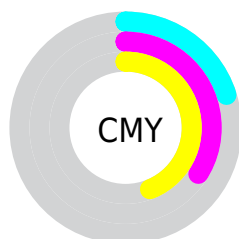


Cyan (0%)

Magenta (18%)

Yellow (29%)

Black (20%)



Cyan (20%)

Magenta (34%)

Yellow (44%)

Brightness & Saturation Gradients

These gradients show how the RYB color 203, 182, 144 changes by changing the brightness by 10 percent. The first figure shows a shift by +10% for each color and the second figure -10%.

Similar to the brightness gradients but the following saturation gradients show a change of the RYB color 203, 182, 144 by changing the saturation by 10% instead.

 203, 182, 144

255, 255, 255


 255, 239, 198

 231, 255, 226


 203, 182, 144

 175, 157, 118

 148, 128, 94

 121, 106, 70

 96, 81, 47

 71, 59, 26

 48, 48, 0

 25, 0, 0

 0, 0, 0

 203, 182, 144


 203, 182, 144

 203, 175, 124


 203, 188, 164

 203, 167, 103


 203, 196, 185

 203, 160, 83


 203, 204, 205

 203, 154, 63

 203, 212, 225

 203, 144, 43

 203, 219, 246

 203, 139, 22

 203, 225, 255

 203, 132, 2

 203, 229, 255

 203, 132, 0

 203, 229, 255

Harmonies

Analogous

The Analogous color harmony consists of three colors that are next to each other on the color wheel.



211, 164, 157



203, 182, 144



161, 188, 139

Triad

The Triadic color harmony groups three colors that are evenly spaced from another and form a triangle on the color wheel.



203, 182, 144



132, 161, 184



177, 170, 205

Complementary

The Complementary color scheme is a pair of colors which are on the opposite of each other on the color wheel.



203, 182, 144



144, 166, 203

Split Complementary

Split-complementary colors differ from the complementary color scheme. The scheme consists of three colors, the original color and two neighbors of the complement color.



154, 170, 209



203, 182, 144



126, 157, 191

Square

The Square scheme is like the rectangle color scheme, but the four colors are evenly spaced on the color wheel.



203, 182, 144



148, 176, 183



134, 162, 204



197, 164, 192

Rectangle

The Rectangle color scheme consists of four colors that form a rectangle on the color wheel.



203, 182, 144



141, 177, 143



134, 162, 204



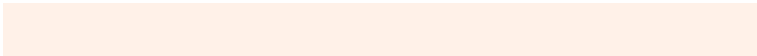
170, 172, 207

Sweetspot

The Sweet Spot groups the original color and five complimentary colors.



203, 182, 144



255, 247, 232



203, 144, 180



128, 123, 113



0, 0, 0



128, 128, 128

Same Dimension

The Same Dimension uses a secret algorithm to generate beautiful new colors.



203, 182, 144



255, 224, 166



152, 203, 144



102, 99, 92



166, 107, 0



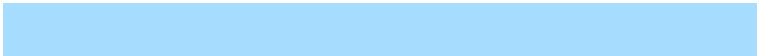
38, 25, 0

Inverse Universe

The Inverse Universe completely reimagines the original color for something new.



144, 166, 203



166, 200, 255



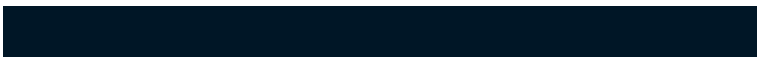
144, 150, 203



92, 96, 102



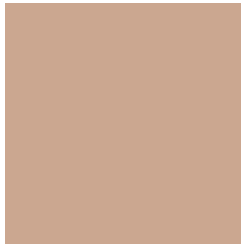
0, 63, 166



0, 14, 38

Previews

White Background



This preview shows how the RYB color 203, 182, 144 looks on a white background.

Color Contrast Check

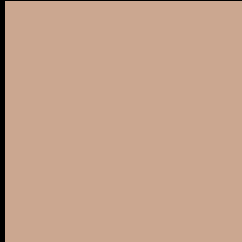
Large Text (above 18pt) WCAG AA × Fail

Any Text WCAG AA × Fail

Large Text (above 18pt) WCAG AAA × Fail

Any Text WCAG AAA × Fail

Black Background



This preview shows how the RYB color 203, 182, 144 looks on a black background.

Color Contrast Check

Large Text (above 18pt) WCAG AA ✓ Pass

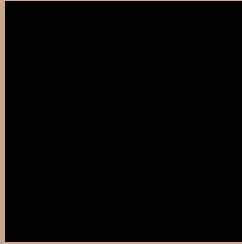
Any Text WCAG AA ✓ Pass

Large Text (above 18pt) WCAG AAA ✓ Pass

Any Text WCAG AAA ✓ Pass

If you want to check with other color combinations, try the [Color Contrast Checker](#).

RYB 203, 182, 144 Background



This preview shows how black text looks on a background with the RYB color 203, 182, 144.



This preview shows how white text looks on a background with the RYB color 203, 182, 144.

Color Blindness Simulation

Color vision deficiency is a very complex topic, and I could not describe the different causes any better than Wikipedia does, so if you want to learn more, you should check out their [article about color blindness](#).


Dichromacy



Original Color
203, 182, 144

Protanopia
161, 184, 147

Deuteranopia
202, 185, 144



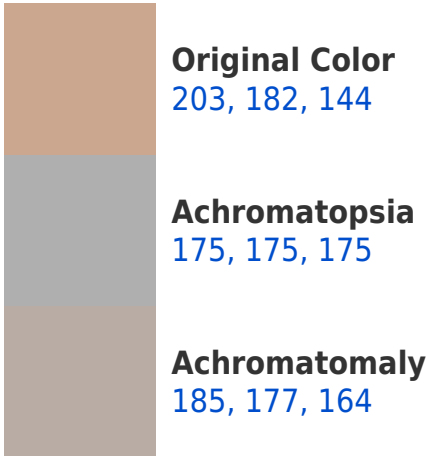
Tritanopia

206, 163, 175

Trichromacy



Monochromacy



CSS Examples

Text

The CSS property to change the color of the text to RGB 203, 182, 144 is called "color". The color property can be set on classes, ids or directly on the HTML element.

This example shows how text in the color rgb(203, 167, 144) looks like.

```
.text, #text, p{  
    color:rgb(203, 167, 144)  
}
```

If you want to add a text shadow in that color use the text-shadow property, you can generate a text shadow directly with our [CSS Text Shadow Generator](#).

Here you see how black text with a 4 pixel rgb(203, 167, 144) colored shadow looks like.

```
.shadow{ text-shadow: 4px 4px 2px rgb(203, 167, 144) }
```

Border

The CSS property to change the border of an element to RYB 203, 182, 144 is called "border". The border property can be set on classes, ids or directly on the HTML element.

This example shows the color as border, it can be applied via the CSS property "border" or "border-color".

```
.border, #border, table{ border:4px solid rgb(203, 167, 144) }
```

If only the border color should be changed use the property border-color.

```
.border{ border-color:rgb(203, 167, 144) }
```

If you want to add a box shadow in that color use:

Here you see how a box with a 4 pixel rgb(203, 167, 144) colored shadow looks like.

```
.boxshadow{ -moz-box-shadow:4px 4px 4px  
4px rgb(203, 167, 144); -webkit-box-  
shadow:4px 4px 4px 4px rgb(203, 167, 144);  
box-shadow:4px 4px 4px 4px rgb(203, 167,  
144) }
```

Background

The CSS property to change the background color of an element to RGB 203, 167, 144 is called "background". The background property can be set on classes, ids or directly on the HTML element.

```
.background, #background, body{  
background: rgb(203, 167, 144) }
```

If only the background color should be changed can be used:

```
.background{ background-color: rgb(203,  
167, 144) }
```

This example shows the color as background, it is applied via the CSS property "background".

To optimize and compress your CSS code, you can use our [online CSS compressor and optimizer](#) based on csstidy. If you want to create a linear or radial gradient as background or border, check our [CSS Gradient Generator](#).

Hey! You found this booklet
interesting? Support Converting
Colors with the new Membership
Option!

The pro membership hides all ads, plus gives you
double the colors in the color bucket, and more
awesome pro features!

[Learn more, Memberships starting at \\$2.50/m!](#)

**Follow me
on Twitter!**

@ConvertingColor