

Converting Colors

`RYB(204, 153, 153)`

Have a look what the booklet for
RYB(204, 153, 153) contains.

RYB(204, 153, 153)	3
<i>Conversions</i>	4
<i>Details</i>	6
<i>Harmonies</i>	11
<i>Previews</i>	23
<i>Color Blindness Simulation</i>	26
<i>CSS Examples</i>	29

Color

R_YB(204, 153, 153)

Conversions

Conversions Part 1

Format	Color
Hex	CC9999
RGB	204, 153, 153
RGB Percent	80%, 60%, 60%
CMY	0.2000, 0.4000, 0.4000
CMYK	0.00, 0.25, 0.25, 0.20
HSL	0°, 33%, 70%
HSV	0°, 25%, 80%
XYZ	42.0428, 37.9197, 35.2403
YIQ	168.2490, 30.3960, 10.8120

Conversions

Conversions Part 2

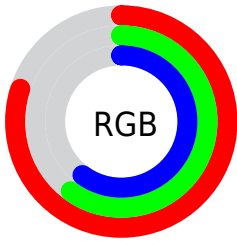
Format	Color
R_{YB}	204, 153, 153
Decimal	13408665
CIE _{Lab}	67.96, 19.06, 7.44
CIE _{LCh}	68, 20.467, 21.330
Yxy	37.9197, 0.3649, 0.3292
Android (android.graphics.Color)	4291598745 (0xFFCC9999)
YUV	168.2490, -7.5178, 31.3536
Hunter-Lab	61.5790, 14.1070, 9.1749

Details

The RYB color **204, 153, 153** is a light color, and the websafe version is hex **CC9999**. A complement of this color would be **153, 179, 204**, and the grayscale version is **168, 168, 168**.

A 20% lighter version of the original color is **255, 208, 207**, and **149, 102, 102** is the 20% darker color. If you saturate the color by 10%, you get **204, 133, 133**, and if you desaturate by 10%, it is **204, 173, 173**.

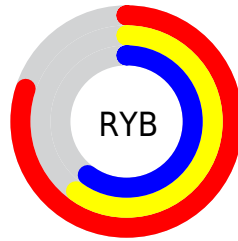
Distribution



Red (80%)

Green (60%)

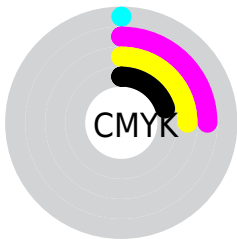
Blue (60%)



Red (80%)

Yellow (60%)

Blue (60%)

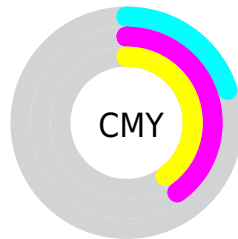


Cyan (0%)

Magenta (25%)

Yellow (25%)

Black (20%)



Cyan (20%)

Magenta (40%)


Yellow (40%)

Brightness & Saturation Gradients


These gradients show how the RYB color 204, 153, 153 changes by changing the brightness by 10 percent. The first figure shows a shift by +10% for each color and the second figure -10%.

Similar to the brightness gradients but the following saturation gradients show a change of the RYB color 204, 153, 153 by changing the saturation by 10% instead.

 204, 153, 153

 204, 153, 153

255, 255, 255

 176, 127, 127

 255, 208, 207

 149, 102, 102

 255, 236, 235

 122, 77, 78


 96, 54, 55


 72, 32, 34


 48, 11, 12

 22, 0, 0


 0, 0, 0

 204, 153, 153

 204, 153, 153

 204, 133, 133

 204, 173, 173

 204, 112, 112

 204, 194, 194

 204, 92, 92

 204, 209, 214

 204, 71, 71

 204, 220, 235

 204, 51, 51

 204, 230, 255

 204, 31, 31

 204, 10, 10

 204, 0, 0

Harmonies

Analogous

The Analogous color harmony consists of three colors that are next to each other on the color wheel.



199, 153, 172



204, 153, 153



199, 166, 138

Triad

The Triadic color harmony groups three colors that are evenly spaced from another and form a triangle on the color wheel.



204, 153, 153



142, 173, 170



137, 158, 202

Complementary

The Complementary color scheme is a pair of colors which are on the opposite of each other on the color wheel.



204, 153, 153



153, 179, 204

Split Complementary

Split-complementary colors differ from the complementary color scheme. The scheme consists of three colors, the original color and two neighbors of the complement color.



119, 151, 194



204, 153, 153



126, 156, 176

Square

The Square scheme is like the rectangle color scheme, but the four colors are evenly spaced on the color wheel.



204, 153, 153



131, 169, 134



115, 146, 178



162, 163, 200

Rectangle

The Rectangle color scheme consists of four colors that form a rectangle on the color wheel.



204, 153, 153



190, 188, 131



115, 146, 178



130, 156, 200

Sweetspot

The Sweet Spot groups the original color and five complimentary colors.



204, 153, 153



255, 235, 235



204, 153, 204



128, 115, 115



0, 0, 0



128, 128, 128

Same Dimension

The Same Dimension uses a secret algorithm to generate beautiful new colors.



204, 153, 153



255, 179, 179



202, 204, 153



102, 92, 92



166, 0, 0



38, 0, 0

Inverse Universe

The Inverse Universe completely reimagines the original color for something new.



153, 179, 204



179, 217, 255



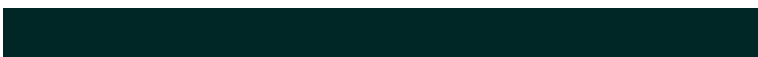
153, 170, 204



92, 97, 102



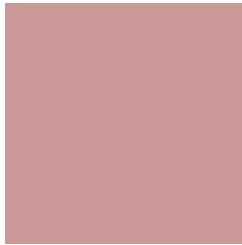
0, 83, 166



0, 19, 38

Previews

White Background



This preview shows how the RYB color 204, 153, 153 looks on a white background.

Color Contrast Check

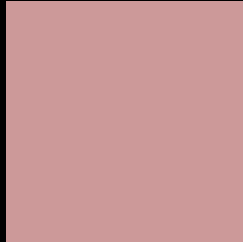
Large Text (above 18pt) WCAG AA × Fail

Any Text WCAG AA × Fail

Large Text (above 18pt) WCAG AAA × Fail

Any Text WCAG AAA × Fail

Black Background



This preview shows how the RYB color 204, 153, 153 looks on a black background.

Color Contrast Check

Large Text (above 18pt) WCAG AA ✓ Pass

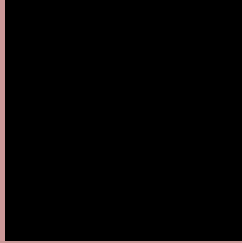
Any Text WCAG AA ✓ Pass

Large Text (above 18pt) WCAG AAA ✓ Pass

Any Text WCAG AAA ✓ Pass

If you want to check with other color combinations, try the [Color Contrast Checker](#).

RYB 204, 153, 153 Background



This preview shows how black text looks on a background with the RYB color 204, 153, 153.



This preview shows how white text looks on a background with the RYB color 204, 153, 153.

Color Blindness Simulation

Color vision deficiency is a very complex topic, and I could not describe the different causes any better than Wikipedia does, so if you want to learn more, you should check out their [article about color blindness](#).


Dichromacy



Original Color
204, 153, 153

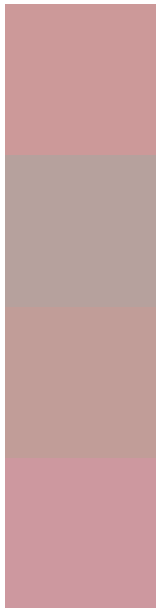
Protanopia
170, 170, 160

Deuteranopia
187, 162, 152



Tritanopia
205, 151, 163

Trichromacy



Original Color
204, 153, 153

Protanomaly
182, 162, 157

Deuteranomaly
193, 158, 152

Tritanomaly
205, 152, 159

Monochromacy



Original Color
204, 153, 153

Achromatopsia
168, 168, 168

Achromatomaly
181, 163, 163

CSS Examples

Text

The CSS property to change the color of the text to RYB 204, 153, 153 is called "color". The color property can be set on classes, ids or directly on the HTML element.

This example shows how text in the color `rgb(204, 153, 153)` looks like.

```
.text, #text, p{  
    color:rgb(204, 153, 153)  
}
```

If you want to add a text shadow in that color use the text-shadow property, you can generate a text shadow directly with our [CSS Text Shadow Generator](#).

Here you see how black text with a 4 pixel rgb(204, 153, 153) colored shadow looks like.

```
.shadow{ text-shadow: 4px 4px 2px rgb(204, 153, 153) }
```

Border

The CSS property to change the border of an element to RYB 204, 153, 153 is called "border". The border property can be set on classes, ids or directly on the HTML element.

This example shows the color as border, it can be applied via the CSS property "border" or "border-color".

```
.border, #border, table{ border:4px solid rgb(204, 153, 153) }
```

If only the border color should be changed use the property `border-color`.

```
.border{ border-color:rgb(204, 153, 153) }
```

If you want to add a box shadow in that color use:

Here you see how a box with a 4 pixel `rgb(204, 153, 153)` colored shadow looks like.

```
.boxshadow{ -moz-box-shadow:4px 4px 4px  
4px rgb(204, 153, 153); -webkit-box-  
shadow:4px 4px 4px 4px rgb(204, 153, 153);  
box-shadow:4px 4px 4px 4px rgb(204, 153,  
153) }
```

Background

The CSS property to change the background color of an element to RGB 204, 153, 153 is called "background". The background property can be set on classes, ids or directly on the HTML element.

```
.background, #background, body{  
background: rgb(204, 153, 153) }
```

If only the background color should be changed can be used:

```
.background{ background-color: rgb(204,  
153, 153) }
```

This example shows the color as background, it is applied via the CSS property "background".

To optimize and compress your CSS code, you can use our [online CSS compressor and optimizer](#) based on csstidy. If you want to create a linear or radial gradient as background or border, check our [CSS Gradient Generator](#).

Hey! You found this booklet interesting? Support Converting Colors with the new Membership Option!

The pro membership hides all ads, plus gives you double the colors in the color bucket, and more awesome pro features!

[Learn more, Memberships starting at \\$2.50/m!](#)

**Follow me
on Twitter!**

@ConvertingColor