

Converting Colors

`RYB(204, 160, 154)`

Have a look what the booklet for
RYB(204, 160, 154) contains.

RYB(204, 160, 154)	3
<i>Conversions</i>	4
<i>Details</i>	6
<i>Harmonies</i>	11
<i>Previews</i>	23
<i>Color Blindness Simulation</i>	26
<i>CSS Examples</i>	29

Color

R_YB(204, 160, 154)

Conversions

Conversions Part 1

Format	Color
Hex	CC9F9A
RGB	204, 159, 154
RGB Percent	80%, 62%, 60%
CMY	0.2000, 0.3751, 0.3961
CMYK	0.00, 0.22, 0.25, 0.20
HSL	6°, 33%, 70%
HSV	6°, 25%, 80%
XYZ	43.1942, 40.0898, 36.0334
YIQ	171.8850, 28.4250, 7.9850

Conversions

Conversions Part 2

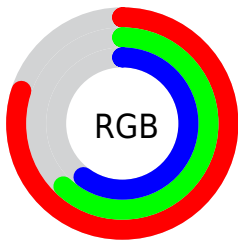
Format	Color
RYB	204, 160, 154
Decimal	13410202
CIELab	69.53, 15.74, 9.13
CIElCh	70, 18.193, 30.129
Yxy	40.0898, 0.3620, 0.3360
Android (android.graphics.Color)	4291600282 (0xFFCC9F9A)
YUV	171.8850, -8.8173, 28.1649
Hunter-Lab	63.3165, 10.9681, 10.5796

Details

The RYB color **204, 160, 154** is a light color, and the websafe version is hex **CC9999**. A complement of this color would be **154, 178, 204**, and the grayscale version is **172, 172, 172**.

A 20% lighter version of the original color is **255, 215, 208**, and **149, 107, 103** is the 20% darker color. If you saturate the color by 10%, you get **204, 142, 134**, and if you desaturate by 10%, it is **204, 179, 174**.

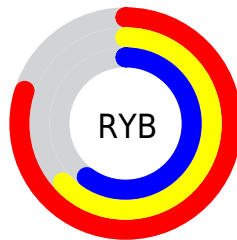
Distribution



Red (80%)

Green (62%)

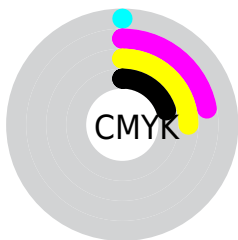
Blue (60%)



Red (80%)

Yellow (63%)

Blue (60%)

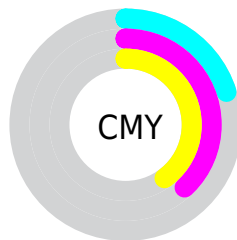


Cyan (0%)

Magenta (22%)

Yellow (25%)

Black (20%)



Cyan (20%)

Magenta (38%)


Yellow (40%)

Brightness & Saturation Gradients

These gradients show how the RYB color 204, 160, 154 changes by changing the brightness by 10 percent. The first figure shows a shift by +10% for each color and the second figure -10%.

Similar to the brightness gradients but the following saturation gradients show a change of the RYB color 204, 160, 154 by changing the saturation by 10% instead.

 204, 160, 154

 204, 160, 154

255, 255, 255

 176, 134, 128

 255, 215, 208


 149, 109, 103

 255, 246, 237

 122, 83, 79

 97, 60, 56

 72, 38, 35


 48, 18, 13

 27, 0, 1


 0, 0, 0

 204, 160, 154

 204, 160, 154

 204, 142, 134

 204, 179, 174

 204, 124, 113

 204, 196, 195

 204, 106, 93

 204, 209, 215

 204, 89, 72

 204, 219, 236

 204, 70, 52

 204, 228, 255

 204, 52, 32

 204, 230, 255

 204, 35, 11

 204, 25, 0

Harmonies

Analogous

The Analogous color harmony consists of three colors that are next to each other on the color wheel.



202, 158, 170



204, 160, 154



197, 176, 142

Triad

The Triadic color harmony groups three colors that are evenly spaced from another and form a triangle on the color wheel.



204, 160, 154



146, 172, 178



151, 165, 202

Complementary

The Complementary color scheme is a pair of colors which are on the opposite of each other on the color wheel.



204, 160, 154



154, 178, 204

Split Complementary

Split-complementary colors differ from the complementary color scheme. The scheme consists of three colors, the original color and two neighbors of the complement color.



133, 159, 198



204, 160, 154



131, 158, 179

Square

The Square scheme is like the rectangle color scheme, but the four colors are evenly spaced on the color wheel.



204, 160, 154



141, 174, 150



125, 154, 186



173, 166, 198

Rectangle

The Rectangle color scheme consists of four colors that form a rectangle on the color wheel.



204, 160, 154



174, 188, 138



125, 154, 186



144, 163, 202

Sweetspot

The Sweet Spot groups the original color and five complimentary colors.



204, 160, 154



255, 239, 237



204, 154, 199



128, 118, 117



0, 0, 0



128, 128, 128

Same Dimension

The Same Dimension uses a secret algorithm to generate beautiful new colors.



204, 160, 154



255, 190, 181



187, 204, 154



102, 93, 92



166, 20, 0



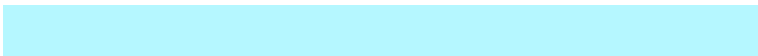
38, 4, 0

Inverse Universe

The Inverse Universe completely reimagines the original color for something new.



154, 178, 204



181, 216, 255



154, 168, 204



92, 97, 102



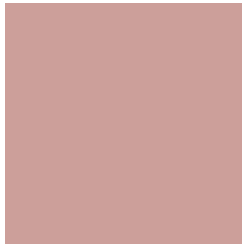
0, 78, 166



0, 18, 38

Previews

White Background



This preview shows how the RYB color 204, 160, 154 looks on a white background.

Color Contrast Check

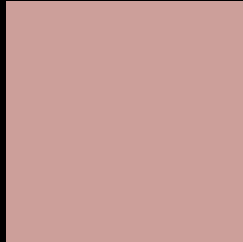
Large Text (above 18pt) WCAG AA × Fail

Any Text WCAG AA × Fail

Large Text (above 18pt) WCAG AAA × Fail

Any Text WCAG AAA × Fail

Black Background



This preview shows how the RYB color 204, 160, 154 looks on a black background.

Color Contrast Check

Large Text (above 18pt) WCAG AA ✓ Pass

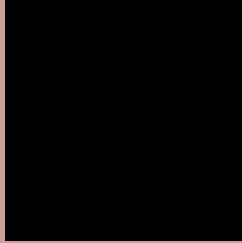
Any Text WCAG AA ✓ Pass

Large Text (above 18pt) WCAG AAA ✓ Pass

Any Text WCAG AAA ✓ Pass

If you want to check with other color combinations, try the [Color Contrast Checker](#).

RYB 204, 160, 154 Background



This preview shows how black text looks on a background with the RYB color 204, 160, 154.



This preview shows how white text looks on a background with the RYB color 204, 160, 154.

Color Blindness Simulation

Color vision deficiency is a very complex topic, and I could not describe the different causes any better than Wikipedia does, so if you want to learn more, you should check out their [article about color blindness](#).

Dichromacy



Original Color
204, 160, 154

Protanopia
171, 176, 159

Deuteranopia
193, 168, 153



Tritanopia
206, 157, 169

Trichromacy



Original Color

204, 160, 154

Protanomaly

186, 168, 157

Deuteranomaly

197, 164, 153

Tritanomaly

205, 158, 164

Monochromacy



Original Color

204, 160, 154

Achromatopsia

172, 172, 172

Achromatomaly

184, 167, 165

CSS Examples

Text

The CSS property to change the color of the text to RYB 204, 160, 154 is called "color". The color property can be set on classes, ids or directly on the HTML element.

This example shows how text in the color rgb(204, 159, 154) looks like.

```
.text, #text, p{  
    color:rgb(204, 159, 154)  
}
```

If you want to add a text shadow in that color use the text-shadow property, you can generate a text shadow directly with our [CSS Text Shadow Generator](#).

Here you see how black text with a 4 pixel rgb(204, 159, 154) colored shadow looks like.

```
.shadow{ text-shadow: 4px 4px 2px rgb(204, 159, 154) }
```

Border

The CSS property to change the border of an element to RYB 204, 160, 154 is called "border". The border property can be set on classes, ids or directly on the HTML element.

This example shows the color as border, it can be applied via the CSS property "border" or "border-color".

```
.border, #border, table{ border:4px solid rgb(204, 159, 154) }
```

If only the border color should be changed use the property `border-color`.

```
.border{ border-color:rgb(204, 159, 154) }
```

If you want to add a box shadow in that color use:

Here you see how a box with a 4 pixel `rgb(204, 159, 154)` colored shadow looks like.

```
.boxshadow{ -moz-box-shadow:4px 4px 4px  
4px rgb(204, 159, 154); -webkit-box-  
shadow:4px 4px 4px 4px rgb(204, 159, 154);  
box-shadow:4px 4px 4px 4px rgb(204, 159,  
154) }
```

Background

The CSS property to change the background color of an element to RGB 204, 159, 154 is called "background". The background property can be set on classes, ids or directly on the HTML element.

```
.background, #background, body{  
background: rgb(204, 159, 154) }
```

If only the background color should be changed can be used:

```
.background{ background-color: rgb(204,  
159, 154) }
```

This example shows the color as background, it is applied via the CSS property "background".

To optimize and compress your CSS code, you can use our [online CSS compressor and optimizer](#) based on csstidy. If you want to create a linear or radial gradient as background or border, check our [CSS Gradient Generator](#).

Hey! You found this booklet interesting? Support Converting Colors with the new Membership Option!

The pro membership hides all ads, plus gives you double the colors in the color bucket, and more awesome pro features!

[Learn more, Memberships starting at \\$2.50/m!](#)

**Follow me
on Twitter!**

@ConvertingColor